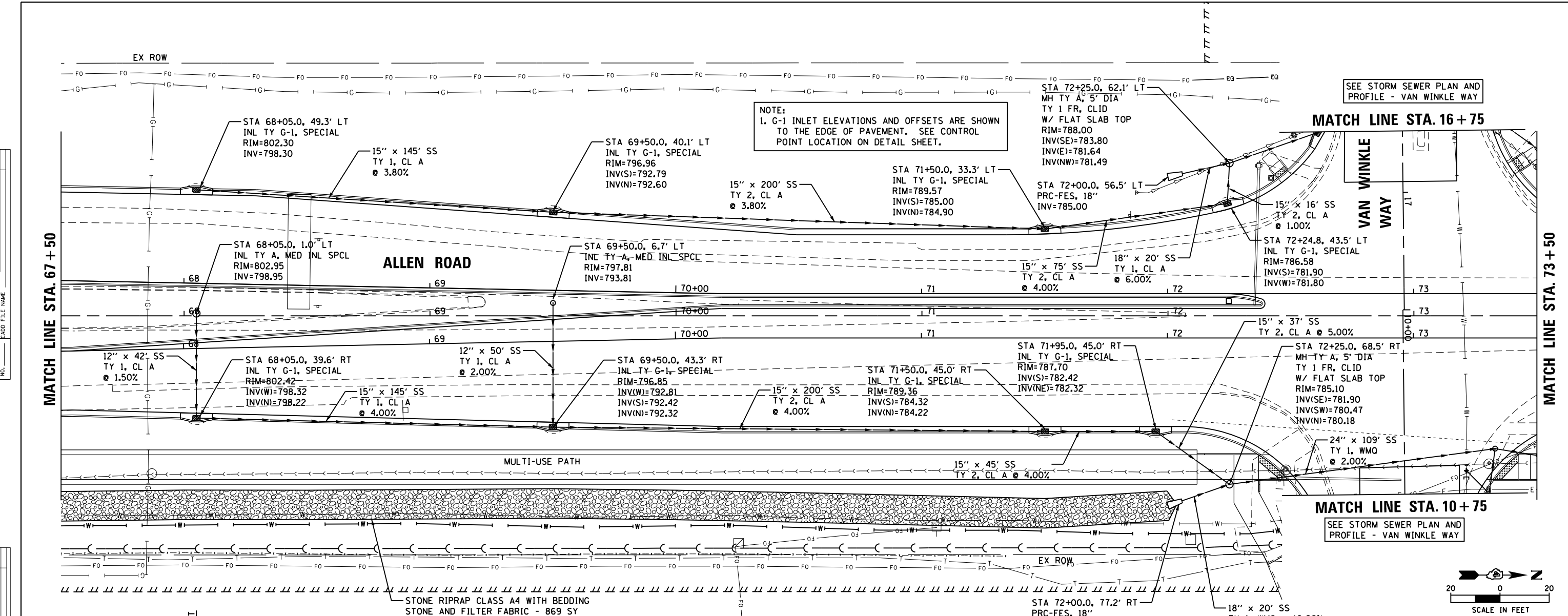


DATE	
BY	
PLAN	SURVEYED
	NOTED
	ALIGNED
	CHECKED
	DESIGNED
	FILE NAME
	NO.

DATE	
BY	
PROFILE	SURVEYED
	GRADES CHECKED
	STRUCTURE
	NOTATIONS
	CHKD
	NO.



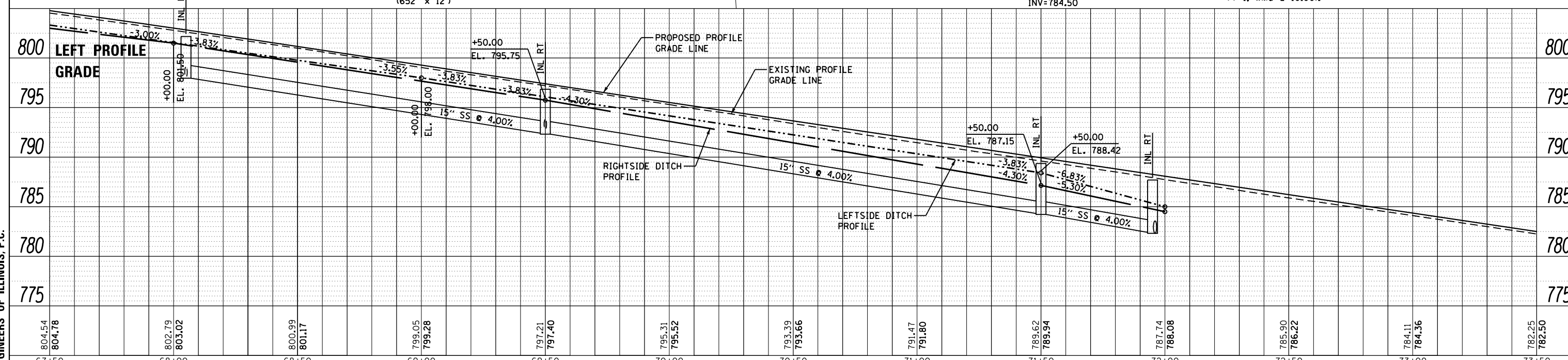
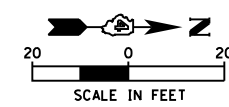
NOTE:  
1. G-1 INLET ELEVATIONS AND OFFSETS ARE SHOWN TO THE EDGE OF PAVEMENT. SEE CONTROL POINT LOCATION ON DETAIL SHEET.

SEE STORM SEWER PLAN AND PROFILE - VAN WINKLE WAY

MATCH LINE STA. 16 + 75

MATCH LINE STA. 10 + 75

SEE STORM SEWER PLAN AND PROFILE - VAN WINKLE WAY



PRAIRIE ENGINEERS OF ILLINOIS, P.C.

FILE NAME =	USER NAME = bbeckstrom	DESIGNED - BAB	REVISED -
I:\Jobs\2013\911301 Allen Road Peoria\Civil\Microstation\468683-shr-drain5.dgn		DRAWN - BAB	REVISED -
PLOT SCALE = 40.0000' / in.		CHECKED - LDK	REVISED -
DATE = 1/27/2014		DATE = 1/24/14	REVISED -

STATE OF ILLINOIS  
DEPARTMENT OF TRANSPORTATION

ALLEN ROAD IMPROVEMENTS  
STORM SEWER PLAN AND PROFILE - ALLEN ROAD

F.A. RTE.	SECTION	COUNTY	TOTAL SHEETS	SHEET NO.
6584	105; (72-7HB)BY	PEORIA	487	203
6585			CONTRACT NO. 68683	

SCALE: 1" = 20' SHEET 203 OF 487 SHEETS STA. 67+50 TO STA. 73+50

ILLINOIS FED. AID PROJECT