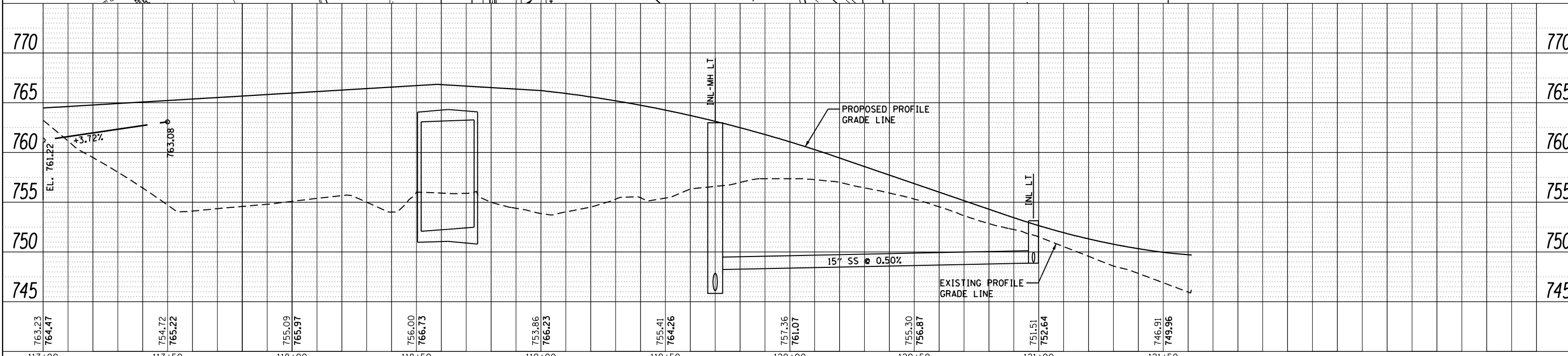
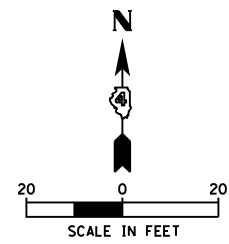
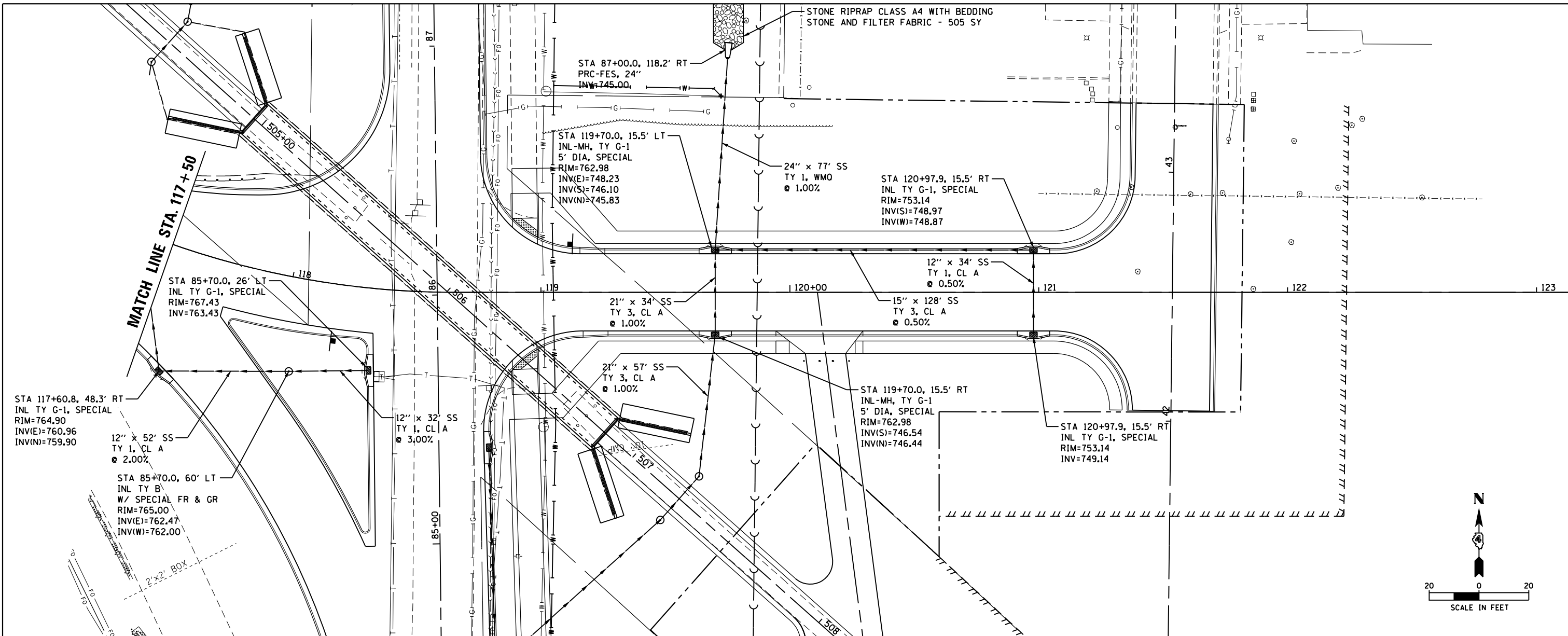


PLAN	SURVEYED	DATE
	PLOTTED	
	GRADES CHECKED	
	STRUCTURE NOTATIONS CHECKED	
	NOTE BOOK NO.	
	BY	

PROFILE	SURVEYED	DATE
	PLOTTED	
	GRADES CHECKED	
	STRUCTURE NOTATIONS CHECKED	
	NOTE BOOK NO.	
	BY	

PRAIRIE ENGINEERS OF ILLINOIS, P.C.



FILE NAME =	USER NAME = bbeckstrom	DESIGNED -	BAB	REVISED -	
I:\Jobs\2013\911301 Allen Road Peoria\Civi	Micrstation\0468683-shr-alta-drain2.dgn	DRAWN -	BAB	REVISED -	
PLOT SCALE = 40.0000' / in.		CHECKED -	LDK	REVISED -	
Default	PLOT DATE = 1/23/2014	DATE -	1/24/14	REVISED -	

STATE OF ILLINOIS
DEPARTMENT OF TRANSPORTATION

ALLEN ROAD IMPROVEMENTS
STORM SEWER PLAN AND PROFILE - ALTA LANE

SCALE: 1" = 20' SHEET 211 OF 487 SHEETS STA. 117+50 TO STA. 121+50

F.A. RTE.	SECTION	COUNTY	TOTAL SHEETS	SHEET NO.
6584	105: (72-7)HBY	PEORIA	487	211
6585	CONTRACT NO. 68683			

ILLINOIS FED. AID PROJECT