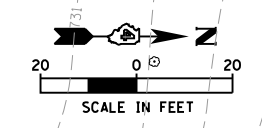
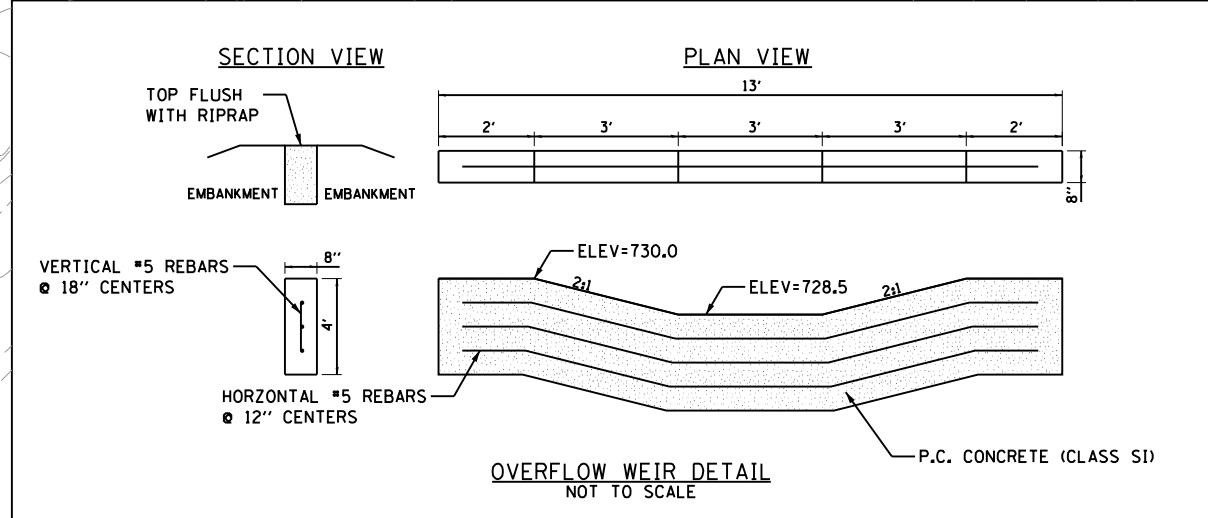
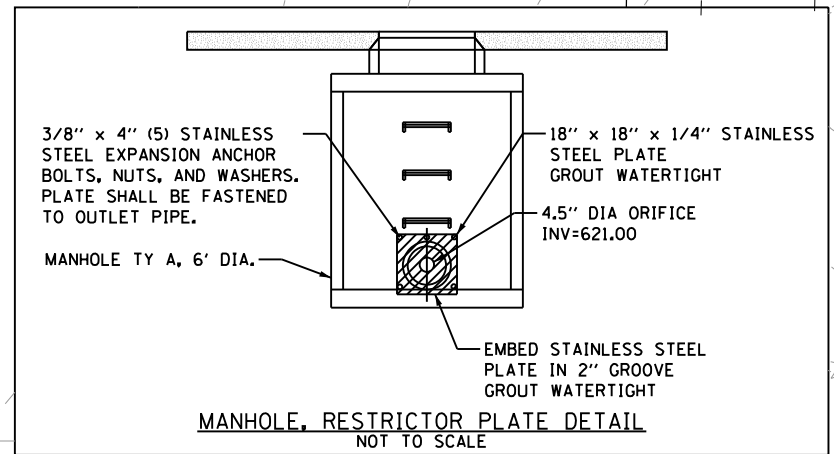


STATION	OFFSET
1. 90+41.1	106.3' RT
2. 90+36.9	111.6' RT
3. 90+38.0	124.6' RT
4. 90+42.9	129.2' RT
5. 90+42.8	138.2' RT
6. 90+91.0	102.2' RT
7. 90+86.7	107.6' RT
8. 90+87.9	122.0' RT
9. 90+92.9	126.6' RT
10. 91+36.5	103.5' RT
11. 91+37.8	118.7' RT
12. 91+40.8	98.1' RT
13. 91+42.9	123.2' RT
14. 91+45.4	138.2' RT
15. 91+70.4	112.8' RT
16. 91+71.2	127.8' RT
17. 91+86.4	99.4' RT
18. 91+86.8	104.0' RT
19. 91+90.6	94.0' RT
20. 91+92.0	108.6' RT
21. 92+01.7	126.1' RT
22. 92+35.8	95.5' RT
23. 92+36.3	99.7' RT
24. 92+40.1	90.0' RT
25. 92+41.3	104.2' RT
26. 92+57.6	124.9' RT
27. 92+85.2	90.7' RT
28. 92+85.7	94.4' RT
29. 92+90.4	97.7' RT
30. 92+89.6	122.4' RT
31. 92+88.5	86.1' RT
32. 93+34.1	113.1' RT



2YR HWL = 725.60
 25YR HWL = 728.70
 100YR HWL = 729.00



PRAIRIE ENGINEERS OF ILLINOIS, P.C.

FILE NAME =	USER NAME = bbeckstrom	DESIGNED - BAB	REVISED -
I:\Jobs\2013\9111301 Allen Road Peoria\Civil\1\Microstation\0468683-sht-detention basin.dgn		DRAWN - BAB	REVISED -
PLOT SCALE = 40.0000' / in.		CHECKED - LDK	REVISED -
Default	PLOT DATE = 1/23/2014	DATE - 1/24/14	REVISED -

STATE OF ILLINOIS
 DEPARTMENT OF TRANSPORTATION

ALLEN ROAD IMPROVEMENTS
 DETENTION BASIN DETAIL

SCALE: 1" = 20' SHEET 212 OF 487 SHEETS STA. 90+00 TO STA. 95+00

F.A.U. RTE. 6584	SECTION 105; (72-7HB)BY	COUNTY PEORIA	TOTAL SHEETS 487	SHEET NO. 212
6585			CONTRACT NO. 68683	
ILLINOIS FED. AID PROJECT				