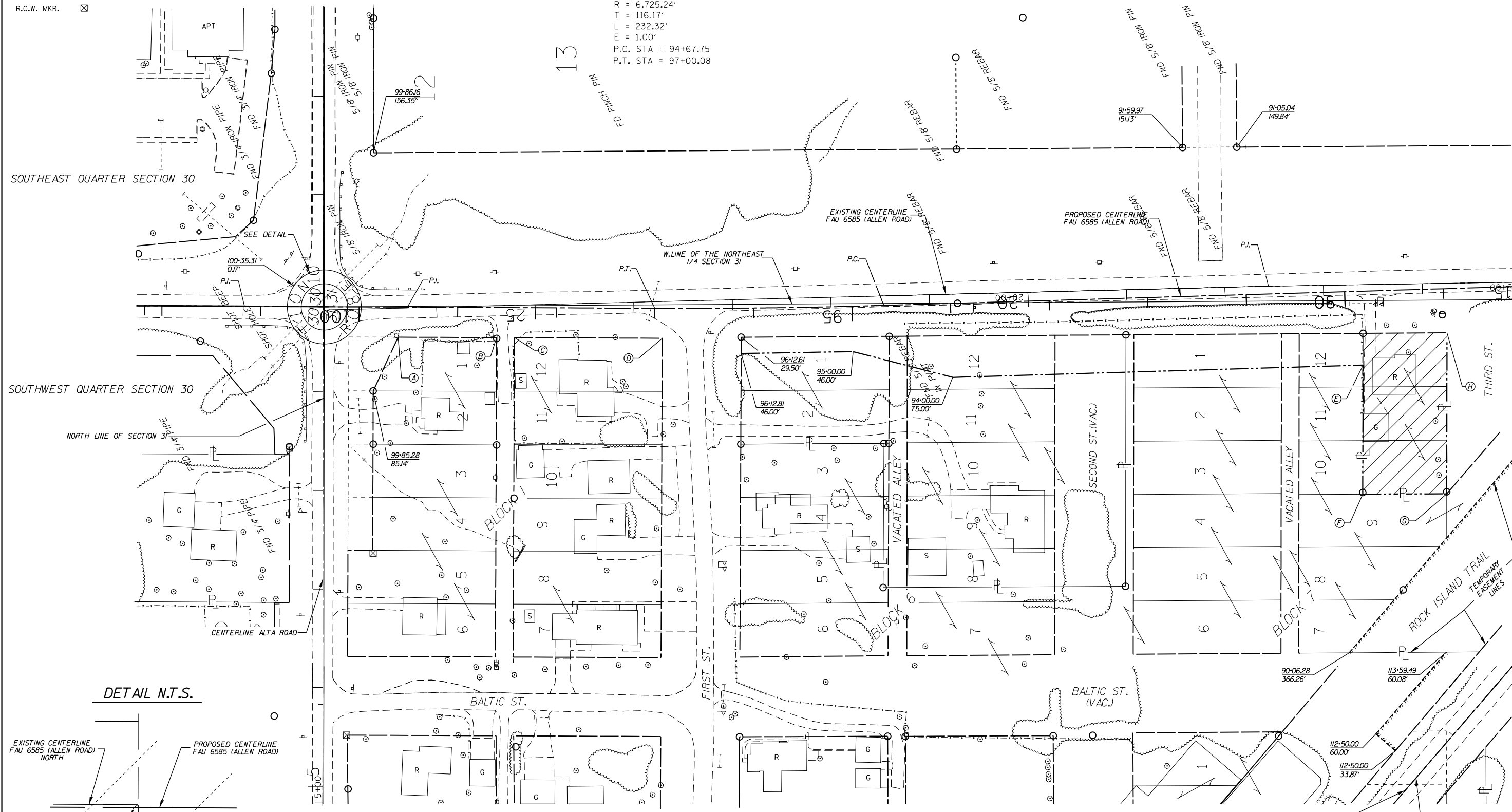


- LEGEND:
- EXISTING R.O.W.
  - PROPOSED R.O.W.
  - TEMP. EASEMENT
  - R.O.W. MKR. ☒

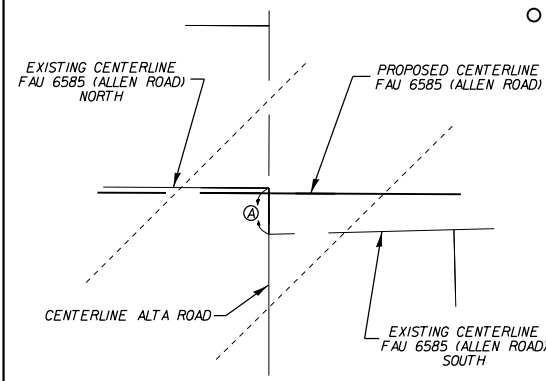
NORTHEAST QUARTER SECTION 31

T 10 N, R 8 E, 4TH P.M.

PROP. ALLEN RD.  
 PI STA. = 95+83.93  
 $\Delta = 1^\circ 58' 45''$  (RT)  
 $D = 0^\circ 51' 07''$   
 $R = 6,725.24'$   
 $T = 116.17'$   
 $L = 232.32'$   
 $E = 1.00'$   
 P.C. STA = 94+67.75  
 P.T. STA = 97+00.08



DETAIL N.T.S.



- Ⓐ 89-83.52 / 75.00'    Ⓐ 99-60.32 / 30.48'
- Ⓑ 89-87.76 / 205.89'    Ⓑ 98-60.32 / 30.41'
- Ⓒ 89-02.64 / 208.02'    Ⓒ 98-42.32 / 30.40'
- Ⓓ 88-97.48 / 44.73'    Ⓓ 96-92.35 / 30.30'

NORTHWEST QUARTER SECTION 31

FAU 6585 (ALLEN ROAD) STA 100-36.38-  
 W. ALTA ROAD STA 9+83.01  
 FAU 6585 (ALLEN ROAD) STA 100-36.40-  
 E. ALTA ROAD STA 9+86.77

Ⓐ EXISTING CENTERLINE FAU 6585 (ALLEN ROAD) SHIFTS S 89°56'26" E 3.76' AT INTERSECTION

FILE NAME = D468683.dgn  
 jobrow.gpk  
 INP02ROW.plt

USER NAME = ROBERT STICKELMAIER  
 PLOT SCALE = 1" = 100'  
 PLOT DATE = 5/28/2013

DESIGNED - RTS  
 DRAWN - RTS  
 CHECKED - PCF  
 DATE - 5/28/2013

REVISED -  
 REVISED -  
 REVISED -  
 REVISED -

STATE OF ILLINOIS  
 DEPARTMENT OF TRANSPORTATION

RIGHT OF WAY PLAN SHEET

SCALE: 1" = 100'    SHEET 1 OF 5 SHEETS    STA.    TO STA.

F.A.U. RTE. 6584/ 6585	SECTION 105; (72-7HB)BY	COUNTY PEORIA	TOTAL SHEETS 487	SHEET NO. 214
R-94-014-II			CONTRACT NO. 68683	
ILLINOIS FED. AID PROJECT				