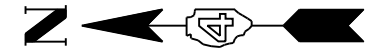
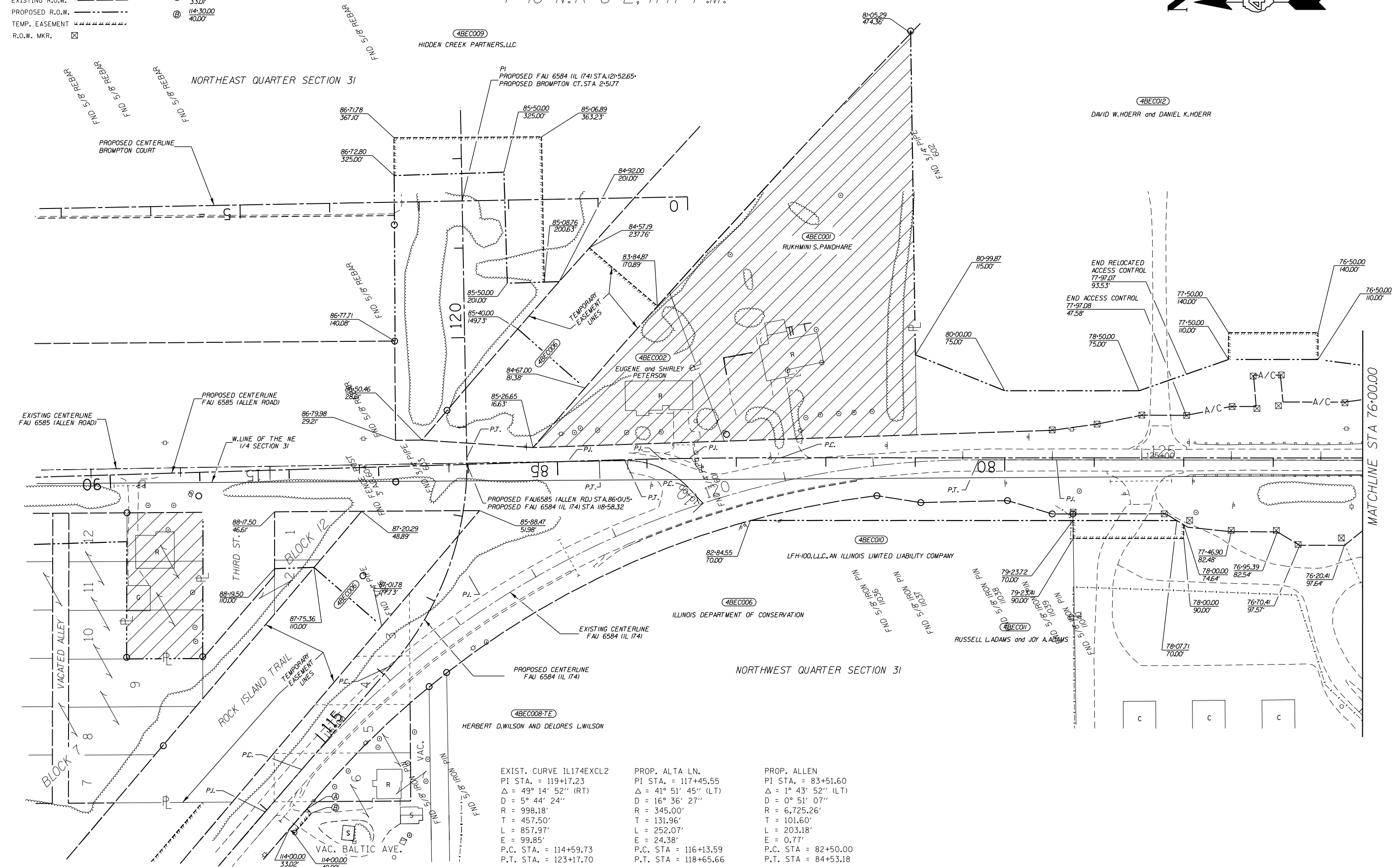


T 10 N.R 8 E, 4TH P.M.



LEGEND:
 EXISTING R.O.W. ———
 PROPOSED R.O.W. - - - -
 TEMP. EASEMENT ~~~~~
 R.O.W. MKR. ☒

Ⓐ 114-30.00
33.01'
 Ⓑ 114-30.00
40.00'



EXIST. CURVE IL174EXCL2 PI STA. = 119+17.23 $\Delta = 49^\circ 14' 52''$ (RT) $D = 5^\circ 44' 24''$ $R = 998.18'$ $T = 457.50'$ $L = 857.97'$ $E = 99.85'$ P.C. STA. = 114+59.73 P.T. STA. = 123+17.70	PROP. ALTA LN. PI STA. = 117+45.55 $\Delta = 41^\circ 51' 45''$ (LT) $D = 16^\circ 36' 27''$ $R = 345.00'$ $T = 131.96'$ $L = 252.07'$ $E = 24.38'$ P.C. STA. = 116+13.59 P.T. STA. = 118+65.66	PROP. ALLEN PI STA. = 83+51.60 $\Delta = 1^\circ 43' 52''$ (LT) $D = 0^\circ 51' 07''$ $R = 6,725.26'$ $T = 101.60'$ $L = 203.18'$ $E = 0.77'$ P.C. STA. = 82+50.00 P.T. STA. = 84+53.18
--	--	---

FILE NAME = D468683.dgn
 USER NAME = ROBERT STICKELMAIER
 PLOT SCALE = 1" = 100'
 PLOT DATE = 5/28/2013

DESIGNED - RTS
 DRAWN - RTS
 CHECKED - PCF
 DATE - 5/28/2013

REVISED -
 REVISED -
 REVISED -
 REVISED -

STATE OF ILLINOIS
 DEPARTMENT OF TRANSPORTATION

RIGHT OF WAY PLAN SHEET

SCALE: 1" = 100' SHEET 2 OF 5 SHEETS STA. TO STA.

F.A.U. RTE. 6584/6585	SECTION 105-(72-7)HB/Y	COUNTY PEORIA	TOTAL SHEETS 487	SHEET NO. 215
CONTRACT NO. 68683				
ILLINOIS FED. AID PROJECT				