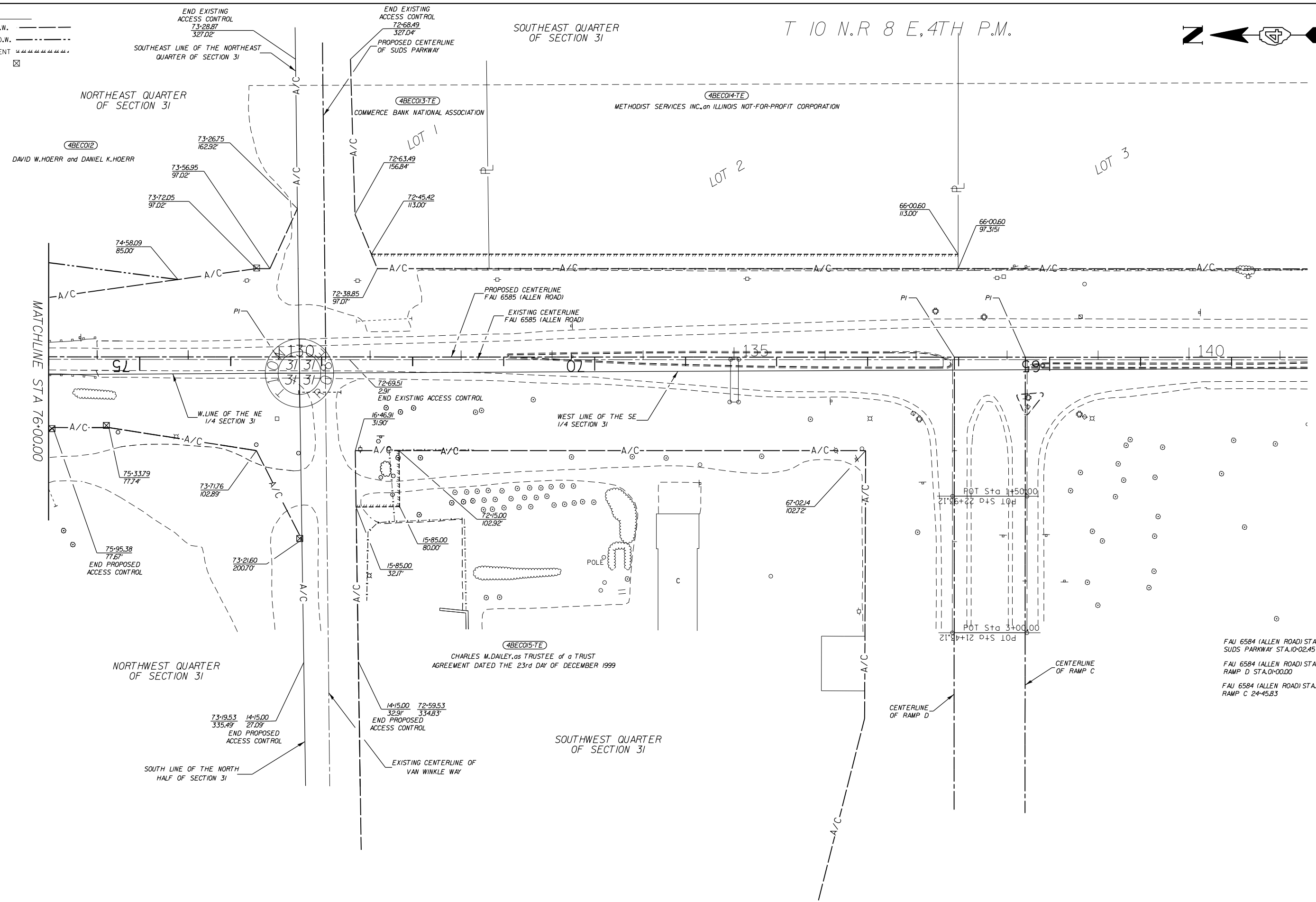
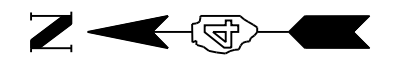


LEGEND:
 EXISTING R.O.W. ————
 PROPOSED R.O.W. - - - -
 TEMP. EASEMENT ~~~~~~
 R.O.W. MKR. ☒

SOUTHEAST QUARTER
 OF SECTION 31

T 10 N. R 8 E, 4TH P.M.



MATCHLINE STA 76+00.00

FAU 6584 (ALLEN ROAD) STA. 72+95.56 -
 SUDS PARKWAY STA. 10+02.45
 FAU 6584 (ALLEN ROAD) STA. 66+04.67 -
 RAMP D STA. 0+00.00
 FAU 6584 (ALLEN ROAD) STA. 65+26.67 -
 RAMP C STA. 24+45.83

FILE NAME = D468683.dgn	USER NAME = ROBERT STICKELMAIER	DESIGNED - RTS	REVISED -
jobrow.gpk		DRAWN - RTS	REVISED -
		CHECKED - PCF	REVISED -
INP02ROW.plt	PLOT DATE = 5/28/2013	DATE - 5/28/2013	REVISED -

**STATE OF ILLINOIS
 DEPARTMENT OF TRANSPORTATION**

RIGHT OF WAY PLAN SHEET

SCALE: 1" = 100' SHEET 3 OF 5 SHEETS STA. TO STA.

F.A.U. RTE. 6584/6585	SECTION 105:(72-7)H/BY	COUNTY PEORIA	TOTAL SHEETS 487	SHEET NO. 216
CONTRACT NO. 68683				ILLINOIS FED. AID PROJECT