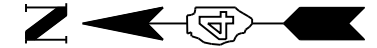


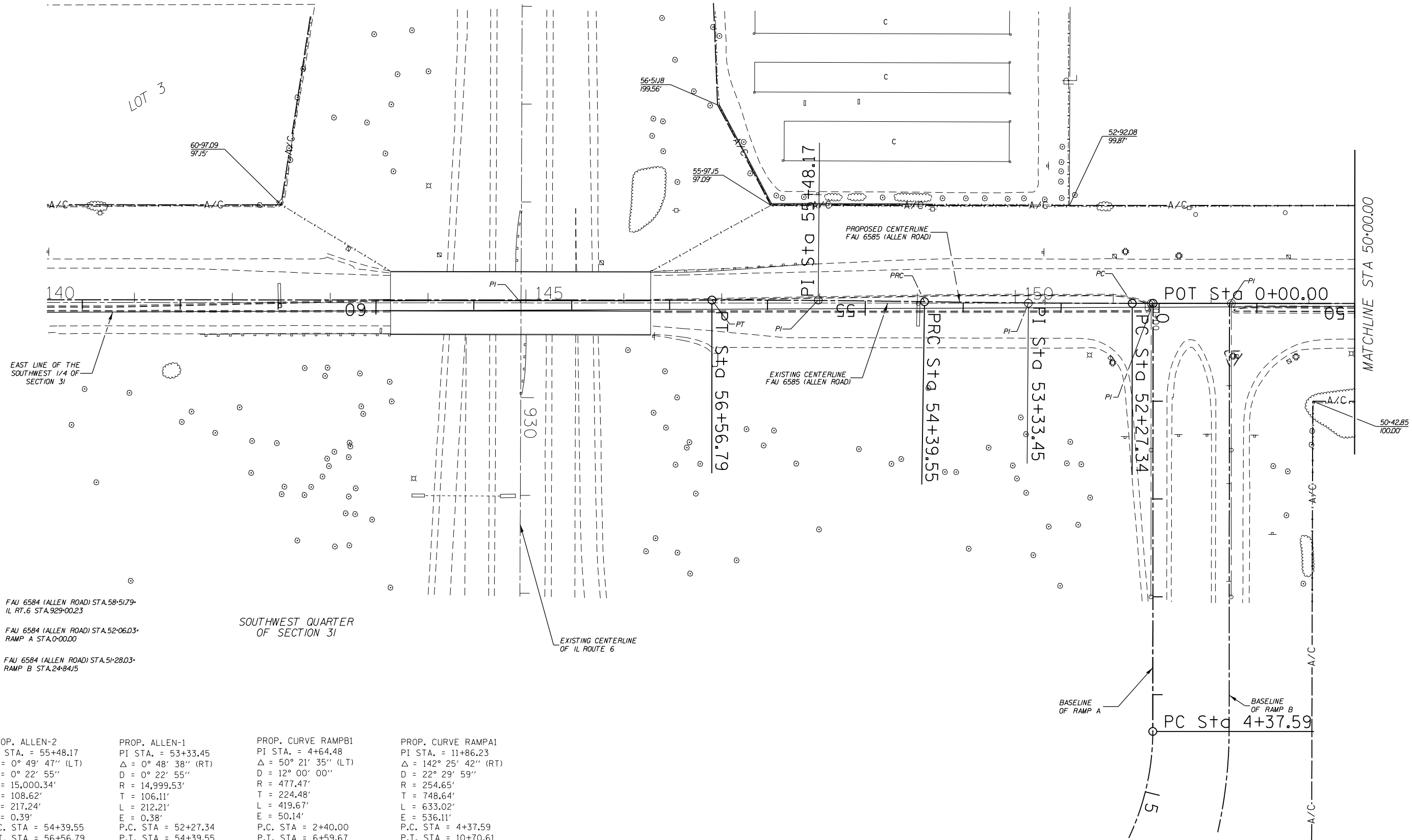
LEGEND:
 EXISTING R.O.W. ———
 PROPOSED R.O.W. - - - - -
 TEMP. EASEMENT *****
 R.O.W. MKR. ☒

T 10 N.R 8 E, 4TH P.M.



SOUTHEAST QUARTER
OF SECTION 31

LOT 3



FAU 6584 (ALLEN ROAD) STA.58+51.79-
IL RT.6 STA.929+00.23
 FAU 6584 (ALLEN ROAD) STA.52+06.03-
RAMP A STA.0+00.00
 FAU 6584 (ALLEN ROAD) STA.51+28.03-
RAMP B STA.24+84.5

SOUTHWEST QUARTER
OF SECTION 31

PROP. ALLEN-2 PI STA. = 55+48.17 Δ = 0° 49' 47" (LT) D = 0° 22' 55" R = 15,000.34' T = 108.62' L = 217.24' E = 0.39' P.C. STA = 54+39.55 P.T. STA = 56+56.79	PROP. ALLEN-1 PI STA. = 53+33.45 Δ = 0° 48' 38" (RT) D = 0° 22' 55" R = 14,999.53' T = 106.11' L = 212.21' E = 0.38' P.C. STA = 52+27.34 P.T. STA = 54+39.55	PROP. CURVE RAMPB1 PI STA. = 4+64.48 Δ = 50° 21' 35" (LT) D = 12° 00' 00" R = 477.47' T = 224.48' L = 419.67' E = 50.14' P.C. STA = 2+40.00 P.T. STA = 6+59.67	PROP. CURVE RAMP A1 PI STA. = 11+86.23 Δ = 142° 25' 42" (RT) D = 22° 29' 59" R = 254.65' T = 748.64' L = 633.02' E = 536.11' P.C. STA = 4+37.59 P.T. STA = 10+70.61
---	---	---	--

FILE NAME = D468683.dgn
 jobrow.gpk
 INP02ROW.plt

USER NAME = ROBERT STICKELMAIER
 DESIGNED - RTS
 DRAWN - RTS
 CHECKED - PCF
 DATE - 5/28/2013

REVISED -
 REVISED -
 REVISED -
 REVISED -

STATE OF ILLINOIS
DEPARTMENT OF TRANSPORTATION

RIGHT OF WAY PLAN SHEET

SCALE: 1" = 100' SHEET 4 OF 5 SHEETS STA. TO STA.

F.A.U. RTE. 6584/ 6585	SECTION 105:(72-7)HB/IBY	COUNTY PEORIA	TOTAL SHEETS 487	SHEET NO. 217
CONTRACT NO. 68683				

ILLINOIS FED. AID PROJECT