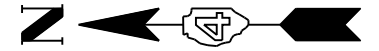


LEGEND:
 EXISTING R.O.W. ———
 PROPOSED R.O.W. - - - - -
 TEMP. EASEMENT ~~~~~
 R.O.W. MKR. ☒

T 10 N.R 8 E, 4TH P.M.

T 9 N.R 8 E, 4TH P.M.

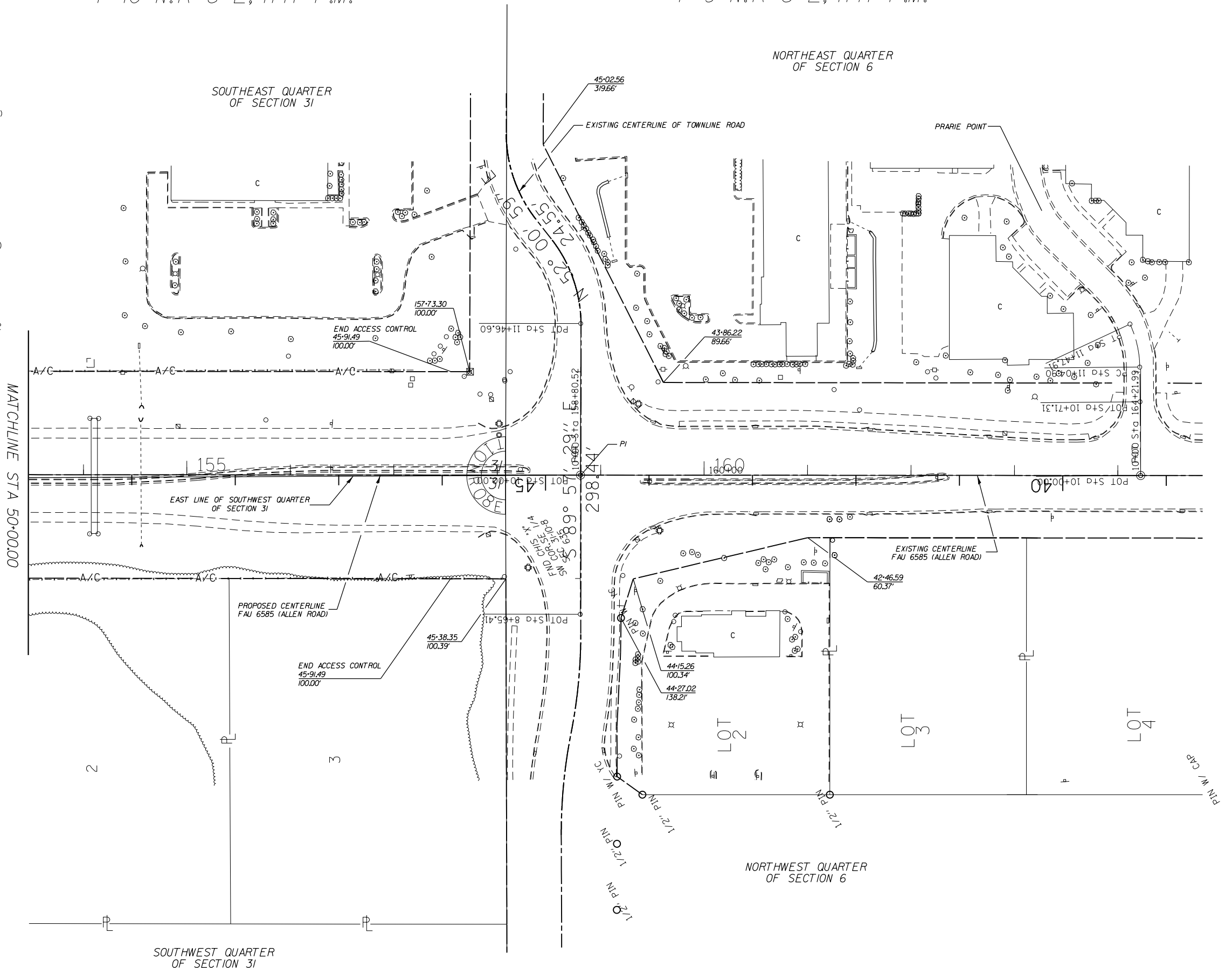


PROP. TOWNLINE01
 PI STA. = 3+53.71
 $\Delta = 11^\circ 21' 25''$ (RT)
 $D = 11^\circ 27' 33''$
 $R = 500.00'$
 $T = 49.72'$
 $L = 99.11'$
 $E = 2.47'$
 P.C. STA = 3+04.00
 P.T. STA = 4+03.10

PROP. TOWNLINE03
 PI STA. = 8+45.02
 $\Delta = 38^\circ 01' 31''$ (LT)
 $D = 42^\circ 26' 29''$
 $R = 135.00'$
 $T = 46.52'$
 $L = 89.60'$
 $E = 7.79'$
 P.C. STA = 7+98.51
 P.T. STA = 8+88.10

PROP. TOWNLINE02
 PI STA. = 4+51.74
 $\Delta = 11^\circ 06' 38''$ (LT)
 $D = 11^\circ 27' 33''$
 $R = 500.00'$
 $T = 48.63'$
 $L = 96.96'$
 $E = 2.36'$
 P.C. STA = 4+03.10
 P.T. STA = 5+00.06

PROP. TOWNLINE04
 PI STA. = 9+59.38
 $\Delta = 38^\circ 11' 03''$ (RT)
 $D = 42^\circ 26' 30''$
 $R = 135.00'$
 $T = 46.73'$
 $L = 89.97'$
 $E = 7.86'$
 P.C. STA = 9+12.65
 P.T. STA = 10+02.62



FAU 6584 (ALLEN ROAD) STA. 44+65.87-
 TOWNLINE ROAD STA. 6+53.45

SOUTHWEST QUARTER
 OF SECTION 31

NORTHWEST QUARTER
 OF SECTION 6

FILE NAME = D468683.dgn jobrow.gpk INP02ROW.plt	USER NAME = ROBERT STICKELMAIER	DESIGNED - RTS	REVISED -	STATE OF ILLINOIS DEPARTMENT OF TRANSPORTATION	RIGHT OF WAY PLAN SHEET			F.A.U. RTE. 6584/ 6585	SECTION 105: (72-7HB)BY	COUNTY PEORIA	TOTAL SHEETS 487	SHEET NO. 218
	PLOT SCALE = 1" = 100'	CHECKED - PCF	REVISED -					SCALE: 1" = 100'	SHEET 5	OF 5 SHEETS	STA.	TO STA.
	PLOT DATE = 5/28/2013	DATE = 5/28/2013	REVISED -					ILLINOIS FED. AID PROJECT				