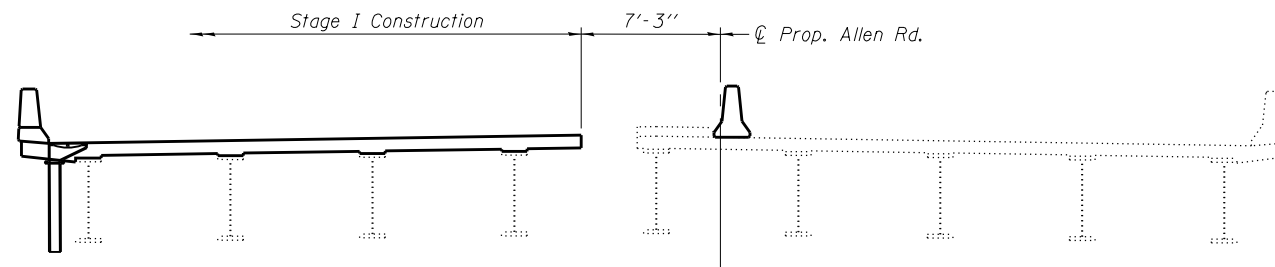
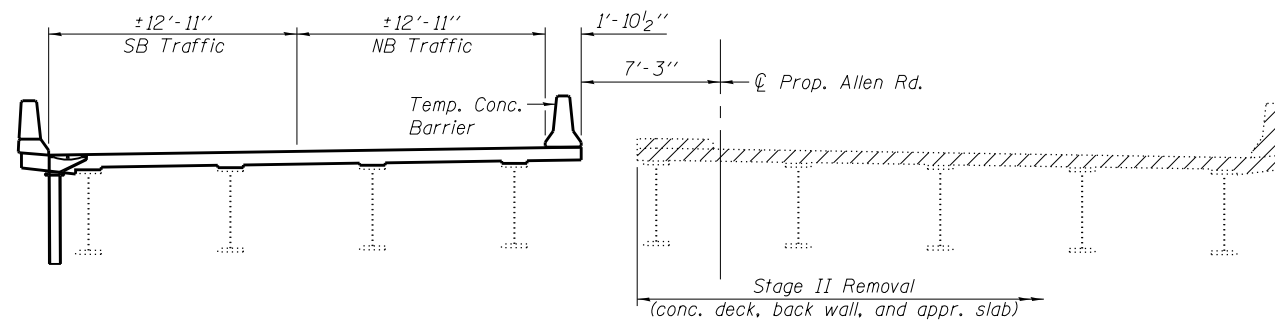


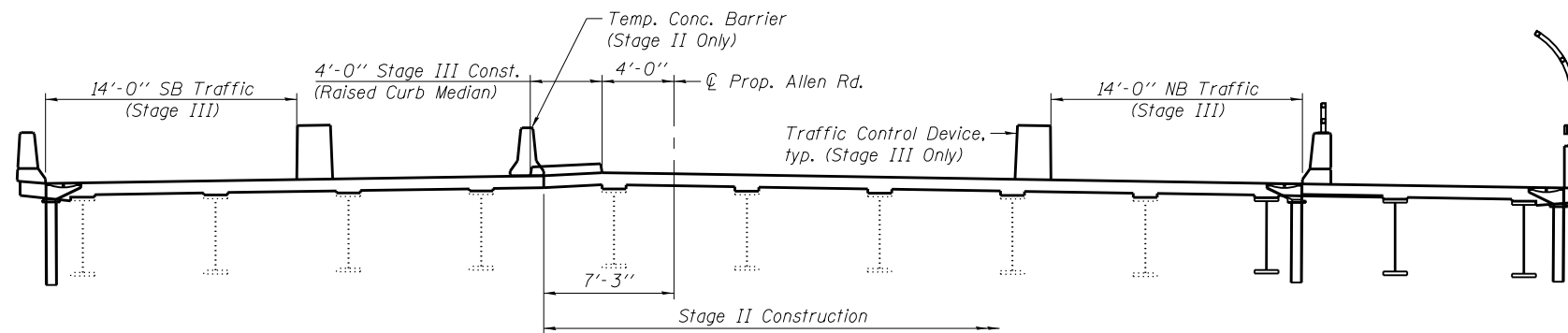
**STAGE I REMOVAL**



**STAGE I CONSTRUCTION**



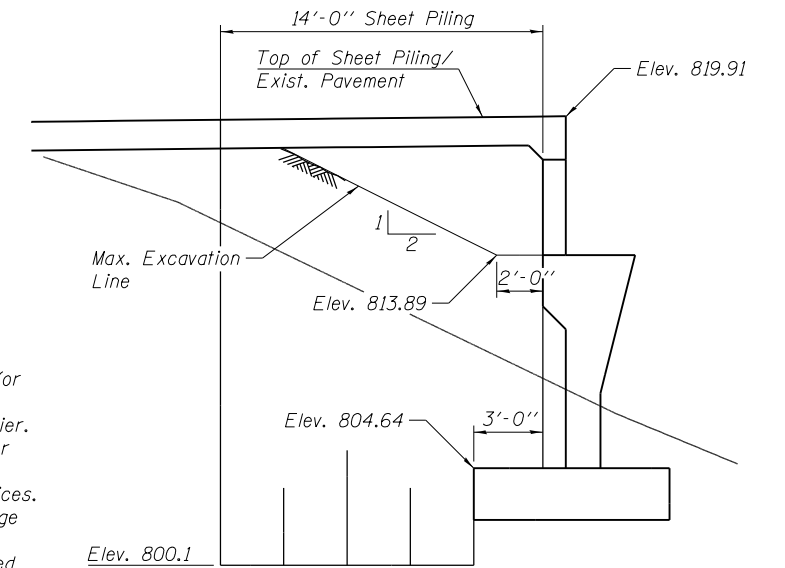
**STAGE II REMOVAL**



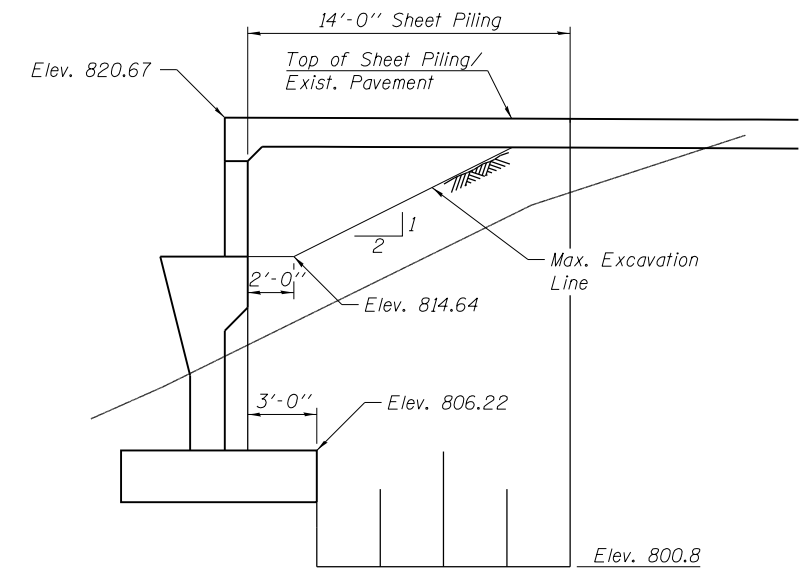
**STAGE II & III CONSTRUCTION**

**Notes:**

All staging cross sections are looking North.  
 Hatched areas indicate Removal of Existing Concrete Deck (or Approach Slab Removal on vaulted approach spans).  
 See Sheet 4 of 36 for details of Temporary Concrete Barrier.  
 See Rdwy. Plans for quantity of Temporary Concrete Barrier and Approach Slab Removal.  
 See Rdwy. Staging Plans for details of Traffic Control Devices.  
 Remove existing bridge-mounted sign structure prior to Stage II Removal.  
 If the Contractor chooses to alter the temporary cantilevered sheet piling design requirements shown on the plans, a design submittal including plan details and calculations will be required for review and acceptance by the Engineer.  
 The Contractor shall connect the first sheet to the existing abutment wall to ensure stability of sheets driven to the top of the existing footing. This connection shall be reviewed and accepted by the Engineer and included in the cost for Temporary Sheet Piling.  
 The<sup>3</sup>minimum section modulus of the sheet piling shall be 6.9 in /ft.



**TEMPORARY SHEET PILING SOUTH ABUTMENT**  
(Looking West)



**TEMPORARY SHEET PILING NORTH ABUTMENT**  
(Looking West)

**BILL OF MATERIAL**

Item	Unit	Total
Temporary Sheet Piling	Sq. Ft.	526