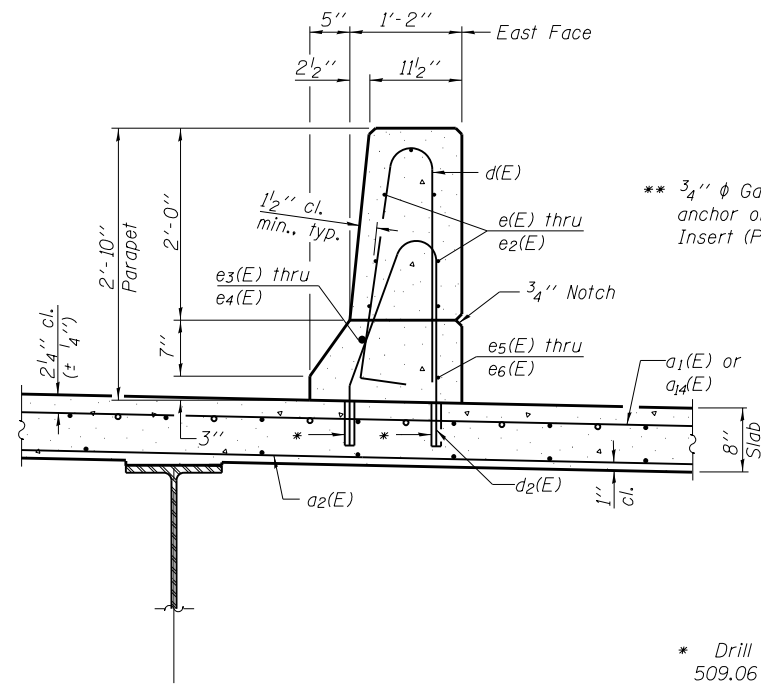
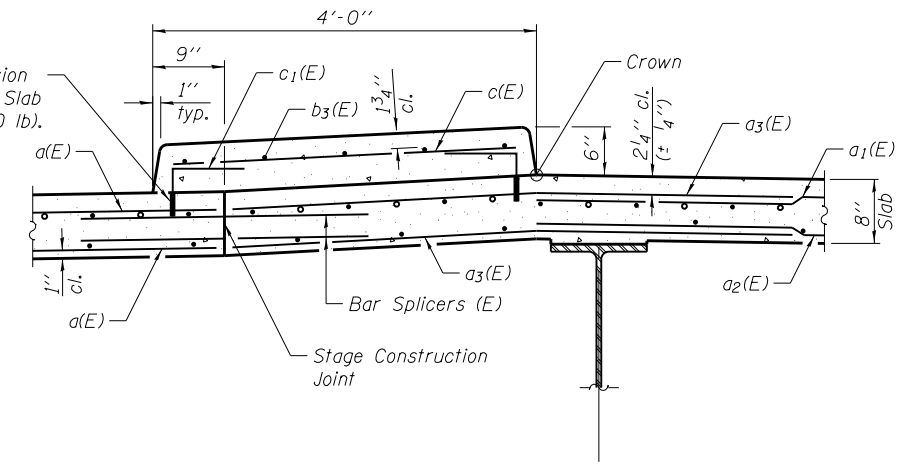


SECTION THRU WEST PARAPET



SECTION THRU INTERIOR PARAPET

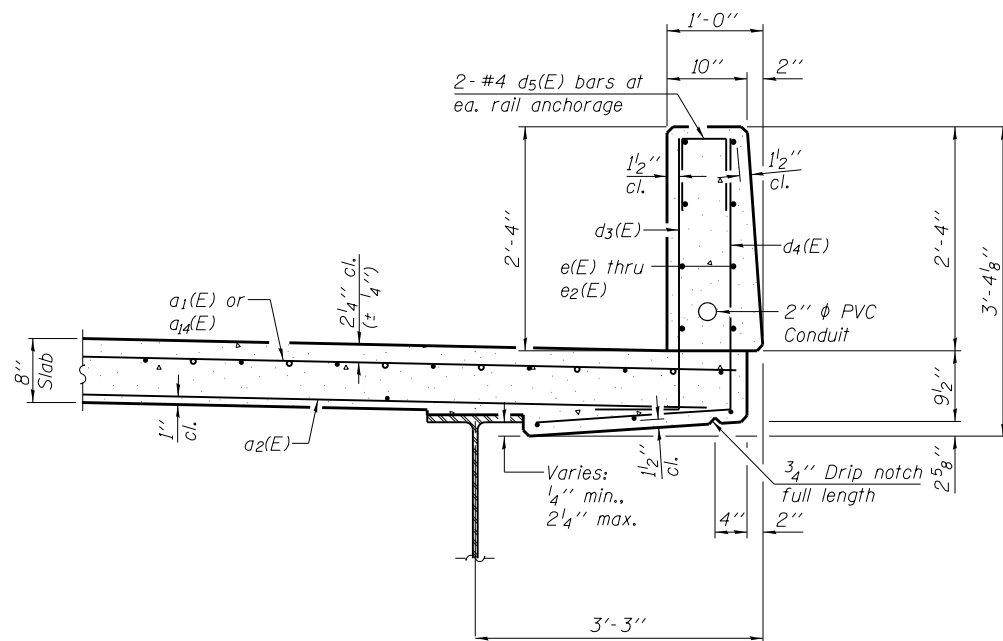
\*\* 3/4"  $\phi$  Galvanized expansion anchor or Ferrule Loop Slab Insert (Proof Load 6600 lb).



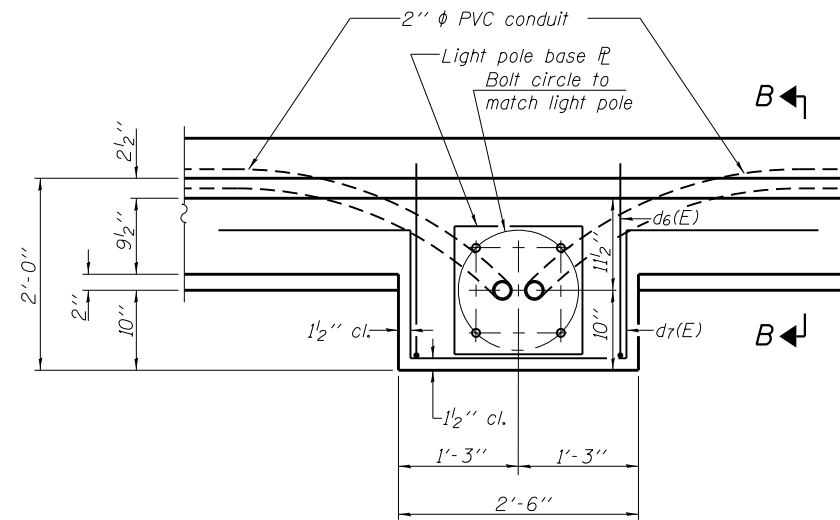
SECTION THRU RAISED CURB MEDIAN

\* Drill and set #5 d<sub>2</sub>(E) bar according to Article 509.06 of the Standard Specifications. Drilled holes shall be roughened or scored per manufacturer's recommendations. Maximum depth of hole shall not exceed 6".

\*\* Cost included with Reinforcement Bars, Epoxy Coated.

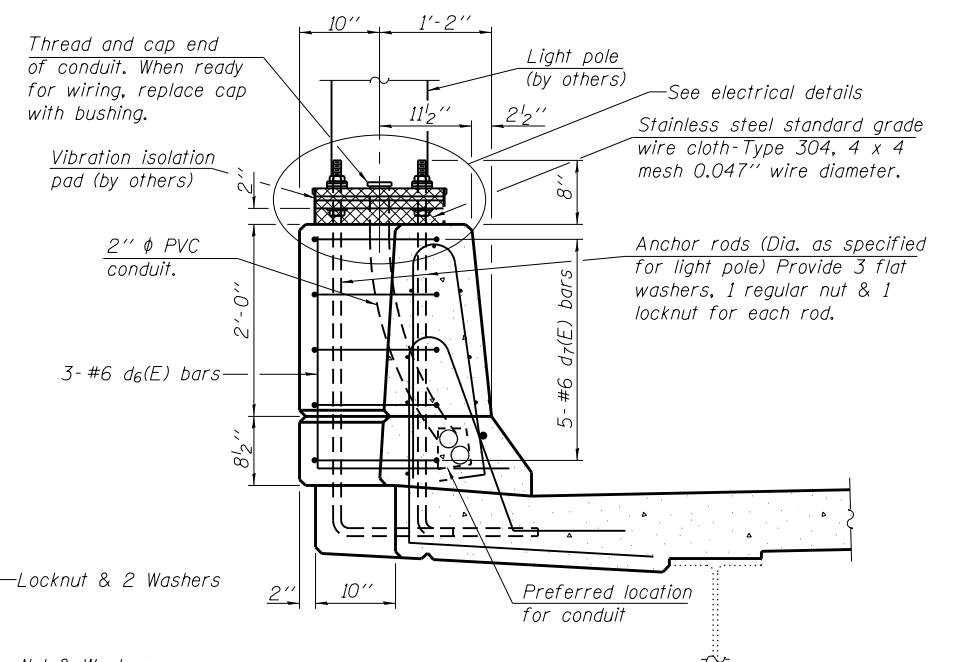


SECTION THRU EAST PARAPET

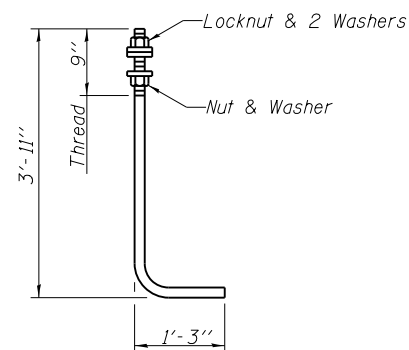


PLAN

Note:  
Cost of anchor rods and conduit is included with Concrete Superstructure.



SECTION B-B



ANCHOR ROD

Diameter as specified for light poles.  
(ASTM F 1554 Grade 105) Full length hot dipped galvanized.

(Sheet 2 of 3)

Notes:  
Maintain a minimum clearance of 1/2" from conduit to all parapet reinforcement.

FILE NAME = 0720146-68683-013-Superstructure Details	USER NAME = baswanson	DESIGNED - BAS	REVISED	<b>STATE OF ILLINOIS DEPARTMENT OF TRANSPORTATION</b>	<b>SUPERSTRUCTURE DETAILS STRUCTURE NO. 072-0146</b>	F.A.P. R.T.E. = 318	SECTION = (72-7HB)BY	COUNTY = PEORIA	TOTAL SHEETS = 487	SHEET NO. = 300	
MAURER-STUTZ ENGINEERS SURVEYORS	PLOT SCALE =	CHECKED - JAE	REVISED			CONTRACT NO. 68683					
	PLOT DATE = 1/24/2014	DRAWN - BAS	REVISED			ILLINOIS FED. AID PROJECT					
		CHECKED - RAL	REVISED			SHEET NO. 13 OF 36 SHEETS					