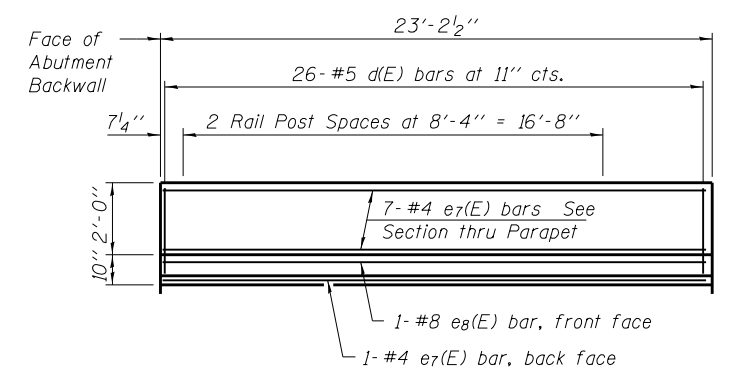
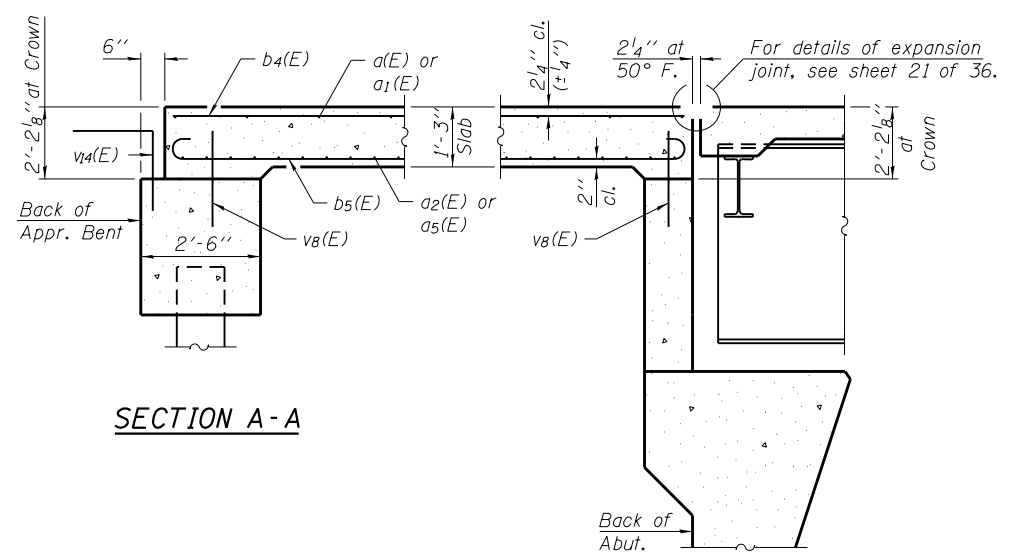


INSIDE ELEVATION OF WEST PARAPET

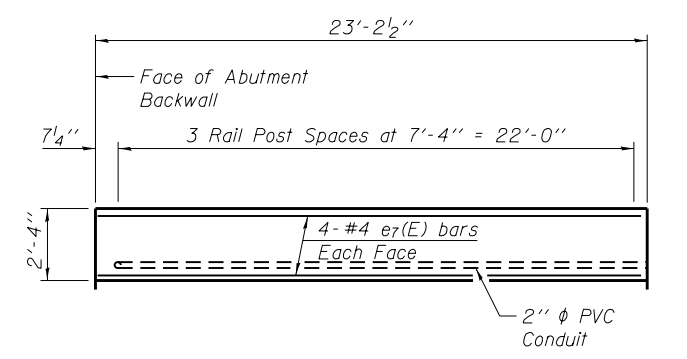


INSIDE ELEVATION OF INTERIOR PARAPET



SECTION A-A

SECTION B-B



INSIDE ELEVATION OF EAST PARAPET

TWO APPROACH SLABS  
BILL OF MATERIAL

Bar	No.	Size	Length	Shape
a(E)	32	#5	28'-10"	—
a1(E)	64	#5	28'-6"	—
a2(E)	168	#5	19'-11"	—
a3(E)	88	#5	6'-2"	—
a4(E)	48	#6	6'-6"	—
a5(E)	56	#5	26'-3"	—
a14(E)	48	#6	20'-6"	—
b4(E)	140	#5	22'-11"	—
b5(E)	330	#8	24'-6"	—
b6(E)	10	#5	22'-11"	—
c(E)	48	#5	3'-6"	—
c1(E)	96	#5	1'-4"	Γ
d(E)	104	#5	5'-7"	∩
d2(E)	52	#5	4'-8"	∩
d3(E)	48	#6	3'-9"	L
d5(E)	16	#4	2'-0"	□
d8(E)	52	#5	10'-0"	⌋
d9(E)	48	#4	6'-1"	⌋
e7(E)	48	#4	22'-11"	—
e8(E)	4	#8	22'-11"	—
Reinforcement Bars, Epoxy Coated			Pound	38750
Concrete Superstructure			Cu. Yd.	210.6

Notes:  
See Sheet 16 of 36 for cross section and details of parapets and median.  
See Sheet 35 of 36 for details of Bar Splicers.  
Bars indicated thus 16 x 2-#5 etc. indicates 16 lines of bars with 2 lengths per line.

FILE NAME = 0720146-68683-015-Appr Spon.dgn	USER NAME = baswanson	DESIGNED - BAS	REVISED
MAURER-STUTZ ENGINEERS SURVEYORS	PLOT SCALE =	CHECKED - JAE	REVISED
PLOT DATE = 1/24/2014		DRAWN - BAS	REVISED
		CHECKED - RAL	REVISED

STATE OF ILLINOIS  
DEPARTMENT OF TRANSPORTATION

VAULTED ABUTMENT APPROACH SPAN  
STRUCTURE NO. 072-0146

F.A.P. RTE.	SECTION	COUNTY	TOTAL SHEETS	SHEET NO.
318	(72-7HB)BY	PEORIA	487	302
CONTRACT NO. 68683				