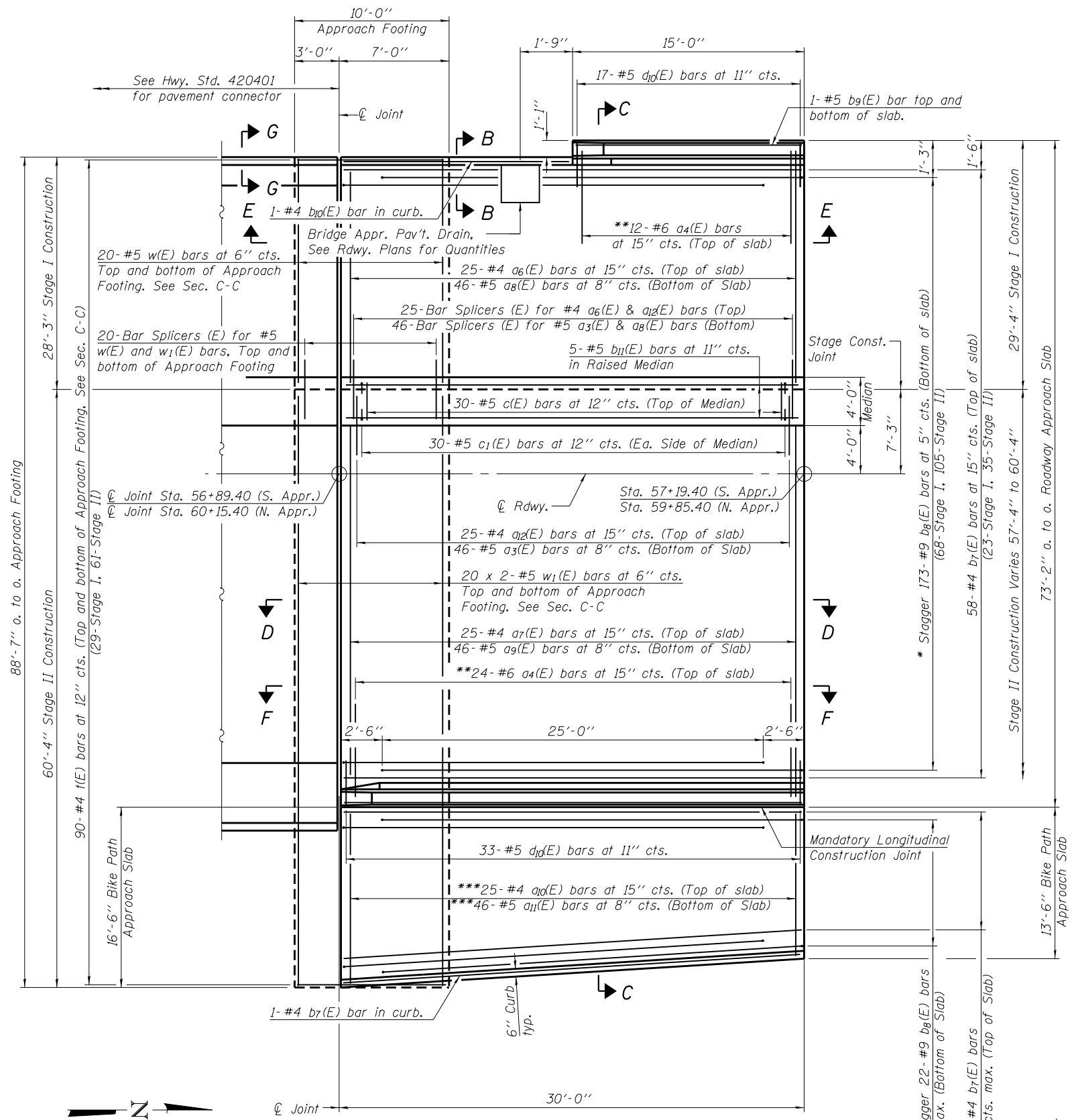
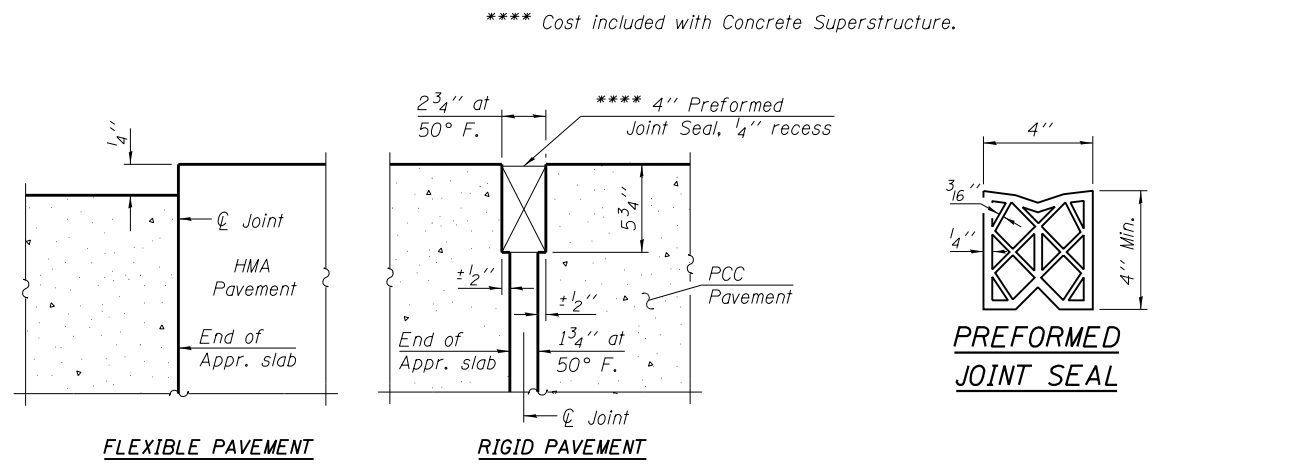


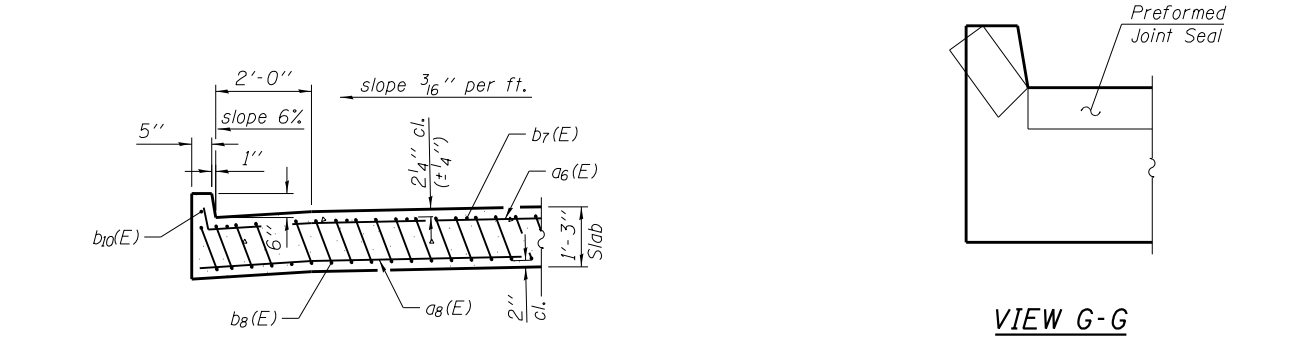
Notes:  
 See Sheet 18 of 36 for Sections C-C & D-D and Views E-E & F-F.  
 Cut bars as needed to fit around the Bridge Approach Pavement Drain. See Std. 609006 for details.  
 See Sheet 35 of 36 for details of Bar Splicers.  
 Bars indicated thus 20 x 2-#5 etc. indicates 20 lines of bars with 2 lengths per line.



**PLAN**  
 (South approach slab shown, North approach opposite)



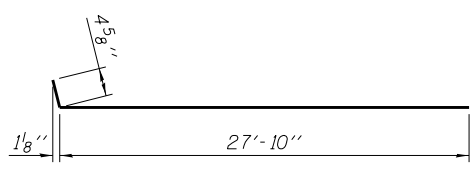
**DETAIL A**



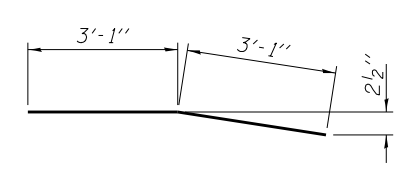
**SECTION B-B**

**VIEW G-G**

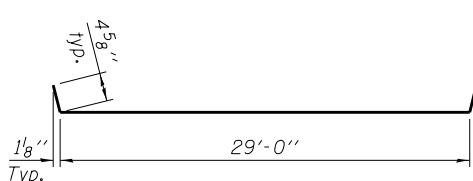
Angle Preformed Joint Seal (PJS) at 45° at curbs. Continue PJS at top of slab across median.



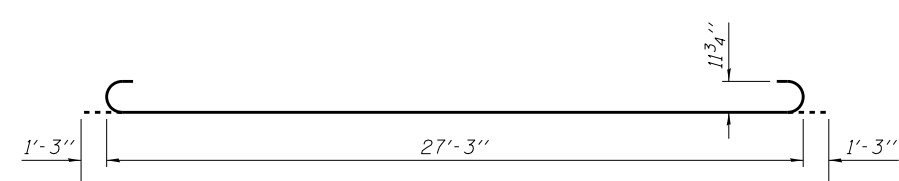
**BAR a6(E)**



**BAR a3(E) and a12(E)**



**BAR a10(E)**



**BAR b8(E)**

\* Tilt #9 b8(E) bars as required to maintain clearance.  
 \*\* Space between a6(E) or a7(E) bars.  
 \*\*\* Cut bars to fit, use remainder in opposite approach.

\* Fan & Stagger 22-#9 b8(E) bars at 9" cts. max. (Bottom of Slab)  
 Fan 14-#4 b7(E) bars at 15" cts. max. (Top of Slab)

(Sheet 1 of 2)