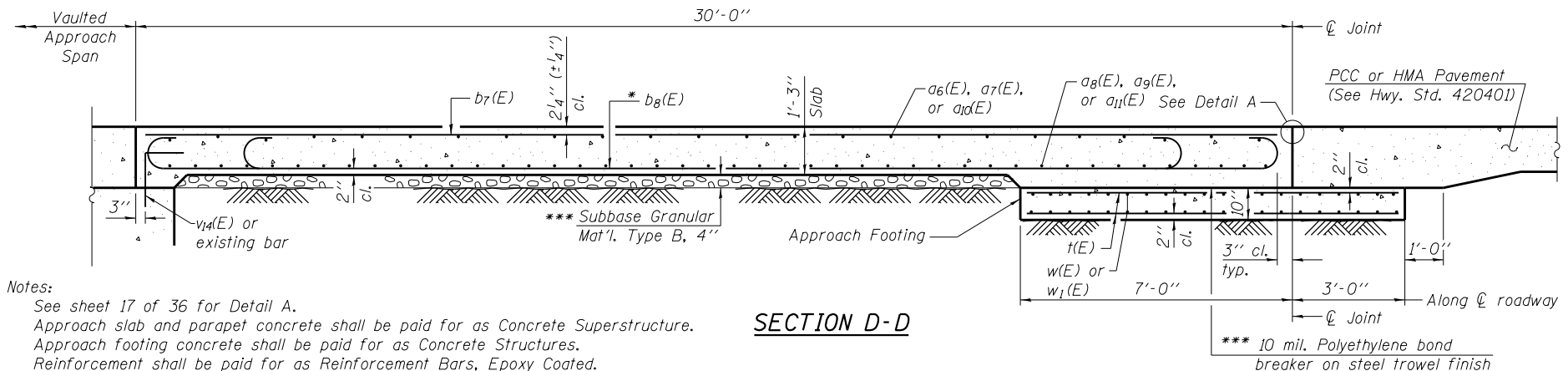


* Tilt #9 b₈(E) bars as required to maintain clearance.
 *** Cost included with Concrete Superstructure.

NEAR APPR. BENT

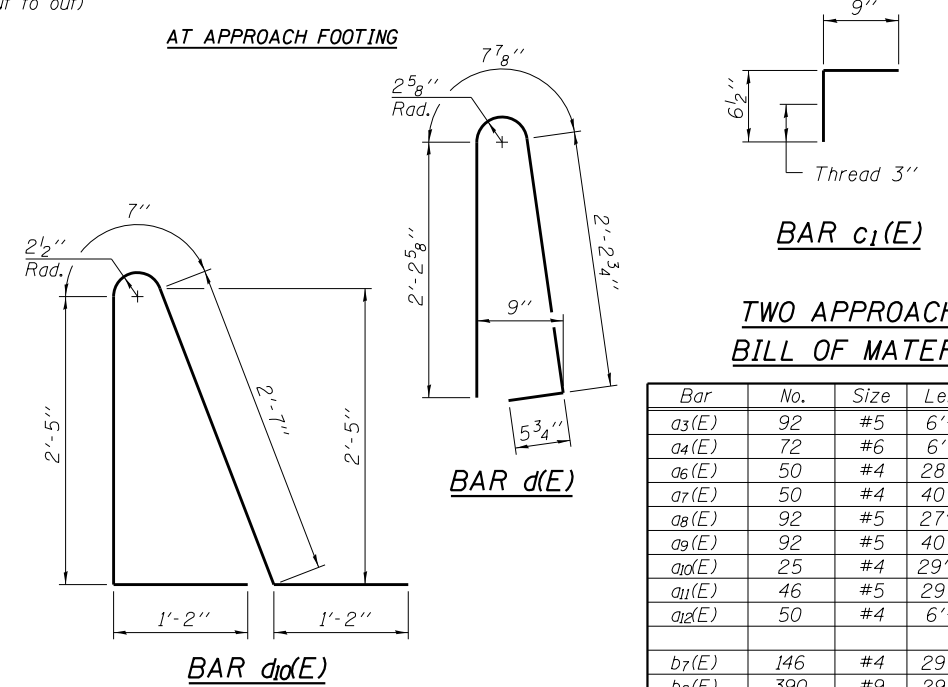
SECTION C-C
(Looking North)

AT APPROACH FOOTING



Notes:
 See sheet 17 of 36 for Detail A.
 Approach slab and parapet concrete shall be paid for as Concrete Superstructure.
 Approach footing concrete shall be paid for as Concrete Structures.
 Reinforcement shall be paid for as Reinforcement Bars, Epoxy Coated.
 For v_{1d}(E) bar details, see sheet 30 or 32 of 36.
 The approach footing maximum applied service bearing pressure (Q_{max}) = 2.0 ksf.
 For bar splicer details, see sheet 35 of 36.
 Cost of excavation for approach footing included with Concrete Structures.
 For additional parapet and median details, see sheet 16 of 36.

SECTION D-D



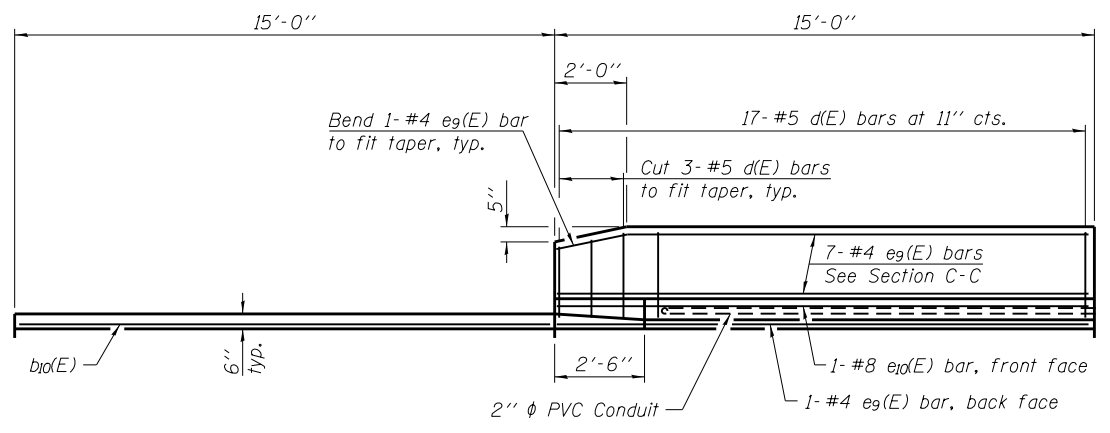
BAR c₁(E)

BAR d(E)

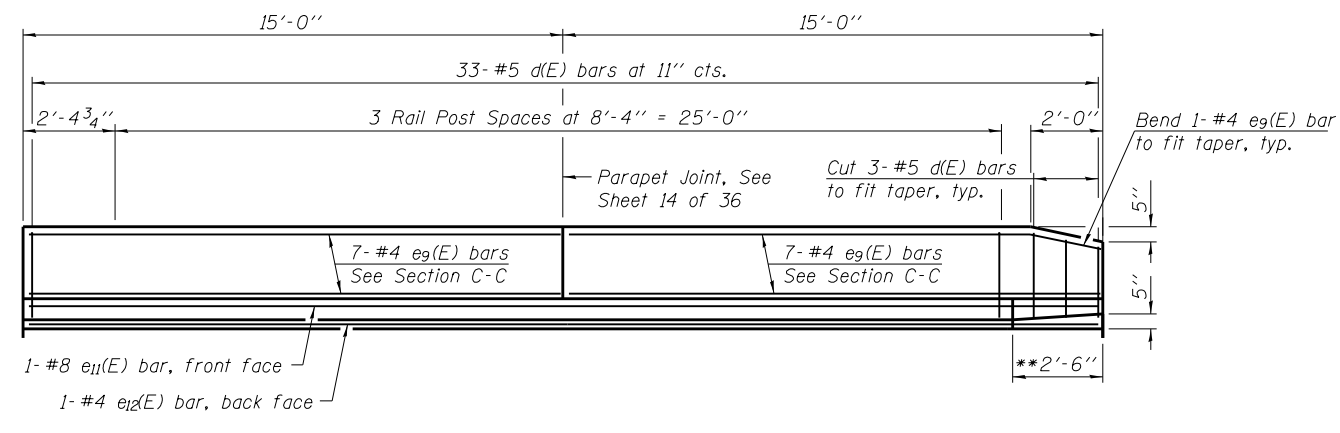
BAR d_{1d}(E)

TWO APPROACHES
BILL OF MATERIAL

Bar	No.	Size	Length	Shape
a ₃ (E)	92	#5	6'-2"	—
a ₄ (E)	72	#6	6'-6"	—
a ₆ (E)	50	#4	28'-3"	—
a ₇ (E)	50	#4	40'-5"	—
a ₈ (E)	92	#5	27'-11"	—
a ₉ (E)	92	#5	40'-5"	—
a ₁₀ (E)	25	#4	29'-10"	—
a ₁₁ (E)	46	#5	29'-4"	—
a ₁₂ (E)	50	#4	6'-2"	—
b ₇ (E)	146	#4	29'-8"	—
b ₈ (E)	390	#9	29'-9"	—
b ₉ (E)	4	#5	14'-8"	—
b ₁₀ (E)	2	#4	14'-8"	—
b ₁₁ (E)	10	#5	29'-8"	—
c(E)	60	#5	3'-6"	—
c ₁ (E)	120	#5	1'-4"	—
d(E)	100	#5	5'-7"	—
d _{1d} (E)	100	#5	7'-11"	—
e ₉ (E)	44	#4	14'-8"	—
e ₁₀ (E)	2	#8	14'-8"	—
e ₁₁ (E)	2	#8	29'-8"	—
e ₁₂ (E)	2	#4	29'-8"	—
t(E)	360	#4	9'-8"	—
w(E)	80	#5	27'-11"	—
w ₁ (E)	160	#5	31'-6"	—
Concrete Superstructure				Cu. Yd. 285.4
Concrete Structures				Cu. Yd. 54.7
Reinforcement Bars, Epoxy Coated				Pound 67400



VIEW E-E



VIEW F-F

** Match B-6.24 curb at end of North Approach.