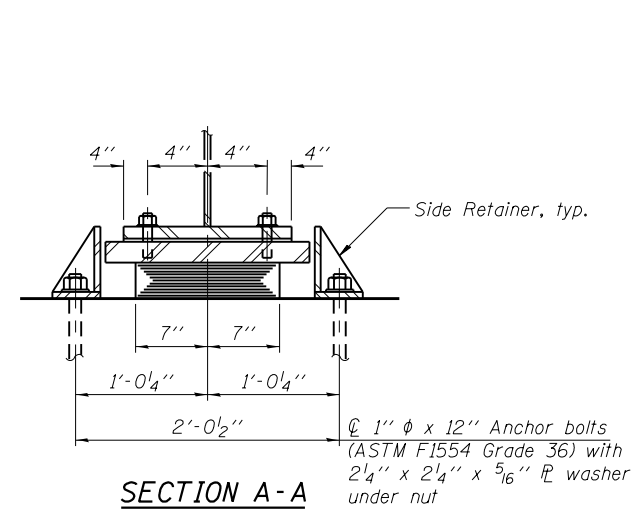


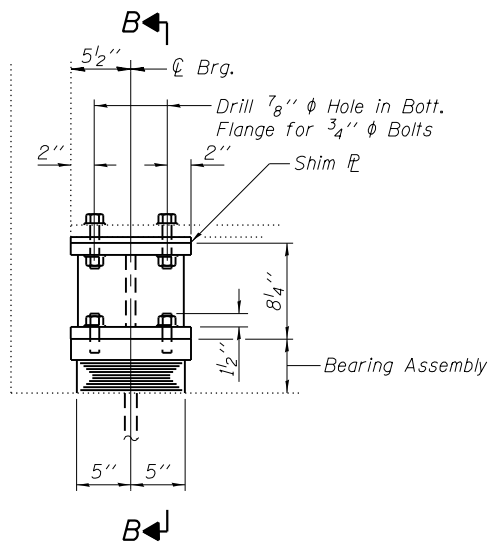
ELEVATION AT ABUT.



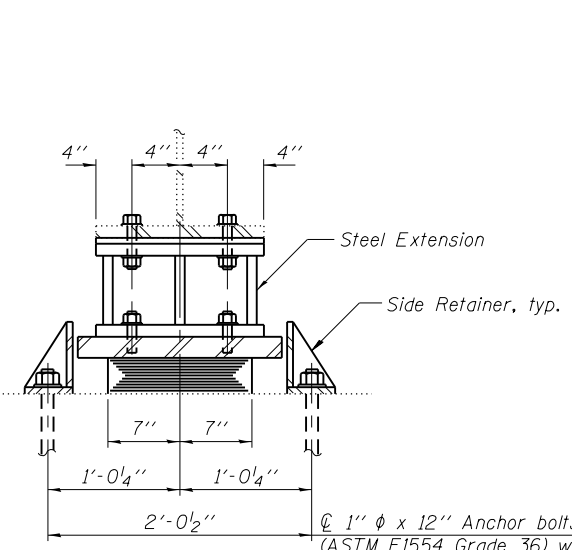
SECTION A-A

TYPE I ELASTOMERIC EXP. BRG.

(Beams 10 thru 12)
(6 Required)



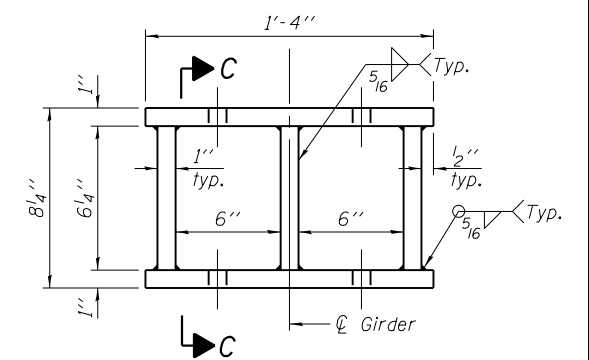
ELEVATION AT ABUT.



SECTION B-B

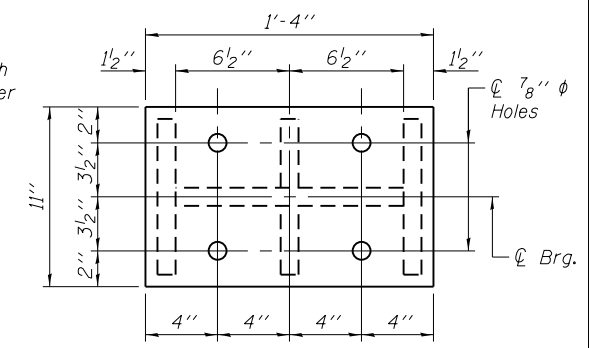
TYPE I ELASTOMERIC EXP. BRG.

(Beams 1 thru 9)
(18 Required)

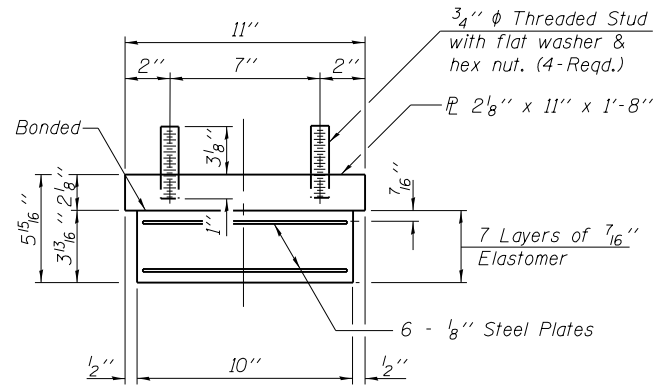


STEEL EXTENSION DETAIL

Cost included with Furnishing and Erecting Structural Steel (18 Required)

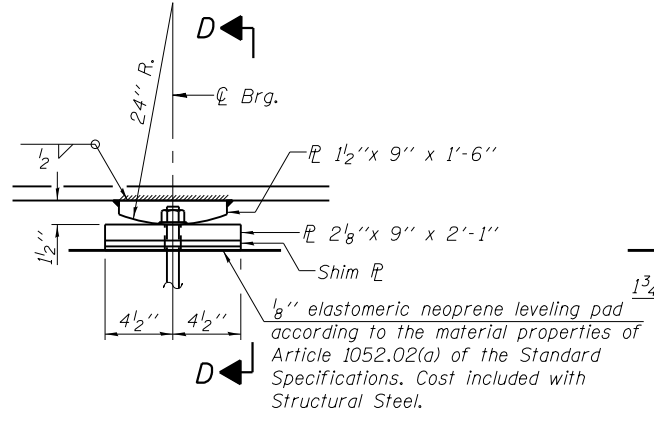


PLAN - TOP AND BOTTOM PLATE

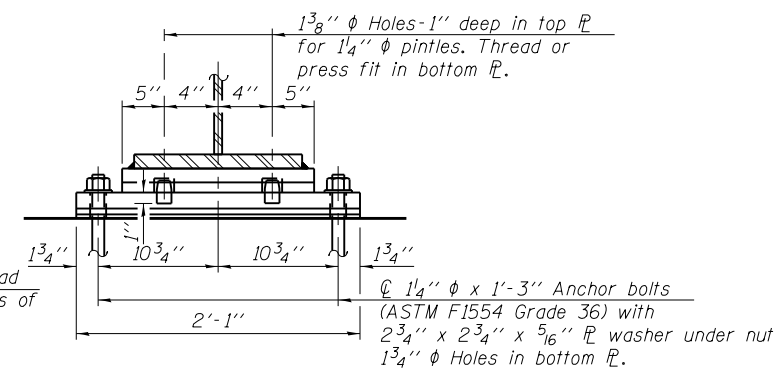


BEARING ASSEMBLY

Note:
Shim plates shall not be placed under Bearing Assembly.



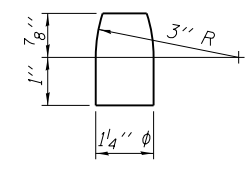
ELEVATION AT PIER



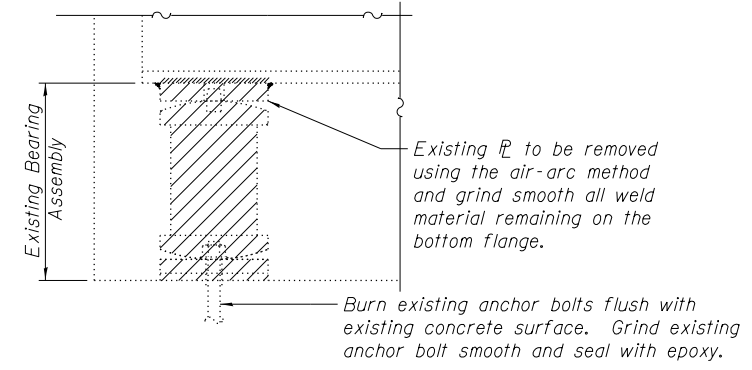
SECTION D-D

FIXED BEARING

(Beams 10 thru 12)
(3 Required)



PINTLE

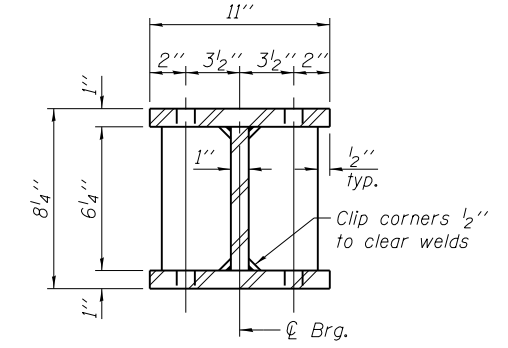


EXISTING BEARING REMOVAL DETAIL

Cost included with Jack and Remove Existing Bearings (18 Required)

Notes:
Anchor bolts shall be ASTM F1554 all-thread (or an Engineer-approved alternate material) of the grade(s) and diameter(s) specified. The corresponding specified grade of AASHTO M314 anchor bolts may be used in lieu of ASTM F1554.
Anchor bolts for side retainers may be cast in place or installed in holes drilled before or after members are in place.
Drilled and set anchor bolts shall be installed according to Article 521.06 of the Standard Specifications.
Side retainers and other steel members required for the elastomeric bearing assembly shall be included in the cost of Elastomeric Bearing Assembly, Type I.
Two 1/8 in. adjusting shims shall be provided for each bearing in addition to all other plates or shims and placed as shown on bearing details.
Anchor bolts, side retainers, steel extensions, and other steel members required for the elastomeric bearing assemblies shall be hot dip galvanized according to Article 520.03 of the Standard Specifications.
Existing top bearing plate at abutments welded to the existing beam must be removed. Contractor must exercise caution as to not damage the bottom flange.

SECTION C-C



BILL OF MATERIAL

Item	Unit	Total
Elastomeric Bearing Assembly, Type I	Each	24
Anchor Bolts, 1"	Each	48
Anchor Bolts, 1 1/4"	Each	6
Jack and Remove Existing Bearings	Each	18