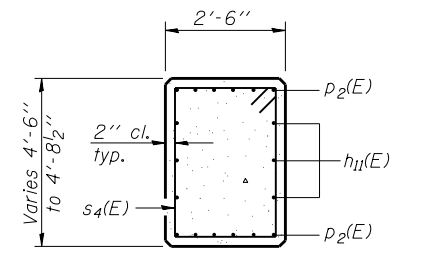


TOP PLAN

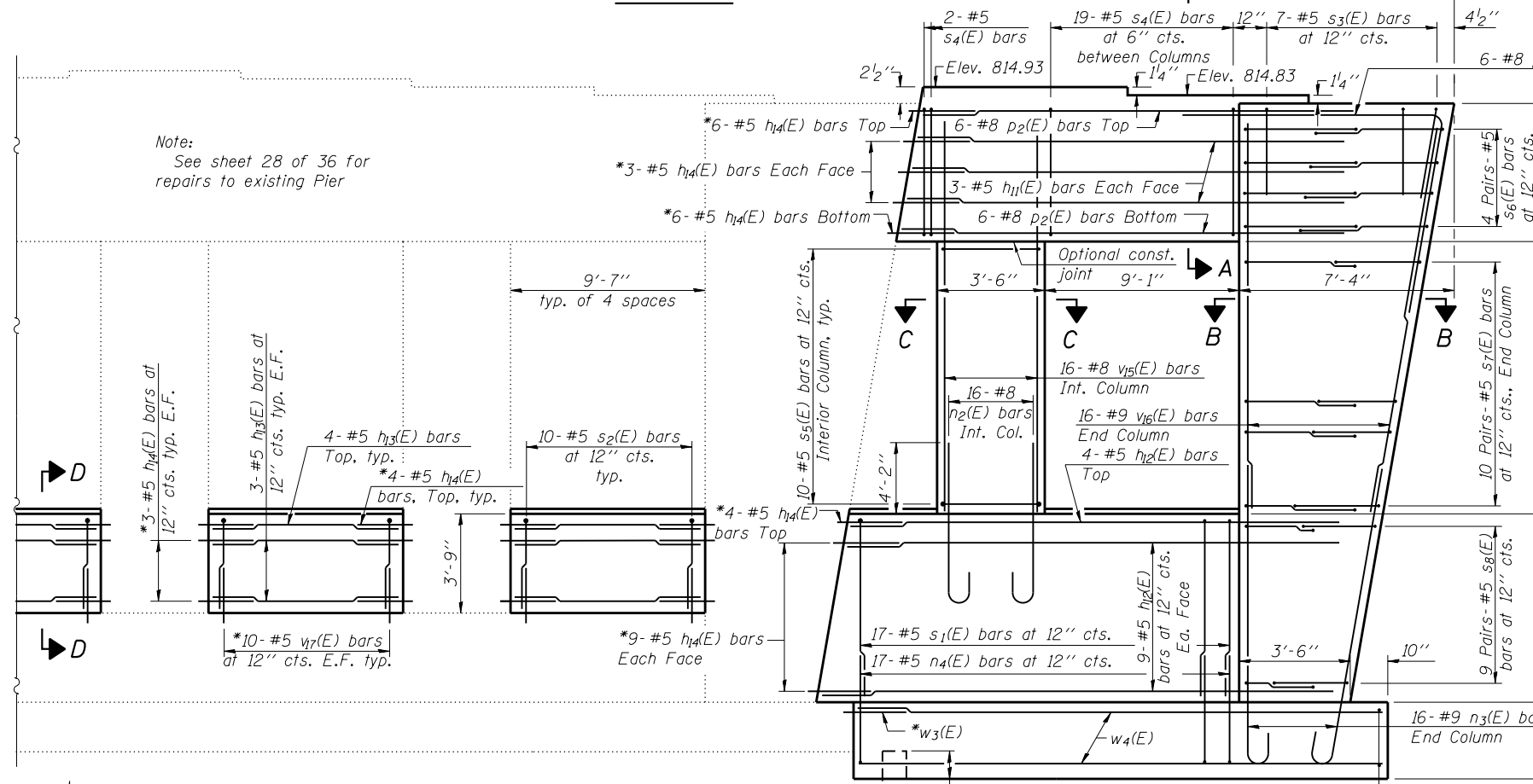
Notes:
Space reinforcement in cap to miss anchor bolts.
Pour steps monolithically with cap.
For details of piles, see sheet 34 of 36.

PILE DATA

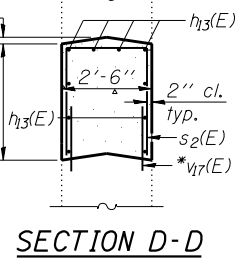
Type: Metal Shell - 14 in. dia. x 0.312 in. walls
Nominal Required Bearing: 468 kips
Allowable Resistance Available: 156 kips
Est. Length: 63 feet
No. Production Piles: 7
No. Test Piles: 1



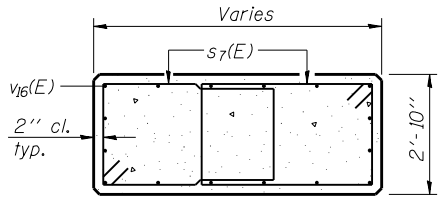
SECTION A-A



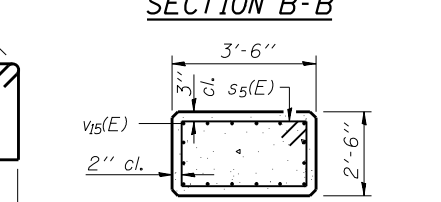
ELEVATION
(Looking North)



SECTION D-D



SECTION B-B

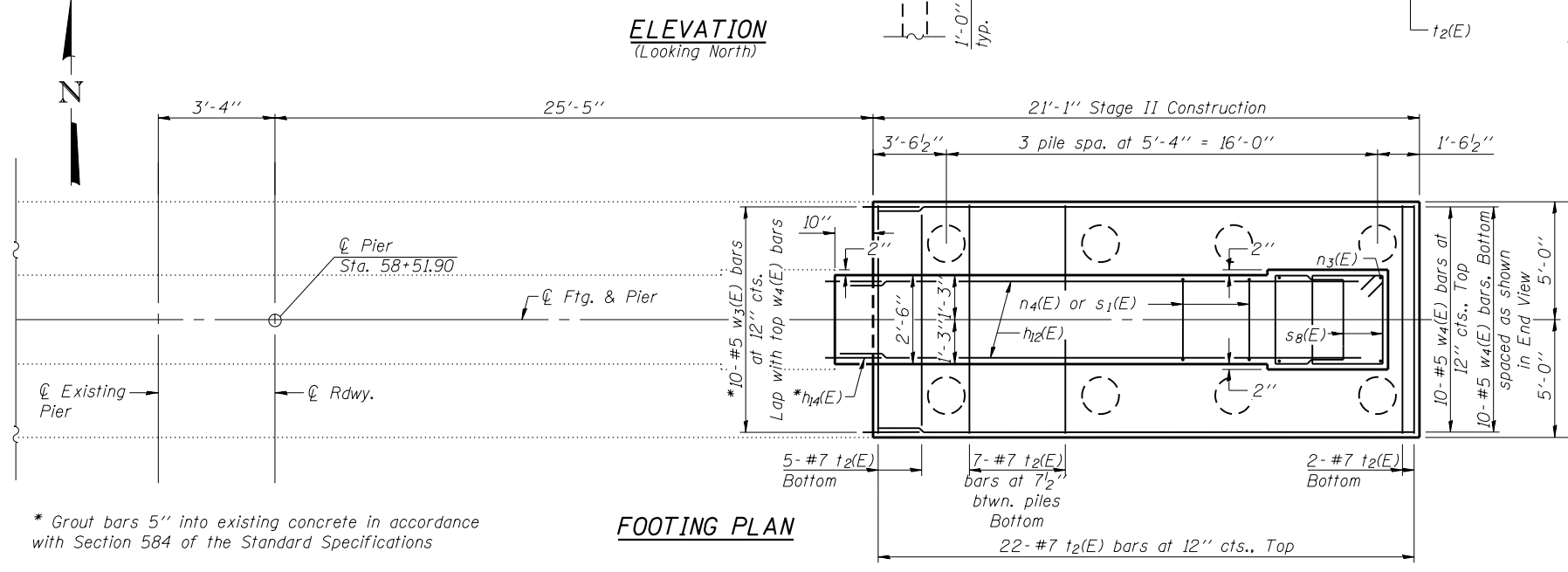


SECTION C-C

BARS s4(E) & s5(E)

BILL OF MATERIAL

Bar	No.	Size	Length	Shape
h11(E)	6	#5	16'-9"	—
h12(E)	22	#5	20'-9"	—
h13(E)	40	#5	9'-3"	—
h14(E)	120	#5	2'-8"	—
n2(E)	16	#8	6'-7"	U
n3(E)	16	#9	18'-3"	U
n4(E)	17	#5	12'-10"	U
p2(E)	12	#8	20'-9"	—
p3(E)	6	#8	12'-4"	7
s1(E)	17	#5	19'-10"	□
s2(E)	40	#5	9'-4"	□
s3(E)	7	#5	9'-5"	□
s4(E)	21	#5	13'-7"	□
s5(E)	10	#5	11'-3"	□
s6(E)	8	#5	13'-11"	□
s7(E)	20	#5	13'-1"	□
s8(E)	18	#5	11'-7"	□
t2(E)	50	#7	9'-8"	—
v15(E)	16	#8	13'-8"	—
v16(E)	16	#9	13'-10"	—
v17(E)	80	#5	2'-5"	—
w3(E)	10	#5	2'-8"	—
w4(E)	20	#5	20'-9"	—
Structure Excavation			Cu. Yd.	88
Concrete Structures			Cu. Yd.	72.7
Reinforcement Bars, Epoxy Coated			Pound	8480
Furnishing Metal Shell Piles 14" x 0.312"			Foot	441
Driving Piles			Foot	441
Test Pile Metal Shells			Each	1



FOOTING PLAN

END VIEW

BAR p3(E)

BARS n2(E) & n3(E)

A & B DIMENSIONS

Bar	A	B
n4(E)	2'-2"	5'-4"
s1(E)	2'-2"	8'-10"
s2(E)	2'-2"	3'-7"
s3(E)	2'-5"	3'-6"

BARS n4(E) & s1(E) thru s3(E)

BARS s6(E) thru s8(E)