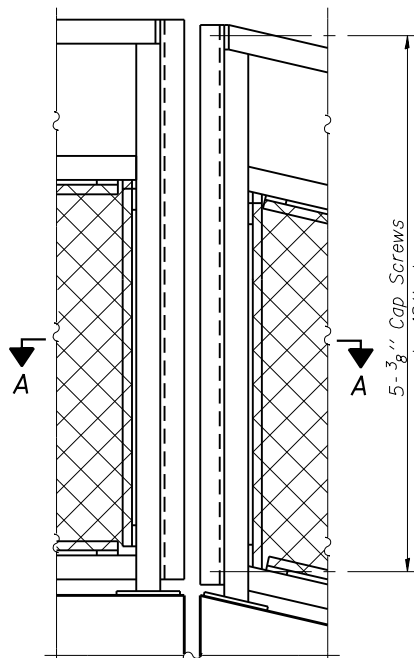
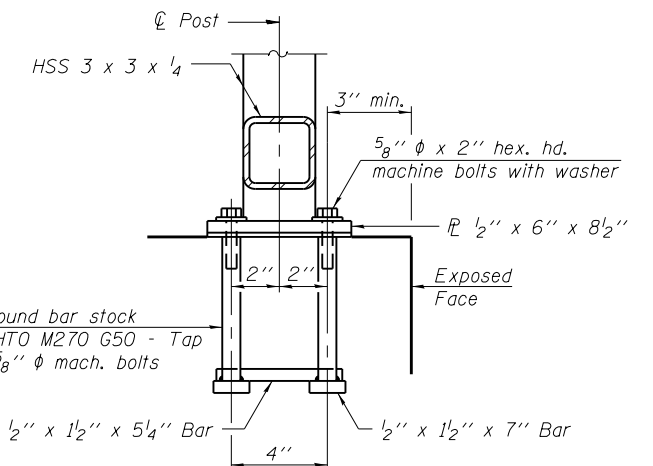
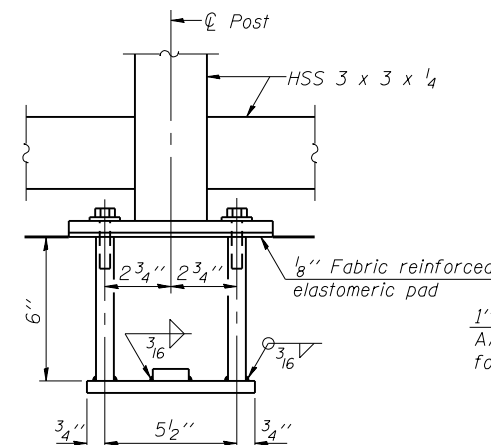


BICYCLE RAILING

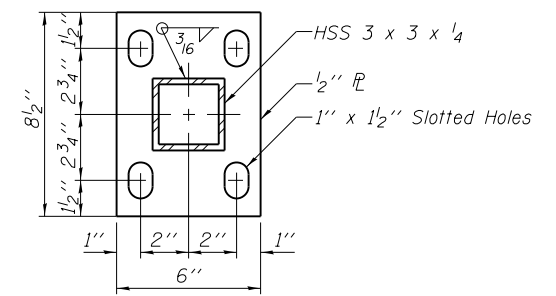


BICYCLE RAILING AT WINGWALL JOINT

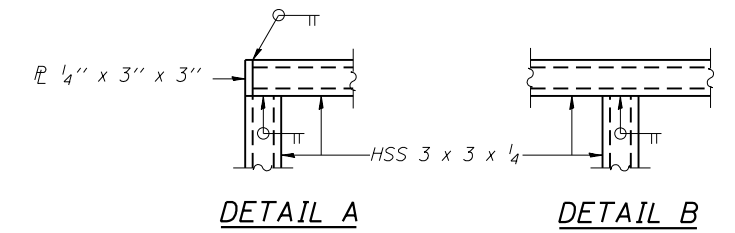


ANCHOR BOLT DETAILS

In lieu of the cast-in-place anchor device shown, the Contractor has the option of drilling and setting 5/8" ϕ anchor rods according to Article 509.06 of the Standard Specifications. Embedment shall be according to the manufacturer's specifications.

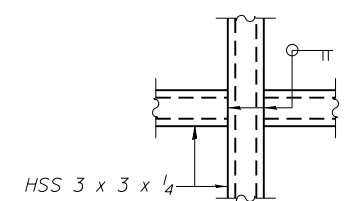


BASE PL



DETAIL A

DETAIL B

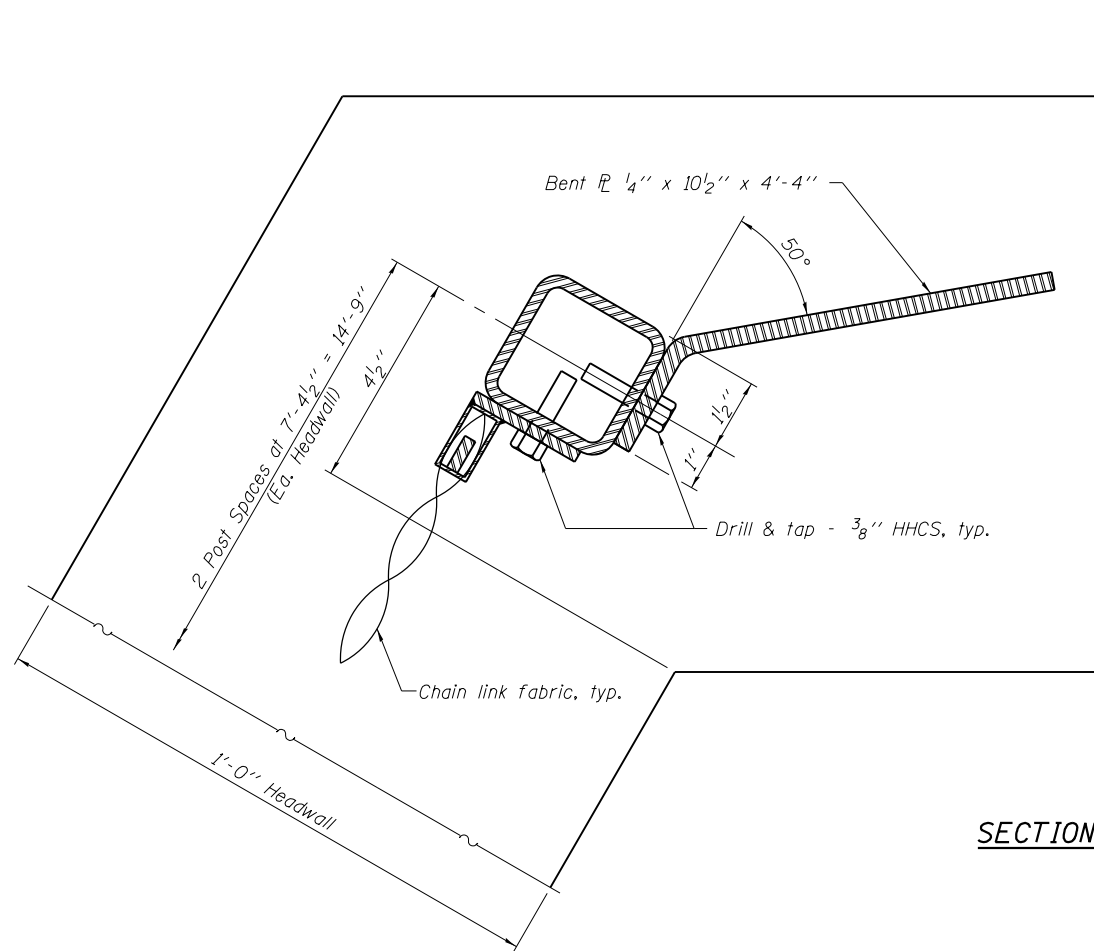


DETAIL C

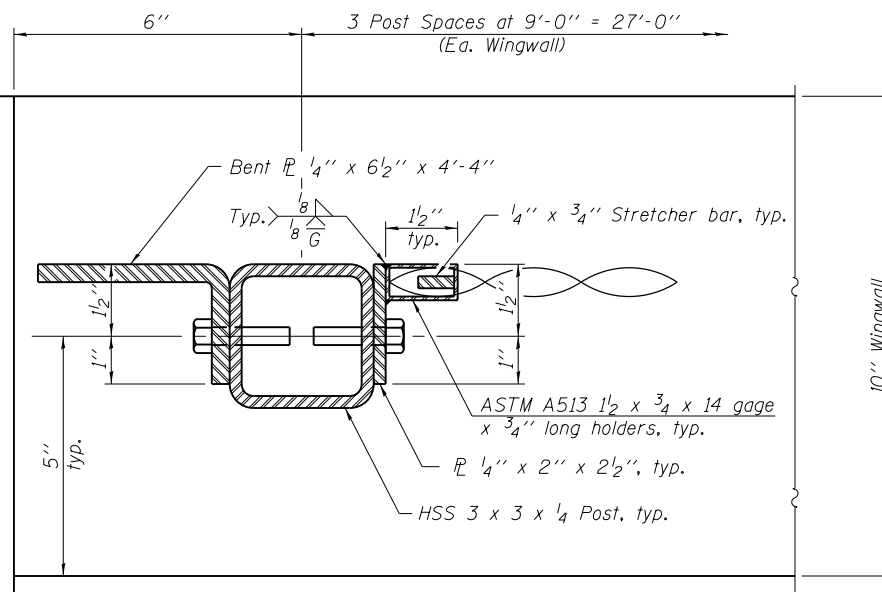
Notes:
 All steel rail elements shall be galvanized according to Article 509.05 of the Standard Specifications.
 Steel posts shall be installed vertical on the sloped top of wingwalls. Rails shall run parallel to the top of concrete.

BILL OF MATERIAL

Item	Unit	Quantity
Bicycle Railing	Foot	138



SECTION A-A



FILE NAME = 0727004-68683-003-Bicycle Railing.dgn	USER NAME = baswanson	DESIGNED - BAS	REVISED
		CHECKED - CMB	REVISED
		DRAWN - SGM	REVISED
		CHECKED - BAS	REVISED
MAURER-STUTZ ENGINEERS SURVEYORS	PLOT SCALE =		
	PLOT DATE = 1/24/2014		

STATE OF ILLINOIS
 DEPARTMENT OF TRANSPORTATION

BICYCLE RAILING
 STRUCTURE NO. 072-7004

SHEET NO. 3 OF 4 SHEETS

F.A.U. RTE. 6584/6585	SECTION 105	COUNTY PEORIA	TOTAL SHEETS 487	SHEET NO. 326
			CONTRACT NO. 68683	

ILLINOIS FED. AID PROJECT