

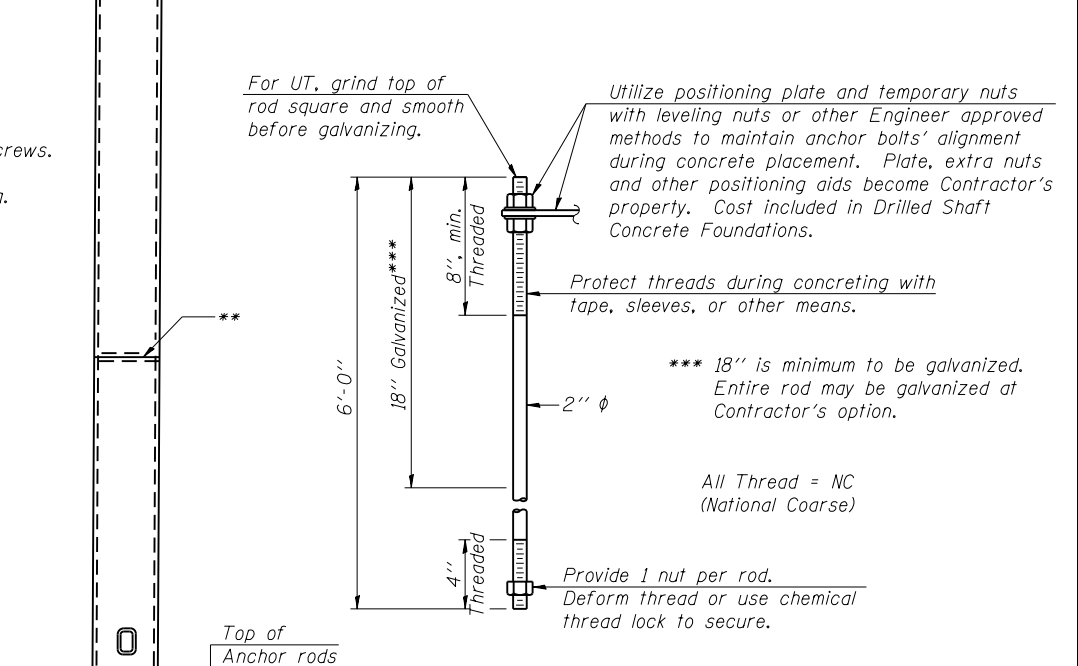
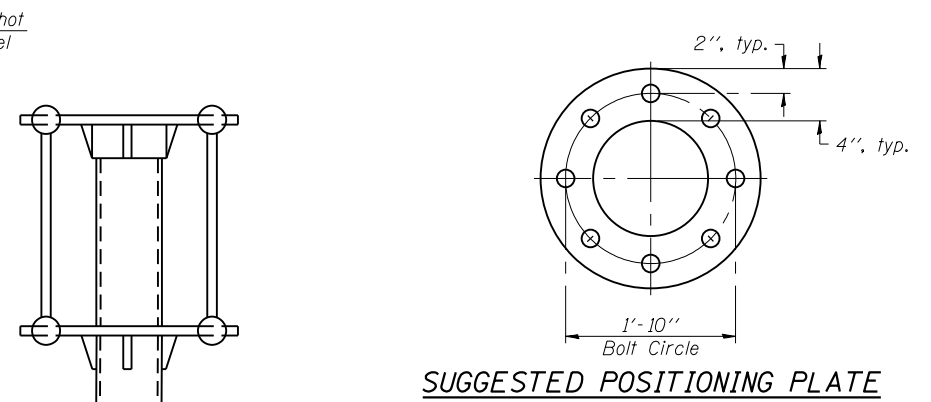
**DETAIL A**

\* Bent bars may be butt welded top and bottom or bottom only. In lieu of fabricated handhole frame as shown, may cut from 2" plate (rolling direction vertical). All cut faces to be ground to ANSI Roughness of 500  $\mu$ in or less.

\*\* Butt welded joint in post is only allowed for post heights (H) over 20 ft. in length. If used, weld procedure must be preapproved by Engineer and joint shall receive 100% RT or UT (tension criteria) at Contractor's expense.

Structure Number	Station	H
4C072S5006L005.53	61+01.00	21'-0"

Note: "H" based on 15'-0" or actual sign height, whichever is greater.



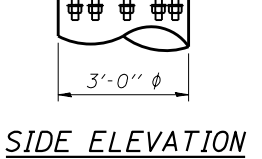
**ANCHOR ROD DETAIL**

Anchor rods shall conform to ASTM F1554 Grade 105. Galvanize the upper 18" (minimum\*\*\*) and associated AASHTO M291, Grade A, C or DH heavy hex nuts and hardened washers per AASHTO M232. No welding shall be permitted on rods. Provide a nut at bottom, a hexagon locknut and washer above base plate and a leveling nut and washer below base plate. Nuts shall each be tightened with 200 lb.-ft. minimum torque against base plate. Before or after threading, but before galvanizing, each anchor rod shall be ultrasonically tested (UT) by a Level II or III Inspector, qualified in accord with ANSI guidelines, to insure no rejectable flaws exist in the upper 18" (tension criteria). Cost of testing included in Drilled Shaft Concrete Foundations.

\*\*\* 18" is minimum to be galvanized. Entire rod may be galvanized at Contractor's option.

All Thread = NC (National Coarse)

Provide 1 nut per rod. Deform thread or use chemical thread lock to secure.



OSC-A-4

6-1-12



FILE NAME = 0468683-OSC-A-4.dgn  
 USER NAME = RALEE  
 PLOT SCALE =  
 PLOT DATE = 01/24/2014

DESIGNED - RAL  
 CHECKED - JAF  
 DRAWN - RAL  
 CHECKED - JAF

REVISED  
 REVISED  
 REVISED  
 REVISED

STATE OF ILLINOIS  
 DEPARTMENT OF TRANSPORTATION

CANTILEVER SIGN STRUCTURES - TYPE I-C-A TRUSS  
 SUPPORT POST - ALUMINUM TRUSS & STEEL POST

SHEET NO. 5 OF 9 SHEETS

F.A. RTE.	SECTION	COUNTY	TOTAL SHEETS	SHEET NO.
6584	105; (72-7HB)BY	PEORIA	487	336
6585				

CONTRACT NO. 68683  
 ILLINOIS FED. AID PROJECT