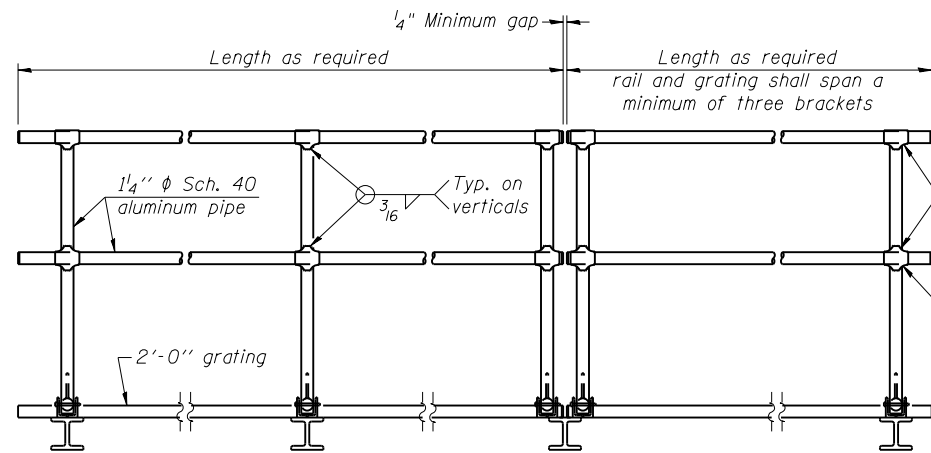


**SIDE ELEVATION**  
(Showing Safety Chain W/O Sign)

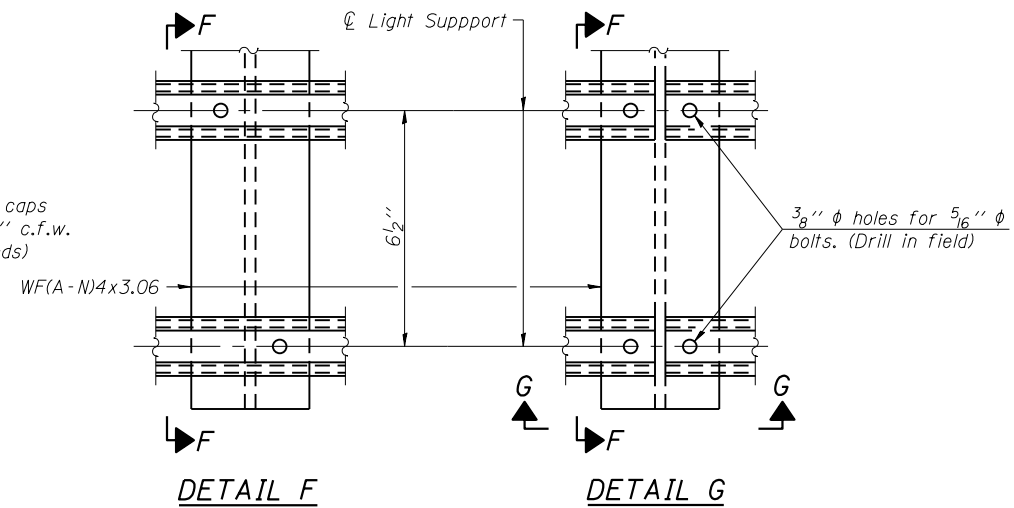


**FRONT ELEVATION**

**HANDRAIL DETAILS**

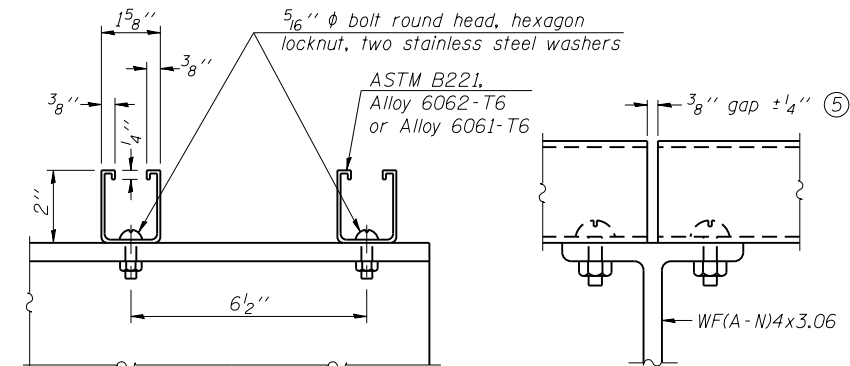
Handrail pipe shall be ASTM B241 or B429, Alloy 6063-T6 or Alloy 6061-T6.

- ① Install standard force-fit end caps or weld 1/8" end plates with 1/8" c.f.w. and grind smooth. (All rail ends)
- ② Horizontal handrail member shall be continuous thru fitting. Provide 7/16" hole in fitting for 3/8" bolt. Field drill 7/16" hole in horizontal rail member. Provide locknut and two stainless steel washers for bolt. (Use 5/16" eyebolts in 7/16" holes on top rail at ends only.)



**DETAIL F**

**DETAIL G**

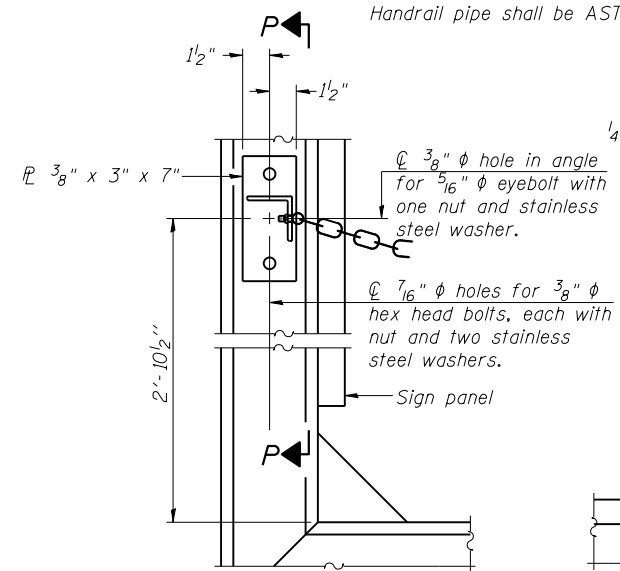


**SECTION F-F**

**SECTION G-G**

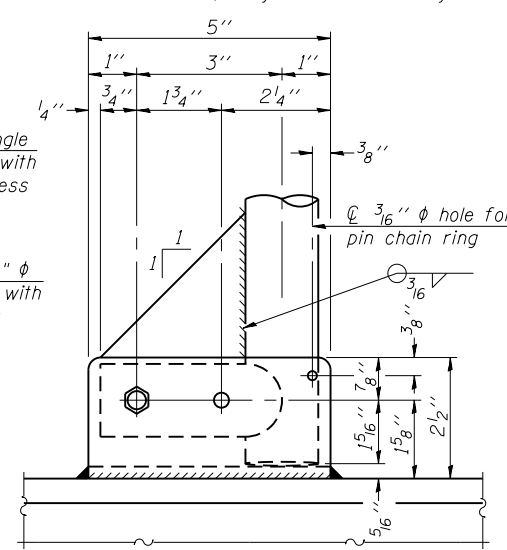
**LIGHTING FIXTURE MOUNTS (IF REQUIRED)**

- ⑤ Field cut ends of light support channels shall be free of burrs or hazardous projections and coated with zinc-rich primer or equivalent.

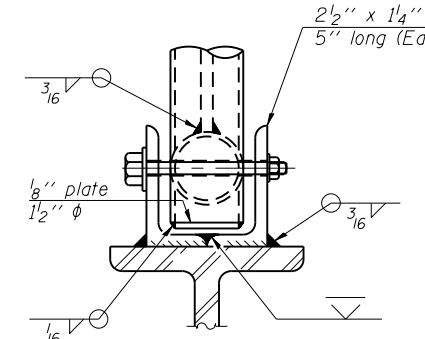


**ALTERNATE SAFETY CHAIN ATTACHMENT**  
(With Sign Present)

Items not shown same as "Side Elevation" of "Handrail Details"



**SIDE ELEVATION**

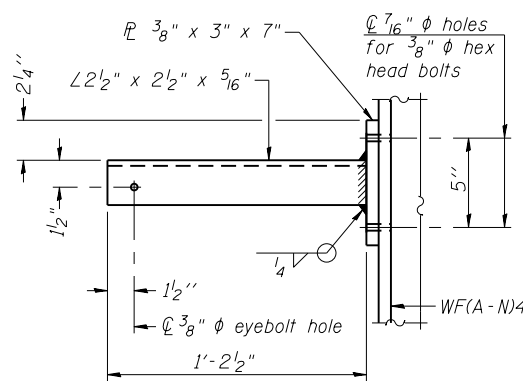


**FRONT ELEVATION**

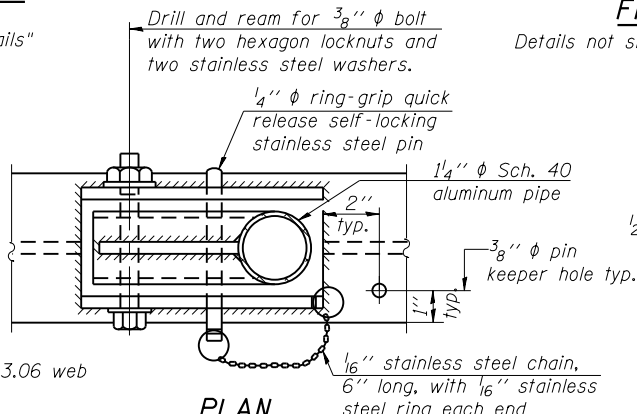
Details not shown same as "ELEVATION" at right.

**ELEVATION AT HANDRAIL JOINT** ④

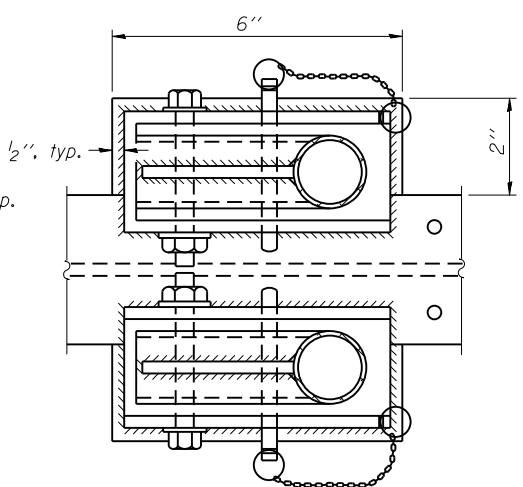
Details not shown same as "FRONT ELEVATION"



**SECTION P-P**

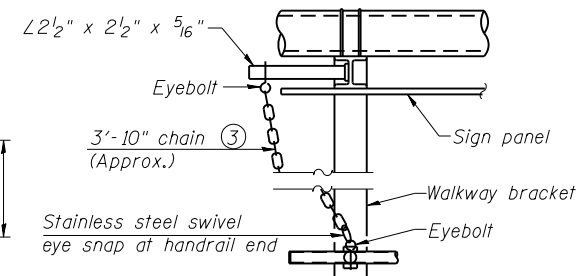


**DETAIL E HANDRAIL HINGE**



**PLAN AT HANDRAIL JOINT**

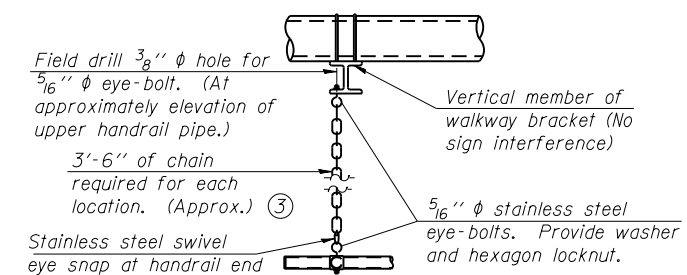
Details not shown same as "PLAN"



**ALTERNATE SAFETY CHAIN ATTACHMENT**

Details not shown similar to "Safety Chain" Details (Walkway omitted for clarity)

- ③ 3/16" Type 304L stainless steel chain, approximately 12 links per foot.
- ④ Extrusions may be used in lieu of the details shown, with approval of the Engineer.



**SAFETY CHAIN**

One required for each end of each walkway.

OSC-A-8

6-1-12

FILE NAME = 0468683-OSC-A-8.dgn	USER NAME = RALEE	DESIGNED - RAL	REVISED	<b>STATE OF ILLINOIS DEPARTMENT OF TRANSPORTATION</b>	<b>CANTILEVER SIGN STRUCTURES - HANDRAIL DETAILS ALUMINUM TRUSS &amp; STEEL POST</b>	F.A. RTE.	SECTION	COUNTY	TOTAL SHEETS	SHEET NO.	
	PLOT SCALE =	CHECKED - JAF	REVISED			6584	105; (72-7HB)BY	PEORIA	487	339	
	PLOT DATE = 01/24/2014	DRAWN - RAL	REVISED			6585					CONTRACT NO. 68683
		CHECKED - JAF	REVISED			ILLINOIS FED. AID PROJECT					