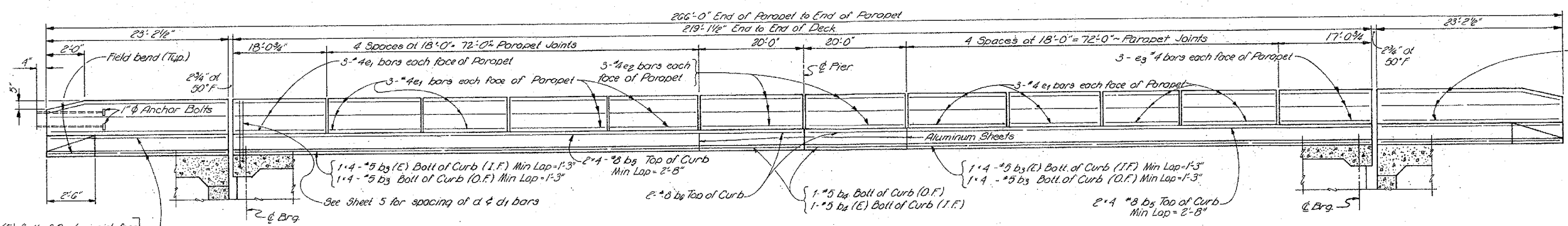
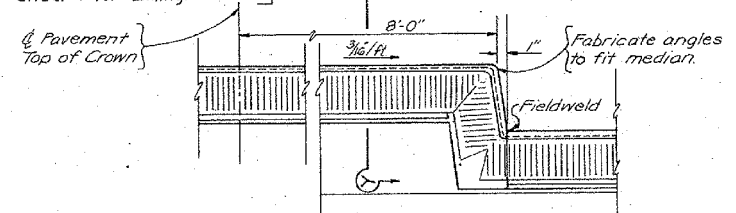


FAA05	72-7HB	PEORIA	100	43
FED. ROAD DIST. NO.	ILLINOIS	FED. AID PROJ.		

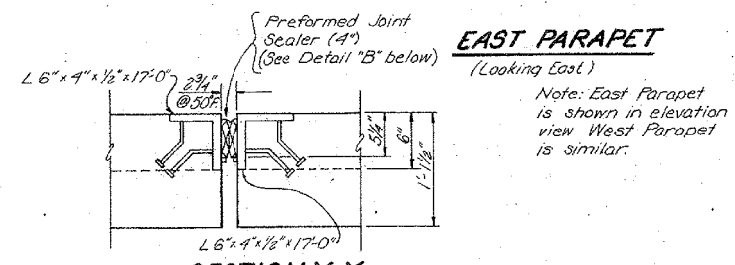


3-#4e bars each face See Sheet 7 for Billing (Typ.)
See Standard drawing 2341 for method of attaching guard-rail at entrance ends. For exit ends see Standard drawing 2340.

1-#5 b3(E) Bolt of Curb - inside face
1-#5 b3 Bolt of Curb - outside face
2-#8 b1 Top of Curb - inside face (Typical each end) See Sheet 7 for Billing.



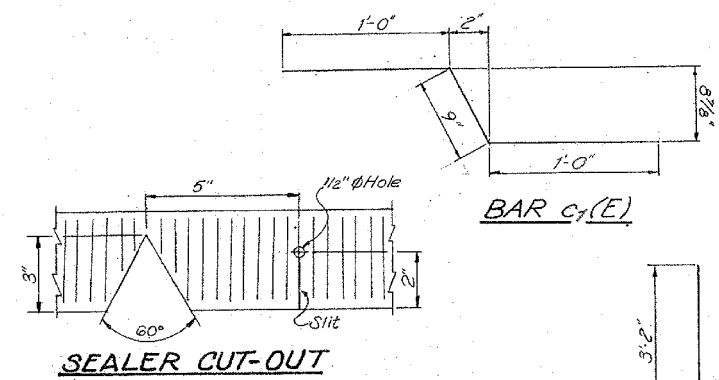
SECTION X-X
(See Sheet 5)



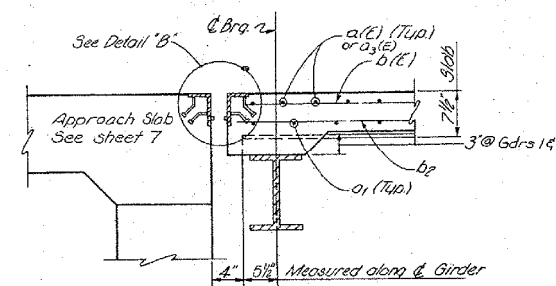
SECTION Y-Y

EAST PARAPET
(Looking East)

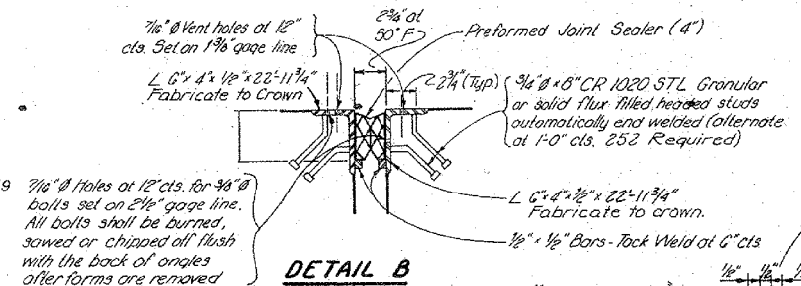
Note: East Parapet is shown in elevation view West Parapet is similar.



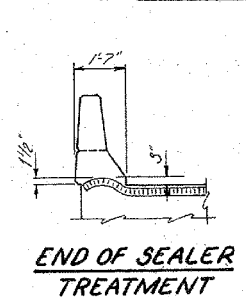
SEALER CUT-OUT



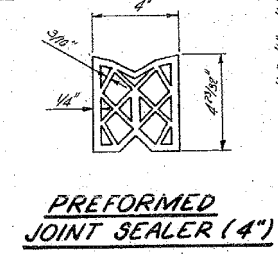
SECTION B-B
(See Sheet 5)



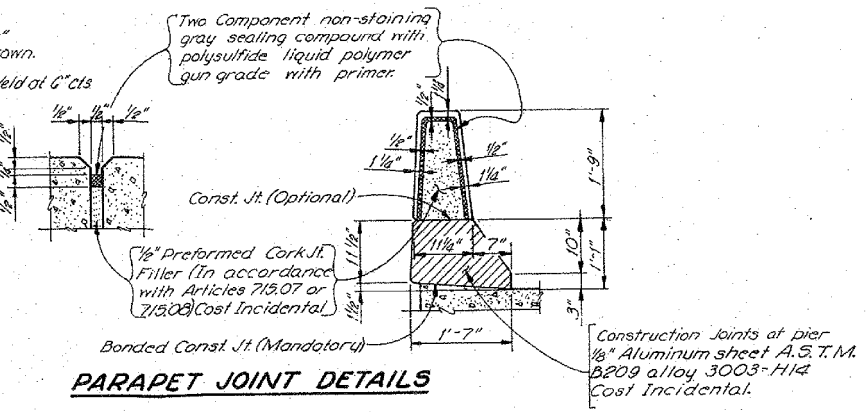
DETAIL B



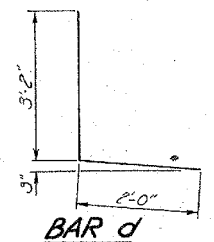
END OF SEALER TREATMENT



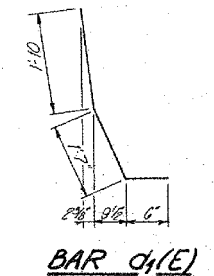
PREFORMED JOINT SEALER (4")



PARAPET JOINT DETAILS



BAR d



BAR c1(E)

SUPERSTRUCTURE BILL OF MATERIAL

Bar	No	Size	Length	Shape
a(E)	526	#5	28'-6"	
a	658	#5	32'-5"	
a1(E)	526	#6	4'-0"	
a1(E)	526	#5	35'-11"	
b1(E)	672	#5	29'-4"	
b1(E)	192	#6	24'-4"	
b2	496	#5	28'-4"	
b3(E)	16	#5	23'-5"	
b3	16	#5	23'-5"	
b4(E)	4	#5	19'-8"	
b4	4	#5	19'-8"	
b5	32	#8	24'-5"	
b6	8	#8	19'-8"	
c(E)	219	#5	15'-8"	
c1(E)	438	#5	2'-9"	
d	438	#4	5'-2"	
d1(E)	478	#5	3'-11"	
e1	108	#4	17'-8"	
e2	24	#4	19'-8"	
e3	12	#4	16'-8"	
Reinforcement Bars	lbs.		43,640	
Reinforcement Bars (Epoxy Coated)	lbs.		73,340	
Class 'X' Concrete	Yds ³		4615	

STATE OF ILLINOIS
DEPARTMENT OF TRANSPORTATION
SUPERSTRUCTURE DETAILS
PROJECT: F.A. 405
ILL. HWY 174 OVER F.A. ROUTE 405
F.A.405 SECTION 72-7HB
PEORIA COUNTY
STA. 929+03.18

DESIGNED	LRW
CHECKED	DEB
DRAWN	R.D. Warrack
CHECKED	DEB

MAURER-STUTZ ENGINEERS SURVEYORS