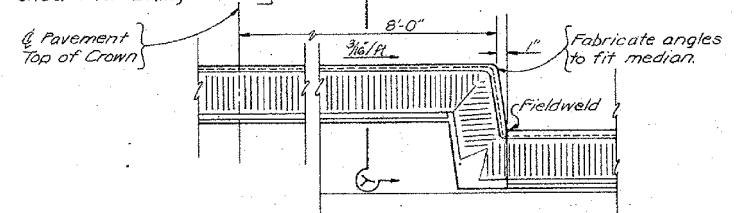


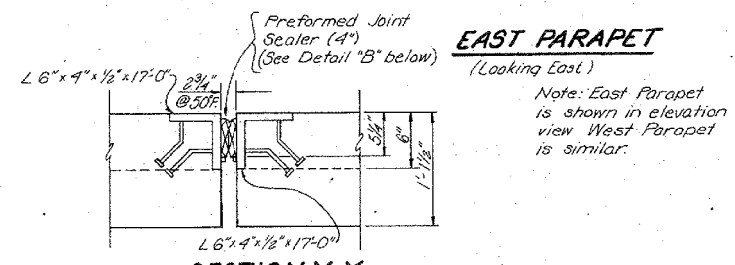
3-#4e1 bars each face
See Sheet 7 for Billing
(Typ.)

See Standard drawing 2341
for method of attaching guard-
rail at entrance ends. For
exit ends see Standard
drawing 2340.

1-#5 b3(E) Bolt of Curb - inside face
1-#5 b3 Bolt of Curb - outside face
2-#8 b1 Top of Curb - 1 ea. face
(Typical each end) See
Sheet 7 for Billing



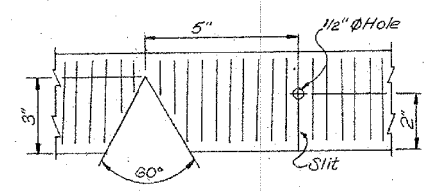
SECTION X-X
(See Sheet 5)



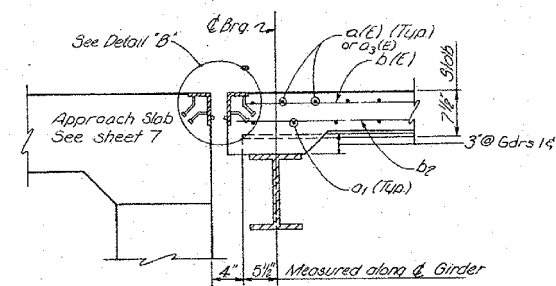
SECTION Y-Y

EAST PARAPET
(Looking East)

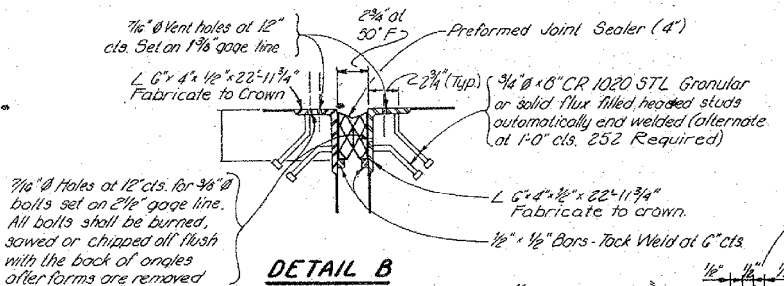
Note: East Parapet
is shown in elevation
view West Parapet
is similar.



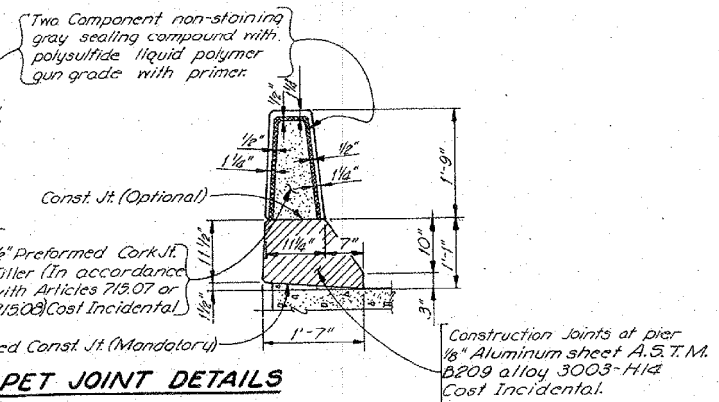
SEALER CUT-OUT



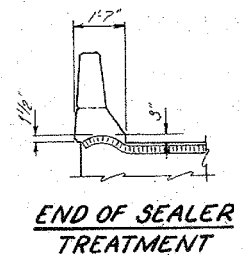
SECTION B-B
(See Sheet 5)



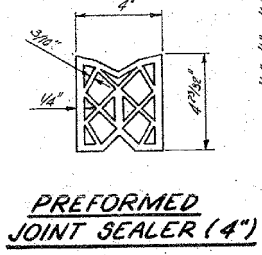
DETAIL B



PARAPET JOINT DETAILS

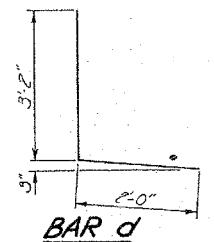


**END OF SEALER
TREATMENT**

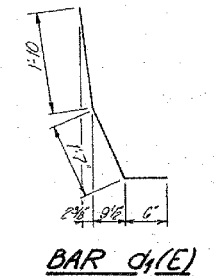


**PREFORMED
JOINT SEALER (4")**

BAR c1(E)



BAR d



BAR c4(E)

**SUPERSTRUCTURE
BILL OF MATERIAL**

Bar	No	Size	Length	Shape
a1(E)	526	#5	23'-6"	
a1	658	#5	32'-5"	
a2(E)	526	#6	4'-0"	
a3(E)	526	#5	35'-11"	
b1(E)	672	#5	23'-4"	
b1(E)	192	#6	24'-4"	
b2	496	#5	23'-4"	
b3(E)	16	#5	23'-5"	
b3	16	#5	23'-5"	
b4(E)	4	#5	19'-8"	
b4	4	#5	19'-8"	
b5	32	#8	24'-5"	
b6	8	#8	19'-8"	
c(E)	219	#5	15'-8"	
d(E)	438	#5	2'-9"	
d	438	#4	5'-2"	
d1(E)	478	#5	3'-11"	
e1	108	#4	17'-8"	
e2	24	#4	19'-8"	
e3	12	#4	16'-8"	
Reinforcement Bars	lbs.		43,640	
Reinforcement Bars (Epoxy Coated)	lbs.		73,340	
Class X Concrete	Yds ³		4615	

STATE OF ILLINOIS
DEPARTMENT OF TRANSPORTATION
SUPERSTRUCTURE DETAILS
PROJECT: F.A. 405
ILL. HWY. 174 OVER F.A. ROUTE 405
F.A.405 SECTION 72-7HB
PEORIA COUNTY
STA. 929+03.18

DESIGNED	LRW
CHECKED	DEB
DRAWN	R.P. Wernock
CHECKED	DEB

FILE NAME =	USER NAME = wlewis	DESIGNED -	REVISED -
S:\237\2013\23713009.00\11enRd\PI\11\CADD	CADD Sheets\0468683-sht-Exist Plans07-SN0720	DRAWN -	REVISED -
Default	PLOT SCALE = 2.0000' / in.	CHECKED -	REVISED -
	PLOT DATE = 1/24/2014 3:19:59 PM	DATE -	REVISED -

F.A.U. R.T.E.	SECTION	COUNTY	TOTAL SHEETS	SHEET NO.
6584	105; (72-7HB)BY	PEORIA	487	347
6585				CONTRACT NO. 68683