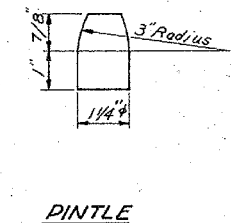
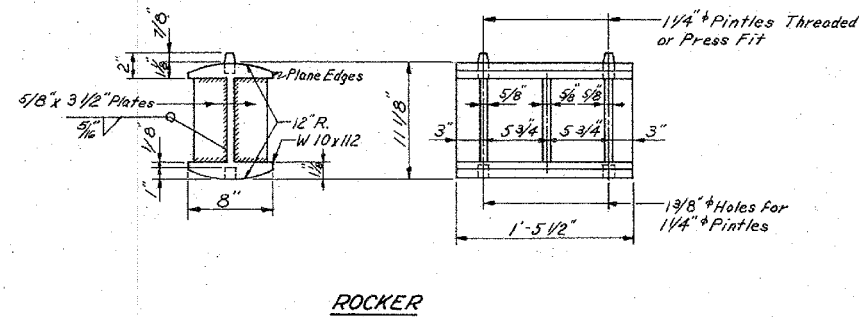
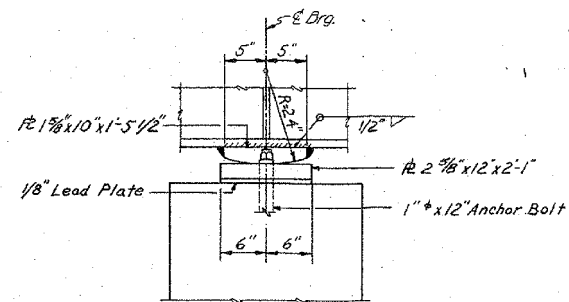
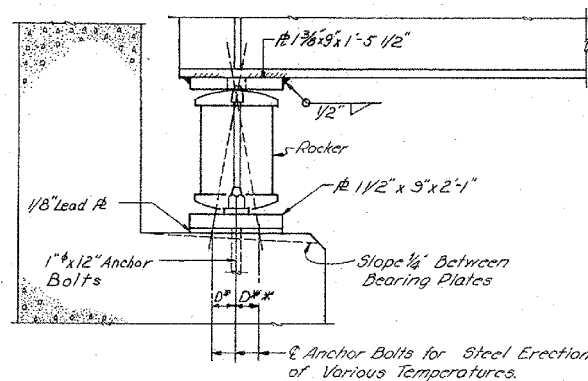


ROUTE NO.	SECTION	COUNTY	TOTAL SHEETS	SHEET NO.
FA. 405	72-74B	PEORIA	180	46
FED. ROAD DIST. NO. 4		ILLINOIS	FED. AID PROJ.	

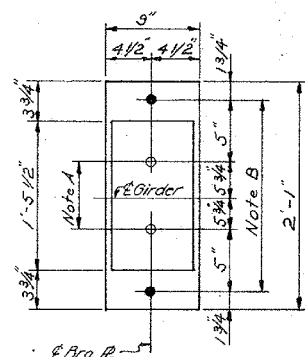


SECTION

ELEVATION

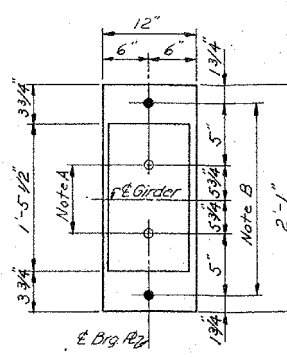
ROCKER

PINTLE



NOTE A
1 3/8" Holes - 1" Deep in Top R for Pintles. Thread or Press Fit Pintles into Bottom R

NOTE B
1 1/2" Holes for 1" Anchor Bolts 5/16" 2 1/2" x 2 1/2" R Washers Under Nut



* TOP OF WEB ELEVATIONS

Girder No.	N. Abut.	Splice 1	Pier	Splice 2	S. Abut.
1	819.80	819.77	819.63	819.58	819.05
2	819.92	819.89	819.75	819.69	819.17
3	820.04	820.00	819.87	819.81	819.29
4	820.15	820.12	819.98	819.92	819.40
5	820.27	820.23	820.10	820.04	819.52
6	820.15	820.12	819.98	819.92	819.40
7	820.04	820.00	819.87	819.81	819.29
8	819.92	819.89	819.75	819.69	819.17
9	819.80	819.77	819.63	819.58	819.05

INTERIOR GIRDER REACTION TABLE

Reactions	N. Abutment	Pier	S. Abutment
R ₂ (K)	50.1	185.9	49.3
R ₄ (K)	48.3	75.4	47.7
Impact (K)	10.3	16.1	10.2
R(Total) (K)	108.7	277.4	107.2

STRESS TABLE

(Composite at Positive Moment Regions only)

INTERIOR GIRDER MOMENT TABLE

Properties	At 1st Span 2	At Pier	At 2nd Span 3
I _s (in ⁴)	20679	52859	20679
I _c (in ⁴)	34569	---	34569
S _s (in ³)	1029	2004	1029
S _c (in ³)	1406	---	1406
I _b (K/')	0.930	1.114	0.930
M _b (K)	660	1750	636
F _s (Ksi)	7.70	10.48	7.42
S _b (K/')	0.352	0.352	0.352
M ₃ (K)	305.3	502.6	296.1
M ₄ (K)	937	855.5	916
M(Imp) (K)	200	182.7	196
Total (K)	1442.3	1540.8	1408.1
f _a (Ksi)	12.30	9.23	12.02
f _s (Total) (Ksi)	20.00	19.71	19.44
VR (K)	57.9	---	58.1

* For Fabrication Only

* SEAT ELEVATIONS

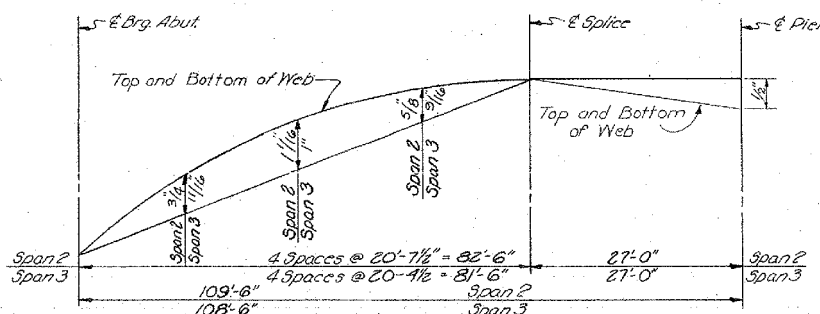
Girder No.	N. Abut.	Pier	S. Abut.
1	814.52	815.07	813.77
2	814.64	815.19	813.89
3	814.75	815.30	814.00
4	814.87	815.42	814.12
5	814.99	815.53	814.24
6	814.87	815.42	814.12
7	814.75	815.30	814.00
8	814.64	815.19	813.89
9	814.52	815.07	813.77

* For Girder Bearings

NOTES ON SETTING OF ANCHOR BOLTS AT EXP. BRG.

- D* (Side of brg. away from fixed brg.)
D* = 1/8" per each 100' of expansion for every 15° fall below the normal temp. of 50° F.
D** (Side of brg. toward fixed brg.)
D** = 1/8" per each 100' of expansion for every 15° rise above the normal temp. of 50° F.
- After beams have been erected and dimensions D* & D** determined, holes shall be drilled and anchor bolts shall be grouted in place. All fixed anchor bolts may be built into the masonry.

BEARING ASSEMBLY DETAILS



Designed	D.E.B.
Checked	L.R.W.
Drawn	R.P.W., J.L.K., M.C.K., E.J.G.
Checked	D.E.B.

FILE NAME =	USER NAME = wlewis	DESIGNED -	REVISED -
S:\237\2013\23713009.00\11\enRdPh11\CADD	CADD Sheets\0468683-sht-Exist Plans\0-SN072	DRAWN -	REVISED -
Default	PLOT DATE = 1/24/2014 3:20:49 PM	CHECKED -	REVISED -
		DATE -	REVISED -

FOR INFORMATION ONLY

ALLEN ROAD IMPROVEMENTS
EXISTING BRIDGE PLANS

SCALE: SHEET OF SHEETS STA. TO STA.

F.A.U. RTE.	SECTION	COUNTY	TOTAL SHEETS	SHEET NO.
6584	105 (72-74B)BY	PEORIA	487	350
6585			CONTRACT NO. 68683	
ILLINOIS FED. AID PROJECT				