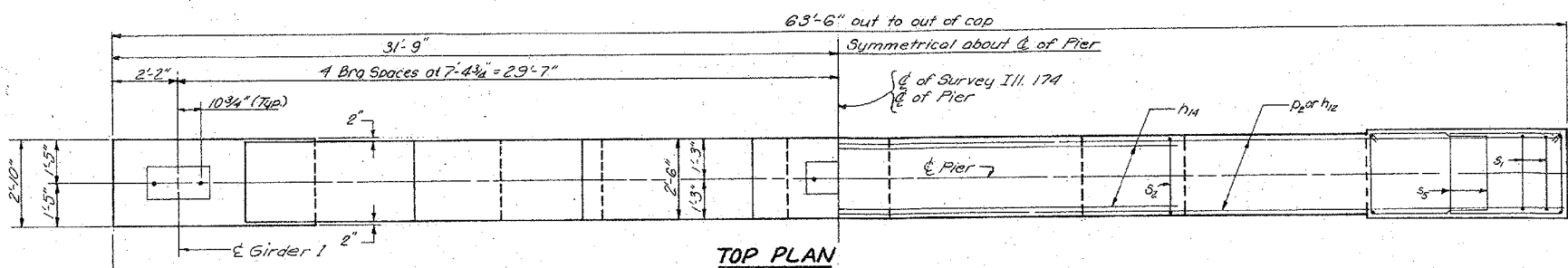


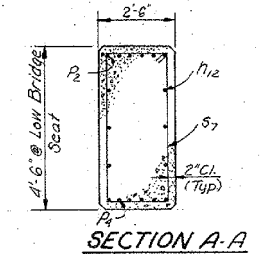
ROUTE NO.	SECTION	COUNTY	TOTAL SHEETS	SHEET NO.
FA 405	72-7HB	PEORIA	180	49
FED. ROAD DIST. NO. 4		ILLINOIS	FED. AID PROJ.	

Notes:
 Space Reinforcement in cap to miss anchor bolts.
 All edges shall have standard 3/4" chamfers except as noted.
 Pour steps monolithically with cap.
 Patterned and Sandblasted Surface Treatment on end surface of exterior columns.

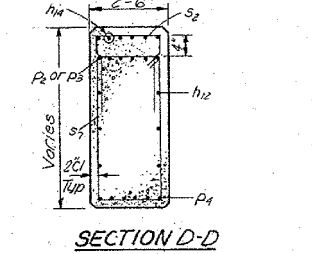
DETAIL "A"



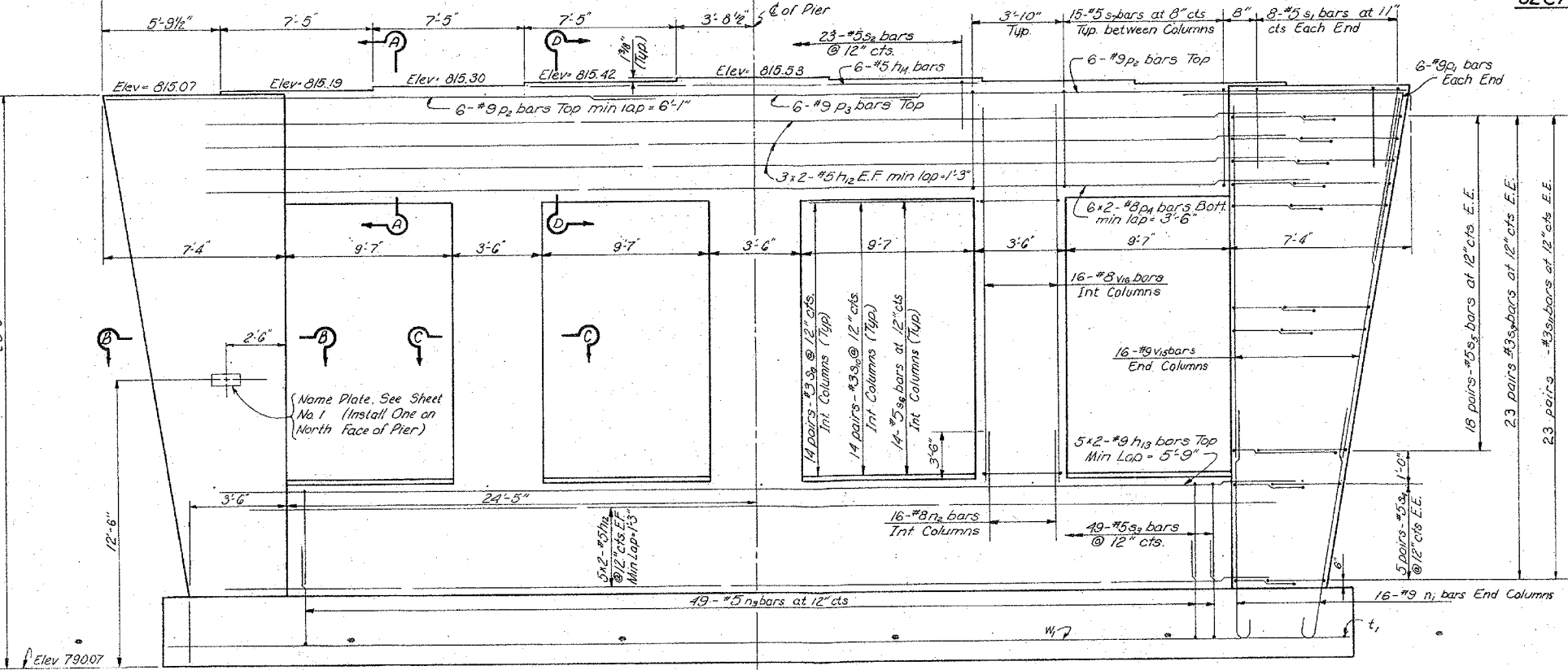
TOP PLAN



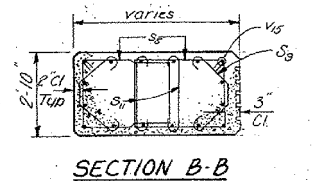
SECTION A-A



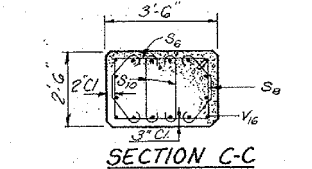
SECTION D-D



ELEVATION (LOOKING SOUTH)



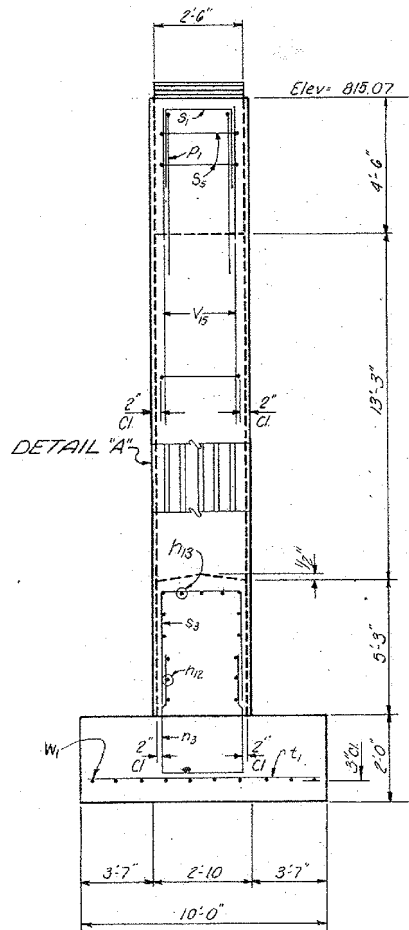
SECTION B-B



SECTION C-C

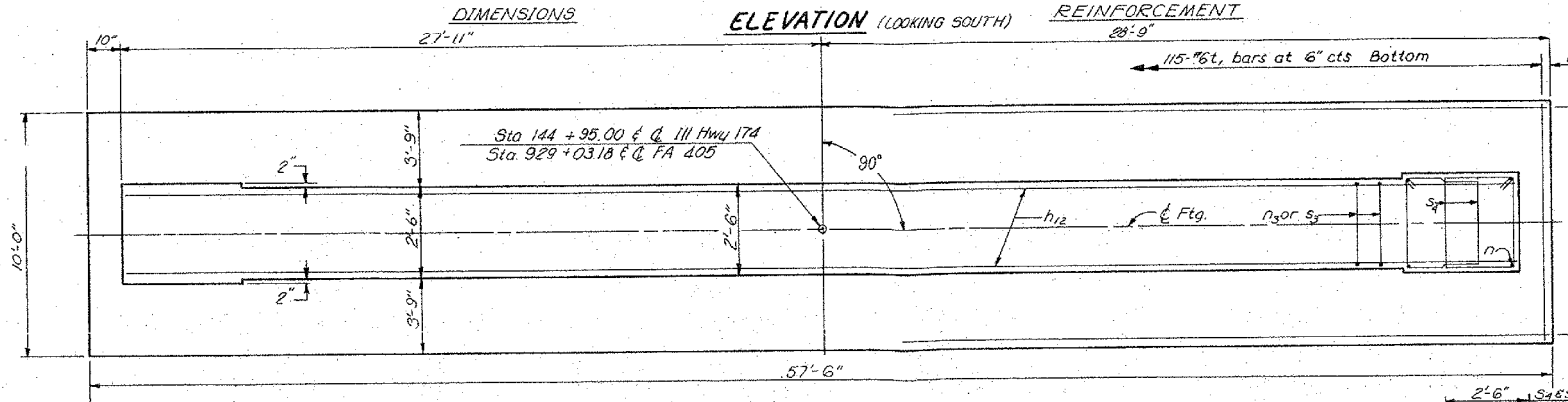
BILL OF MATERIAL

Bar	No.	Size	Length	Shape
h12	32	#5	26'-4"	U
h13	10	#9	30'-8"	U
h14	6	#5	21'-11"	U
n1	32	#9	12'-9"	U
n2	18	#8	8'-6"	U
n3	49	#5	11'-0"	U
p1	12	#9	15'-0"	U
p2	12	#9	28'-1"	U
p3	6	#9	19'-2"	U
p4	12	#8	28'-10"	U
s1	16	#5	9'-2"	U
s2	23	#5	5'-2"	U
s3	49	#5	11'-0"	U
s4	20	#5	10'-11"	U
s5	72	#5	13'-7"	U
s6	42	#5	11'-3"	U
s7	60	#5	13'-7"	U
s8	84	#3	3'-4"	U
s9	92	#3	3'-10"	U
s10	84	#3	2'-10"	U
s11	92	#3	3'-4"	U
v1	115	#8	9'-8"	U
v2	32	#9	17'-3"	U
v3	48	#8	17'-3"	U
w1	20	#6	29'-7"	U
Class X Concrete				Cu Yds 127.0
Reinforcement Bars				Lbs 18,420



END VIEW

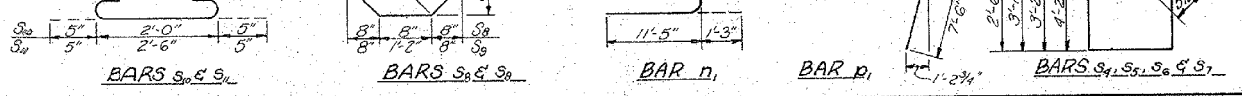
Max footing pressure = 2.7 tsf



FOOTING PLAN

A&B DIMENSIONS

BAR	A	B
n3	2'-2"	4'-5"
s1	2'-2"	3'-6"
s2	2'-2"	1'-6"
s3	2'-2"	4'-5"



DESIGNED	LRW
CHECKED	DEB
DRAWN	JS
CHECKED	DEB

MAURER-STUTZ ENGINEERS SURVEYORS

FILE NAME =	USER NAME = wlewis	DESIGNED -	REVISED -
S:\237\2013\23713009\00\A11enRdPier\I1\CADD	CADD Sheets\0468683-sht-Exist Plans\2-SN0722	DRAWN -	REVISED -
Default	PLOT SCALE = 2.0000' / in.	CHECKED -	REVISED -
	PLOT DATE = 1/24/2014 3:21:25 PM	DATE -	REVISED -

STATE OF ILLINOIS DEPARTMENT OF TRANSPORTATION

FOR INFORMATION ONLY
 ALLEN ROAD IMPROVEMENTS
 EXISTING BRIDGE PLANS

SCALE: SHEET OF SHEETS STA. TO STA.

STATE OF ILLINOIS
 DEPARTMENT OF TRANSPORTATION
 PROJECT: FA 405
 ILL. HWY. 174 OVER F.A. ROUTE 405
 SECTION 72-7HB
 PEORIA COUNTY
 STA. 929+03.18

F.A.U. RTE.	SECTION	COUNTY	TOTAL SHEETS	SHEET NO.
6584	105; (72-7HB)BY	PEORIA	487	352
6585			CONTRACT NO. 68683	

Rev 9-18-99