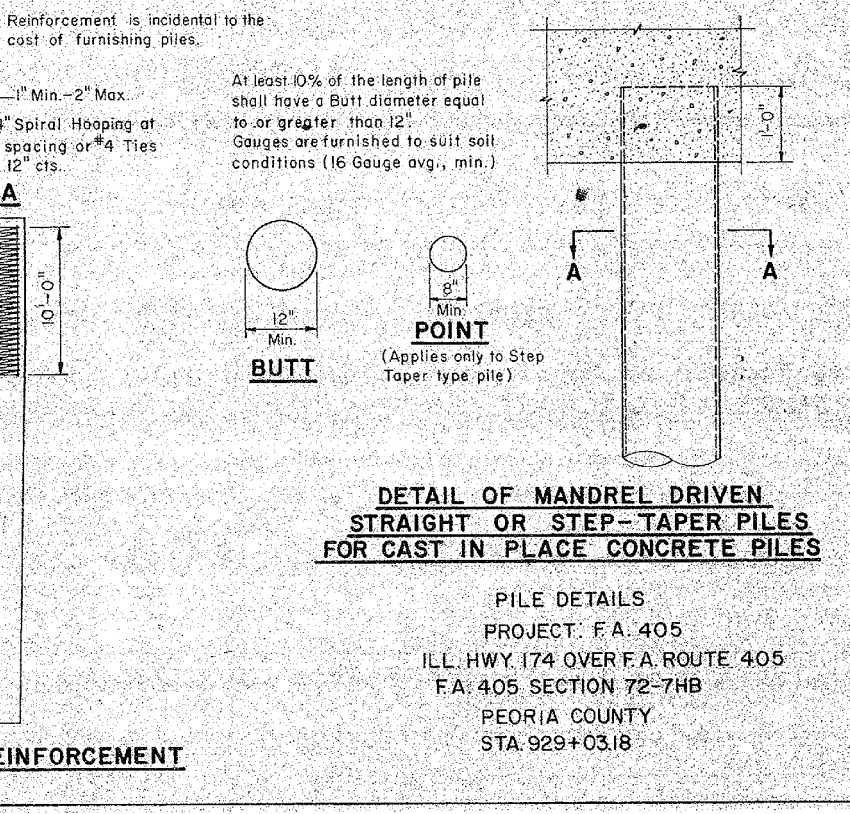
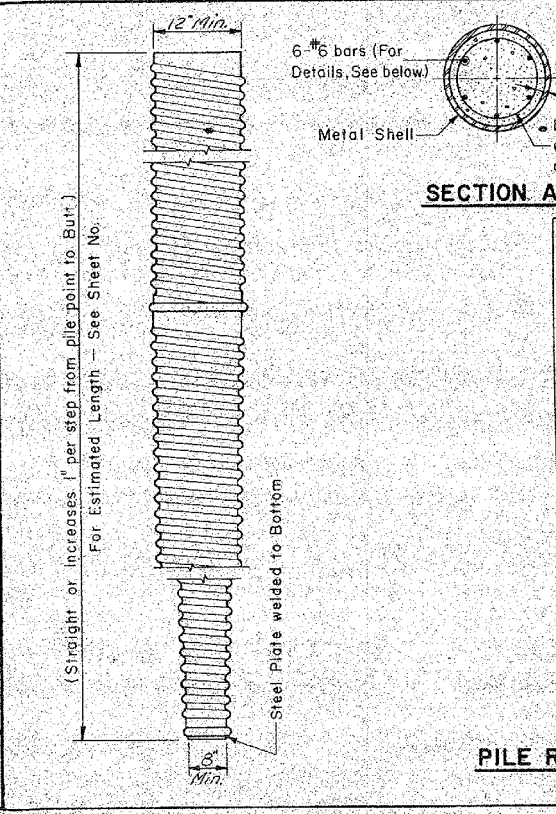
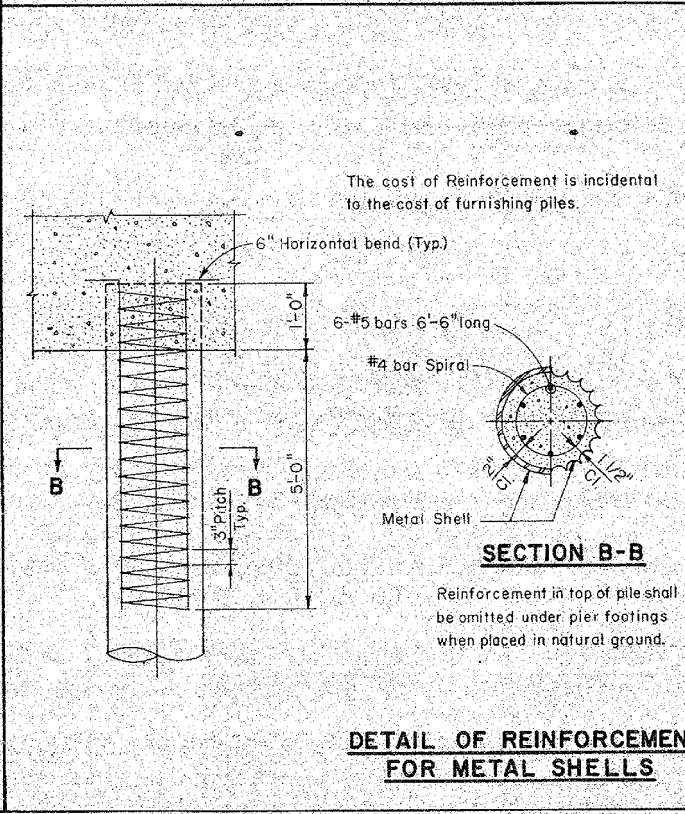
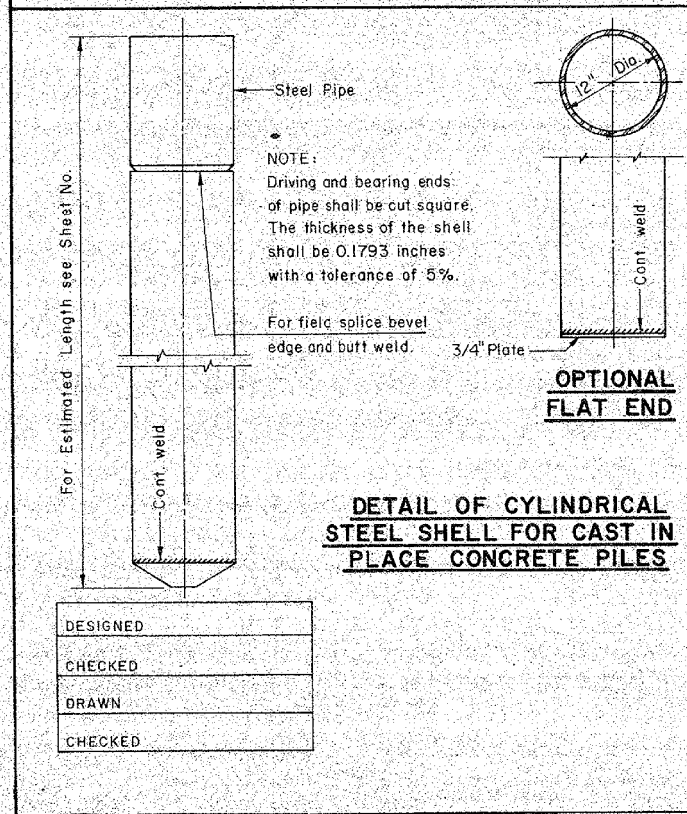
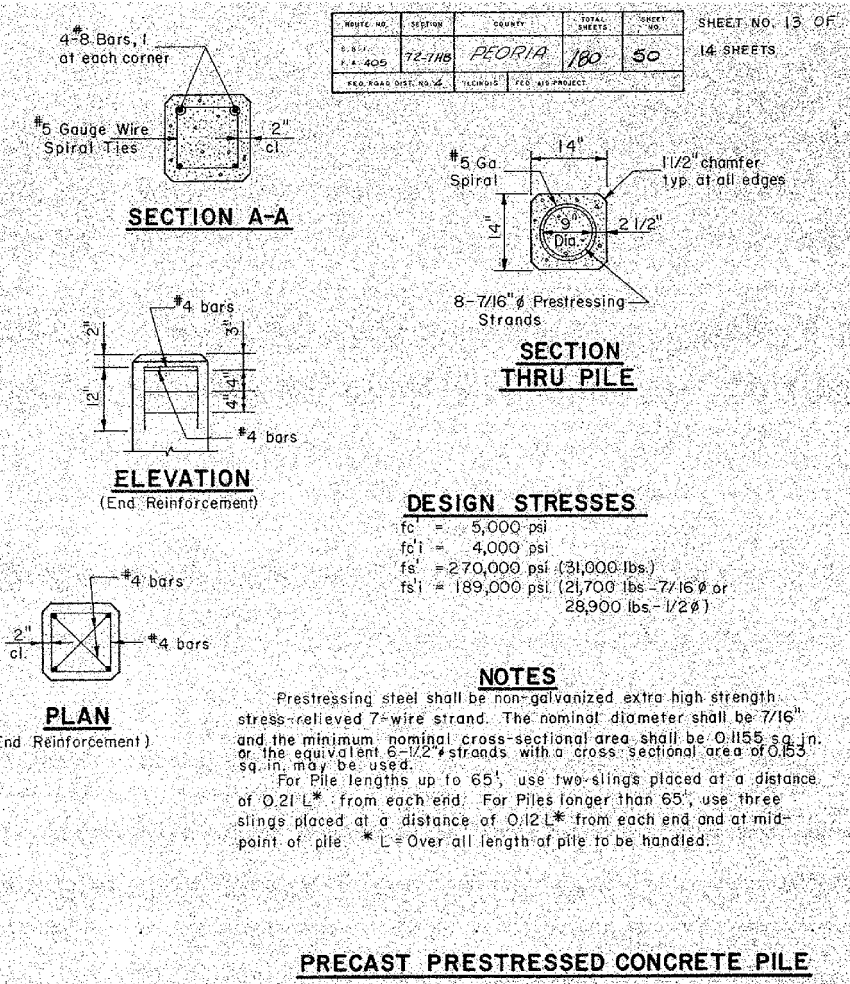
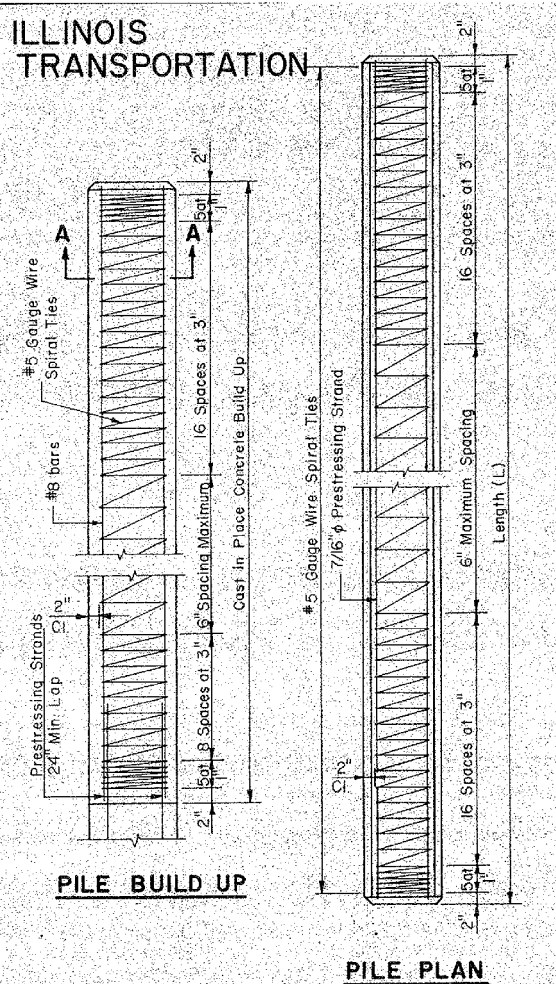
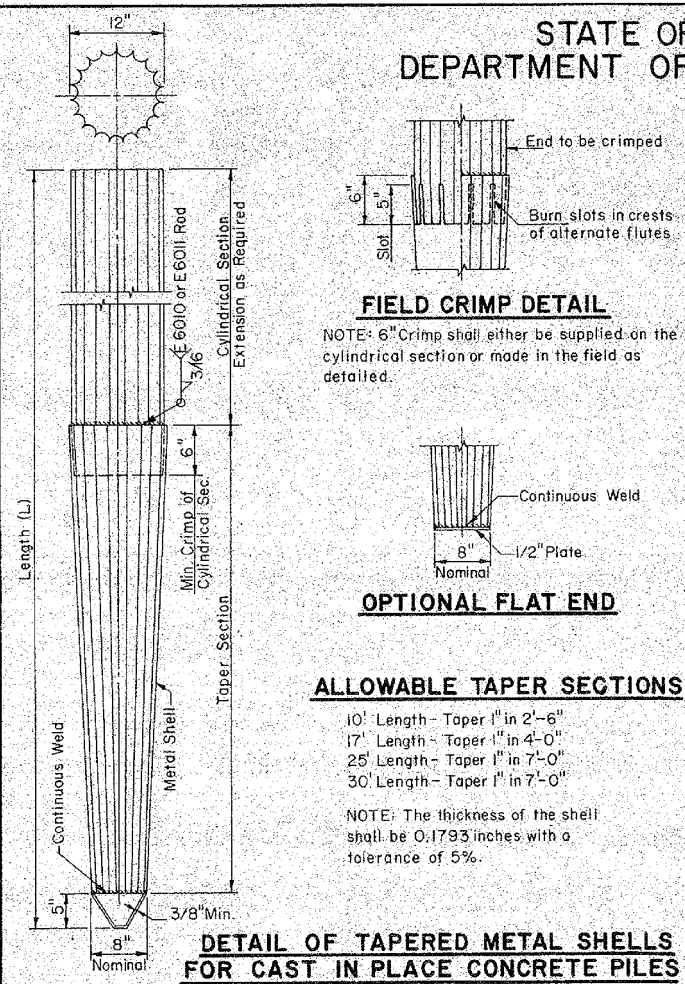
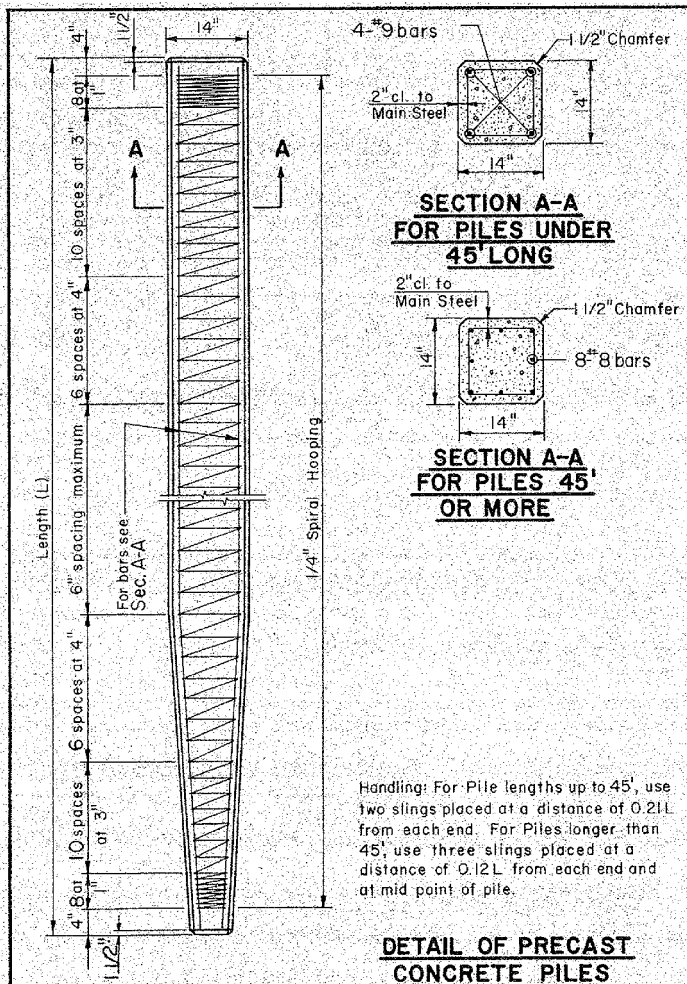


STATE OF ILLINOIS  
DEPARTMENT OF TRANSPORTATION

PROJECT NO.	SECTION	COUNTY	TOTAL SHEETS	SHEET NO.
F.A. 405	72-7HB	PEORIA	180	50
REG. ROAD DIST. NO.	LOCALITY	FED. AID PROJECT		

SHEET NO. 13 OF 14 SHEETS



DESIGNED
CHECKED
DRAWN
CHECKED

MAURER-STUTZ  
ENGINEERS SURVEYORS

FILE NAME =	USER NAME = wllewis	DESIGNED -	REVISED -
S:\237\2013\23713009.00\A11enRdPh1\CADD	CADD Sheets\0468683-sht-Exist Plans\3-SN072	DRAWN -	REVISED -
	PLOT SCALE = 2.0000' / in.	CHECKED -	REVISED -
Default	PLOT DATE = 1/24/2014 3:21:44 PM	DATE -	REVISED -

STATE OF ILLINOIS  
DEPARTMENT OF TRANSPORTATION

FOR INFORMATION ONLY  
ALLEN ROAD IMPROVEMENTS  
EXISTING BRIDGE PLANS

SCALE: SHEET OF SHEETS STA. TO STA.

F.A.U. RTE.	SECTION	COUNTY	TOTAL SHEETS	SHEET NO.
6584	105; (72-7HB)BY	PEORIA	487	353
6585				CONTRACT NO. 68683

ILLINOIS FED. AID PROJECT