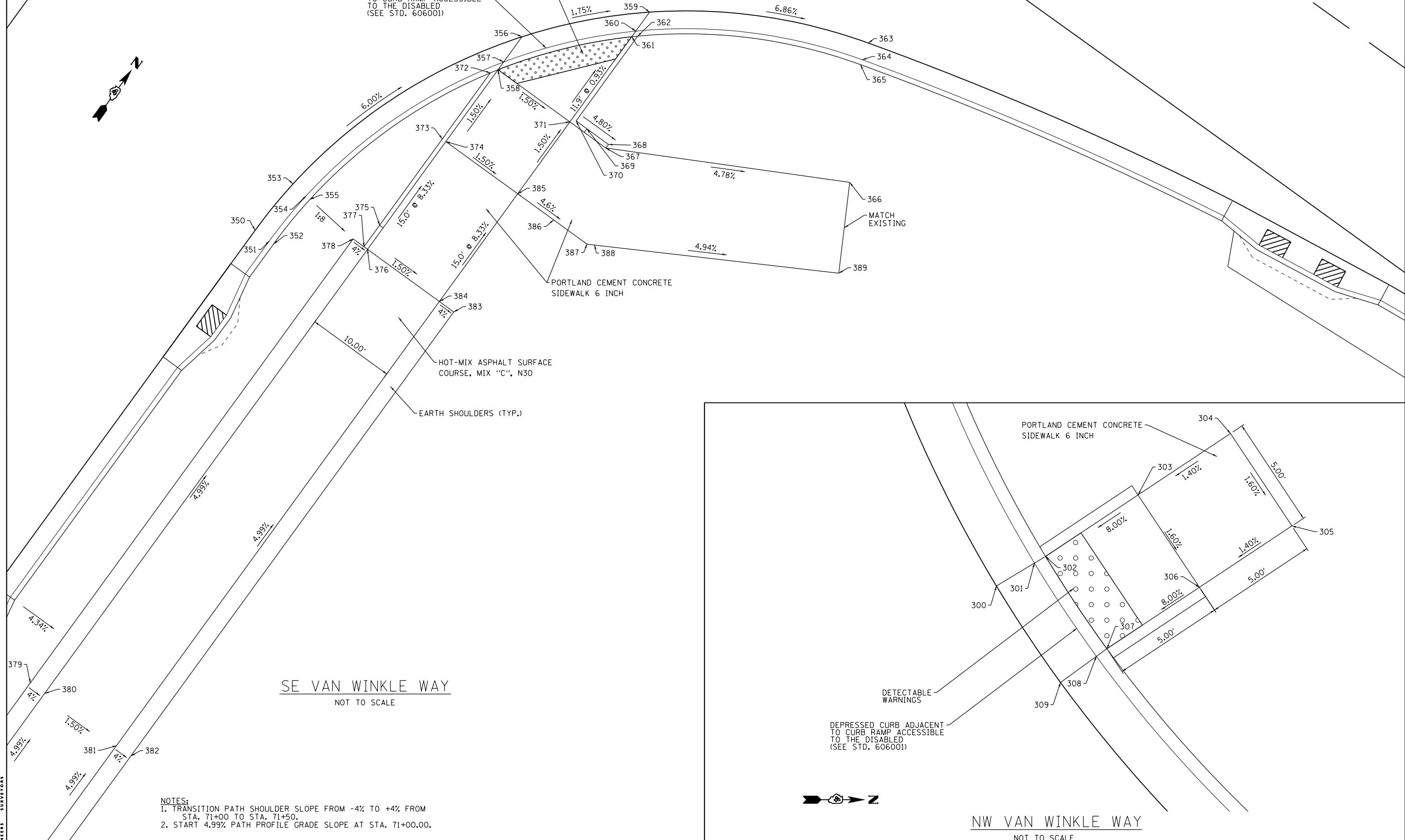




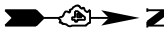
DEPRESSED CURB ADJACENT TO CURB RAMP ACCESSIBLE TO THE DISABLED (SEE STD. 606001)

DETECTABLE WARNINGS

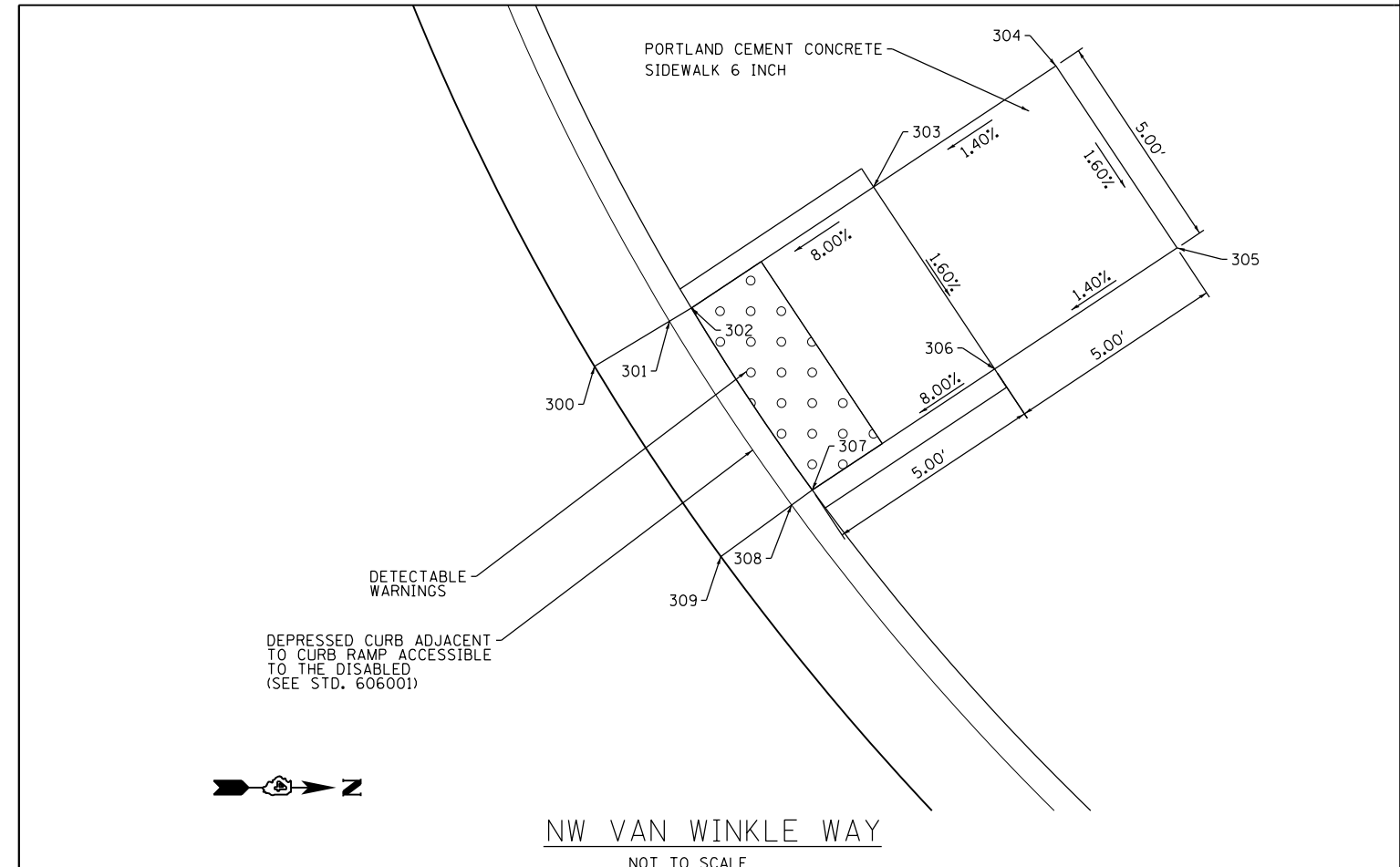


SE VAN WINKLE WAY  
NOT TO SCALE

- NOTES:
1. TRANSITION PATH SHOULDER SLOPE FROM -4% TO +4% FROM STA. 71+00 TO STA. 71+50.
  2. START 4.99% PATH PROFILE GRADE SLOPE AT STA. 71+00.00.



NW VAN WINKLE WAY  
NOT TO SCALE



MAURER-STUTZ ENGINEERS SURVEYORS

FILE NAME = S:\237\2013\23713009\00\AllenRdPhII\CADD	USER NAME = wlewis	DESIGNED -	REVISED -
CADD Sheets\D468683-sht-details-ADA2.dgn		DRAWN -	REVISED -
PLOT SCALE = 20.0000' / in.		CHECKED -	REVISED -
PLOT DATE = 1/28/2014 7:40:26 AM		DATE -	REVISED -

STATE OF ILLINOIS  
DEPARTMENT OF TRANSPORTATION

ALLEN ROAD IMPROVEMENTS  
CURB RAMP DETAILS - VAN WINKLE WAY

SCALE: SHEET 2 OF 3 SHEETS STA. TO STA.

F.A.U. RTE.	SECTION	COUNTY	TOTAL SHEETS	SHEET NO.
6584	105: (72-7HB)BY	PEORIA	487	373
6585				

CONTRACT NO. 68683

ILLINOIS FED. AID PROJECT