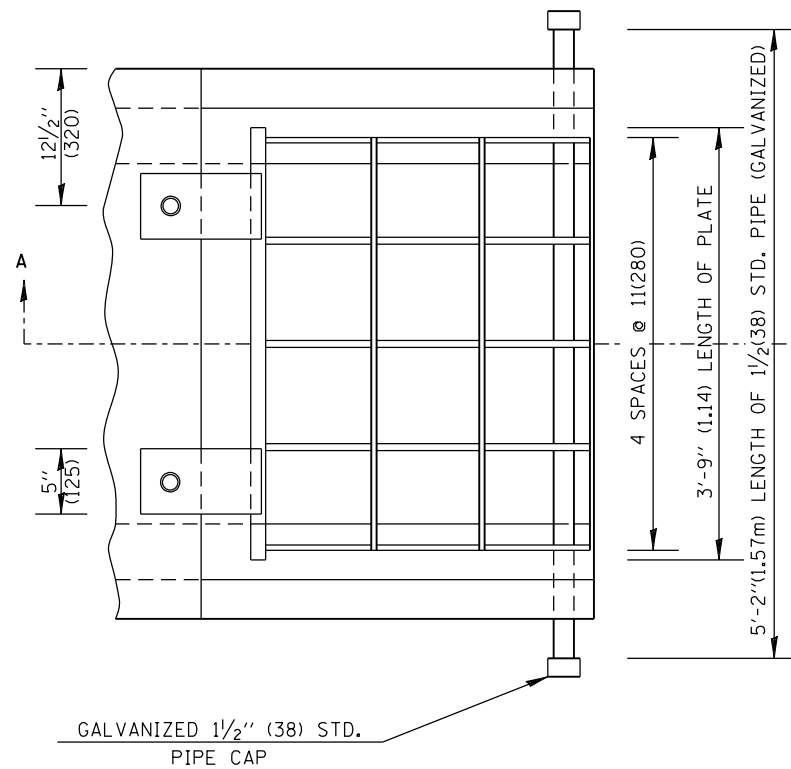


GALVANIZED 1/2" (38) STD. PIPE CAP

PLAN 36 x 36 (900 x 900)

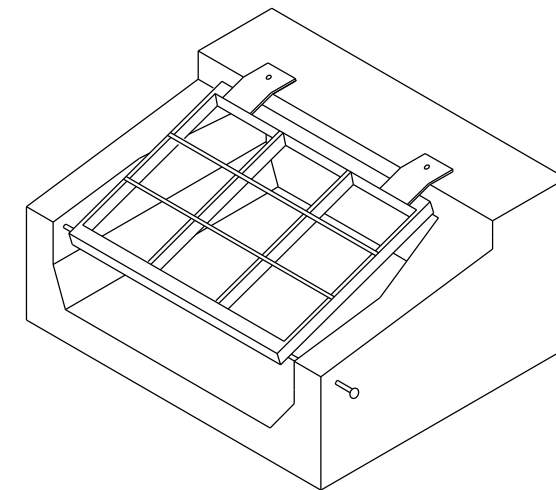


GALVANIZED 1/2" (38) STD. PIPE CAP

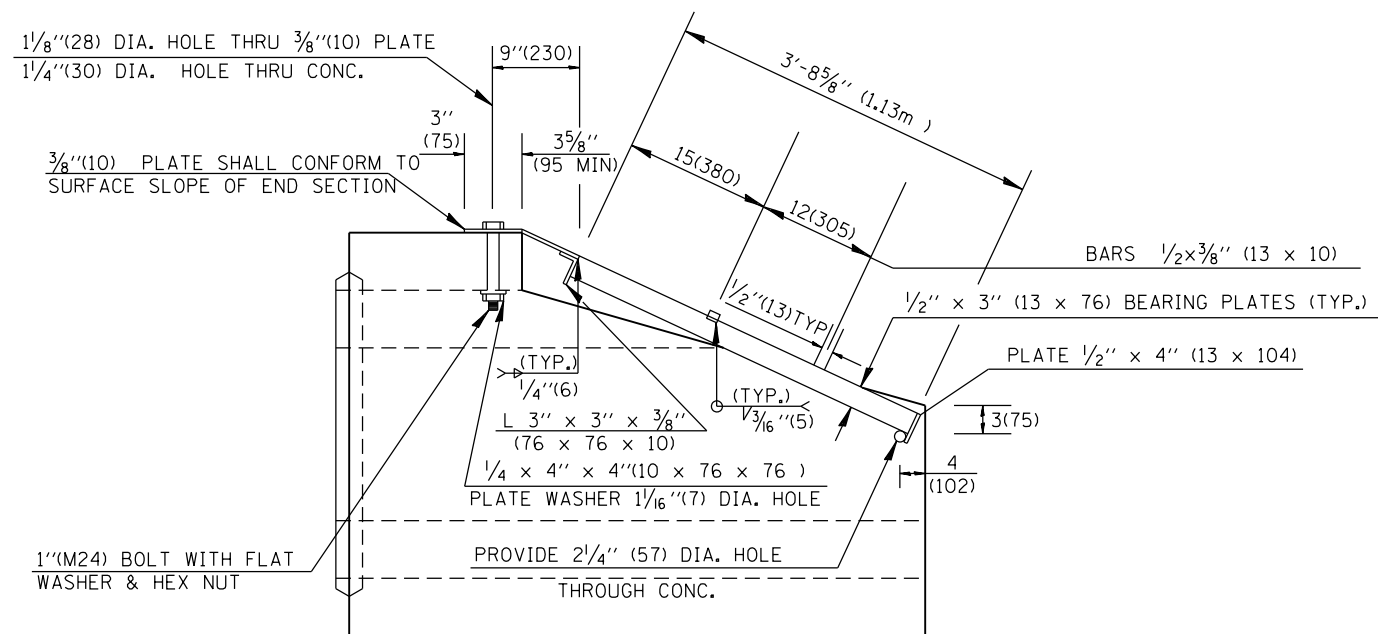
PLAN 4' x 4' (1200 x 1200)

GENERAL NOTES:

1. Grating details shown are intended for use with particular sizes of Precast Concrete Box Culvert End Sections.
2. Structural Steel Shapes and Plates shall be in accordance with Article 1006.04 of the Standard Specifications. Galvanized Steel Pipe shall be in accordance with Article 1006.27 (b) of the Standard Specifications.
3. Bolts, Nuts, and Washers shall be in accordance with Article 1006.27 (f) of the Standard Specifications. All Fabrication shall be completed and ready for assembly before galvanizing.
4. Holes in the Precast Concrete Box Culvert End Section shall be cored to the diameter noted. If cone-out on the other end of the hole occurs, the hole shall be filled with Grout to correct the diameter of the hole.



ISOMETRIC VIEW



SECTION A - A

All dimensions are in inches (millimeters) unless otherwise noted.

01-01-97	RENUM. J-12.05, METRICS, NEW REVISION BOX, REVISED	T.P.			
	TITLE BOX, ADDED DESIGNER NOTE				
10-16-06	REVISED TO 2007 SPEC.	M.A.			

STATE OF ILLINOIS  
DEPARTMENT OF TRANSPORTATION

GRATING FOR PRECAST BOX CULVERT END SECTION FOR  
36 X 36 (900 X 900) & 4' X 4' (1.2m X 1.2m) BOXES

NOT TO SCALE

CADD STD. 540301-D4

F.A. RTÉ.	SECTION	COUNTY	TOTAL SHEETS	SHEET NO.
			487	391
CONTRACT NO.				
FED. ROAD DIST. NO. ILLINOIS FED. AID PROJECT				