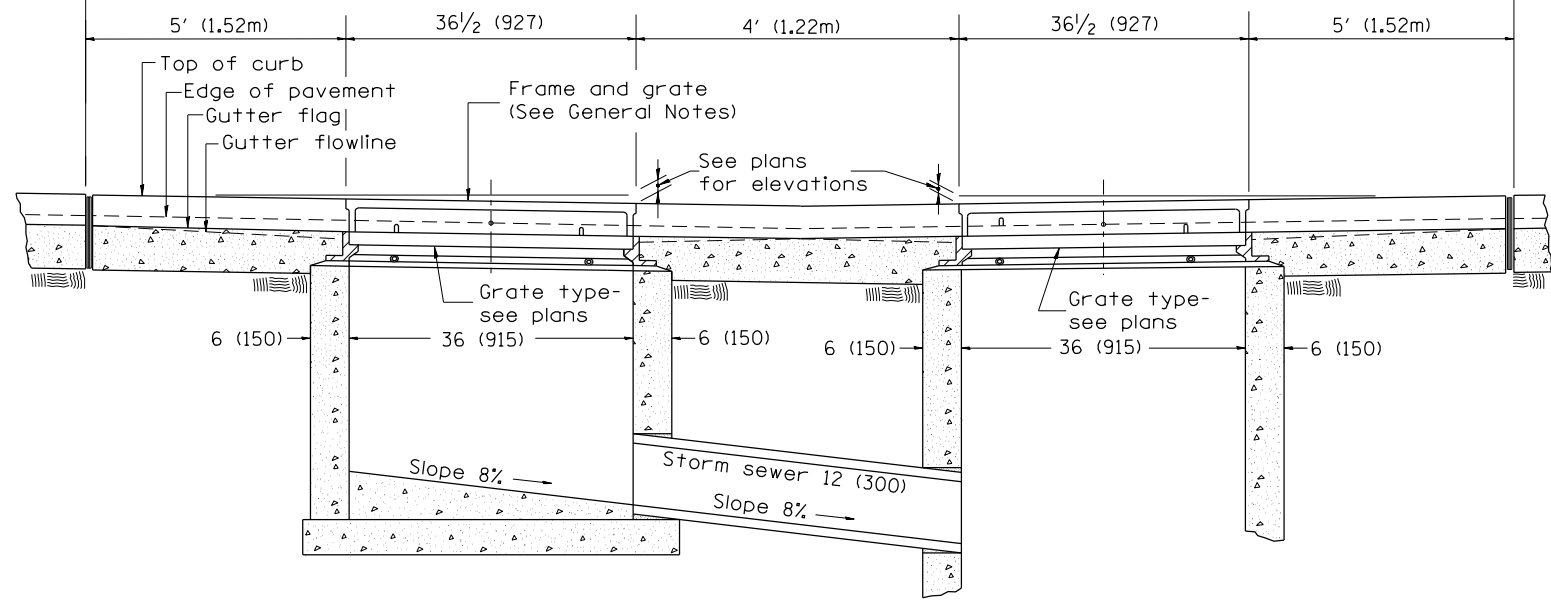
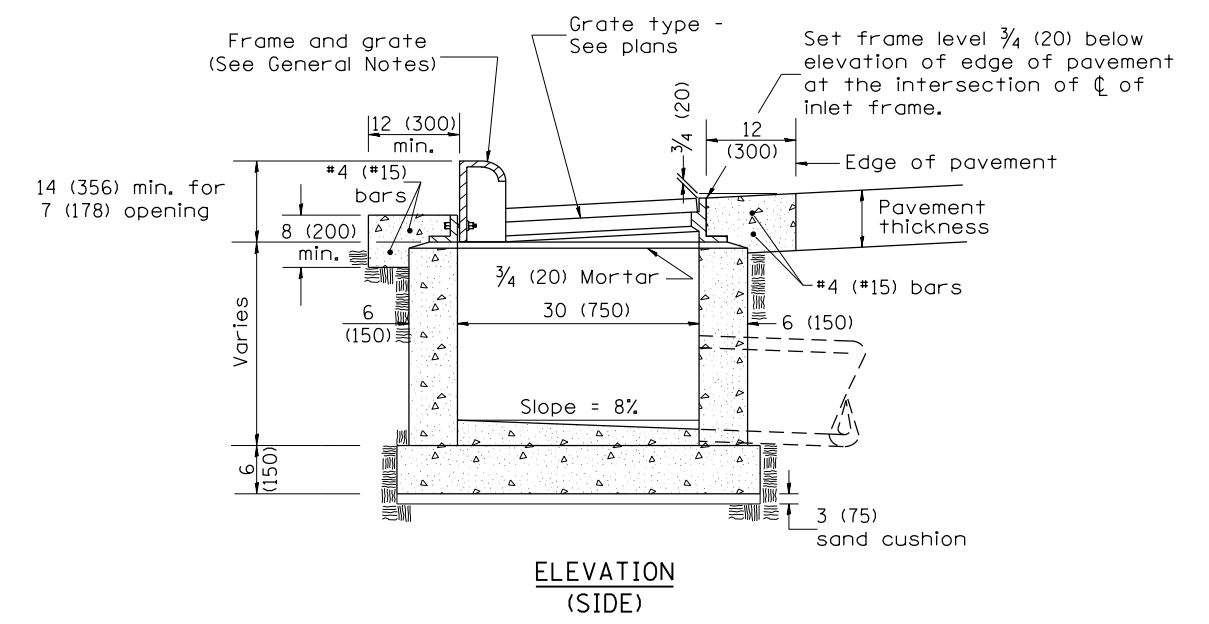


PLAN



FRONT ELEVATION



ELEVATION (SIDE)

GENERAL NOTES

1. Inlet construction shall be in accordance with Section 602 of the Standard Specifications.
2. Combination Concrete Curb & Gutter shall be constructed in accordance with Section 606 of the Standard Specifications.
3. See District CADD Standard 604001-D4 for frame and grates.

All dimensions are in inches (millimeters) unless otherwise noted.

| | | | | | | | | | | | | |
|----------|---------------------------------|------|--|--|---|---|---------------------|---|--------|--------------|-----------|-----|
| 01-01-97 | RENUM. B-4.04, NEW REVISION BOX | T.P. | | | STATE OF ILLINOIS DEPARTMENT OF TRANSPORTATION | INLETS, TYPE G-1 DOUBLE, SPECIAL | F.A. RTÉ. | SECTION | COUNTY | TOTAL SHEETS | SHEET NO. | |
| 04-01-97 | CORRECT DIMENSIONS | J.A. | | | | | | | | | 487 | 394 |
| 10-99 | REVISION TO GENERAL NOTES | J.A. | | | | | CONTRACT NO. | | | | | |
| 10-16-06 | REVISED TO 2007 SPEC. | M.A. | | | | | CADD STD. 602016-D4 | | | | | |
| | | | | | | NOT TO SCALE | | FED. ROAD DIST. NO. ILLINOIS FED. AID PROJECT | | | | |