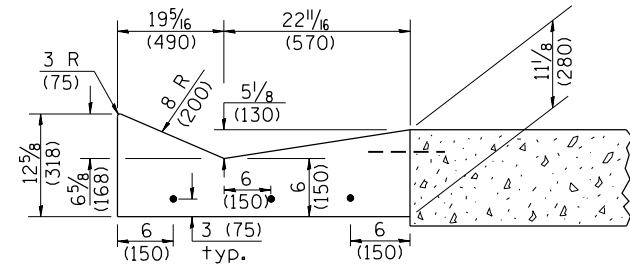
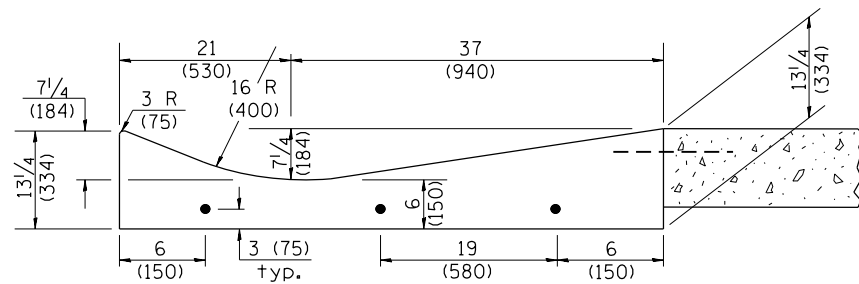


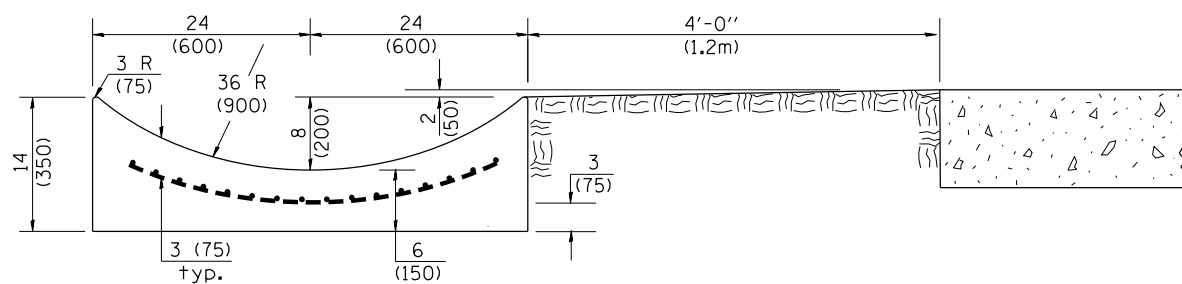
SECTION A-A



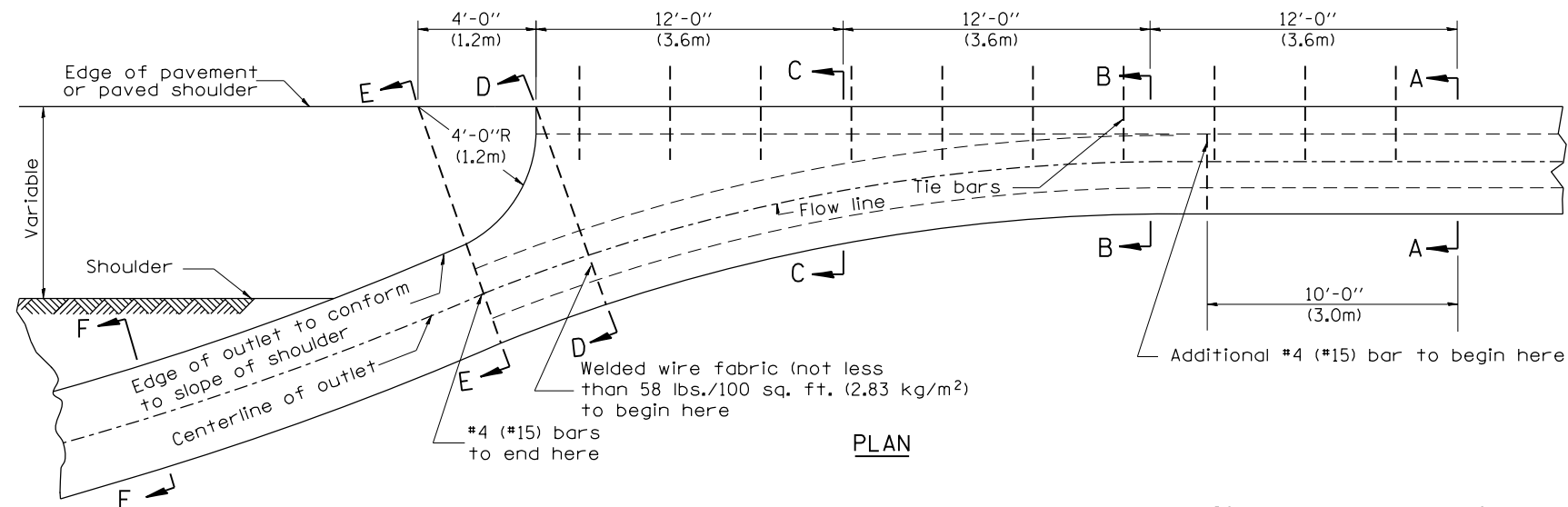
SECTION B-B



SECTION C-C



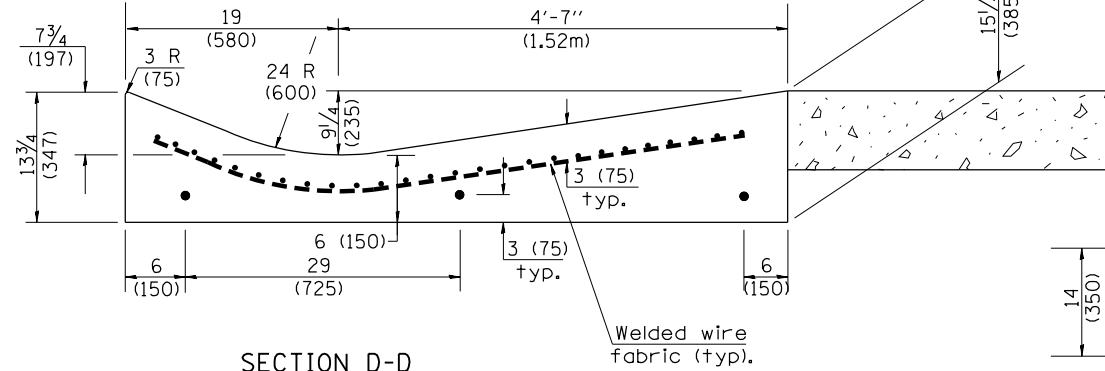
SECTION E-E



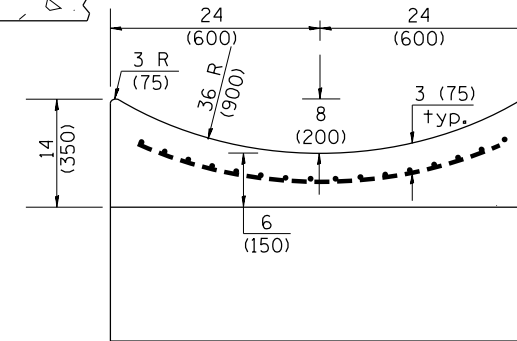
PLAN

**QUANTITY**  
 Section A-A to E-E = 4.5 cu. yd. (3.36 m<sup>3</sup>) concrete.  
 Section E-E to F-F = 0.10 cu. yd./ft. (0.26 m<sup>3</sup>/m) concrete.

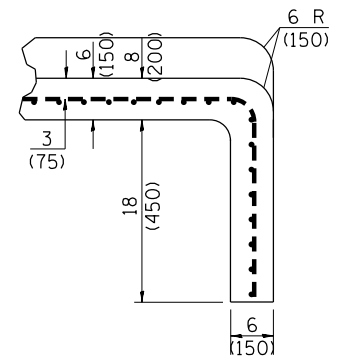
If the average grade of pavement for the distance from section A-A to section D-D exceeds 2%, this distance shall be increased 6 ft. (1.8 m) for each 1% increase in grade. A quantity adjustment is required.



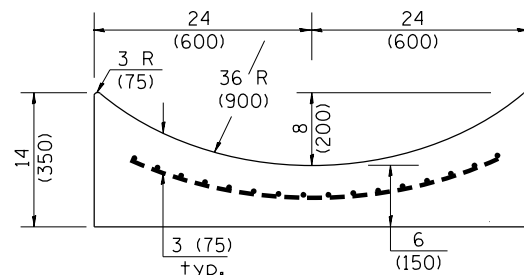
SECTION D-D



SECTION F-F



SECTIONS AT END OF OUTLET  
(CURTAIN WALL)



**QUANTITY**  
 Curtain Wall = 0.1 cu. yd. (0.08 m<sup>3</sup>) concrete.

**QUANTITIES**  
 CALC. BY: \_\_\_\_\_ DATE: \_\_\_\_\_  
 CHECKED BY: \_\_\_\_\_ DATE: \_\_\_\_\_  
 QUANTITY CALCULATIONS ARE ON FILE AT THE DISTRICT 4 OFFICE; BUREAU OF PROJECT IMPLEMENTATION; DOCUMENTATION SECTION

OUTLET

F.A. RTE.	SECTION	COUNTY	TOTAL SHEETS	SHEET NO.
			487	400
CONTRACT NO.				
FED. ROAD DIST. NO. ILLINOIS FED. AID PROJECT				