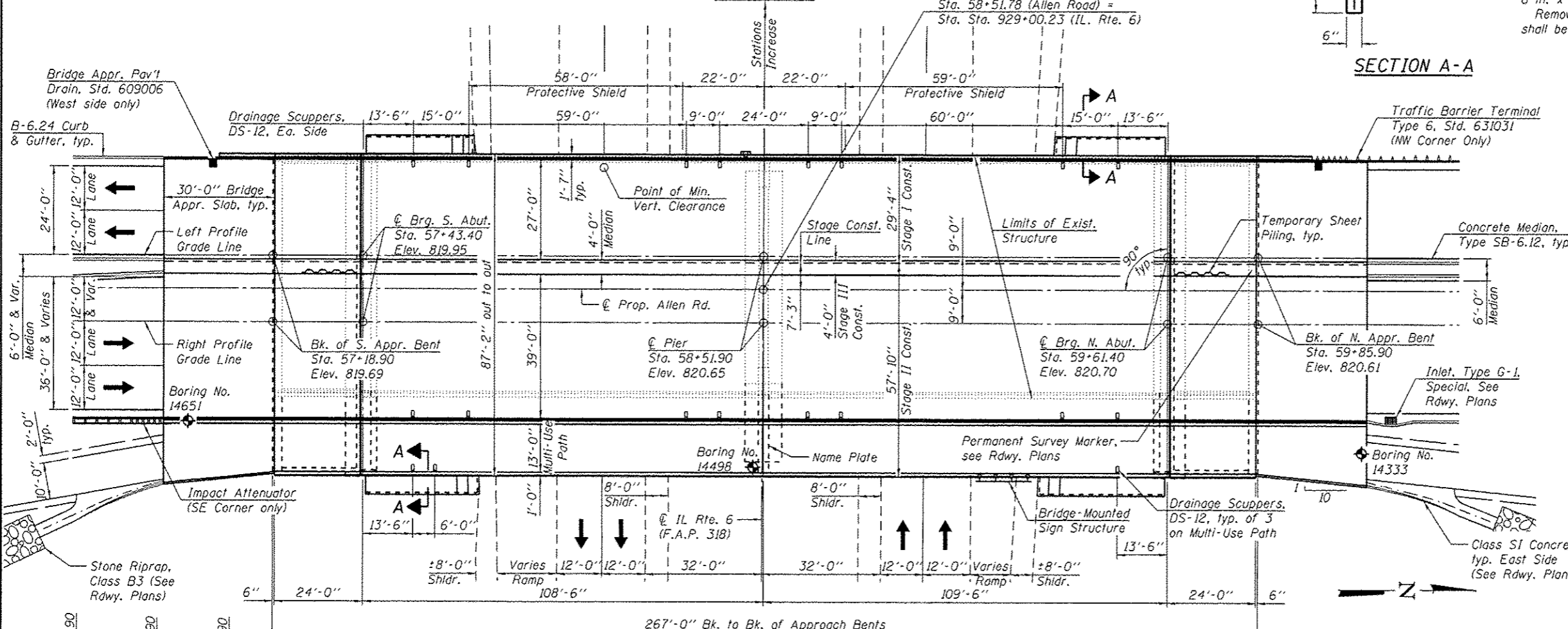
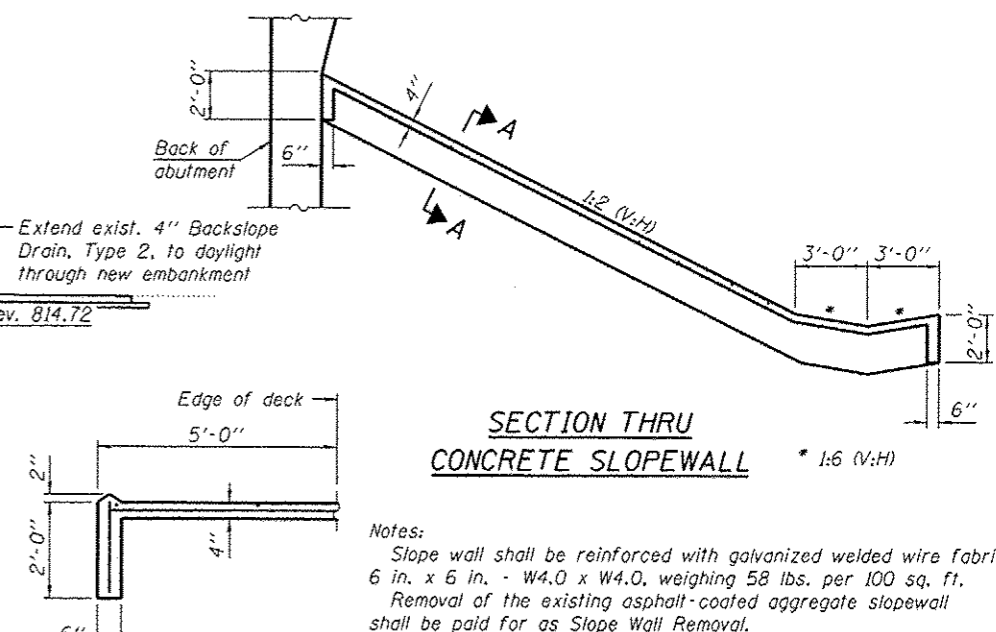
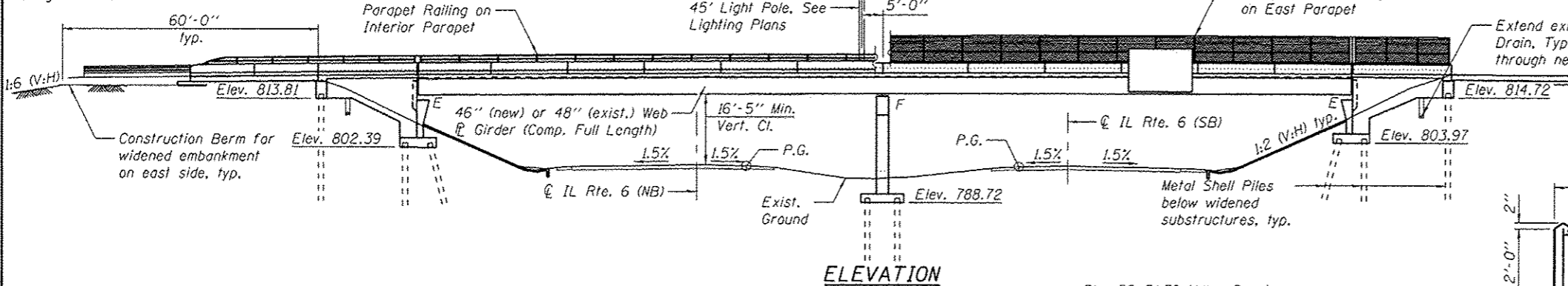


Bench Mark - Brass Disk in top of pier crash wall near east end of pier (S.N. 072-0146) Station 58+51.90, Elev. 797.07
 Existing Structure - S.N. 072-0146; Built in 1981 as F.A. 405 Section 72-7HB at Station 929+03.18. Original structure is a 2-span continuous steel 48" welded plate girder supported by vaulted abutments and a concrete pier on a spread footing. The bridge deck geometry was reconfigured in 2002 as Allen Road Improvements, Section 105-WS1. The improvement involved the removal of 5'-6" of the concrete median, placement of a 6" concrete curb and installation of a thin polymer concrete wearing surface over the northbound driving lanes and shoulder. The structure is 267'-0" bk. to bk. appr. bents and 65'-2" out to out of deck. Structure is to be widened with the removal and replacement of the concrete deck. One lane traffic in each direction is to be maintained using stage construction.

Salvage - None



LOADING HS 20-44
 Allow 50#/sq. ft. for future wearing surface.

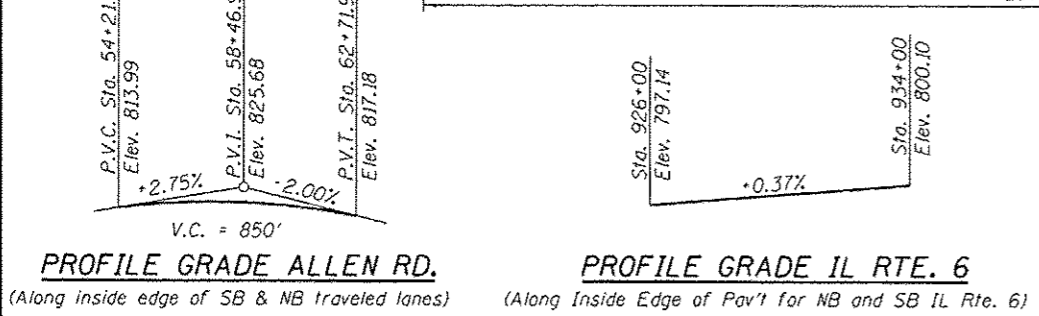
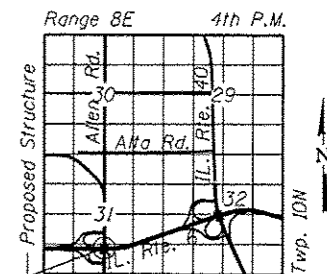
DESIGN SPECIFICATIONS
 2002 AASHTO

DESIGN STRESSES

NEW CONSTRUCTION
 $f_c = 3,500$ psi
 $f_y = 60,000$ psi (reinforcement)
 $f_y = 36,000$ psi (structural steel)

EXISTING CONSTRUCTION
 $f_c = 3,500$ psi
 $f_y = 60,000$ psi (reinforcement)
 $f_y = 36,000$ psi (structural steel)

SEISMIC DATA
 Seismic Performance Category (SPC) = A
 Bedrock Acceleration Coefficient (A) = .042g
 Site Coefficient (S) = 1.0



APPROVED
 For Structural Adequacy Only

Bryan A. Swanson
 Engineer of Bridges & Structures



STATION 929+03.18
 BUILT 201 BY
 STATE OF ILLINOIS
 F.A.P. RT. 318 SEC. (72-7HB)BY
 LOADING HS 20
 STR. NO. 072-0146

NAME PLATE
 See Std. 515001

GENERAL PLAN AND ELEVATION
ALLEN ROAD OVER IL RTE. 6
 F.A.P. RTE. 318 SEC. (72-7HB)BY
PEORIA COUNTY
 STATION 929+03.18
 STRUCTURE NO. 072-0146

FILE NAME : 0720146-68683-001-0PE.dgn	USER NAME : bswanson	DESIGNED - BAS	REVISIONS	STATE OF ILLINOIS DEPARTMENT OF TRANSPORTATION	F.A.P. RTE. 318	SECTION (72-7HB)BY	COUNTY PEORIA	TOTAL SHEETS 487	SHEET NO. 288
MAURER-STUTZ ENGINEERS SURVEYORS	PLOT SCALE :	CHECKED - JAE	REVISIONS		SHEET NO. 1 OF 36 SHEETS	[ILLINOIS] FED. AID PROJECT			
PLOT DATE : 1/24/2014		DRAWN - BAS	REVISIONS						
		CHECKED - RAL	REVISIONS						