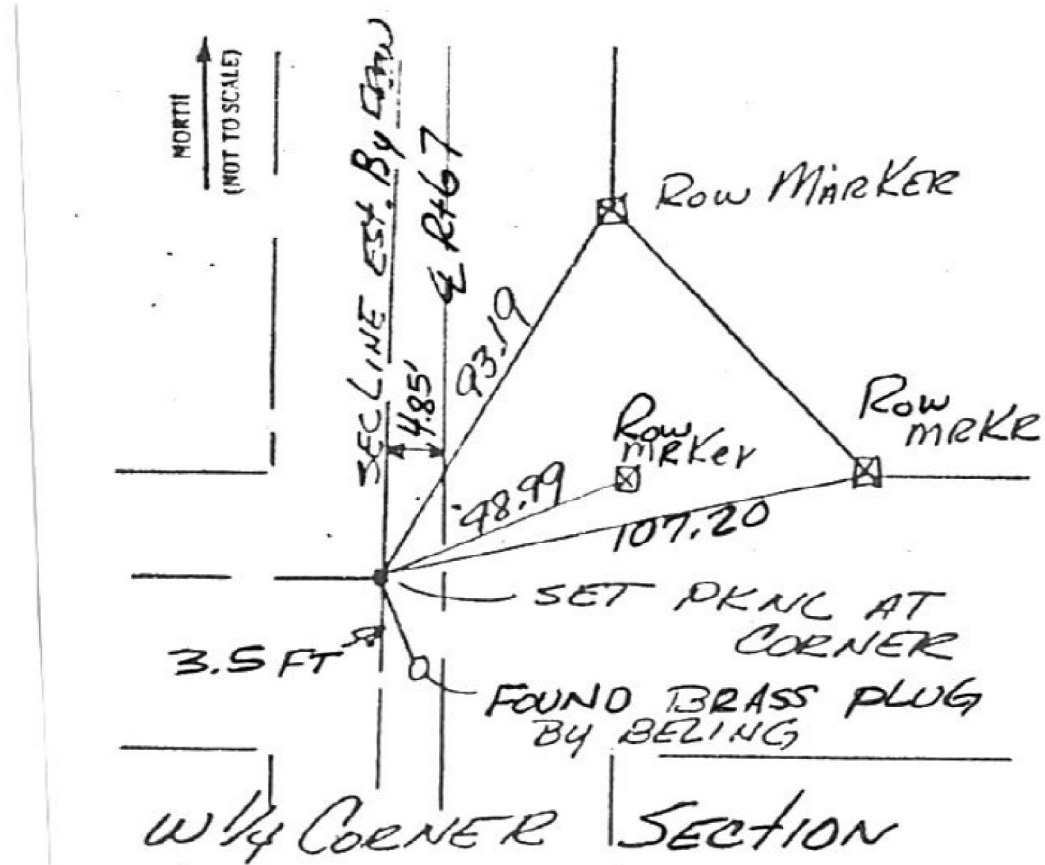


# MONUMENT RECORD

OF LAND SURVEY MONUMENTS SITUATED IN  
 SECTION 23, TOWNSHIP 15N  
 RANGE 2 West, OF THE  
4+7 PRINCIPAL MERIDIAN,  
MERCER COUNTY, ILLINOIS

MONUMENT DESCRIPTION AND REMARKS: SET PK NL @ the NW CORNER  
AND West 1/4 CORNER, SET 5/8" RODS AT  
the N 1/4 CORNER AND CENTER OF SECTION

## LOCATION 1



FILE NAME =	USER NAME = mendezp.j	DESIGNED -	REVISED -
S:\GEN\DRAWING\STD&PLNS\SQUAD11\68980\468980 Plans.dgn		DRAWN -	REVISED -
Default	PLOT SCALE = 40.0000' / in.	CHECKED -	REVISED -
	PLOT DATE = 1/29/2014	DATE -	REVISED -

STATE OF ILLINOIS  
 DEPARTMENT OF TRANSPORTATION

SECTION CORNER  
 RE-MONUMENTATION

SCALE: SHEET 1 OF 6 SHEETS STA. TO STA.

F.A.P. 310	SECTION	COUNTY	TOTAL SHEETS	SHEET NO.
US 67	(104, 105)RS-4	MERCER	32	20
CONTRACT NO. 68980			ILLINOIS FED. AID PROJECT	