

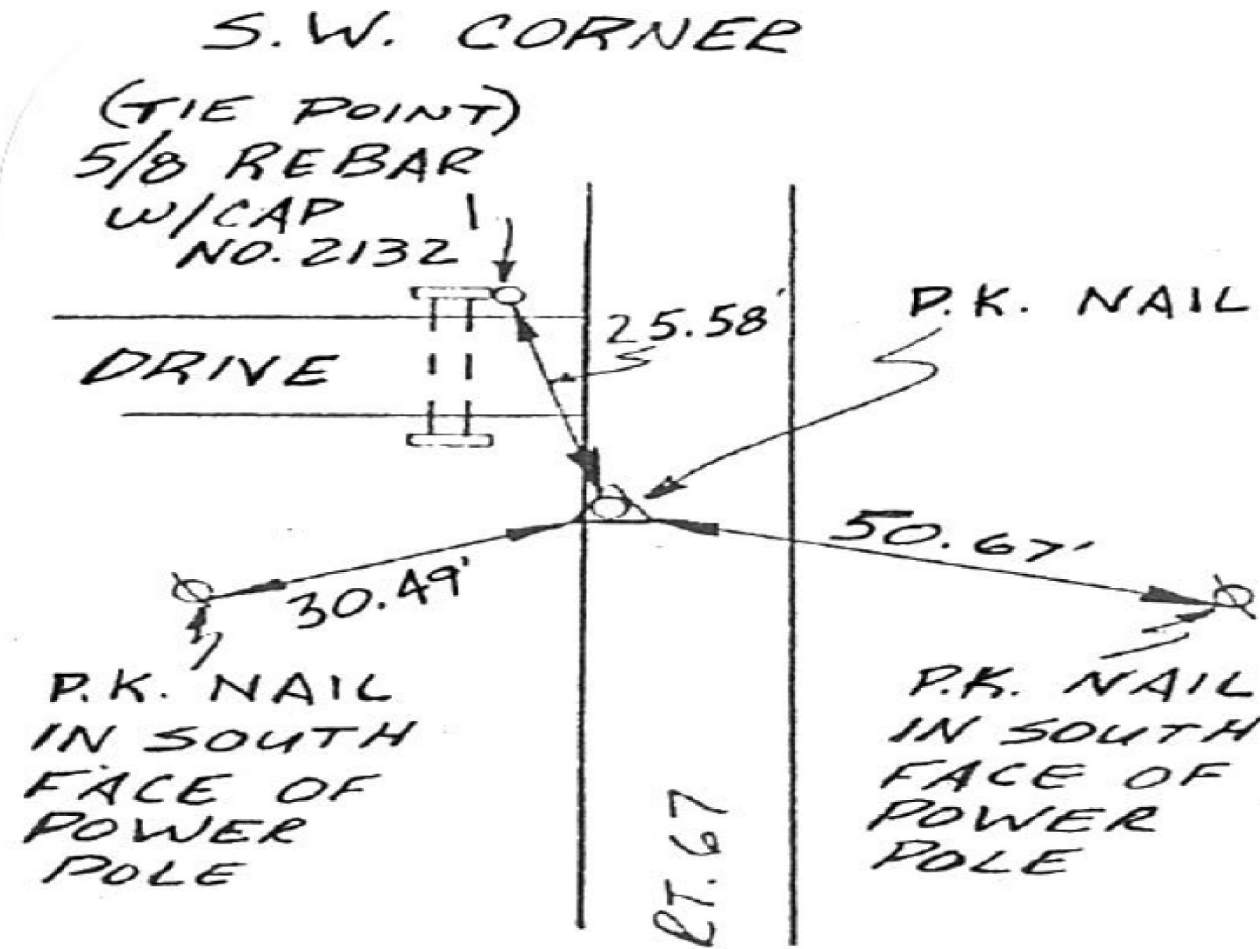
# "MONUMENT RECORD"

OF

LAND SURVEY MONUMENTS SITUATED IN SECTION 23, TOWNSHIP 15 N,  
 RANGE 2 W, OF THE 4<sup>TH</sup> PRINCIPAL MERIDIAN, MERCER,  
 COUNTY, ILLINOIS.

MONUMENT DESCRIPTION AND REMARKS: S.W. CORNER - SET  
P.K. NAIL IN ROAD 10.65' WEST OF CENTER LINE.  
E 1/4 CORNER - FOUND R.R. SPIKE 2" DEEP IN  
GRAVEL ROAD, ±3' EAST OF E OF 2700E.

## LOCATION 2



FILE NAME =	USER NAME = mendezp.j	DESIGNED -	REVISED -
S:\GEN\DRAWING\STD&PLNS\SQUAD11\68980\468980 Plans.dgn		DRAWN -	REVISED -
Default	PLOT SCALE = 40.0000' / in.	CHECKED -	REVISED -
	PLOT DATE = 1/29/2014	DATE -	REVISED -

STATE OF ILLINOIS  
 DEPARTMENT OF TRANSPORTATION

SECTION CORNER  
 RE-MONUMENTATION

SCALE: SHEET 2 OF 6 SHEETS STA. TO STA.

F.A.P. 310	SECTION	COUNTY	TOTAL SHEETS	SHEET NO.
US 67	(104, 105)RS-4	MERCER	32	21
			68980	
ILLINOIS FED. AID PROJECT				