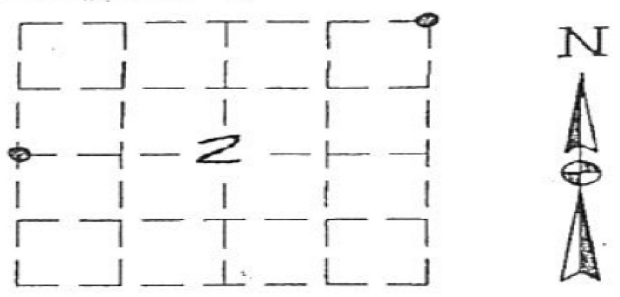
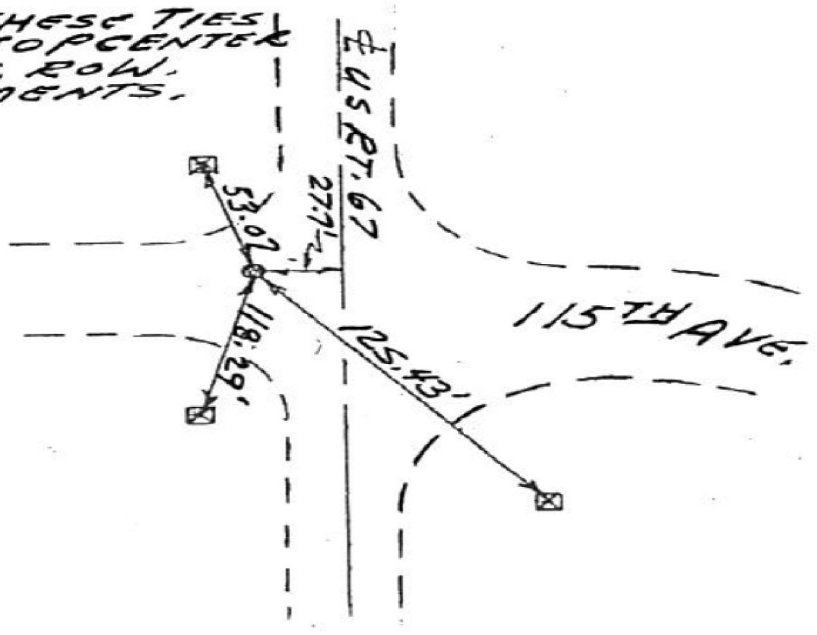


"MONUMENT RECORD"
 OF
 LAND SURVEY MONUMENTS
 SITUATED IN SECTION 2
 TOWNSHIP 14 NORTH
 RANGE 2 W , 4TH P.M.
MERCER COUNTY, IL



LOCATION 3

NOTE: THESE TIES
 ARE TO TOP CENTER
 OF CONC. ROW
 MONUMENTS.



W. 1/4 CORNER SEC. 2-14-2
 FOUND BRASS PLATE
 IN ASPHALT