

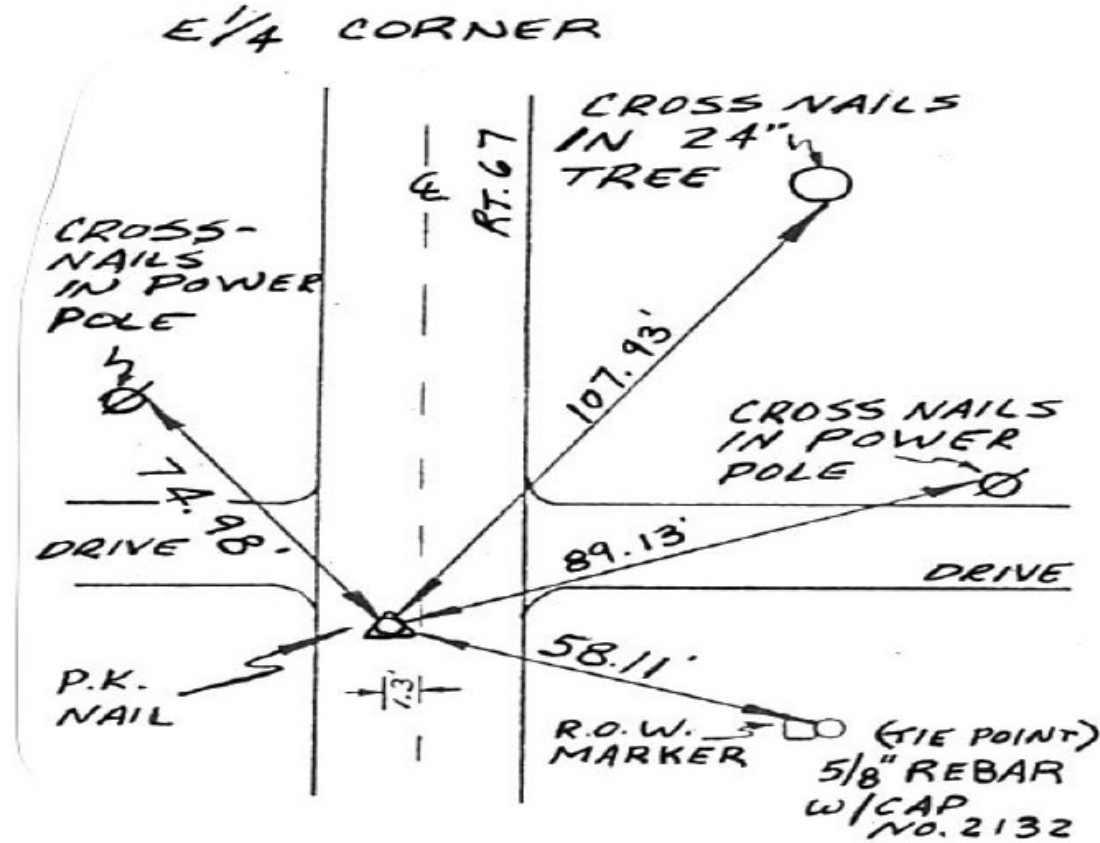
"MONUMENT RECORD"

OF

LAND SURVEY MONUMENTS SITUATED IN SECTION 10, TOWNSHIP 14N,
 RANGE 2W, OF THE 4TH PRINCIPAL MERIDIAN, MERCER,
 COUNTY, ILLINOIS.

MONUMENT DESCRIPTION AND REMARKS: AT N.E. CORNER - SET
5/8" REBAR W/CAP NO. 2132. AT E 1/4 CORNER - SET
P.K. NAIL IN ROAD (H.S. 67) 1.3' WEST OF CENTERLINE.

LOCATION 5



FILE NAME =	USER NAME = mendezpj	DESIGNED -	REVISED -
S:\GEN\DRAWING\STD&PLNS\SQUAD11\68980\468980 Plans.dgn		DRAWN -	REVISED -
Default	PLOT SCALE = 40.0000' / in.	CHECKED -	REVISED -
	PLOT DATE = 1/29/2014	DATE -	REVISED -

STATE OF ILLINOIS
 DEPARTMENT OF TRANSPORTATION

SECTION CORNER
 RE-MONUMENTATION

SCALE: SHEET 5 OF 6 SHEETS STA. TO STA.

F.A.P. 310	SECTION	COUNTY	TOTAL SHEETS	SHEET NO.
US 67	(104, 105)RS-4	MERCER	32	24
CONTRACT NO. 68980			ILLINOIS FED. AID PROJECT	