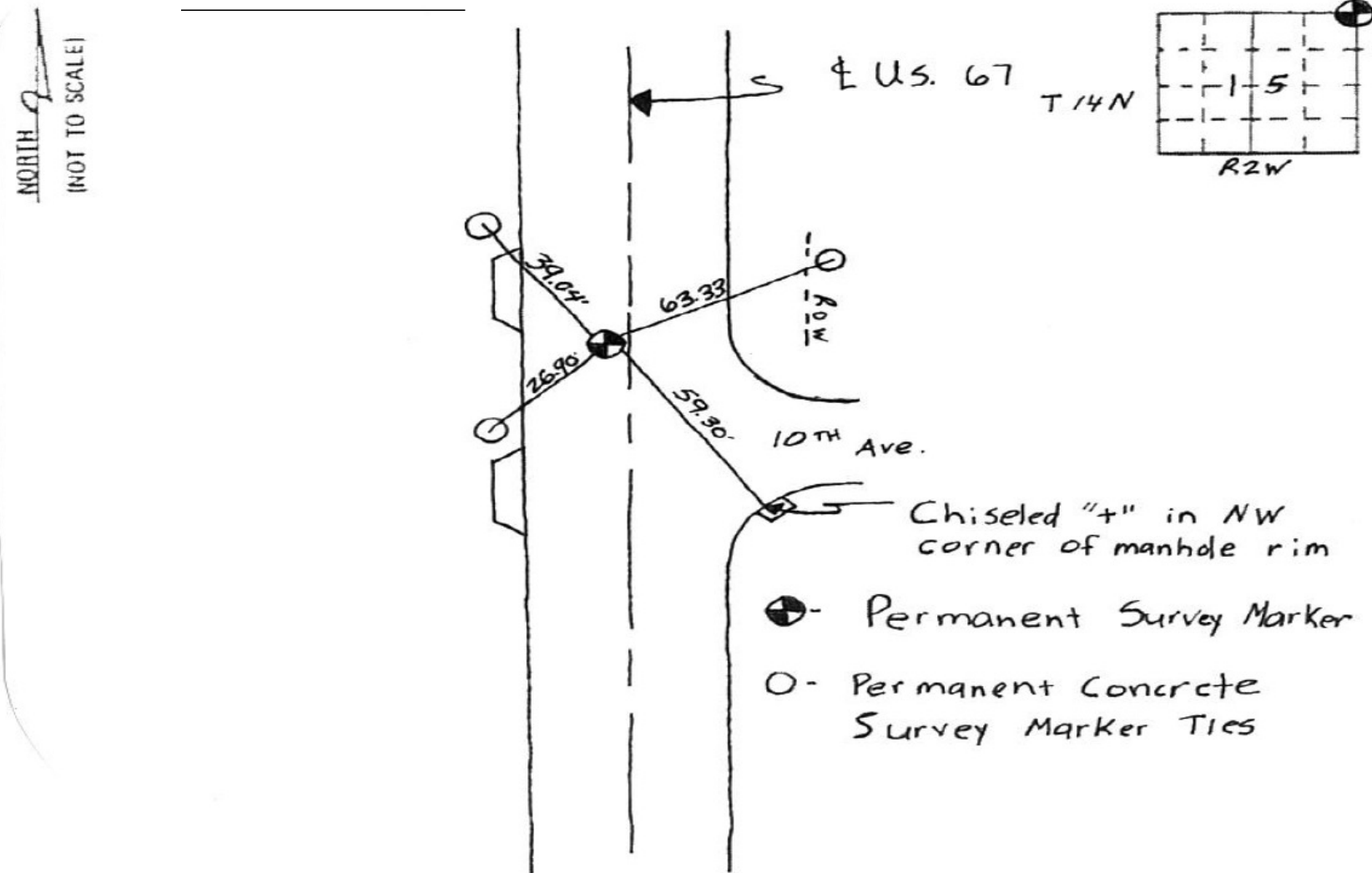


# "MONUMENT RECORD"

OF  
 LAND SURVEY MONUMENTS SITUATED IN SECTION 15, TOWNSHIP 14N,  
 RANGE 2W, OF THE 4<sup>TH</sup> PRINCIPAL MERIDIAN, Mercer  
 COUNTY, ILLINOIS.

MONUMENT DESCRIPTION AND REMARKS: Permanent Survey Marker  
BRASS DISK IN PAVEMENT 4.65' WEST OF US 67 CENTERLINE. NE CORNER  
SEC 15 T14N R2W 4<sup>TH</sup> PM.

## LOCATION 6



FILE NAME =	USER NAME = mendezpj	DESIGNED -	REVISED -
S:\GEN\DRAWING\STD&PLNS\SQUAD11\68980\468980 Plans.dgn		DRAWN -	REVISED -
Default	PLOT SCALE = 40.0000' / in.	CHECKED -	REVISED -
	PLOT DATE = 1/29/2014	DATE -	REVISED -

STATE OF ILLINOIS  
 DEPARTMENT OF TRANSPORTATION

SECTION CORNER RE-MONUMENTATION	
SCALE:	SHEET 6 OF 6 SHEETS STA. TO STA.

F.A.P. 310	SECTION	COUNTY	TOTAL SHEETS	SHEET NO.
US 67	(104, 105)RS-4	MERCER	32	25
CONTRACT NO. 68980			ILLINOIS FED. AID PROJECT	