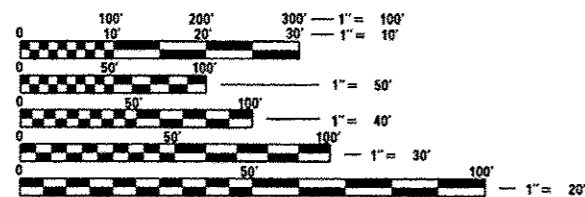


INDEX OF SHEETS 04-25-14 LETTING ITEM 037

- 1 COVER SHEET
- 2-3 GENERAL NOTES & JOB SPECIFIC NOTES
- 4-6 SUMMARY OF QUANTITIES
- 7-12 TYPICAL SECTIONS
- 13-14 SCHEDULE OF QUANTITIES
- 15-16 RESURFACING SCHEDULE
- 17 LINE DIAGRAM
- 18 RIPRAP PLACEMENT DETAIL
- 19 SIDE ROAD, ENTRANCES AND MAILBOX TURNOUTS DETAILS
- 20-25 SECTION CORNER RE-MONUMENTATION
- 26-32 DISTRICT 4 CADD STANDARDS
 - 406101-D4
 - 440001-D4
 - 667101-D4
 - 780001-D4

HIGHWAY STANDARDS

- 442201-03 701201-04 701336-06
- 701001-02 701301-04 701901-03
- 701006-05 701306-03 780001-04
- 701011-04 701311-03 781001-03



FULL SIZE PLANS HAVE BEEN PREPARED USING STANDARD ENGINEERING SCALES. REDUCED SIZED PLANS WILL NOT CONFORM TO STANDARD SCALES. IN MAKING MEASUREMENTS ON REDUCED PLANS, THE ABOVE SCALES MAY BE USED.

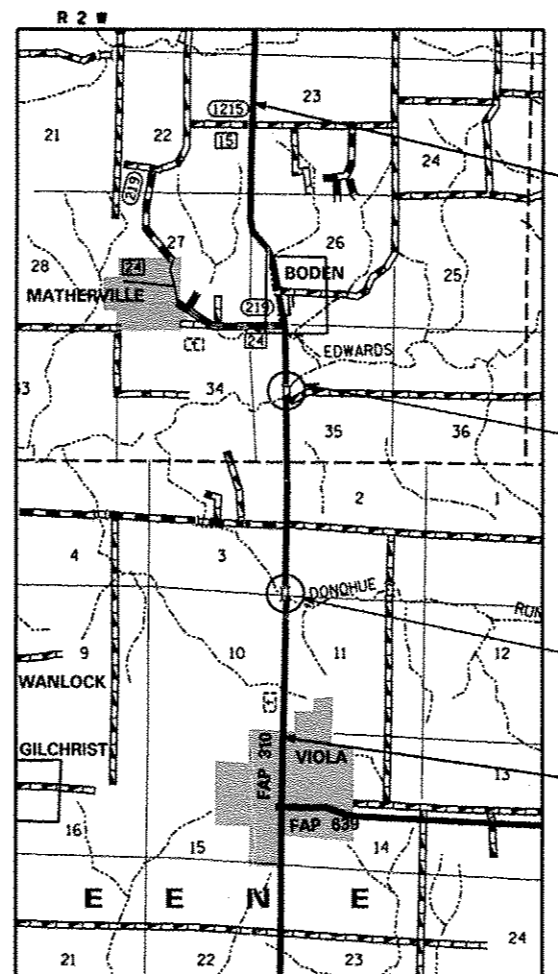
J.U.L.I.E.
JOINT UTILITY LOCATION INFORMATION FOR EXCAVATION
1-800-892-0123
OR 811

PROJECT ENGINEER: MIKE LEWIS (309)671-3454
PROJECT MANAGER: ELIAS ELDERZI (309)671-3459

CONTRACT NO. 68980
CATALOG NO. 034450-00D

STATE OF ILLINOIS
DEPARTMENT OF TRANSPORTATION
DIVISION OF HIGHWAYS
**PROPOSED
HIGHWAY PLANS**
FAP 310 ROUTE US 67
SECTION (104,105)RS-4
MERCER COUNTY

C-94-100-10
PROJECT ACNHPP-0310 (153)



ADT = 5,400
MU = 6.5%
SU = 4.2%

IMPROVEMENT BEGINS
STA. 427+58.00

BRIDGE OMISSION (SN 066-0017)
STA 533+77.34 TO STA 540+44.91

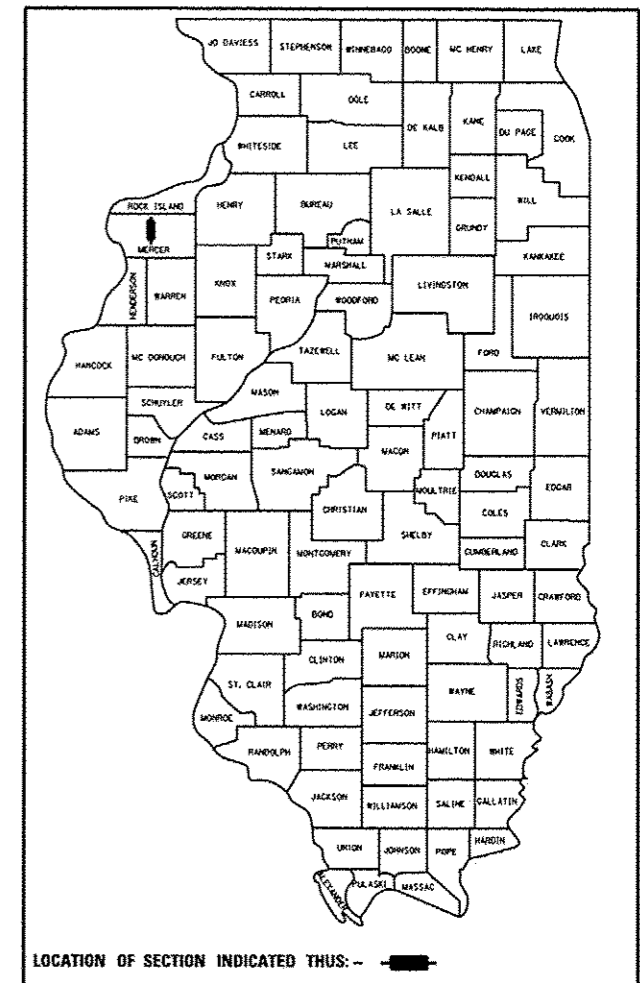
BRIDGE OMISSION (SN 066-0015)
STA 615+92.63 TO STA 617+76.13

IMPROVEMENT ENDS
STA. 669+82.10

GROSS LENGTH = 24,224.10 FT = 4.59 MI
NET LENGTH = 23,373.03 FT = 4.43 MI

F.A.P. RTE.	SECTION	COUNTY	TOTAL SHEETS	SHEET NO.
310	(104,105)RS-4	MERCER	32	1
		ILLINOIS	CONTRACT NO. 68980	

D-94-045-10



LOCATION OF SECTION INDICATED THUS: -

PROJECT DESCRIPTION:
RESURFACING ON US 67 FROM
RIDGE RD, N. OF MATHERVILLE,
TO 10TH AVE IN VIOLA

STATE OF ILLINOIS
DEPARTMENT OF TRANSPORTATION
DIVISION OF HIGHWAYS
SUBMITTED *Jan 30* 20 *14*
DEPUTY DIRECTOR OF HIGHWAYS, REGION ENGINEER
March 21 20 *14*
John D. Baranzelli, P.E.
ENGINEER OF DESIGN AND ENVIRONMENT
March 21 20 *14*
Omer Osman, P.E.
DIRECTOR OF HIGHWAYS, CHIEF ENGINEER

PRINTED BY THE AUTHORITY
OF THE STATE OF ILLINOIS

GENERAL NOTES

ENVIRONMENTAL REVIEWS

Prior to the use of any proposed borrow areas, use areas (temporary access roads, detours, run-arounds, etc.) and/or waste areas, the Contractor shall file the required environmental resource request surveys according to Section 107.22 of the Standard Specifications. These surveys are required in order for the Department to conduct cultural and biological resource surveys for the proposed site.

The required environmental resource documentation shall include the following:

- *BDE Form 2289 (Environmental Survey Request)
- *BDE Form 2290 (Waste/Use Area Review)
- *A location map showing the size limits and location of the use area
- *Color photographs depicting the use area
- *Borrow Area Entry Agreement form-D4 PI0101

Prior to any waste materials being removed from the construction site the required environmental resource surveys will need to be obtained and filed by the Contractor. Excess waste products removed from the construction site shall be disposed of as required in Section 202.03 of the Standard Specifications.

Any protruding metal bars shall be removed prior to the disposal of broken concrete at approved disposal sites.

Please note that a minimum of four weeks shall be allowed for the District to obtain the required environmental clearances and six weeks for the required borrow site environmental clearances.

POLYMERIZED BITUMINOUS MATERIALS (PRIME COAT) RATES

Surface Type	Estimated Truck Application Rate	Residual Rate
Milled (HMA or PCC)	0.10 gal/sy (0.0004 ton/sy)	0.05 gal/sy
Existing Pavement	0.05 gal/sy (0.00022 ton/sy)	0.025 gal/sy
Fog Coat (between lifts)	0.05 gal/sy (0.00022 ton/sy)	0.025 gal/sy

Note: Estimated truck application rate is used for estimating quantities.

PAVEMENT STATIONING NUMBERS & PLACEMENT

The Contractor shall provide labor and materials required to imprint pavement station numbers in the finished surface of the pavement and/or overlay. The numbers shall be approximately 3/4 inch (20mm) wide, 5 inches (125 mm) high and 5/8 inch (15 mm) deep.

The pavement station numbers shall be installed as specified herein:

Interval – 200 feet (English stationing) or 100 meters (metric stationing)

Bottom of Numbers – 6 inches (150 mm) from the inside edge of the pavement marking

Location:

- * 2,3, & 5 Lane Pavements – right edge of pavement in direction of increasing stations
- * Multi-Lane Divided Roadways – outside edge of pavement in both directions
- * Ramps – along baseline edge of pavement

Position – stations shall be placed so they can be read from the adjacent shoulder

Format – English (Metric) pavement stations shall use this format "XXX (XX + X00)" where X represents the pavement station

This work will not be paid for separately, but will be considered included in the cost of the associated pavement and/or overlay pay items.

BUTT JOINT CUTTING TIME RESTRICTION

Butt joints shall not be milled more than three (3) days prior to placement of the HMA surface course.

PAVING SURFACE COURSE

Continuous paving operations on the main roadway shall be maintained at all times during the construction of the hot-mix asphalt surface. No interruptions for side roads, entrances, turn lanes, etc. will be allowed.

FILE NAME *	USER NAME * mendozaj	DESIGNED -	REVISED -	STATE OF ILLINOIS DEPARTMENT OF TRANSPORTATION	GENERAL NOTES & JOB SPECIFIC NOTES	F.A.P. RTE.	SECTION	COUNTY	TOTAL SHEETS	SHEET NO.	
SYNEN\ORAF\STDS\PLNS\SQUAD11\08908104	0708 Plans.dgn	DRAWN -	REVISED -			310	104J05RS-4	MERCER	32	2	
Default	PLOT SCALE = 40.0000 ' / 1"	CHECKED -	REVISED -			CONTRACT NO. 68980					
	PLOT DATE = 1/30/2014	DATE -	REVISED -			ILLINOIS FED. AID PROJECT					
SCALE:						SHEET 1 OF 2 SHEETS		STA.		TO STA.	

SETTING OF SECTION CORNER MONUMENTATION

All section corner locations on this project shall be located and verified by a licensed Land Surveyor prior to any removal work being performed. The Land Surveyor shall locate the existing section corners through courthouse research, personal knowledge or through the assistance of local firms performing Land Surveying in the area. If the section corner does not exist through either its physical location or through ties in the field, it shall not be reset. There shall be no calculating of section corners onto a project required.

Once paving and striping operations have been performed, the section corner shall be reset at the direction of a licensed Land Surveyor. If any dimensions have been changed it shall be the responsibility of the surveyor to file a new monument record in the appropriate courthouse.

A copy of all drawings or monument records produced from this project shall be sent to the Chief of Surveys, Illinois Department of Transportation, Region Three/District Four, Peoria, Illinois.

The supplying, drilling, setting of disks, professional services, labor and any other additional work required to perform this work shall be paid for under the pay item for Permanent Survey Markers, Type I.

Refer to District Four CADD Standard 667101 for details.

MIXTURE REQUIREMENTS:

The following mixture requirements are applicable for this project:

Mixture Use(s):	Polymerized Surface Course and Class D Patches	HMA Shoulder (Surface Lift)	Incidental Surface Course
AC/PG:	SBS or SBR 76-22	PG 64-22	PG 64-22
RAP% (Max): **	10%	30%	15%
Design Air Voids:	4.0% @ N=50	3.0% @ N=50	4.0% @ N=50
Mixture Composition: (Gradation Mixture)	IL 9.5 or IL12.5	IL 9.5	IL 9.5 or IL12.5
Friction Aggregate:	Mixture D (Dolomite only)	Mixture C	Mixture C

NOTES:

- Individual lift thickness of each mix type will be no less than 3 times nominal maximum aggregate size and no more than 6 times nominal maximum aggregate size.
- For IL 12.5 mixes, CA14 will be allowed in conjunction with CA16.

NO PASSING ZONE VERIFICATION

The resident shall contact Operations to verify the location of no passing zones prior to placement of centerline striping.

CROSSING EXISTING STRUCTURES WITH EQUIPMENT

The following structures SN 066-0017, SN 066-0015 may be crossed with b or c from below.

Options:

- loaded MTD
- unloaded MTD
- milling machine

Any structures not listed above shall be verified by the resident prior to beginning work.

ENGINEERS FIELD OFFICE

Add the following sentence to the end of paragraph 670.02 (i) and 670.04 (e): All of the telephone lines provided shall have unpublished numbers.

SIGNING

Sign locations may vary from the stations shown on the plans in accordance with directions from the Engineer at the time of construction. Sign locations may be adjusted in the field to avoid any found utilities.

All wood post locations shall be verified with the Bureau of Operations, Traffic Section, before installation

JOB SPECIFIC NOTES

Areas disturbed by the contractor during hauling and placing Stone Riprap shall be reshaped to original condition and seeded. All cost including seeding, fertilizing and mulching shall be considered included in the cost of Stone Dumped Riprap, Class A5.

FILE NAME *	USER NAME = mendezej	DESIGNED -	REVISED -	STATE OF ILLINOIS DEPARTMENT OF TRANSPORTATION	GENERAL NOTES & JOB SPECIFIC NOTES	F.A.P. RTE.	SECTION	COUNTY	TOTAL SHEETS	SHEET NO.	
S:\GEN\DRIFT\ST06\PLNS\SQUAD11\68980\04	9788 Plans.dgn	DRAWN -	REVISED -			310	(104,105)RS-4	MERCER	32	3	
Default	PLOT SCALE = 48,0000 ' / in.	CHECKED -	REVISED -			CONTRACT NO. 68980		ILLINOIS FED. AID PROJECT			
	PLOT DATE = 1/30/2014	DATE -	REVISED -			SCALE: SHEET 2 OF 2 SHEETS STA. TO STA.					

CODE NO.	ITEM	UNIT	TOTAL QUANTITY	80% FED 20% STATE	CONSTRUCTION CODE
				0005	
28100809	STONE DUMPED RIPRAP, CLASS A5	TON	280	280	
40600215	POLYMERIZED BITUMINOUS MATERIALS (PRIME COAT)	TON	39.23	39.23	
40600895	CONSTRUCTING TEST STRIP	EACH	1	1	
40600982	HOT - MIX ASPHALT SURFACE REMOVAL - BUTT JOINT	SO YD	766	766	
40600990	TEMPORARY RAMP	SO YD	209	209	
40603310	HOT - MIX ASPHALT SURFACE COURSE, MIX "C", N50	TON	2889	2889	
40603535	POLYMERIZED HOT - MIX ASPHALT SURFACE COURSE, MIX "D", N50	TON	8038	8038	
40800050	INCIDENTAL HOT - MIX ASPHALT SURFACING	TON	282	282	
44000152	HOT - MIX ASPHALT SURFACE REMOVAL, 3/4"	SO YD	90274	90274	
44201815	CLASS D PATCHES, TYPE II, 14 INCH	SO YD	104	104	
44201821	CLASS D PATCHES, TYPE IV, 14 INCH	SO YD	40	40	
48102100	AGGREGATE WEDGE SHOULDERS, TYPE B	TON	1775	1775	
66700205	PERMANENT SURVEY MARKERS, TYPE I	EACH	6	6	
67000400	ENGINEER'S FIELD OFFICE, TYPE A	CAL MO	3	3	

CODE NO.	ITEM	UNIT	TOTAL QUANTITY	CONSTRUCTION CODE	
				0005	
67100100	MOBILIZATION	L SUM	1	1	
70100450	TRAFFIC CONTROL AND PROTECTION, STANDARD 701201	L SUM	1	1	
70100460	TRAFFIC CONTROL AND PROTECTION, STANDARD 701306	L SUM	1	1	
70100600	TRAFFIC CONTROL AND PROTECTION, STANDARD 701336	L SUM	1	1	
70300100	SHORT-TERM PAVEMENT MARKING	FOOT	9567	9567	
70300210	TEMPORARY PAVEMENT MARKING - LETTERS AND SYMBOLS	SO FT	62.40	62.40	
70300220	TEMPORARY PAVEMENT MARKING - LINE 4"	FOOT	79318	79318	
70300250	TEMPORARY PAVEMENT MARKING - LINE 8"	FOOT	4601	4601	
70300260	TEMPORARY PAVEMENT MARKING - LINE 12"	FOOT	497	497	
70300280	TEMPORARY PAVEMENT MARKING - LINE 24"	FOOT	30	30	
70301000	WORK ZONE PAVEMENT MARKING REMOVAL	SO FT	1063	1063	
* 78009000	MODIFIED URETHANE PAVEMENT MARKING - LETTERS AND SYMBOLS	SO FT	62.4	62.4	
* 78009004	MODIFIED URETHANE PAVEMENT MARKING - LINE 4"	FOOT	79318	79318	
* 78009008	MODIFIED URETHANE PAVEMENT MARKING - LINE 8"	FOOT	4601	4601	

80% FED
20% STATE

* SPECIALTY ITEM

FILE NAME * S:\GEN\DRAW\ST06\PLNS\SQUAD11\68980.dwg	USER NAME * mendezj	DESIGNED -	REVISD -	STATE OF ILLINOIS DEPARTMENT OF TRANSPORTATION	SUMMARY OF QUANTITIES	F.A.P. RTE. 310	SECTION 1104.105RS-4	COUNTY MERCER	TOTAL SHEETS 32	SHEET NO. 5	
PLOT SCALE * 1/8" = 1'-0"	PLOT DATE * 1/30/2014	DRAWN -	REVISD -			CONTRACT NO. 68980					
		CHECKED -	REVISD -			ILLINOIS FED. AID PROJECT					
		DATE -	REVISD -								

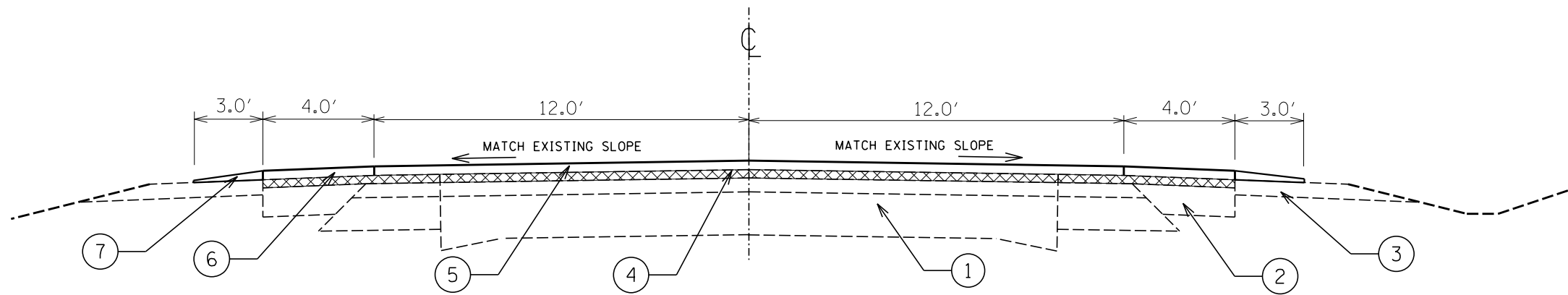
80% FED
20% STATE

CONSTRUCTION CODE

CODE NO.	ITEM	UNIT	TOTAL QUANTITY	CONSTRUCTION CODE	
					0005
* 78009012	MODIFIED URETHANE PAVEMENT MARKING - LINE 12"	FOOT	497	497	
* 78009024	MODIFIED URETHANE PAVEMENT MARKING - LINE 24"	FOOT	30	30	
* 78100100	RAISED REFLECTIVE PAVEMENT MARKER	EACH	422	422	
78300200	RAISED REFLECTIVE PAVEMENT MARKER REMOVAL	EACH	422	422	
X4401198	HOT-MIX ASPHALT SURFACE REMOVAL, VARIABLE DEPTH	SQ YD	7776	7776	
X6670109	PERMANENT SURVEY TIES	EACH	20	20	
XZ013798	CONSTRUCTION STATION LAYOUT	L SUM	1	1	
Z0034105	MATERIAL TRANSFER DEVICE	TON	8038	8038	

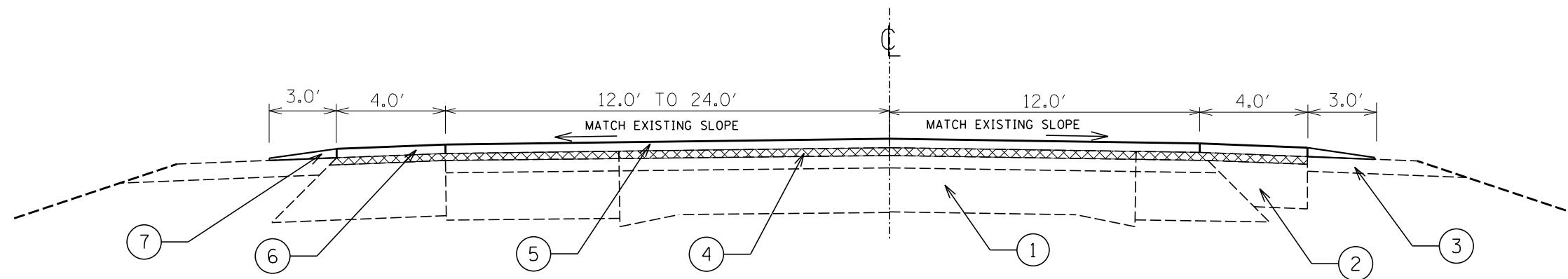
* SPECIALTY ITEM

FILE NAME * S:\GEN\DRFT\ST06\PLN\SQUAD\116898\104	USER NAME * mendoza 8989 Plans.dgn	DESIGNED -	REVISED -	STATE OF ILLINOIS DEPARTMENT OF TRANSPORTATION	SUMMARY OF QUANTITIES	F.A.P RTE. 310	SECTION 1104.105/RS-4	COUNTY MERCER	TOTAL SHEETS 32	SHEET NO. 6
PLOT SCALE = 48.0000' / 1".	PLOT DATE = 1/30/2014	DRAWN -	REVISED -			CONTRACT NO. 68980				
		CHECKED -	REVISED -			ILLINOIS FED. AID PROJECT				
		DATE -	REVISED -							



LT & RT STA 427+58.00 TO 433+05.16
 LT STA 481+11.59 TO 483+57.65
 LT & RT STA 496+89.67 TO 504+90.20
 LT & RT STA 520+65.00 TO 531+73.93
 LT & RT STA 542+35.10 TO 613+94.33
 LT STA 613+94.33 TO 615+18.68

LT & RT STA 626+88.36 TO 641+68.02
 LT STA 641+68.02 TO 642+04.11
 LT & RT STA 646+79.83 TO 654+50.83
 RT STA 654+50.83 TO 655+16.44
 LT STA 659+75.76 TO 660+24.98
 LT & RT STA 660+24.98 TO 662+87.44



LT & RT STA 433+05.16 TO 458+84.42
 LT STA 458+84.42 TO 461+85.08
 LT STA 479+27.86 TO 479+77.07

- ① EXIST. PCC PAVEMENT W/OVERLAY
- ② EXIST. HMA SHOULDERS
- ③ EXIST. AGGREGATE SHOULDERS
- ④ PROP. HMA SURFACE REMOVAL 3/4"
- ⑤ PROP. POLY. HMA SURFACE CSE. MIX "D" N50 2"
- ⑥ PROP. HMA SURFACE CSE. MIX "C" N50 2"
- ⑦ PROP. AGGREGATE WEDGE SHOULDERS, TYPE B
- ⑧ PROP. HMA SURFACE REMOVAL (VARIABLE DEPTH)

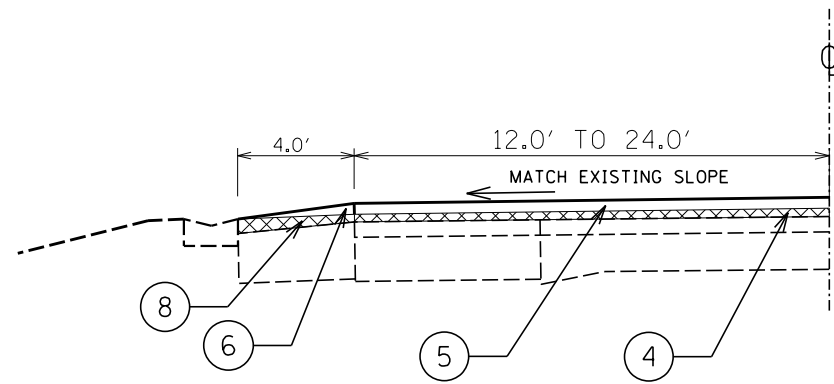
FILE NAME =	USER NAME = mendezp.j	DESIGNED -	REVISED -
S:\GEN\DRAW\STD&PLNS\SQUAD11\68980\468980 Plans.dgn		DRAWN -	REVISED -
Default	PLOT SCALE = 40.0000' / in.	CHECKED -	REVISED -
	PLOT DATE = 1/30/2014	DATE -	REVISED -

STATE OF ILLINOIS
 DEPARTMENT OF TRANSPORTATION

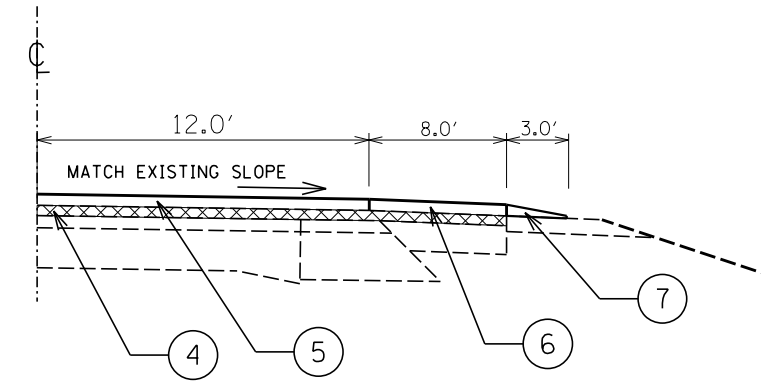
TYPICAL SECTIONS

SCALE: SHEET 1 OF 6 SHEETS STA. TO STA.

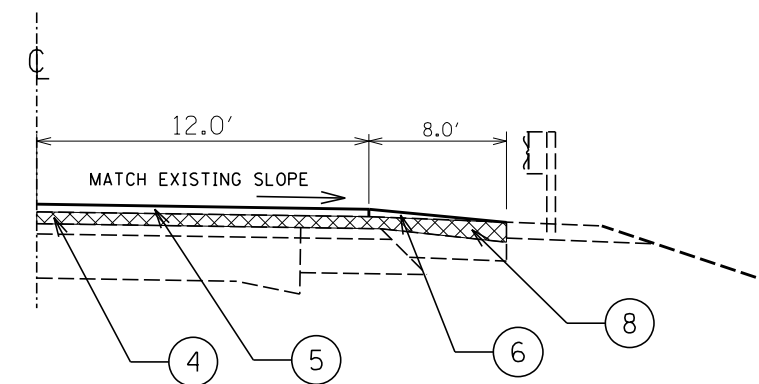
F.A.P. RTE.	SECTION	COUNTY	TOTAL SHEETS	SHEET NO.
310	(104,105)RS-4	MERCER	32	7
CONTRACT NO. 68980				
ILLINOIS FED. AID PROJECT				



LT STA 461+85.08 to 479+27.86
(SEE DETAIL A ON SHEET 9)



RT STA 458+84.42 to 459+08.42
RT STA 473+47.51 to 476+85.08
RT STA 481+11.59 to 483+57.65
RT STA 487+95.81 to 490+92.56



RT STA 459+08.42 to 473+47.51
(SEE DETAIL B ON SHEET 10)

- ① EXIST. PCC PAVEMENT W/OVERLAY
- ② EXIST. HMA SHOULDERS
- ③ EXIST. AGGREGATE SHOULDERS
- ④ PROP. HMA SURFACE REMOVAL 3/4"
- ⑤ PROP. POLY. HMA SURFACE CSE. MIX "D" N50 2"
- ⑥ PROP. HMA SURFACE CSE. MIX "C" N50 2"
- ⑦ PROP. AGGREGATE WEDGE SHOULDERS, TYPE B
- ⑧ PROP. HMA SURFACE REMOVAL (VARIABLE DEPTH)

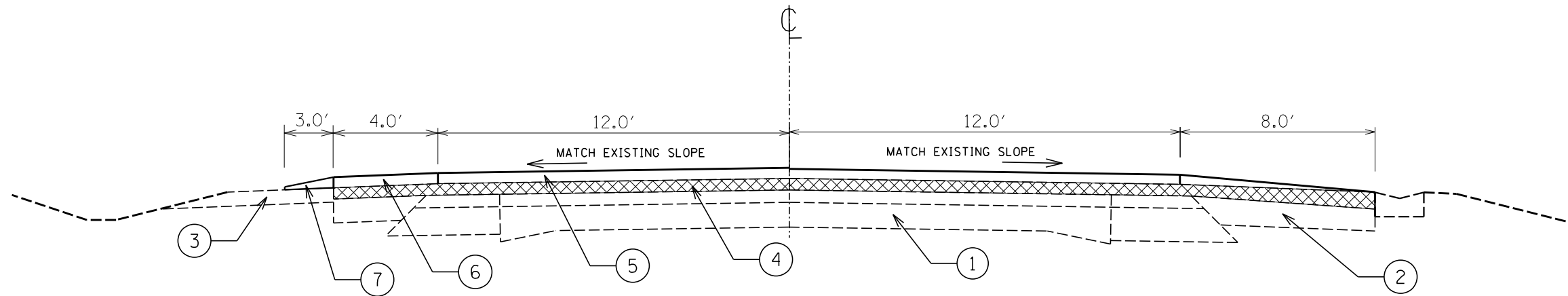
FILE NAME =	USER NAME = mendezpj	DESIGNED -	REVISED -
S:\GEN\DRAW\STD&PLNS\SQUAD11\68980\468980 Plans.dgn		DRAWN -	REVISED -
Default	PLOT SCALE = 40.0000' / in.	CHECKED -	REVISED -
	PLOT DATE = 1/30/2014	DATE -	REVISED -

**STATE OF ILLINOIS
DEPARTMENT OF TRANSPORTATION**

TYPICAL SECTIONS

SCALE: SHEET 2 OF 6 SHEETS STA. TO STA.

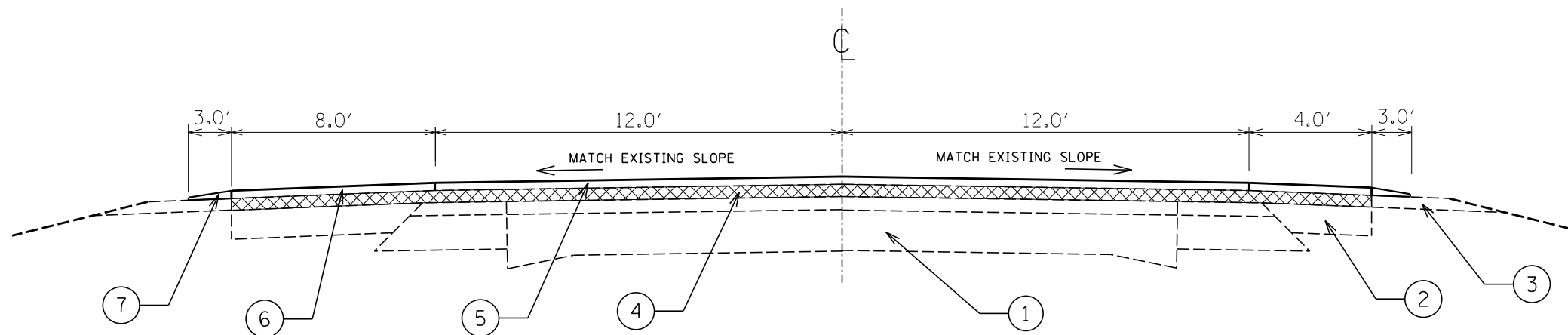
F.A.P. RTE.	SECTION	COUNTY	TOTAL SHEETS	SHEET NO.
310	(104,105)RS-4	MERCER	32	8
CONTRACT NO. 68980				
ILLINOIS FED. AID PROJECT				



RT STA 476+85.08 to 479+77.07
 LT & RT STA 479+77.07 to 481+11.59
 LT & RT STA 483+57.65 to 485+60.08

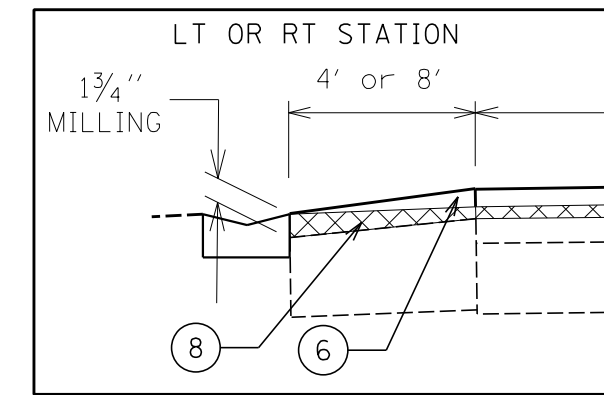
RT STA 485+60.08 to 487+95.81
 RT STA 619+20.81 to 619+71.50
 LT & RT STA 619+71.50 to 626+88.36

(SEE DETAIL A BELOW)

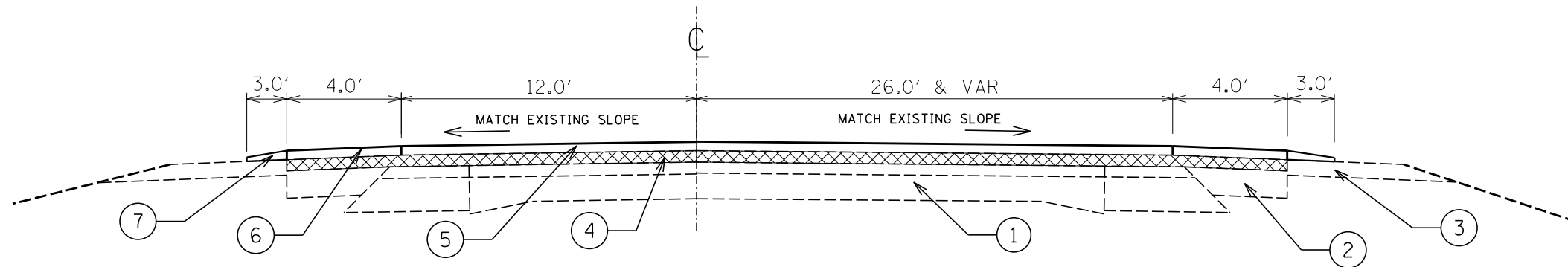


LT STA 485+60.08 to 490+92.56
 LT & RT STA 490+92.56 to 496+89.67

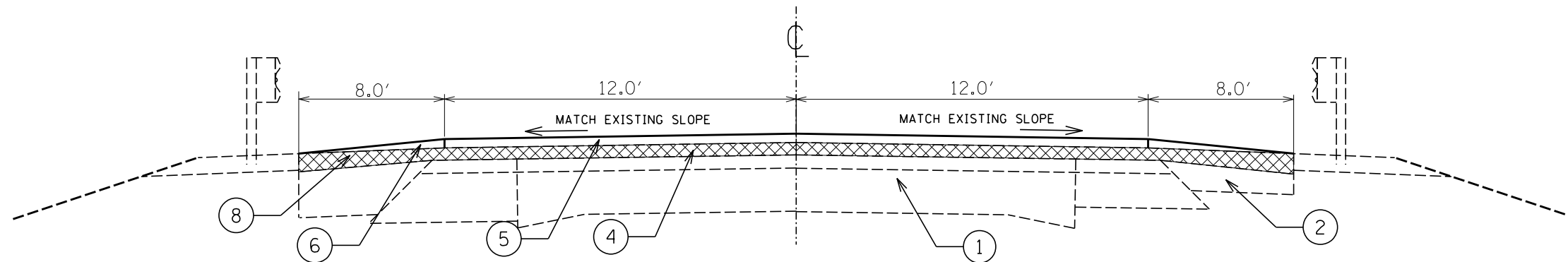
- ① EXIST. PCC PAVEMENT W/OVERLAY
- ② EXIST. HMA SHOULDERS
- ③ EXIST. AGGREGATE SHOULDERS
- ④ PROP. HMA SURFACE REMOVAL 3/4"
- ⑤ PROP. POLY. HMA SURFACE CSE. MIX "D" N50 2"
- ⑥ PROP. HMA SURFACE CSE. MIX "C" N50 2"
- ⑦ PROP. AGGREGATE WEDGE SHOULDERS, TYPE B
- ⑧ PROP. HMA SURFACE REMOVAL (VARIABLE DEPTH)



DETAIL A



LT & RT STA 504+90.20 to 520+65.00



LT & RT STA 532+06.73 to 533+77.34

LT & RT STA 540+44.91 to 541+98.10

RT STA 614+36.98 to 615+92.63

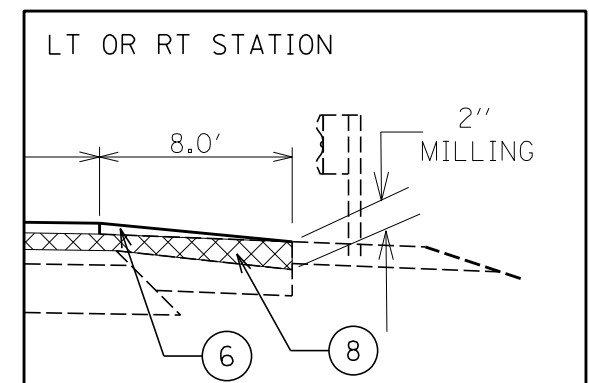
LT STA 615+61.33 to 615+92.63

RT STA 617+76.13 to 618+06.78

LT STA 617+76.13 to 619+31.77

(SEE DETAIL B BELOW)

- ① EXIST. PCC PAVEMENT W/OVERLAY
- ② EXIST. HMA SHOULDERS
- ③ EXIST. AGGREGATE SHOULDERS
- ④ PROP. HMA SURFACE REMOVAL 3/4"
- ⑤ PROP. POLY. HMA SURFACE CSE. MIX "D" N50 2"
- ⑥ PROP. HMA SURFACE CSE. MIX "C" N50 2"
- ⑦ PROP. AGGREGATE WEDGE SHOULDERS, TYPE B
- ⑧ PROP. HMA SURFACE REMOVAL (VARIABLE DEPTH)



DETAIL B

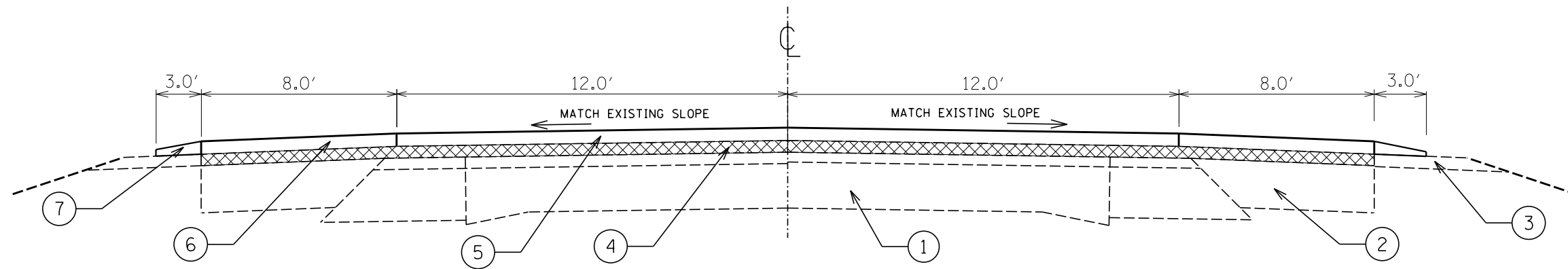
FILE NAME =	USER NAME = mendezp.j	DESIGNED -	REVISED -
S:\GEN\DRAW\STD&PLNS\SQUAD11\68980\468980 Plans.dgn		DRAWN -	REVISED -
Default	PLOT SCALE = 40.0000' / in.	CHECKED -	REVISED -
	PLOT DATE = 1/30/2014	DATE -	REVISED -

STATE OF ILLINOIS
DEPARTMENT OF TRANSPORTATION

TYPICAL SECTIONS

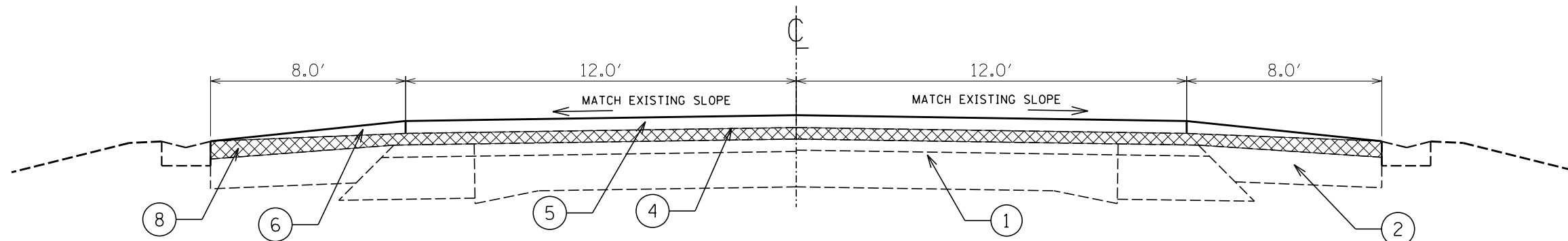
SCALE: SHEET 4 OF 6 SHEETS STA. TO STA.

F.A.P. RTE.	SECTION	COUNTY	TOTAL SHEETS	SHEET NO.
310	(104,105)RS-4	MERCER	32	10
CONTRACT NO. 68980				
ILLINOIS FED. AID PROJECT				



LT & RT STA 531+73.93 to 532+06.73
 LT & RT STA 541+98.10 to 542+35.10
 RT STA 613+94.33 to 614+36.98
 LT STA 615+18.68 to 615+61.33

RT STA 618+06.78 to 619+20.81
 LT STA 619+31.77 to 619+71.50
 RT STA 659+75.76 to 660+24.98



RT STA 641+68.02 to 642+04.11
 LT & RT STA 642+04.11 to 646+79.83
 LT STA 654+50.53 to 655+16.44
 LT & RT STA 655+16.44 to 659+75.76

(SEE DETAIL A ON SHEET 9)

- ① EXIST. PCC PAVEMENT W/OVERLAY
- ② EXIST. HMA SHOULDERS
- ③ EXIST. AGGREGATE SHOULDERS
- ④ PROP. HMA SURFACE REMOVAL 3/4"
- ⑤ PROP. POLY. HMA SURFACE CSE. MIX "D" N50 2"
- ⑥ PROP. HMA SURFACE CSE. MIX "C" N50 2"
- ⑦ PROP. AGGREGATE WEDGE SHOULDERS, TYPE B
- ⑧ PROP. HMA SURFACE REMOVAL (VARIABLE DEPTH)

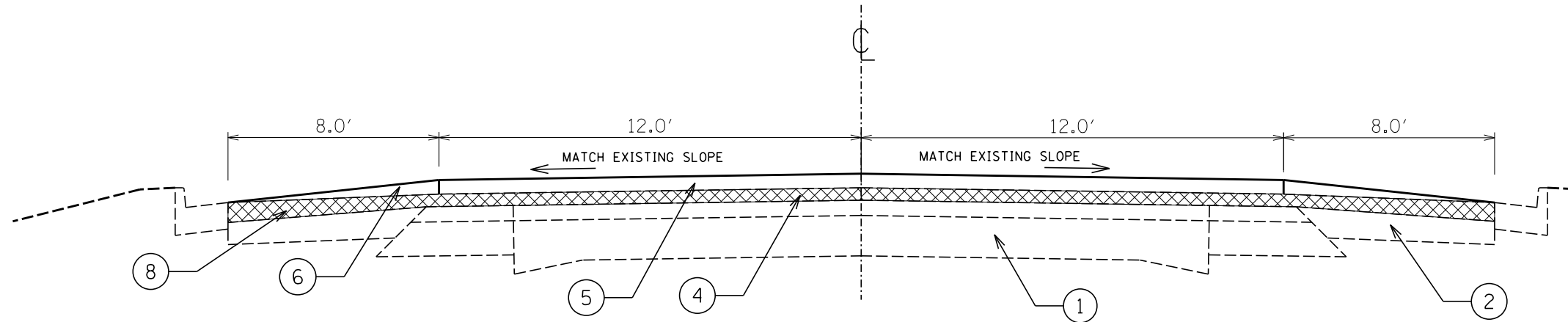
FILE NAME =	USER NAME = mendezp.j	DESIGNED -	REVISED -
S:\GEN\DRAW\STD&PLNS\SQUAD11\68980\468980 Plans.dgn		DRAWN -	REVISED -
Default	PLOT SCALE = 40.0000' / in.	CHECKED -	REVISED -
	PLOT DATE = 1/30/2014	DATE -	REVISED -

STATE OF ILLINOIS
 DEPARTMENT OF TRANSPORTATION

TYPICAL SECTIONS

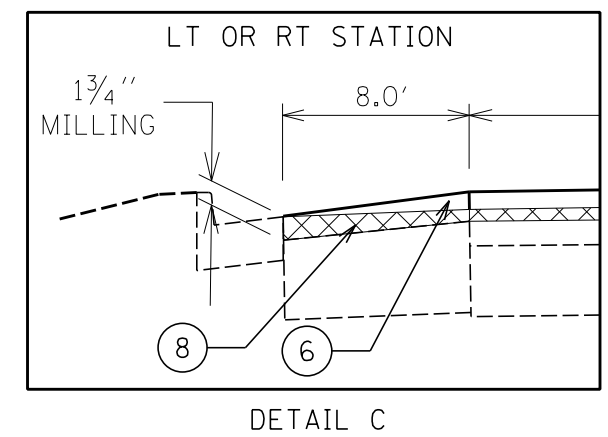
SCALE: SHEET 5 OF 6 SHEETS STA. TO STA.

F.A.P. RTE.	SECTION	COUNTY	TOTAL SHEETS	SHEET NO.
310	(104,105)RS-4	MERCER	32	11
CONTRACT NO. 68980				
ILLINOIS FED. AID PROJECT				



LT & RT STA 662+87.44 TO 669+82.10
(SEE DETAIL C BELOW)

- ① EXIST. PCC PAVEMENT W/OVERLAY
- ② EXIST. HMA SHOULDERS
- ③ EXIST. AGGREGATE SHOULDERS
- ④ PROP. HMA SURFACE REMOVAL $\frac{3}{4}$ "
- ⑤ PROP. POLY. HMA SURFACE CSE. MIX "D" N50 2"
- ⑥ PROP. HMA SURFACE CSE. MIX "C" N50 2"
- ⑦ PROP. AGGREGATE WEDGE SHOULDERS, TYPE B
- ⑧ PROP. HMA SURFACE REMOVAL (VARIABLE DEPTH)



FILE NAME =	USER NAME = mendezpj	DESIGNED -	REVISED -
S:\GEN\DRIFT\STD&PLNS\SQUAD11\68980\468980 Plans.dgn		DRAWN -	REVISED -
Default	PLOT SCALE = 40.0000' / in.	CHECKED -	REVISED -
	PLOT DATE = 1/30/2014	DATE -	REVISED -

STATE OF ILLINOIS
DEPARTMENT OF TRANSPORTATION

TYPICAL SECTIONS

SCALE: SHEET 6 OF 6 SHEETS STA. TO STA.

F.A.P. RTE.	SECTION	COUNTY	TOTAL SHEETS	SHEET NO.
310	(104,105)RS-4	MERCER	32	12
CONTRACT NO. 68980				
ILLINOIS FED. AID PROJECT				

SHORT-TERM PAVEMENT MARKING								
LOCATION STATION TO STATION			LENGTH (FOOT)	CENTERLINE (FOOT)	TRUCK LANE (FOOT)	TURN LANE (FOOT)	EDGE LINE DIAGONAL (FOOT)	
427+58.00	TO	439+61.33	1,203	361				
439+61.33	TO	458+84.42	1,923	577	577			
458+84.42	TO	476+75.24	1,791	537	537		215	
476+75.24	TO	485+60.08	885	265			106	
485+60.08	TO	490+92.56	532	160			128	
490+92.56	TO	496+89.67	597	179			72	
496+89.67	TO	507+32.32	1,043	313				
507+32.32	TO	507+86.00	54	16		16		
507+86.00	TO	511+85.10	399	120		120	48	
511+85.10	TO	514+08.83	224	67		67		
514+08.83	TO	531+73.93	1,765	530				
531+73.93	TO	533+77.34	203	61			49	
533+77.34	TO	540+44.91	BRIDGE OMISSION					
540+44.91	TO	542+35.10	190	57			46	
542+35.10	TO	613+94.33	7,159	2,148				
613+94.33	TO	615+18.68	124	37			15	
615+18.68	TO	615+92.63	74	22			18	
615+92.63	TO	617+76.13	BRIDGE OMISSION					
617+76.13	TO	619+71.50	195	59			47	
619+71.50	TO	626+88.36	717	215			86	
626+88.36	TO	641+68.02	1,480	444				
641+68.02	TO	642+04.11	36	11			4	
642+04.11	TO	646+79.83	476	143			114	
646+79.83	TO	654+50.83	771	231				
654+50.83	TO	655+16.44	66	20			8	
655+16.44	TO	659+75.76	459	138			110	
659+75.76	TO	660+24.98	49	15			6	
660+24.98	TO	662+87.44	262	79				
662+87.44	TO	669+82.10	695	208			167	
SUB-TOTAL				7,012	1,114	203	1,238	
GRAND TOTAL							9,567	

TEMPORARY PAVEMENT MARKING - LINE 8"							
MODIFIED URETHANE PAVEMENT MARKING - LINE 8"							
LOCATION STATION TO STATION			NO PASSING LANE		LENGTH (FOOT)	WHITE LINE	
			SB	NB		TRUCK LANE (FOOT)	TURN LANE & MEDIAN EDGE (FOOT)
439+05.55	TO	439+61.33			55.78	55.78	
439+61.33	TO	446+63.43		X	702.10	702.10	
446+63.43	TO	448+99.65			236.22	236.22	
448+99.65	TO	459+29.83	X		1,030.18	1,030.18	
459+29.83	TO	476+75.24	X	X	1,745.41	1,745.41	
505+91.90	TO	510+93.87	X	X	501.97		494.00
510+93.87	TO	513+93.31	X	X	299.44		337.00
TOTAL						3,769.68	831.00
GRAND TOTAL							4,601

TEMPORARY PAVEMENT MARKING - LINE 4"											
MODIFIED URETHANE PAVEMENT MARKING - LINE 4"											
LOCATION STATION TO STATION			NO PASSING LANE		LENGTH (FOOT)	WHITE LINE		YELLOW LINE			
			SB	NB		SOLID EDGE (FOOT)	SKIP DASH (FOOT)	SOLID (FOOT)	DOUBLE (FOOT)		
427+58.00	TO	433+05.16	X		547.16	1,094.32	140.00	547.16			
433+05.16	TO	433+37.97	X		32.81	65.61	10.00	32.81			
433+37.97	TO	439+05.55			567.64	1,135.28	142.00				
439+05.55	TO	439+61.33			55.78	111.55	14.00				
439+61.33	TO	446+63.43		X	702.10	1,404.19	176.00	702.10			
446+63.43	TO	448+99.65			236.22	472.43	60.00				
448+99.65	TO	459+29.83	X		1,030.18	2,060.36	258.00	1,030.18			
459+29.83	TO	476+75.24	X	X	1,745.41	3,490.82				3,490.82	
476+75.24	TO	479+77.07	X	X	301.83	603.67				603.67	
479+77.07	TO	485+21.69	X	X	544.62	1,089.25				1,089.25	
485+21.69	TO	497+19.20		X	1,197.51	2,395.02	300.00	1,197.51			
497+19.20	TO	504+90.20	X		771.00	1,542.00	193.00	771.00			
504+90.20	TO	505+91.90	X	X	101.70	203.41				203.41	
505+91.90	TO	510+93.87	X	X	501.97	1,003.95				1,685.37	
510+93.87	TO	513+93.31	X	X	299.44	598.89				598.89	
513+93.31	TO	519+82.98	X	X	589.67	1,179.34				2,358.68	
519+82.98	TO	520+65.00	X	X	82.02	164.04				328.08	
520+65.00	TO	527+08.05		X	643.05	1,286.09	164.00	643.05			
527+08.05	TO	533+77.34			669.29	1,338.58	167.32				
533+77.34	TO	540+44.91	BRIDGE OMISSION								
540+44.91	TO	564+77.73			2,432.82	4,865.64	608.21				
564+77.73	TO	577+04.77			1,227.04	2,454.07	307.00				
577+04.77	TO	583+80.62	X		675.85	1,351.70	169.00	675.85			
583+80.62	TO	599+39.02	X	X	1,558.40	3,116.79				3,116.79	
599+39.02	TO	610+80.75		X	1,141.73	2,283.46	286.00	1,141.73			
610+80.75	TO	615+92.63			511.88	1,023.76	128.00				
615+92.63	TO	617+76.13	BRIDGE OMISSION								
617+76.13	TO	620+05.95			229.82	459.63	58.00				
620+05.95	TO	632+69.07	X		1,263.12	2,526.24	316.00	1,263.12			
632+69.07	TO	669+82.10	X	X	3,713.03	7,426.06				7,426.06	
Matherville Road			X	X	85.00					170.00	
SUB-TOTALS						46,746.16	3,496.53	8,004.50	21,071.02		
TOTALS						46,746.16		32,572.04			
GRAND TOTAL										79,318	

TEMPORARY PAVEMENT MARKING - LETTERS AND SYMBOLS					
MODIFIED URETHANE PAVEMENT MARKING - LETTERS AND SYMBOLS					
LOCATION STATION TO STATION			LENGTH (FOOT)	TURN LANE ARROWS (EACH)	AREA (SQ FT)
504+90.20	TO	510+93.87	603.67	2.00	31.2
510+93.87	TO	520+65.00	971.13	2.00	31.2
GRAND TOTAL					62.40

TEMPORARY PAVEMENT MARKING - LINE 12"					
MODIFIED URETHANE PAVEMENT MARKING - LINE 12"					
LOCATION STATION TO STATION			LENGTH (FOOT)	WHITE LINE DIAGONAL (FOOT)	YELLOW LINE DIAGONAL (FOOT)
504+90.20	TO	510+93.87	603.67	173.50	133
510+93.87	TO	520+65.00	971.13		190.5
TOTAL				173.50	323.50
GRAND TOTAL					497

TEMPORARY PAVEMENT MARKING - LINE 24"	
MODIFIED URETHANE PAVEMENT MARKING - LINE 24"	
LOCATION	WHITE LINE STOP BAR (FOOT)
MATHERVILLE RD (CH 24) INTERSECTION	30.00
TOTAL	30.00

WORK ZONE PAVEMENT MARKING REMOVAL	
LOCATION	70301000 (SQ FT)
ENTIRE PROJECT	1,063
TOTAL	1,063

RAISED REFLECTIVE PAVEMENT MARKER					
LOCATION STATION TO STATION			78100100		
			TWO WAY AMBER (EACH)	ONE WAY CRYSTAL (EACH)	ONE WAY AMBER (EACH)
427+58.00	TO	439+55.55	14		
439+55.55	TO	476+75.24	48	48	
476+75.24	TO	504+90.20	36		
504+90.20	TO	520+65.00	32	17	45
520+65.00	TO	669+82.10	182.0		
SUB-TOTAL			312.0	65.0	45.0
TOTAL			422		

TRAFFIC CONTROL SCHEDULE			
LOCATION	70100450 TRAFFIC CONTROL AND PROTECTION, STANDARD 701201 (LSUM)	70100460 TRAFFIC CONTROL AND PROTECTION, STANDARD 701306 (LSUM)	70100600 TRAFFIC CONTROL AND PROTECTION, STANDARD 701336 (LSUM)
ENTIRE PROJECT	1	1	1
TOTALS	1	1	1

RAISED REFLECTIVE PAVEMENT MARKER REMOVAL	
LOCATION	78300200 (EACH)
ENTIRE PROJECT	422
TOTAL	422

CONSTRUCTING TEST STRIP	
LOCATION	40600895 (EACH)
ENTIRE PROJECT	1
TOTAL	1

CONSTRUCTION STATION LAYOUT	
LOCATION	XZ013798 (L SUM)
ENTIRE PROJECT	1
TOTAL	1

CLASS D PATCHES, 14 INCH		
LOCATION	44201815 TYPE II (SQ YD)	44201821 TYPE IV (SQ YD)
FROM RIDGE RD TO 132ND ST	48	40
FROM 132ND ST TO 125TH ST	0	0
FROM 125TH ST TO 115TH ST	8	0
FROM 115TH ST TO 10TH AVE IN VIOLA	48	0
TOTAL	104	40

ENGINEER'S FIELD OFFICE, TYPE A	
LOCATION	67000400 (CAL MO)
JOBSITE	3
TOTAL	3

MOBILIZATION	
LOCATION	67100100 (L SUM)
ENTIRE PROJECT	1
TOTAL	1

PERMANENT SURVEY MARKERS, TYPE I PERMANENT SURVEY TIES		
LOCATION	66700205 (EACH)	X6670109 (EACH)
LOCATION 1	1	4
LOCATION 2	1	4
LOCATION 3	1	4
LOCATION 4	1	4
LOCATION 5	1	4
LOCATION 6	1	0
TOTAL	6	20

STONE DUMPED RIPRAP CLASS A5	
LOCATION	28100209 (TON)
S.N. 066-0017	280
TOTAL	280

MATERIAL TRANSFER DEVICE	
LOCATION	Z0034105 (TON)
POLY HMA SURFACE CSE MIX D, N50	8,038
TOTAL	8,038

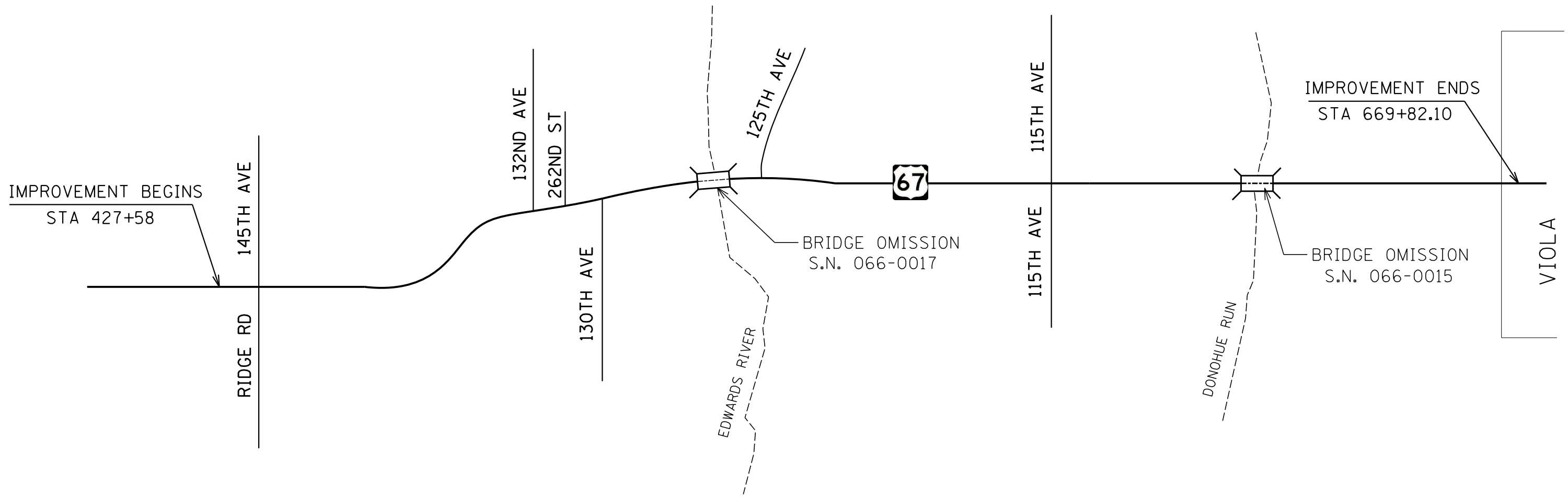
* FOR MORE INFORMATION GO TO SHEET 20-25

TABULATION OF RESURFACING QUANTITIES

LOCATION	TOTAL ROADWAY WIDTH (FOOT)	LENGTH (FOOT)	AREA (SQ YD)	HMA SURFACE REMOVAL BUTT JOINT (SQ YD)	TEMPORARY RAMP (SQ YD)	HMA SURFACE REMOVAL 3/4" (SQ YD)	HMA SURFACE REMOVAL VAR. DEPTH (SQ YD)	POLY. BIT MATERIALS PRIME COAT (TON)	POLY HMA SURFACE CSE MIX D N50 (TON)	INCIDENTAL HMA SURFACE (TON)	HMA SURFACE COURSE MIX C N50				AGGREGATE WEDGE SHOULDERS, TYPE B					
											LEFT AREA	LEFT SIDE	RIGHT AREA	RIGHT SIDE	LEFT AREA	LEFT SIDE	RIGHT AREA	RIGHT SIDE		
											SQ YD	TON	SQ YD	TON	SQ YD	TON	SQ YD	TON		
LT STA. 619 + 32 TO 619 + 72	8.00	39.73				35.32		0.01			35.32	4.00								
RT STA. 619 + 21 TO 619 + 72	8.00	50.69					45.06	0.02					45.06	5.10						
LT&RT STA. 619 + 72 TO 626 + 88	12.00	716.86				318.60	637.21	0.38			318.60	36.43	637.21	72.11						
LT&RT STA. 626 + 88 TO 641 + 68	8.00	1479.66				1315.25		0.53			657.63	75.19	657.63	75.19						
LT&RT STA. 641 + 68 TO 642 + 04	12.00	36.09				16.04	32.08	0.02			16.04	1.83	32.08	3.63						
LT&RT STA. 642 + 04 TO 646 + 80	16.00	475.72					845.72	0.34			422.86	47.85	422.86	47.85						
LT&RT STA. 646 + 80 TO 654 + 51	8.00	771.00				685.33		0.27			342.67	39.18	342.67	39.18						
LT&RT STA. 654 + 51 TO 655 + 16	12.00	65.91				29.29	58.59	0.04			58.59	6.63	29.29	3.35						
LT&RT STA. 655 + 16 TO 659 + 76	16.00	459.32					816.57	0.33			408.28	46.20	408.28	46.20						
LT&RT STA. 659 + 76 TO 660 + 25	12.00	49.22				65.63		0.03			21.88	2.50	43.75	4.95						
LT&RT STA. 660 + 25 TO 662 + 87	8.00	262.46				233.30		0.09			116.65	13.34	116.65	13.34						
LT&RT STA. 662 + 87 TO 669 + 82	16.00	694.66					1234.95	0.49			617.48	69.88	617.48	69.88						
ADDITIONAL SURFACE (JOINT TREATMENT)																				
STA. 427 + 58 TO 433 + 05		547.00				20.26		0.02	2.31											
STA. 433 + 05 TO 479 + 77		4672.00				346.07		0.28	39.41											
STA. 479 + 77 TO 504 + 90		2513.00				93.07		0.07	10.60											
STA. 504 + 90 TO 520 + 65		1575.00				175.00		0.14	24.31											
STA. 520 + 65 TO 533 + 77		1312.00				48.59		0.04	5.53											
STA. 533 + 77 TO 540 + 45																				
STA. 540 + 45 TO 615 + 93		7548.00				279.56		0.22	31.84											
STA. 615 + 93 TO 617 + 76																				
STA. 617 + 76 TO 669 + 82		5206.00				192.81		0.15	21.96											
SIDE ROADS																				
East 145th Ave		50.00	249.44	30.00	13.33	219.44		0.01		27.94										
West Ridge Rd		30.00	193.33	36.67	15.56	156.66		0.01		21.65										
East 132nd Ave		24.00	122.67	37.78	17.78	84.89		0.02		13.74										
East 262nd St		24.00	104.00	28.89	12.22	75.11		0.01		11.65										
West 130th Ave (CH 24 Matherville Rd)		85.00	916.11	41.11	18.89	875.00		0.02		102.60										
East 125th Ave		44.00	278.67	38.89	17.78	239.78		0.02		31.21										
West 115th Ave		50.00	229.78	36.67	16.67	193.11		0.01		25.74										
East 115th Ave		36.00	86.67	35.56	16.67	51.11		0.01		9.71										
ENTRANCES & MAILBOX TURNOUTS																				
Entrances (3)			13.89							4.67										
Entrance + Mailbox Turnout (15)			15.78							26.51										
Mailbox Turnout (4)			14.67							6.57										
SUB-TOTAL						285.56	128.89	5,749.25	3,670.18	3.59	135.96	281.98	3,015.99	343.03	3,352.96	380.78				
SUB-TOTAL (FROM SHEET 1)						480.00	80.00	84,525.11	4,105.38	35.64	7,901.87		9,099.48	1,038.14	9,891.42	1,126.83	7,791.04	887.31	7,791.04	887.31
GRAND-TOTAL						766	209	90,274	7,776	39.23	8,038	282	12,115	1,381	13,244	1,508	7,791	887	7,791	887
												TOTAL		25,359.84	2,889	TOTAL		15,582.08	1,775	

PRIME COAT CONVERSION FACTORS		
SURFACE TYPE	BIT PR COAT (GAL/SQ YD)	AGG PR COAT (LB/SQ YD)
COLD MILLED SURFACES	0.1	4
EXISTING PAVEMENT	0.05	4
NEW BITUMINOUS COURSES	0.05	2

BITUMINOUS & AGGREGATE CONVERSION FACTORS	
SURFACE TYPE	
BIT. SURF. COURSES	112 LB /SQ YD/IN
ALL OTHER BIT.	112 LB /SQ YD/IN
AGGREGATE SHOULDERS	2.05 TONS/CUYD



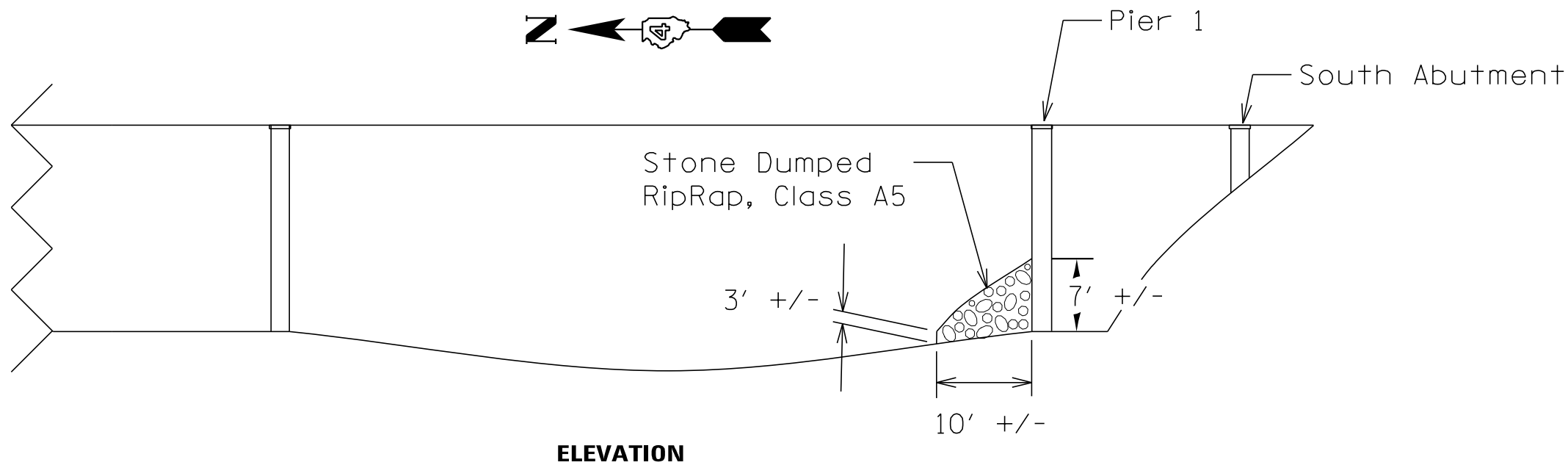
FILE NAME =	USER NAME = mendezp.j	DESIGNED -	REVISED -
S:\GEN\DRAWING\STD&PLNS\SQUAD11\68980\468980 Plans.dgn		DRAWN -	REVISED -
Default	PLOT SCALE = 40.0000' / in.	CHECKED -	REVISED -
	PLOT DATE = 1/30/2014	DATE -	REVISED -

**STATE OF ILLINOIS
DEPARTMENT OF TRANSPORTATION**

US 67 LINE DIAGRAM

SCALE: SHEET 1 OF 1 SHEETS STA. TO STA.

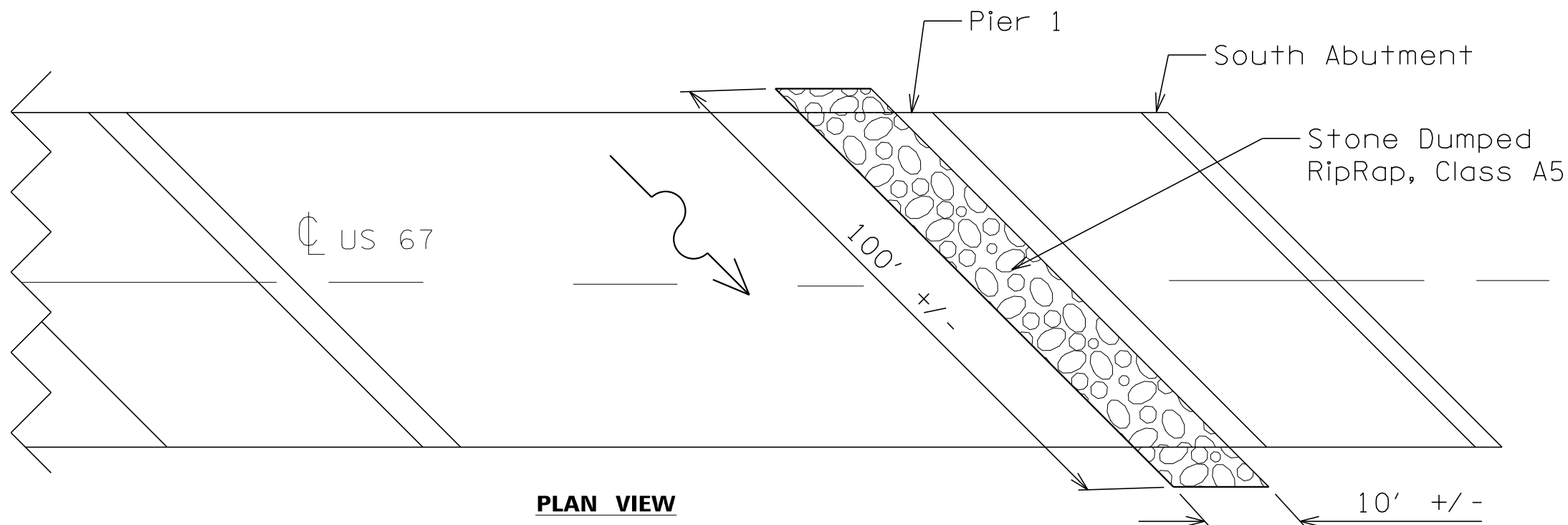
F.A.P. RTE.	SECTION	COUNTY	TOTAL SHEETS	SHEET NO.
310	(104,105)RS-4	MERCER	32	17
				CONTRACT NO. 68980
ILLINOIS FED. AID PROJECT				



NOTE

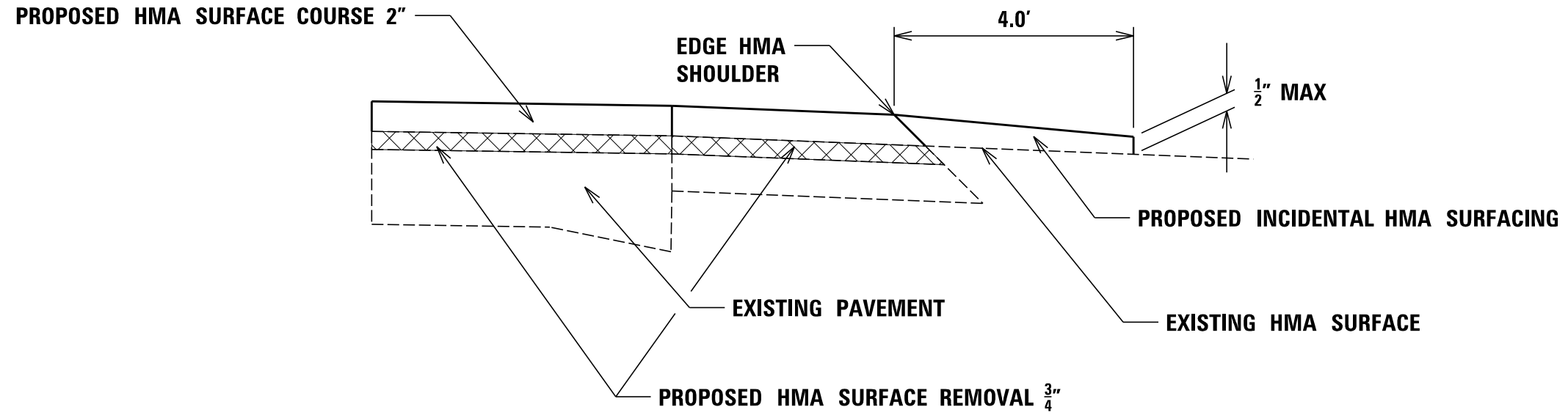
Location and Quantities of Riprap shall be verified with the Resident Engineer before ordering any material.

Drawing not to scale. For Information only.

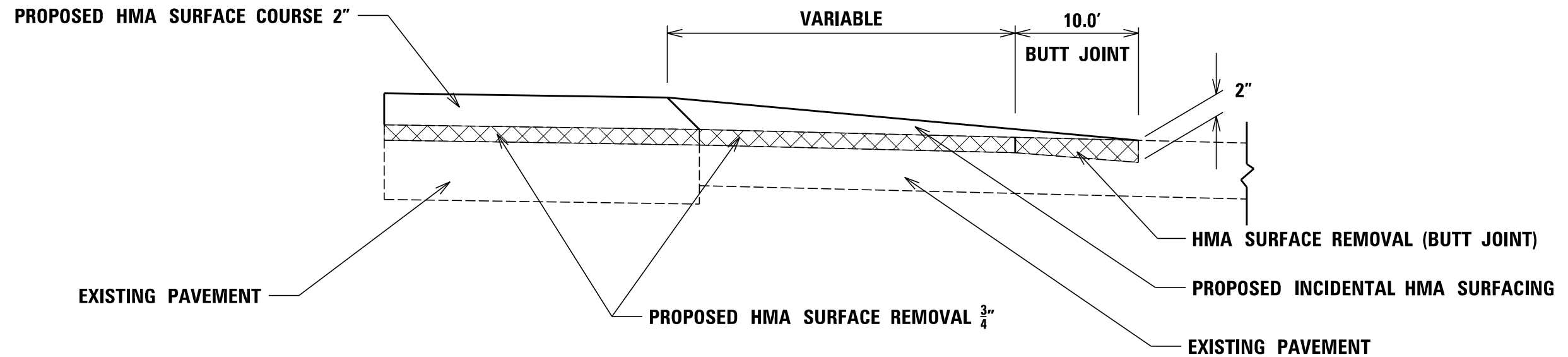


FILE NAME =	USER NAME = mendezp.j	DESIGNED -	REVISED -	STATE OF ILLINOIS DEPARTMENT OF TRANSPORTATION	RIPRAP PLACEMENT EDWARDS RIVER (STRUCTURE #066-0017)	F.A.P. RTE.	SECTION	COUNTY	TOTAL SHEETS	SHEET NO.	
S:\GEN\DRAWING\STD&PLNS\SQUAD11\68980\468980 Plans.dgn	PLOT SCALE = 40.0000' / in.	DRAWN -	REVISED -			310	(104,105)RS-4	MERCER	32	18	
Default	PLOT DATE = 1/30/2014	CHECKED -	REVISED -			SCALE: SHEET 1 OF 1 SHEETS STA. TO STA.		CONTRACT NO. 68980			
		DATE -	REVISED -			ILLINOIS FED. AID PROJECT					

ENTRANCES AND MAILBOX TURNOUTS DETAIL



SIDEROAD DETAIL



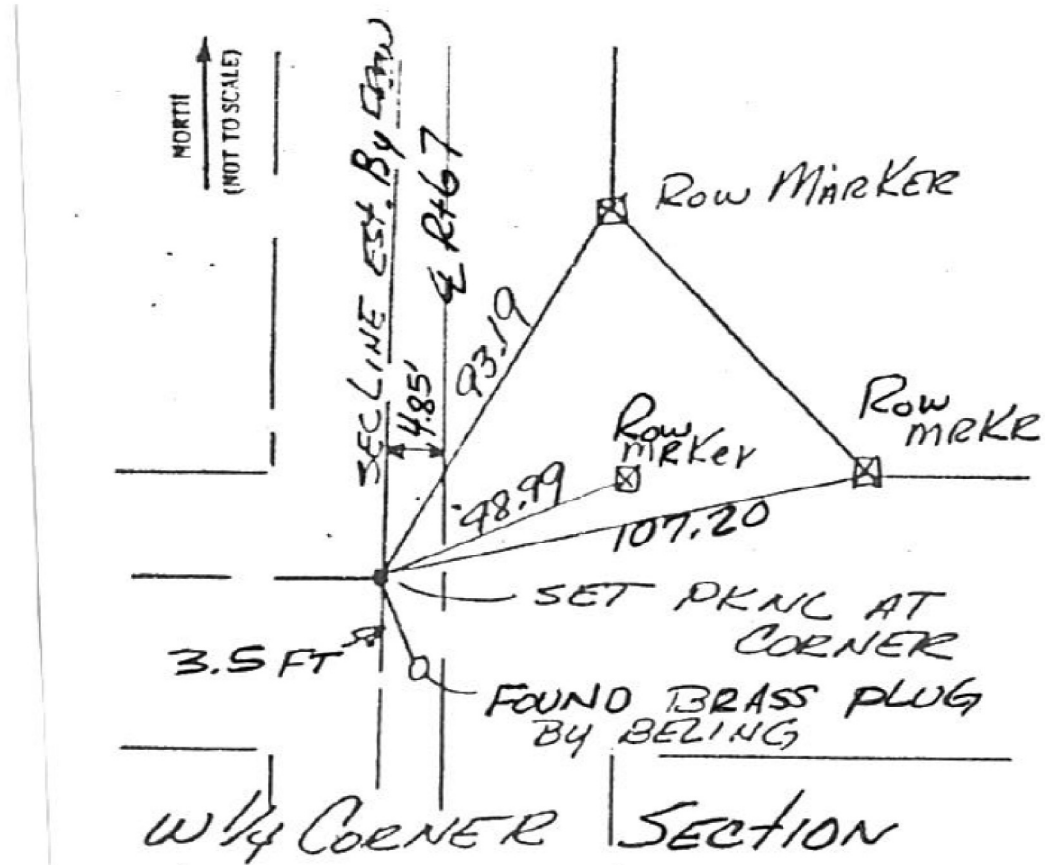
FILE NAME =	USER NAME = mendezp.j	DESIGNED -	REVISED -	STATE OF ILLINOIS DEPARTMENT OF TRANSPORTATION	SIDE ROAD, ENTRANCES & MAILBOX TURNOUT DETAILS	F.A.P. RTE.	SECTION	COUNTY	TOTAL SHEETS	SHEET NO.	
S:\GEN\DRAWING\STD&PLNS\SQUAD11\68980\468980 Plans.dgn	PLOT SCALE = 40.0000' / in.	DRAWN -	REVISED -			310	(104,105)RS-4	MERCER	32	19	
Default	PLOT DATE = 1/29/2014	CHECKED -	REVISED -			CONTRACT NO. 68980					
		DATE -	REVISED -			SCALE:	SHEET 1	OF 1	SHEETS	STA.	TO STA.

MONUMENT RECORD

OF LAND SURVEY MONUMENTS SITUATED IN
 SECTION 23, TOWNSHIP 15N
 RANGE 2 West, OF THE
4+7 PRINCIPAL MERIDIAN,
MERCER COUNTY, ILLINOIS

MONUMENT DESCRIPTION AND REMARKS: SET PK NL @ the NW CORNER
AND West 1/4 CORNER, SET 5/8" RODS AT
the N 1/4 CORNER AND CENTER OF SECTION

LOCATION 1



FILE NAME =	USER NAME = mendezp.j	DESIGNED -	REVISED -
S:\GEN\DRAWING\STD&PLNS\SQUAD11\68980\468980 Plans.dgn		DRAWN -	REVISED -
Default	PLOT SCALE = 40.0000' / in.	CHECKED -	REVISED -
	PLOT DATE = 1/29/2014	DATE -	REVISED -

STATE OF ILLINOIS
 DEPARTMENT OF TRANSPORTATION

SECTION CORNER
 RE-MONUMENTATION

SCALE: SHEET 1 OF 6 SHEETS STA. TO STA.

F.A.P. 310	SECTION	COUNTY	TOTAL SHEETS	SHEET NO.
US 67	(104, 105)RS-4	MERCER	32	20
CONTRACT NO. 68980			ILLINOIS FED. AID PROJECT	

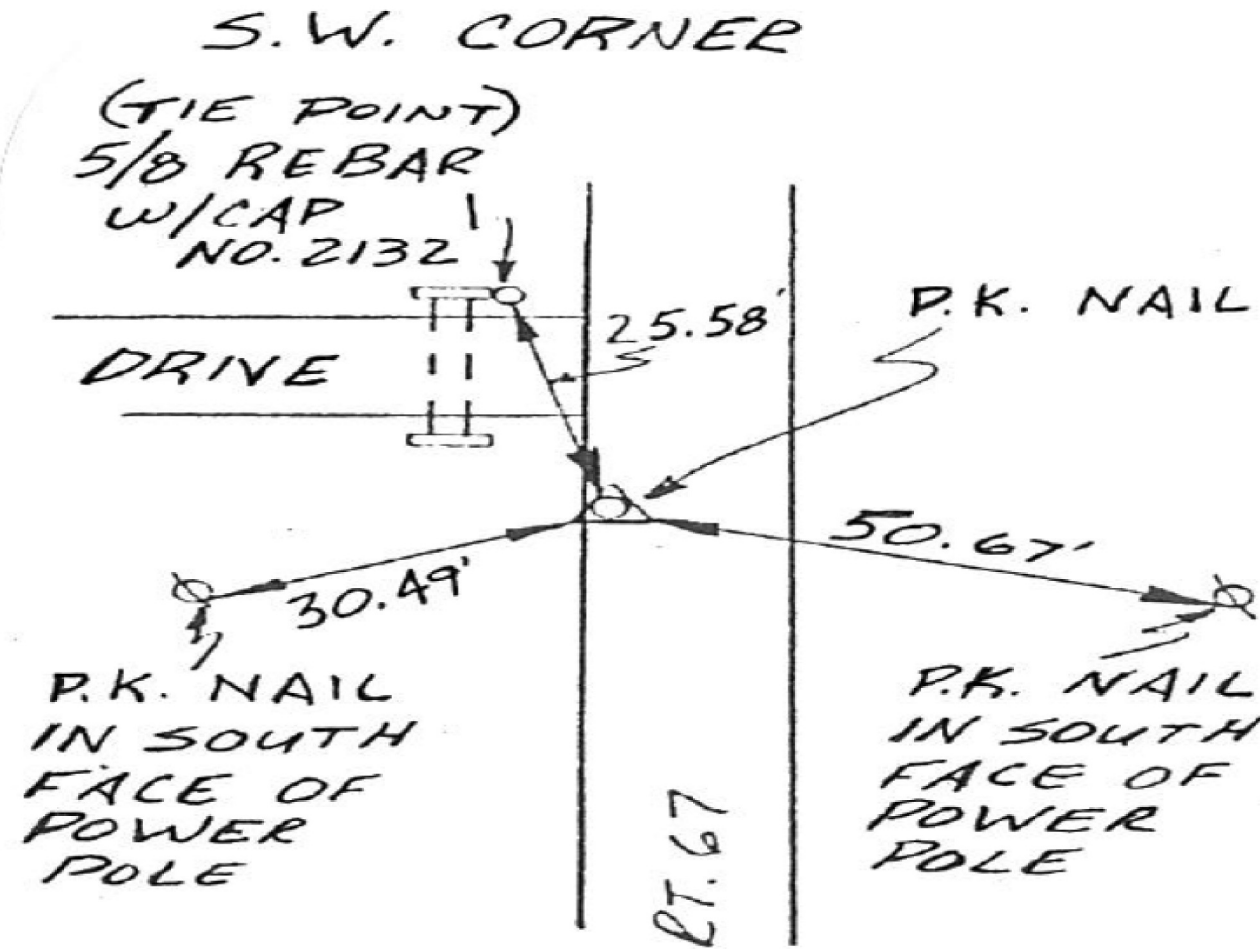
"MONUMENT RECORD"

OF

LAND SURVEY MONUMENTS SITUATED IN SECTION 23, TOWNSHIP 15 N,
 RANGE 2 W, OF THE 4TH PRINCIPAL MERIDIAN, MERCER,
 COUNTY, ILLINOIS.

MONUMENT DESCRIPTION AND REMARKS: S.W. CORNER - SET
P.K. NAIL IN ROAD 10.65' WEST OF CENTER LINE.
E 1/4 CORNER - FOUND R.R. SPIKE 2" DEEP IN
GRAVEL ROAD, ±3' EAST OF E OF 2700E.

LOCATION 2



FILE NAME =	USER NAME = mendezp.j	DESIGNED -	REVISED -
S:\GEN\DRAWING\STD&PLNS\SQUAD11\68980\468980 Plans.dgn		DRAWN -	REVISED -
Default	PLOT SCALE = 40.0000' / in.	CHECKED -	REVISED -
	PLOT DATE = 1/29/2014	DATE -	REVISED -

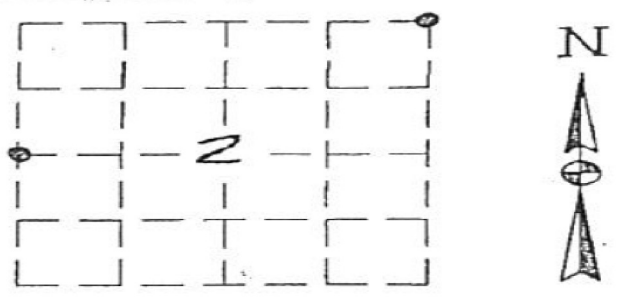
STATE OF ILLINOIS
 DEPARTMENT OF TRANSPORTATION

SECTION CORNER
 RE-MONUMENTATION

SCALE: SHEET 2 OF 6 SHEETS STA. TO STA.

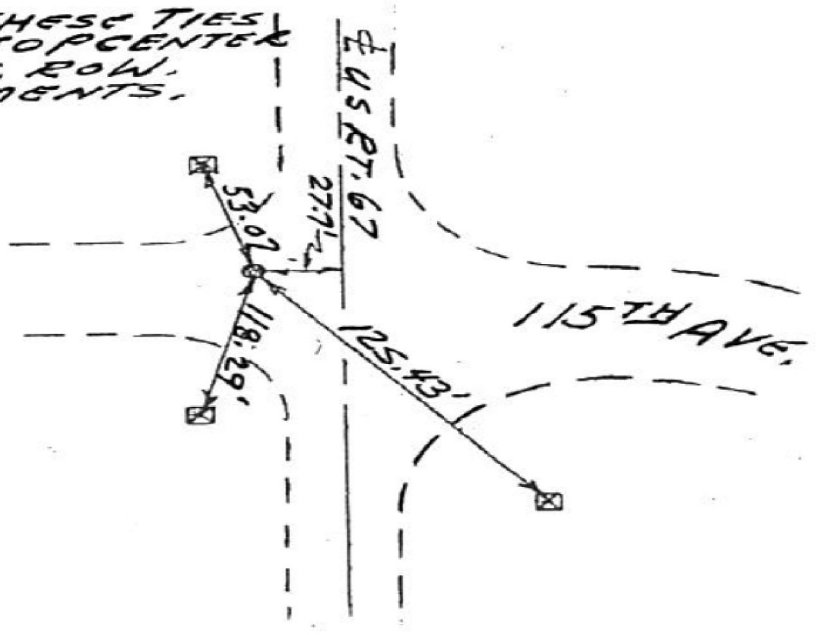
F.A.P. 310	SECTION	COUNTY	TOTAL SHEETS	SHEET NO.
US 67	(104, 105)RS-4	MERCER	32	21
			68980	
ILLINOIS FED. AID PROJECT				

"MONUMENT RECORD"
 OF
 LAND SURVEY MONUMENTS
 SITUATED IN SECTION 2
 TOWNSHIP 14 NORTH
 RANGE 2 W , 4TH P.M.
MERCER COUNTY, IL



LOCATION 3

NOTE: THESE TIES
 ARE TO TOP CENTER
 OF CONC. ROW
 MONUMENTS.



W. 1/4 CORNER SEC. 2-14-2
 FOUND BRASS PLATE
 IN ASPHALT

FILE NAME =	USER NAME = mendezp.j	DESIGNED -	REVISED -	STATE OF ILLINOIS DEPARTMENT OF TRANSPORTATION	SECTION CORNER RE-MONUMENTATION	F.A.P. 310	SECTION	COUNTY	TOTAL SHEETS	SHEET NO.	
S:\GEN\DRAWING\STD&PLNS\SQUAD11\68980\468980 Plans.dgn	PLOT SCALE = 40.0000' / in.	DRAWN -	REVISED -			US 67	(104, 105)RS-4	MERCER	32	22	
Default	PLOT DATE = 1/29/2014	CHECKED -	REVISED -			SCALE: SHEET 3 OF 6 SHEETS STA. TO STA.		CONTRACT NO. 68980			
		DATE -	REVISED -			ILLINOIS FED. AID PROJECT					

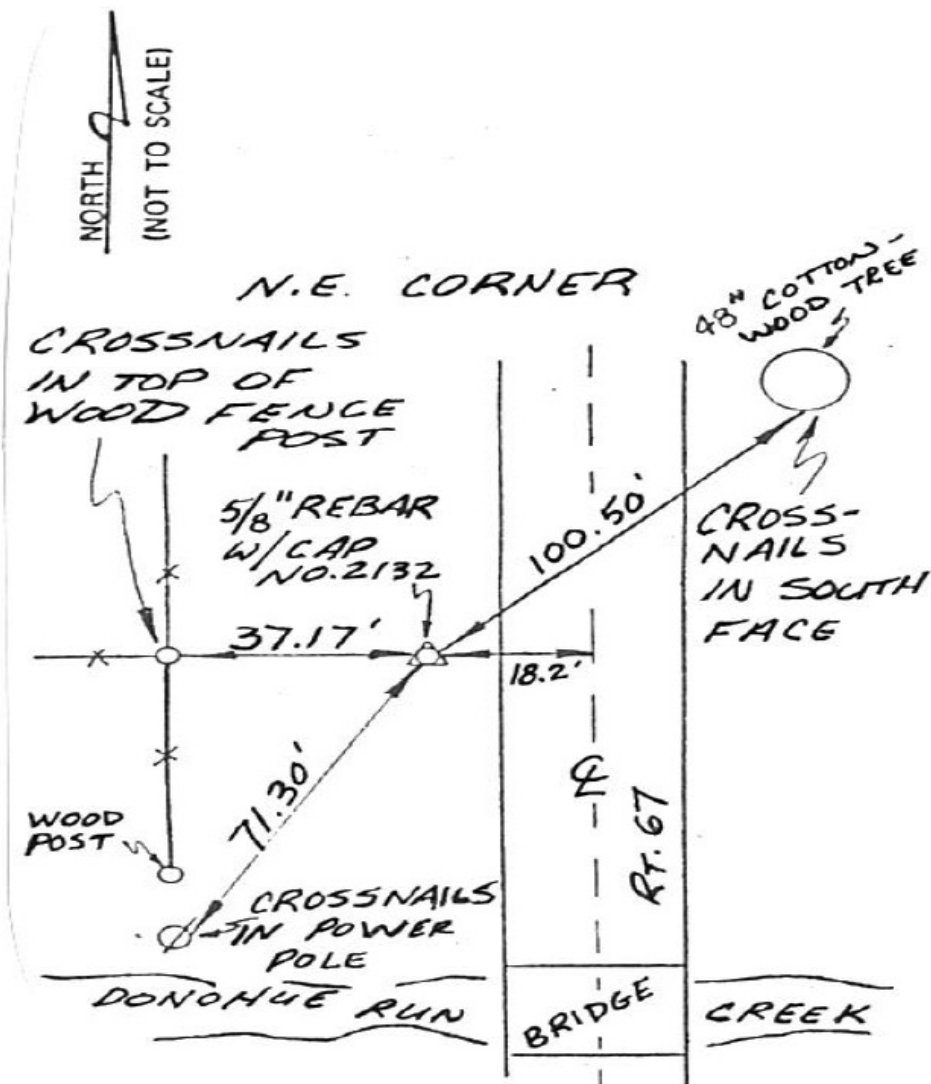
"MONUMENT RECORD"

OF

LAND SURVEY MONUMENTS SITUATED IN SECTION 10, TOWNSHIP 14N,
 RANGE 2W, OF THE 4TH PRINCIPAL MERIDIAN, MERCER
 COUNTY, ILLINOIS.

MONUMENT DESCRIPTION AND REMARKS: AT N.E. CORNER - SET
5/8" REBAR W/CAP NO. 2132. AT E 1/4 CORNER. SET
P.K. NAIL IN ROAD (4.5.67) 1.3' WEST OF CENTERLINE.

LOCATION 4



FILE NAME =	USER NAME = mendezpj	DESIGNED -	REVISED -
S:\GEN\DRAWING\STD&PLNS\SQUAD11\68980\468980 Plans.dgn		DRAWN -	REVISED -
Default	PLOT SCALE = 40.0000' / in.	CHECKED -	REVISED -
	PLOT DATE = 1/29/2014	DATE -	REVISED -

STATE OF ILLINOIS
 DEPARTMENT OF TRANSPORTATION

SECTION CORNER
 RE-MONUMENTATION

SCALE: SHEET 4 OF 6 SHEETS STA. TO STA.

F.A.P. 310	SECTION	COUNTY	TOTAL SHEETS	SHEET NO.
US 67	(104, 105)RS-4	MERCER	32	23
CONTRACT NO. 68980			ILLINOIS FED. AID PROJECT	

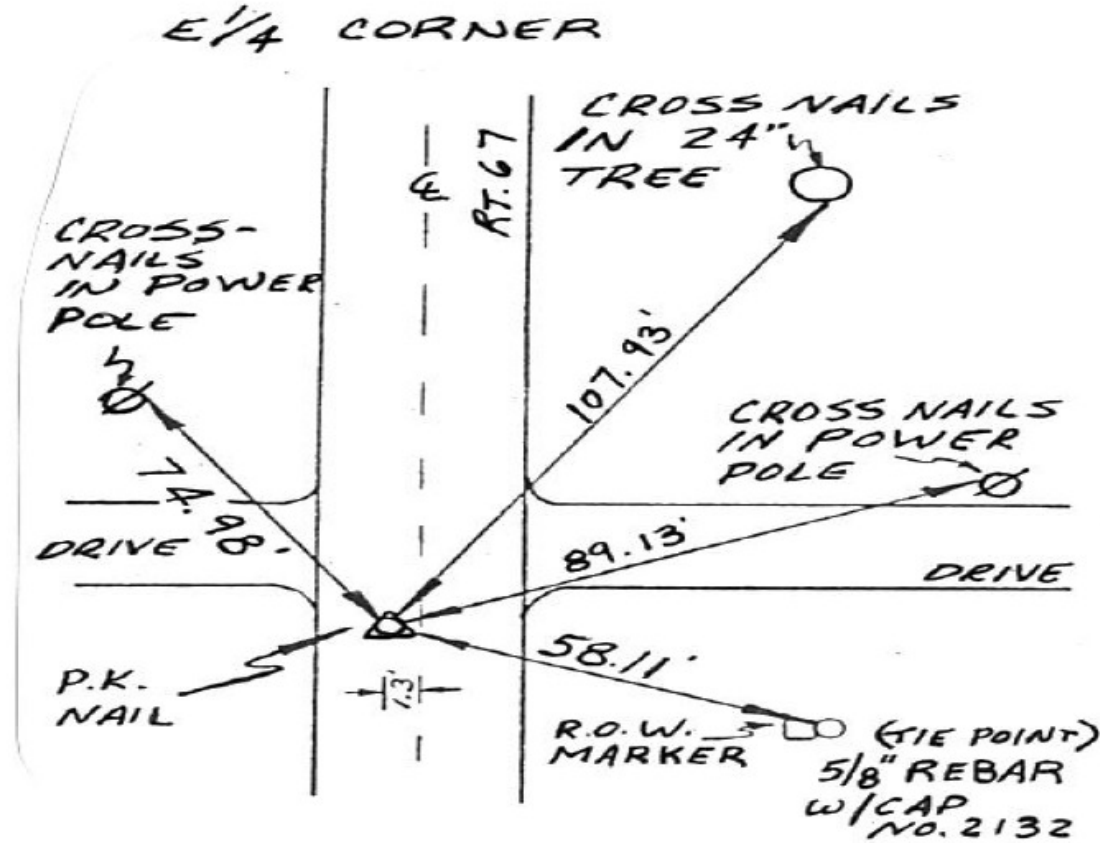
"MONUMENT RECORD"

OF

LAND SURVEY MONUMENTS SITUATED IN SECTION 10, TOWNSHIP 14N,
 RANGE 2W, OF THE 4TH PRINCIPAL MERIDIAN, MERCER,
 COUNTY, ILLINOIS.

MONUMENT DESCRIPTION AND REMARKS: AT N.E. CORNER - SET
5/8" REBAR W/CAP NO. 2132. AT E 1/4 CORNER - SET
P.K. NAIL IN ROAD (H.S. 67) 1.3' WEST OF CENTERLINE.

LOCATION 5



FILE NAME =	USER NAME = mendezpj	DESIGNED -	REVISED -
S:\GEN\DRAWING\STD&PLNS\SQUAD11\68980\468980 Plans.dgn		DRAWN -	REVISED -
Default	PLOT SCALE = 40.0000' / in.	CHECKED -	REVISED -
	PLOT DATE = 1/29/2014	DATE -	REVISED -

STATE OF ILLINOIS
 DEPARTMENT OF TRANSPORTATION

SECTION CORNER
 RE-MONUMENTATION

SCALE: SHEET 5 OF 6 SHEETS STA. TO STA.

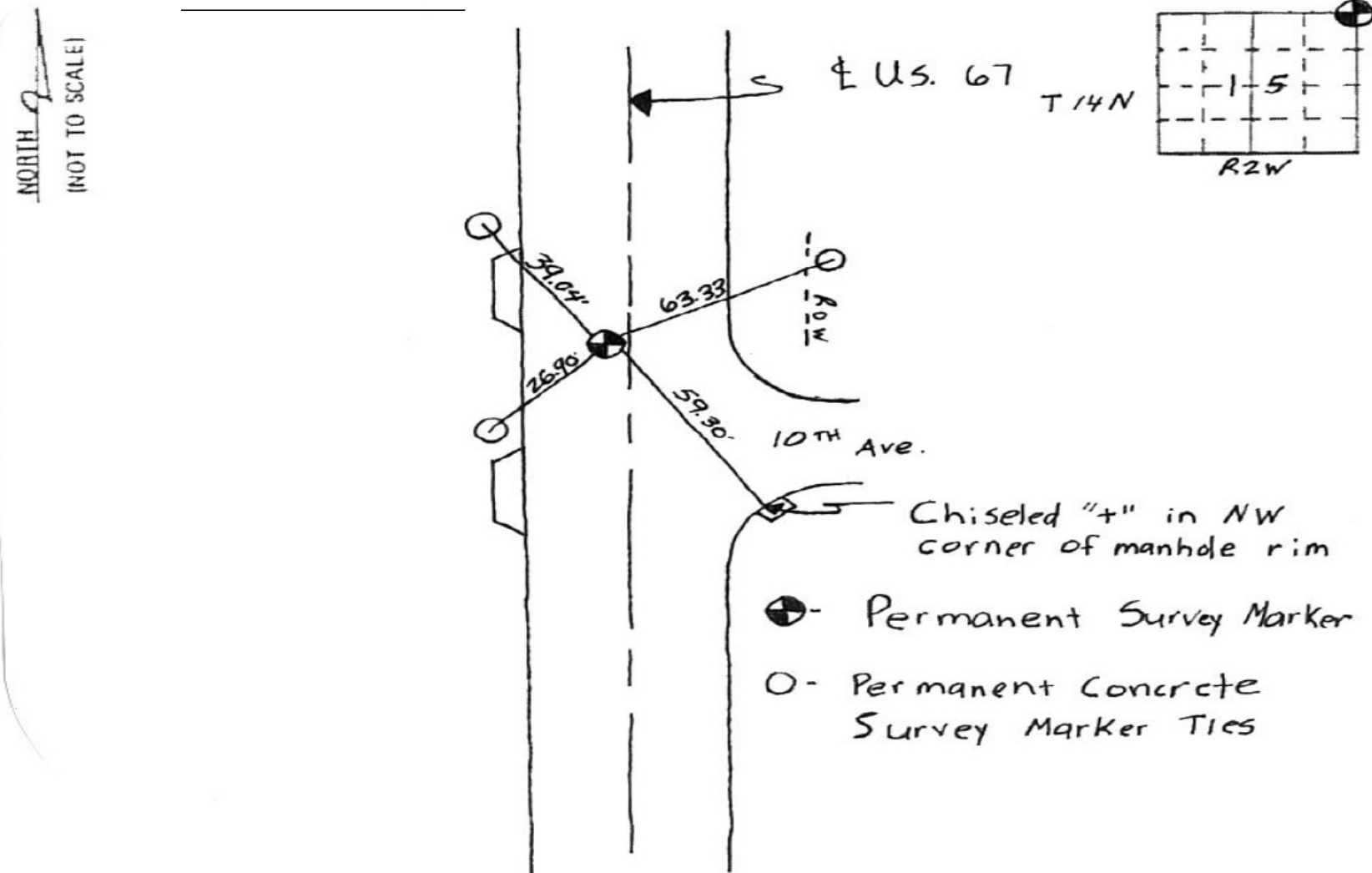
F.A.P. 310	SECTION	COUNTY	TOTAL SHEETS	SHEET NO.
US 67	(104, 105)RS-4	MERCER	32	24
CONTRACT NO. 68980			ILLINOIS FED. AID PROJECT	

"MONUMENT RECORD"

OF
 LAND SURVEY MONUMENTS SITUATED IN SECTION 15, TOWNSHIP 14N,
 RANGE 2W, OF THE 4TH PRINCIPAL MERIDIAN, Mercer
 COUNTY, ILLINOIS.

MONUMENT DESCRIPTION AND REMARKS: Permanent Survey Marker
BRASS DISK IN PAVEMENT 4.65' WEST OF US 67 CENTERLINE. NE CORNER
SEC 15 T14N R2W 4TH PM.

LOCATION 6

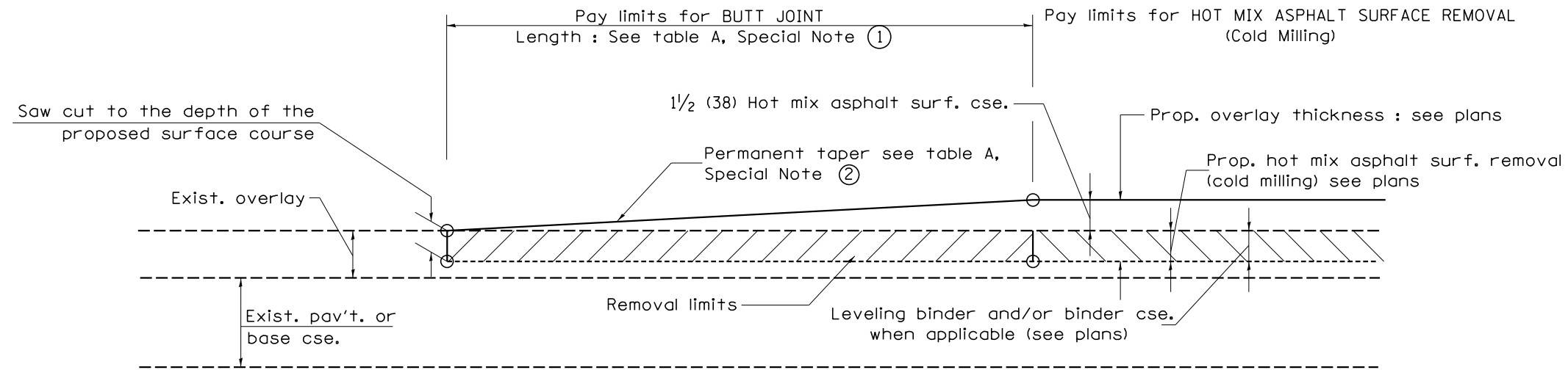


FILE NAME =	USER NAME = mendezpj	DESIGNED -	REVISED -
S:\GEN\DRAWING\STD&PLNS\SQUAD11\68980\468980 Plans.dgn		DRAWN -	REVISED -
Default	PLOT SCALE = 40.0000' / in.	CHECKED -	REVISED -
	PLOT DATE = 1/29/2014	DATE -	REVISED -

STATE OF ILLINOIS
 DEPARTMENT OF TRANSPORTATION

SECTION CORNER RE-MONUMENTATION	
SCALE:	SHEET 6 OF 6 SHEETS STA. TO STA.

F.A.P. 310	SECTION	COUNTY	TOTAL SHEETS	SHEET NO.
US 67	(104, 105)RS-4	MERCER	32	25
CONTRACT NO. 68980			ILLINOIS FED. AID PROJECT	



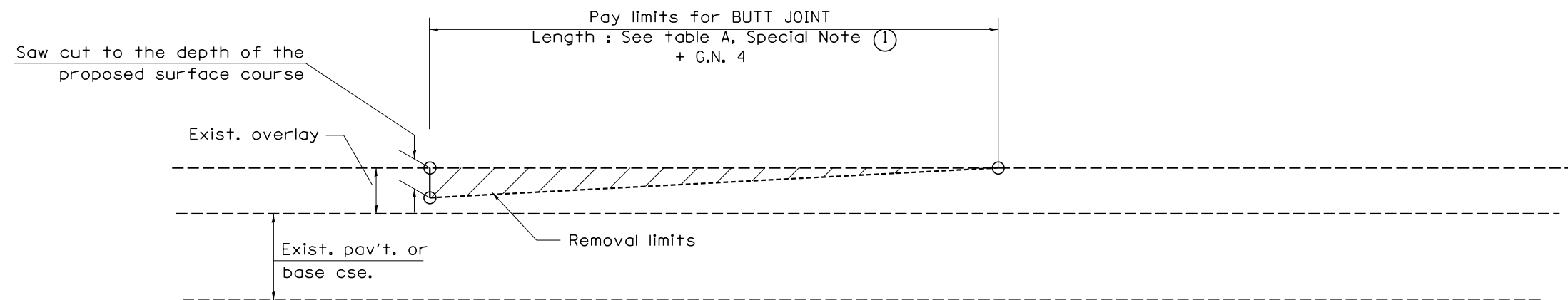
CASE 1 : WITH HOT MIX ASPHALT SURFACE REMOVAL (COLD MILLING)

**TABLE A
TAPER RATES**

SPECIAL NOTE NUMBER	ELEMENT	MAINLINE INTERSTATES & 4-LANE EXPRESSWAYS	ALL OTHERS
①	BUTT JOINT TAPER RATE	1:480	1:240
②	TEMPORARY RAMP TAPER RATE	1:80	1:40

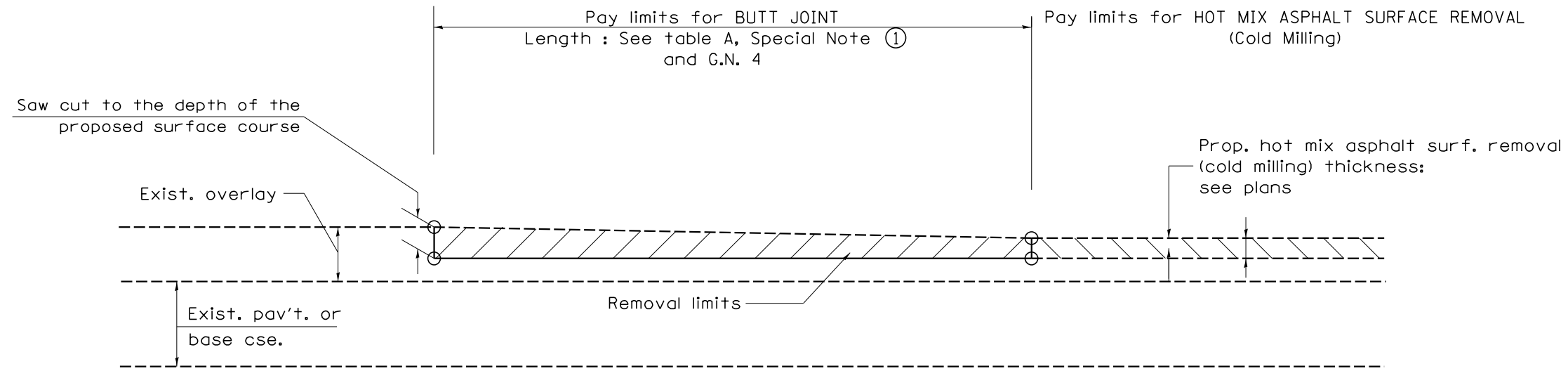
GENERAL NOTES

1. The work shall be done in accordance with Article 406.08 and the Special Provision for Butt Joints.
2. The pavement surface to be removed may be either bituminous or P.C. concrete. The work shall be performed in accordance with Article 440.04 and the Special Provisions for Butt Joints.
3. The saw cut joints shall be primed just prior to the placing of bituminous material. The work will be in accordance with the applicable portions of Article 406.05.
4. The length of butt joint is based on the taper rate times change in cold milling depth within the butt joint pay limits, unless otherwise indicated.

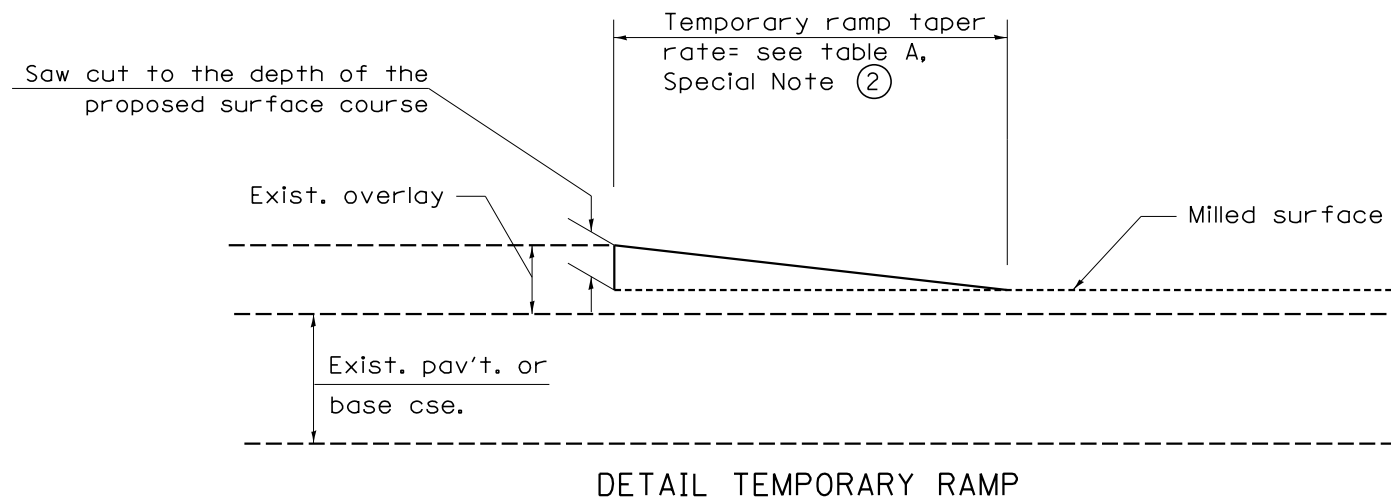


CASE 2 : NO HOT MIX ASPHALT SURFACE REMOVAL (COLD MILLING)

All dimensions are in inches (millimeters) unless otherwise noted.



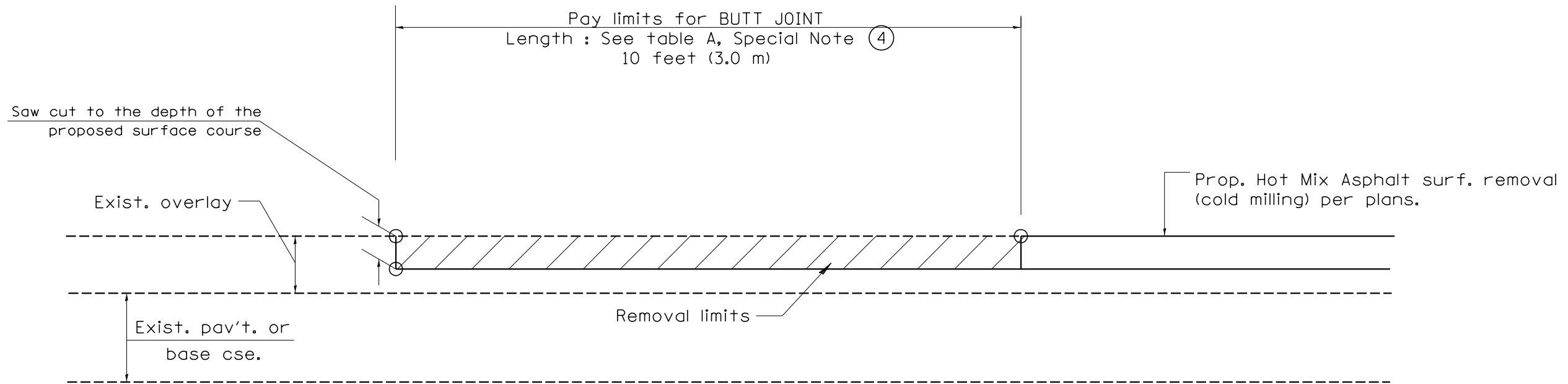
CASE 4 : NO HOT MIX ASPHALT SURFACE REMOVAL (COLD MILLING)
TIE-IN TO EXISTING BITUMINOUS TAPER



DETAIL TEMPORARY RAMP

All dimensions are in inches (millimeters) unless otherwise noted.

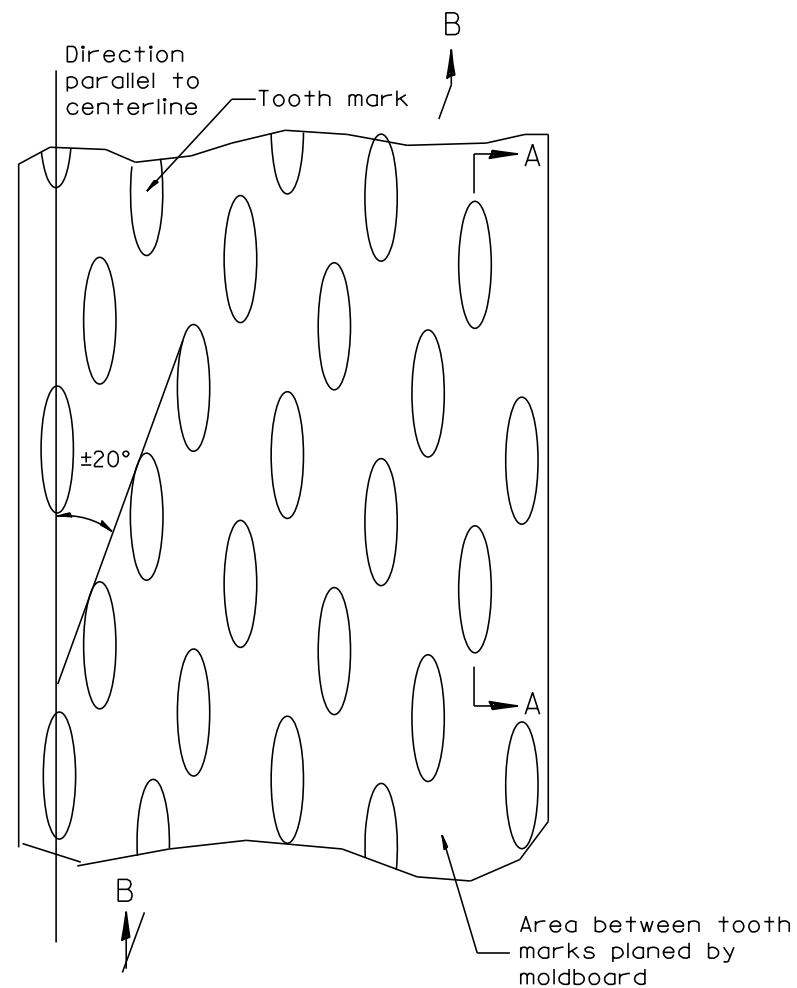
				STATE OF ILLINOIS DEPARTMENT OF TRANSPORTATION	BUTT JOINTS	SHT. 2 OF 3 CADD STD. 406101-D4	<table border="1"> <tr> <th>F.A.P. RTE.</th> <th>SECTION</th> <th>COUNTY</th> <th>TOTAL SHEETS</th> <th>SHEET NO.</th> </tr> <tr> <td>310</td> <td>(104,105)RS-4</td> <td>MERCER</td> <td>32</td> <td>27</td> </tr> <tr> <td colspan="3">FED. ROAD DIST. NO.</td> <td colspan="2">ILLINOIS FED. AID PROJECT</td> </tr> </table>	F.A.P. RTE.	SECTION	COUNTY	TOTAL SHEETS	SHEET NO.	310	(104,105)RS-4	MERCER	32	27	FED. ROAD DIST. NO.			ILLINOIS FED. AID PROJECT	
F.A.P. RTE.	SECTION	COUNTY	TOTAL SHEETS	SHEET NO.																		
310	(104,105)RS-4	MERCER	32	27																		
FED. ROAD DIST. NO.			ILLINOIS FED. AID PROJECT																			
				NOT TO SCALE	CONTRACT NO. 68980																	



CASE 4 : SINGLE LIFT OVERLAY WITH EQUIVALENT DEPTH
HOT MIX ASPHALT SURFACE REMOVAL (COLD MILLING)
TIE-IN TO EXISTING BITUMINOUS TAPER

All dimensions are in inches (millimeters) unless otherwise noted.

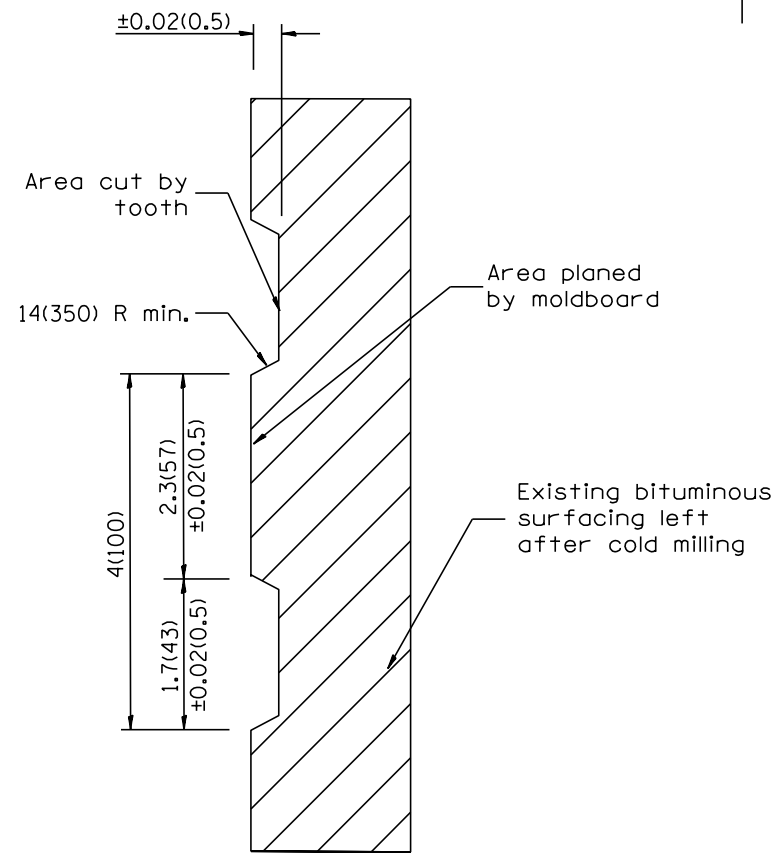
				STATE OF ILLINOIS DEPARTMENT OF TRANSPORTATION	BUTT JOINTS	SHT. 3 OF 3 CADD STD. 406101-D4	<table border="1"> <tr> <th>F.A.P. RTE.</th> <th>SECTION</th> <th>COUNTY</th> <th>TOTAL SHEETS</th> <th>SHEET NO.</th> </tr> <tr> <td>310</td> <td>(104,105)RS-4</td> <td>MERCER</td> <td>32</td> <td>28</td> </tr> <tr> <td colspan="3">FED. ROAD DIST. NO.</td> <td colspan="2">ILLINOIS FED. AID PROJECT</td> </tr> </table>	F.A.P. RTE.	SECTION	COUNTY	TOTAL SHEETS	SHEET NO.	310	(104,105)RS-4	MERCER	32	28	FED. ROAD DIST. NO.			ILLINOIS FED. AID PROJECT	
F.A.P. RTE.	SECTION	COUNTY	TOTAL SHEETS	SHEET NO.																		
310	(104,105)RS-4	MERCER	32	28																		
FED. ROAD DIST. NO.			ILLINOIS FED. AID PROJECT																			
				NOT TO SCALE	CONTRACT NO. 68980																	



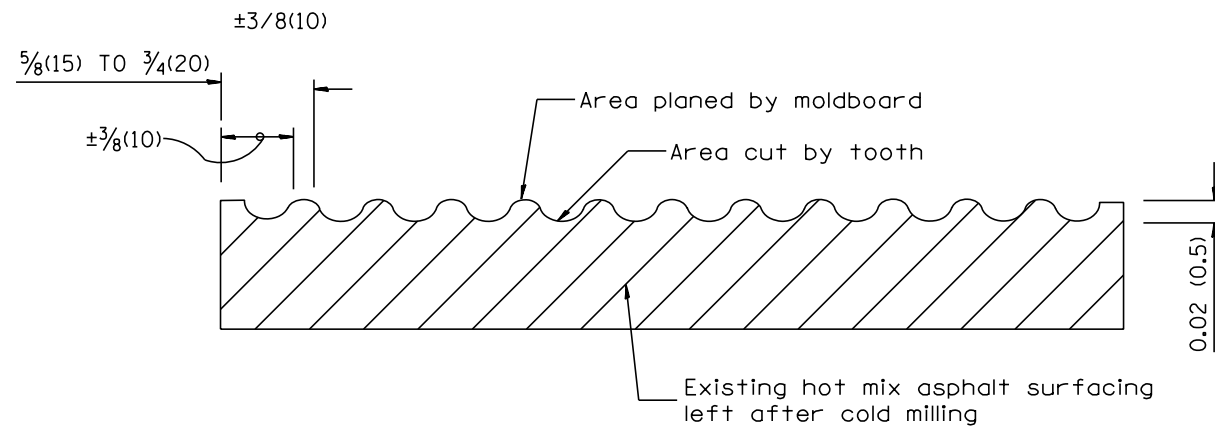
PLAN

General notes:

1. Coldmilling shall consist of two processes: Cutting with carbide teeth mounted on a rotating drum, and planing with a moldboard mounted immediately behind the cutting drum.
2. Other similar patterns will be acceptable if they consist of a smooth, flat, planed surface interspersed with a pattern of discontinuous longitudinal striations.



SECTION A-A



SECTION B-B PROJECTED
PERPENDICULAR TO CENTERLINE

DESIGNER NOTES:
1. INCLUDE DISTRICT SPECIAL PROVISION, IF APPLICABLE.

All dimensions are in inches (millimeters) unless otherwise noted.

01-01-97	RENUM. C-104.01, NEW REVISION BOX	T.P.
04-20-98	REMOVED MILLING DETAIL FROM STANDARD	J.A.
09-08-98	CORRECT NOTE LEADER PLACEMENT	R.W.
10-16-06	REVISED TO 2007 SPEC.	M.A.

STATE OF ILLINOIS
DEPARTMENT OF TRANSPORTATION

HOT MIX ASPHALT SURFACE REMOVAL (COLD MILLING)

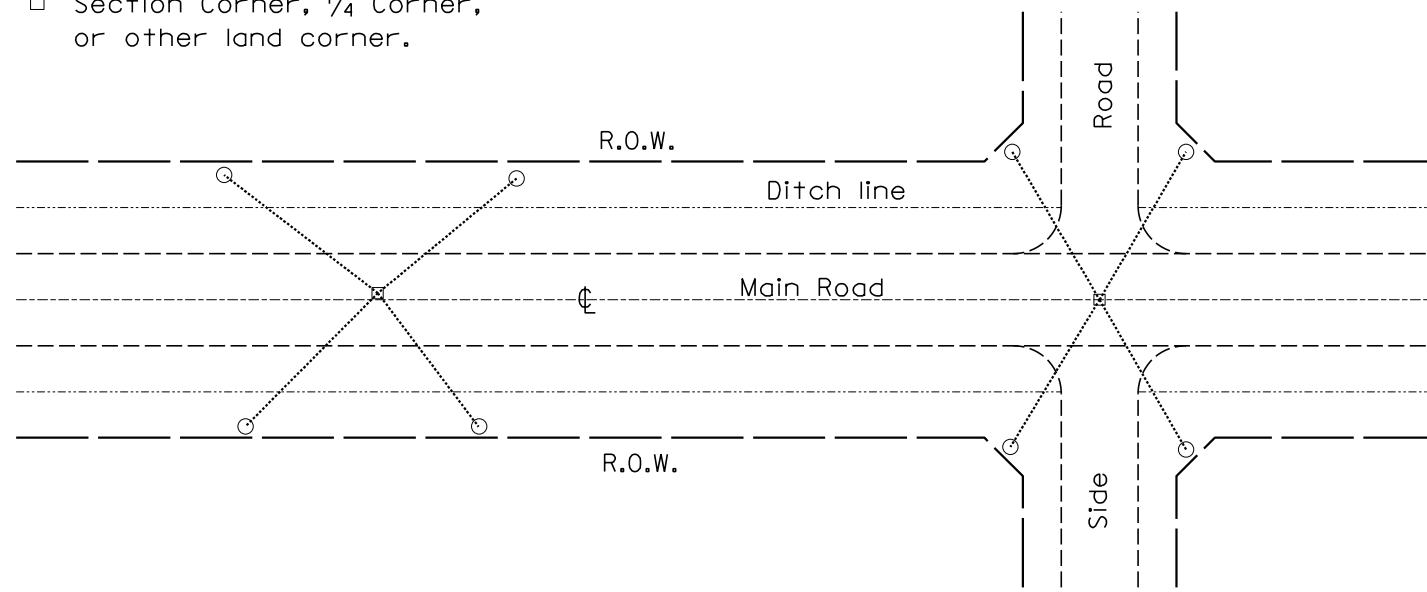
NOT TO SCALE

CADD STD. 440001-D4

F.A.P. RTE.	SECTION	COUNTY	TOTAL SHEETS	SHEET NO.
310	(104,105)RS-4	MERCER	32	29
FED. ROAD DIST. NO. ILLINOIS FED. AID PROJECT			CONTRACT NO. 68980	

PERMANENT SURVEY TIES

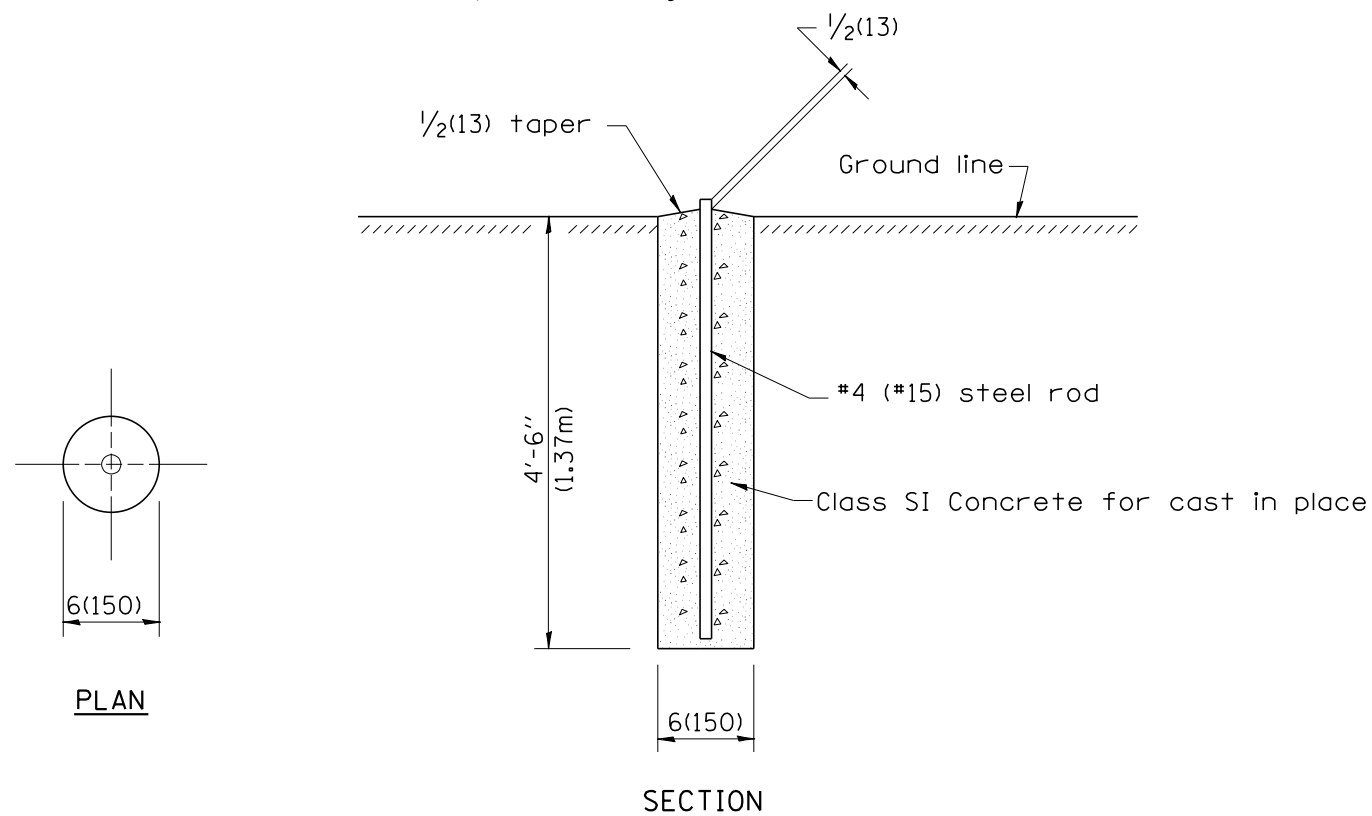
- Permanent Survey Tie
- Section Corner, 1/4 Corner, or other land corner.



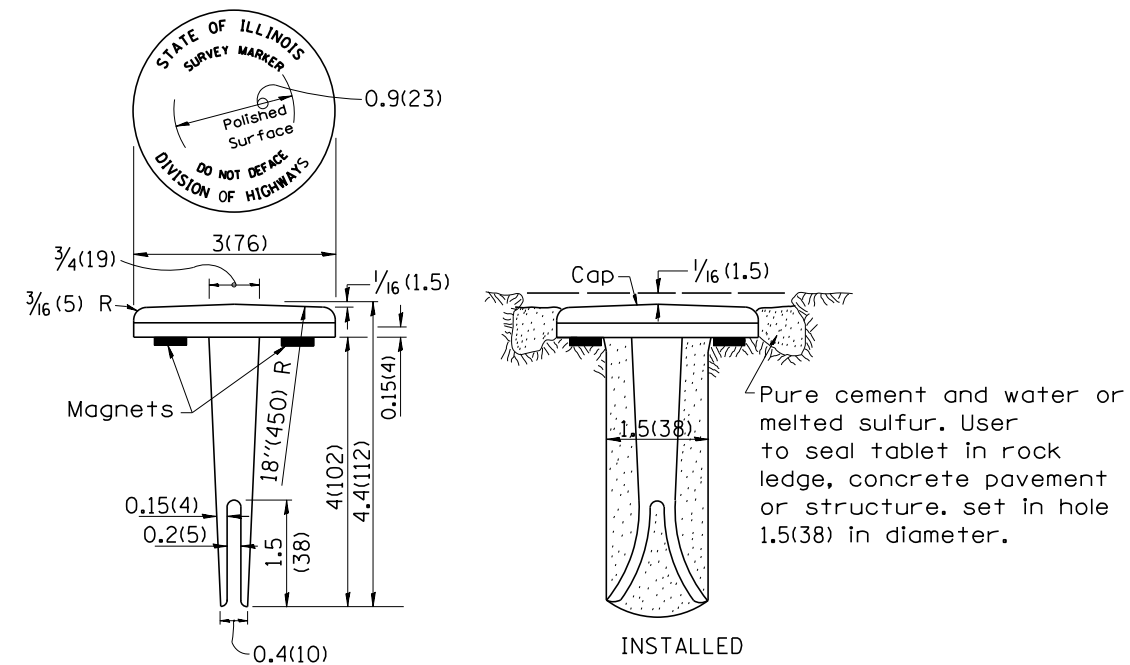
TYPICAL APPLICATION

GENERAL NOTES

1. The marker shall be cast in place of Class SI Concrete.
2. Tie marker shall be installed after the final seeding has been completed unless otherwise specified by the Engineer.
3. The tie distances to the section corner shall be measured and recorded by the surveyor setting the PSM. All ties shall be turned over to the IDOT Chief of Surveys or Chief of Plats for recordation.
4. All documentation shall be performed by a PLS



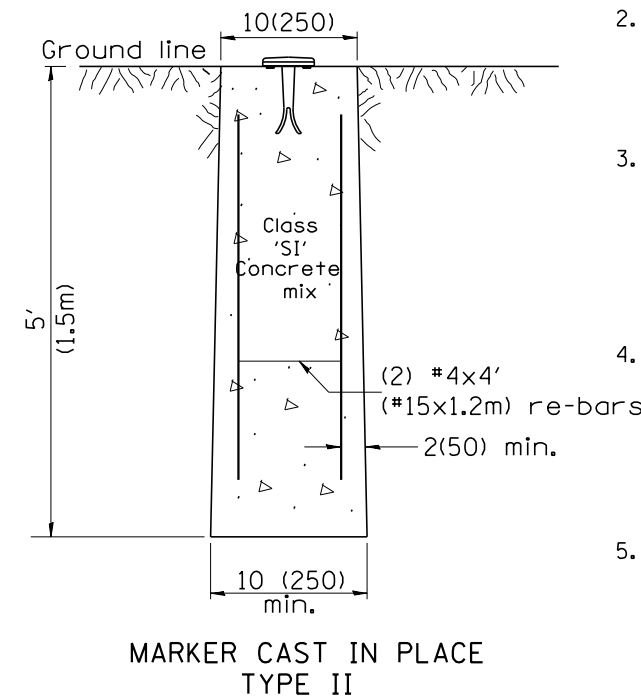
PERMANENT SURVEY MARKERS



TYPE I

GENERAL NOTES

1. All type II markers shall be cast in place, and precast markers will not be allowed.
2. Two permanent magnets, each having a diameter of 3/4 (19) and a thickness of 1/4 (6), or equivalent, shall be attached to the underside of the tablet with an approved epoxy bonding agent.
3. The location of the markers shall be in accordance with the plans in general, the markers will be placed at the P.T.'s, P.C.'s, and P.I.'s located within the R.O.W. of horizontal curves and spaces along the tangents in a way that a minimum of two markers are always inter-visible, and not to exceed 1000' (300m).
4. The markers shall be placed under the direction of the Engineer and shall be installed in a workmanlike manner in order that there will be no further settlement or horizontal shifting. The monuments shall be placed in a way that the survey point will fall within the portion of the plaque provided for that purpose.
5. The project designation, the centerline station, the survey point, and the elevation shall be permanently marked by the use of metal dies after marker has been installed.



MARKER CAST IN PLACE TYPE II

All dimensions are in inches (millimeters) unless otherwise noted.

DESIGNER NOTES:
 1. ADD DISTRICT SPECIAL PROVISION IF PLACING A TYPE I MARKER ON A STRUCTURE.
 2. MODIFIES STATE STD 667101. DON'T USE STATE STD IF USING CADD STANDARD
 3. PERMANENT SURVEY MARKERS SHALL BE PLACED TO PERPETUATE THE SURVEY LINES OF DIVIDED HIGHWAYS AND THE CENTERLINE OF ALL OTHERS WHERE THESE LINES HAVE BEEN ESTABLISHED BY SURVEY.
 4. PERMANENT SURVEY MARKERS SHALL BE PLACED AT ALL LAND SECTION CORNERS WITHIN THE STATE R.O.W. WHERE THE MONUMENTS HAVE BEEN FOUND OR RELOCATED BY SURVEY.

01-01-97	RENUM. D-3.01, NEW REVISION BOX, REVISED	T.P.	10-16-06	REVISED TO 2007 SPEC.	M.A.
	TITLE BOX, ADD DESIGNER NOTE		01-04-11	REVISED FOR CORRECTIONS	R.D.
07-07-98	ADD DESIGNER NOTE	J.A.	08-21-13	CHANGED MIN. DIAMETER	R.D.
05-24-06	REMOVED GEN. NOTE UNDER TIES	M.A.			

**STATE OF ILLINOIS
DEPARTMENT OF TRANSPORTATION**

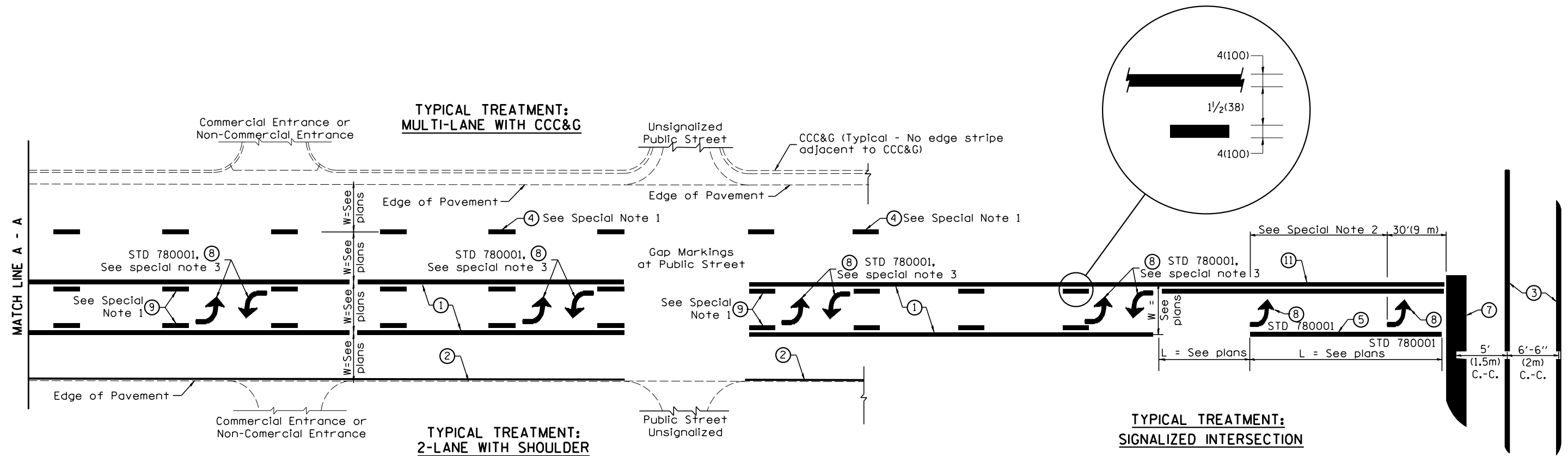
NOT TO SCALE

**PERMANENT SURVEY TIE &
PERMANENT SURVEY MARKERS TY.I - TY.II**

CADD STD. 667101-D4

F.A.P. RTE.	SECTION	COUNTY	TOTAL SHEETS	SHEET NO.
310	(104,105)RS-4	MERCER	32	30
CONTRACT NO. 68980				
FED. ROAD DIST. NO. ILLINOIS FED. AID PROJECT				

DESIGNER NOTES:
1. Include State Standard 780001 (Typical Pavement Markings)



FLUSH PAVED MEDIAN: TWO-WAY LEFT TURN LANE WITH ONE-WAY LEFT TURN LANE AT SIGNALIZED INTERSECTION

TYPICAL PAVEMENT MARKING LEGEND

(Note: This is a District Standard Legend. Some elements may not apply to specific project.)

- ① 4(100) Solid (Yellow)
- ② 4(100) Solid (White)
- ③ 2-6(150) Crosswalk @ 6'-6" (2m)min C.-C. (White)
2-8(200) Crosswalk @ 6'-6" (2m)min C.-C. (White) (When traffic signals are present.)
- ④ 6(150) Skip-Dash (White) (See Special Note 1)
- ⑤ 8(200) Solid (White)
- ⑥ 12(300) Diagonal (White) (Item ⑥ is shown on Std. 780001)
- ⑦ 24(600) Stop Bar (White)
- ⑧ Letters & Arrows (See Std. 780001 and Special Notes 2 & 3)
- ⑨ 4(100) Skip-Dash (Yellow) (See Special Note 1)
- ⑩ 12(300) Diagonal (Yellow) (See Table A) (See Table A)
- ⑪ 4(100) Double Solid (Yellow) (See Table A)

SPECIAL NOTES

1. Skip-Dash markings will be centered between both ends of city blocks and shall be placed in alignment transversely across the pavement.
2. The following shall apply to arrows located in one-way left turn lanes:
 - A. A minimum of two (2) arrows is required.
 - B. The maximum spacing between arrows is 80' (24 m).
 - C. Arrows shall be evenly spaced if three (3) or more are required.
3. The following shall apply to arrow pairs located in two-way left turn lanes:
 - A. A minimum of two (2) arrow pairs is required.
 - B. The maximum spacing between arrow pairs is 200' (61 m).
 - C. Arrow pairs shall be evenly spaced if three (3) or more are required.
 - D. The spacing between Bi Directional Left Turn Arrows is 33' (10 m).

GENERAL NOTES

1. Refer to State Standard 780001 for additional Pavement Markings including letters & arrows.
2. See Plans for Pavement Markings adjacent to curbed islands and medians, and through lane reductions.

01-01-97	RENUM. F-8.03, NEW REVISION BOX	T.P.	10-16-06	REVISED TO 2007 SPEC.
02-07-97	ADD BI DIRECTIONAL DIMENSION	J.A.		
10-97	CORRECT BI DIRECTIONAL DIMENSION	J.A.		
08-02	ADD CROSSWALK DMNS. WITH T.S.	M.A.		

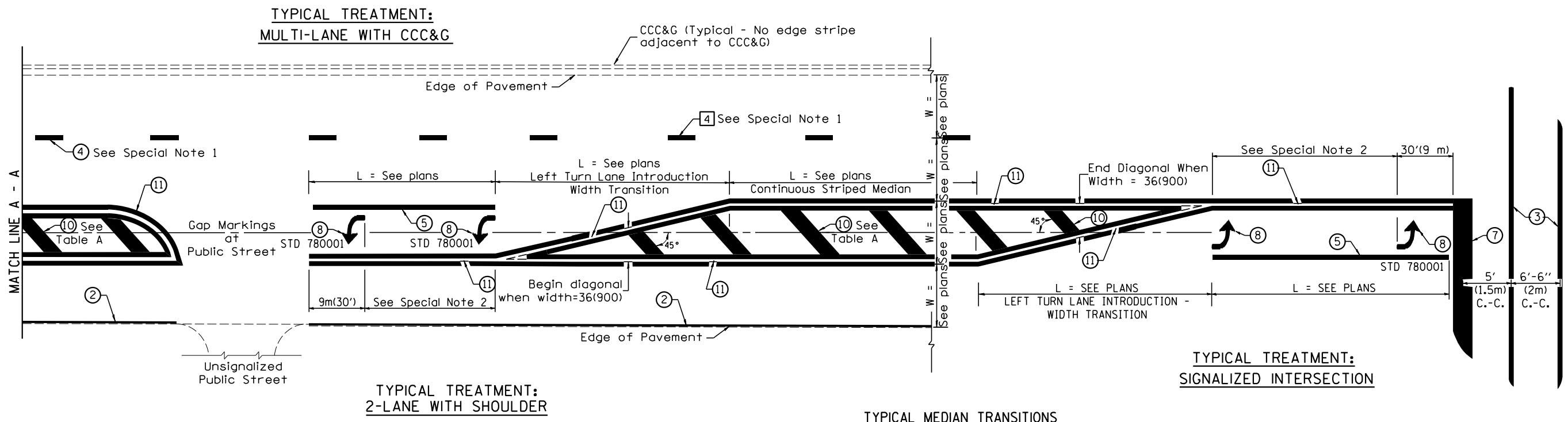
**STATE OF ILLINOIS
DEPARTMENT OF TRANSPORTATION**

NOT TO SCALE

TYPICAL PAVEMENT MARKINGS

SHT. 1 OF 2
CADD STD. 780001-D4

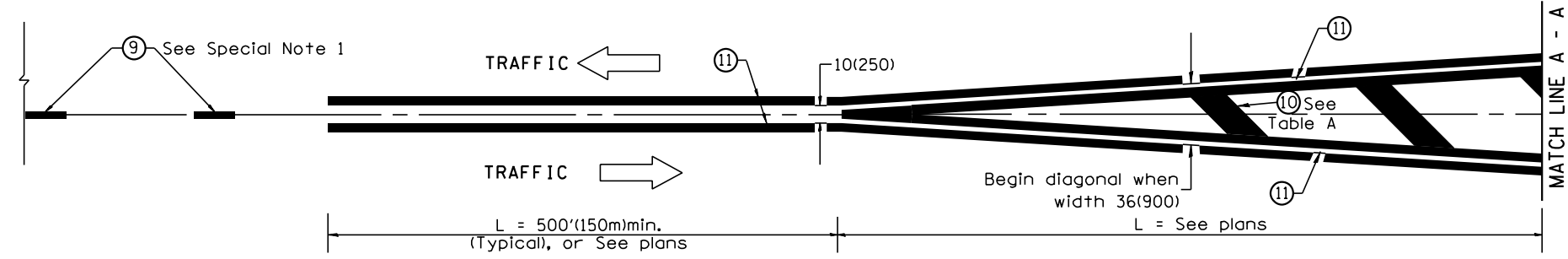
F.A.P. RTE.	SECTION	COUNTY	TOTAL SHEETS	SHEET NO.
310	(104,105)RS-4	MERCER	32	31
CONTRACT NO. 68980				
FED. ROAD DIST. NO. ILLINOIS FED. AID PROJECT				



FLUSH PAVED MEDIAN: RESTRICTED LEFT TURN LANE

TABLE A
RECOMMENDED SPACING BETWEEN DIAGONAL LINES

SPEED LIMIT RANGE	INTERSECTION CHANNELIZATION (Includes Width Transitions for Median and Left Turn Lane Introductions)	
	CONTINUOUS	
Less Than 30 mph (50 km/h)	50' (15m)	15' (5m)
30 - 45 mph (50 - 70 km/h)	75' (23m)	20' (6m)
Over 45 mph (70 km/h)	150' (46m)	30' (9m)



MEDIAN INTRODUCTION - WIDTH TRANSITIONS

All dimensions are in inches (millimeters) unless otherwise noted.