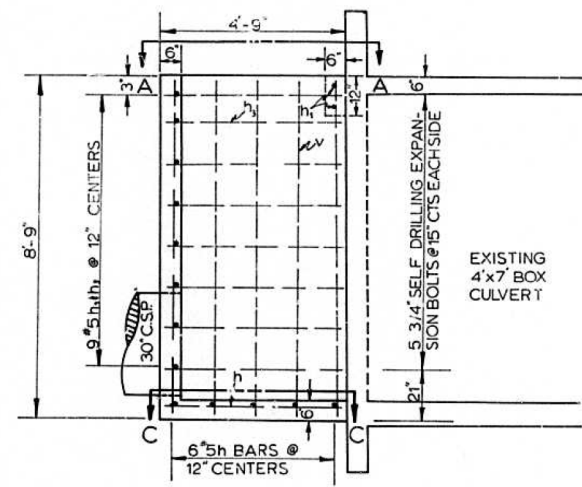
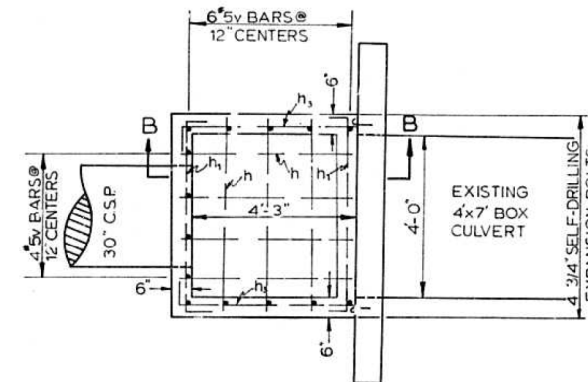


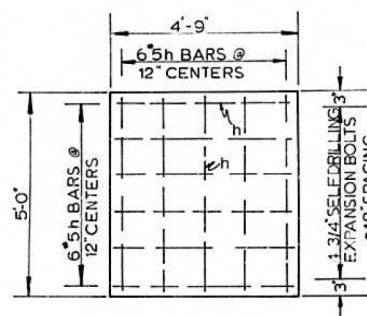
FOR INFORMATION ONLY



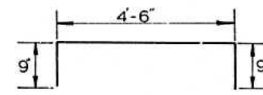
SECTION B-B



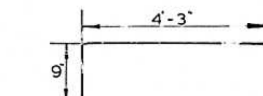
SECTION A-A



SECTION C-C



#5 h₁ - BAR

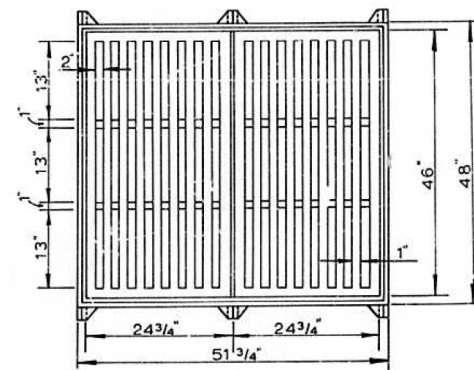


#5 h₂ - BAR

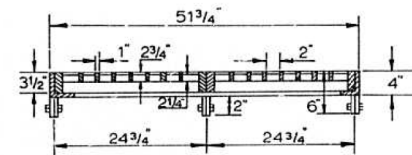
BILL OF MATERIALS

| BAR NO | SIZE | LENGTH | SHAPE | TOTAL WT. |
|----------------------|------|--------|-------|---------------|
| a | 4 | 5 | 3'-3" | 13.6 |
| h | 12 | 5 | 4'-6" | 56.3 |
| h ₁ | 11 | 5 | 6'-0" | 68.8 |
| h ₂ | 18 | 5 | 5'-0" | 93.9 |
| v | 16 | 5 | 8'-6" | 141.8 |
| REINFORCEMENT BARS | | | | TOTAL 374 LBS |
| 3/4" EXPANSION BOLTS | | | | 18 EACH |
| CLASS 'X' CONCRETE | | | | 1.7 CU YD |

NOTE: 4 a BARS TO BE PLACED DIAGONALLY AROUND OPENING FOR 30° C.S.P. INSIDE FACE.



TOP VIEW



SIDE VIEW

NOTE: IN 2001, THE EXISTING 4.75 FT X 5.0 FT DROP BOX AS DETAILED ON THIS PAGE WAS EXTENDED VERTICALLY 2.19 FT. TO AN ELEVATION OF 756.00.

| | | | |
|---|------------------------------|----------------|-----------|
| FILE NAME = | USER NAME = aubreys | DESIGNED - KJH | REVISED - |
| Farmington Culvert Repair Plan - Revisions due to Cattle Farmer Stubbornness April 2014 | DRAWN - JGJ | REVISED - | |
| Default | PLOT SCALE = 100.0000' / in. | CHECKED - KJH | REVISED - |
| | PLOT DATE = 4/2/2014 | DATE - | REVISED - |

STATE OF ILLINOIS
DEPARTMENT OF TRANSPORTATION

EXISTING DROP BOX DETAIL
(FOR INFORMATION ONLY)

SCALE: SHEET OF SHEETS STA. TO STA.

| F.A.P. RTE. | SECTION | COUNTY | TOTAL SHEETS | SHEET NO. |
|---------------------------|---------|--------|--------------|-----------|
| 669 | 17CR | PEORIA | 20 | 13 |
| CONTRACT NO. 68B27 | | | | |
| ILLINOIS FED. AID PROJECT | | | | |