

STATE OF ILLINOIS
DEPARTMENT OF TRANSPORTATION
DIVISION OF HIGHWAYS
PROPOSED
HIGHWAY PLANS

FOR INDEX OF SHEETS, SEE SHEET NO. 2

HIGHWAY STANDARDS

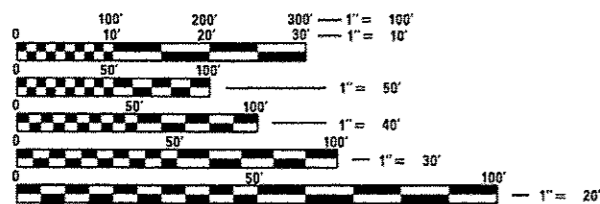
280001-07
 542301-03

602411-04
 602701-02

701001-02
 701006-05
 701201-04
 701301-04
 701901-03

ADT = 7050 (2011)
 %SU = 2.1%
 %MU = 2.5%

FUNCTIONAL CLASSIFICATION
 MINOR ARTERIAL



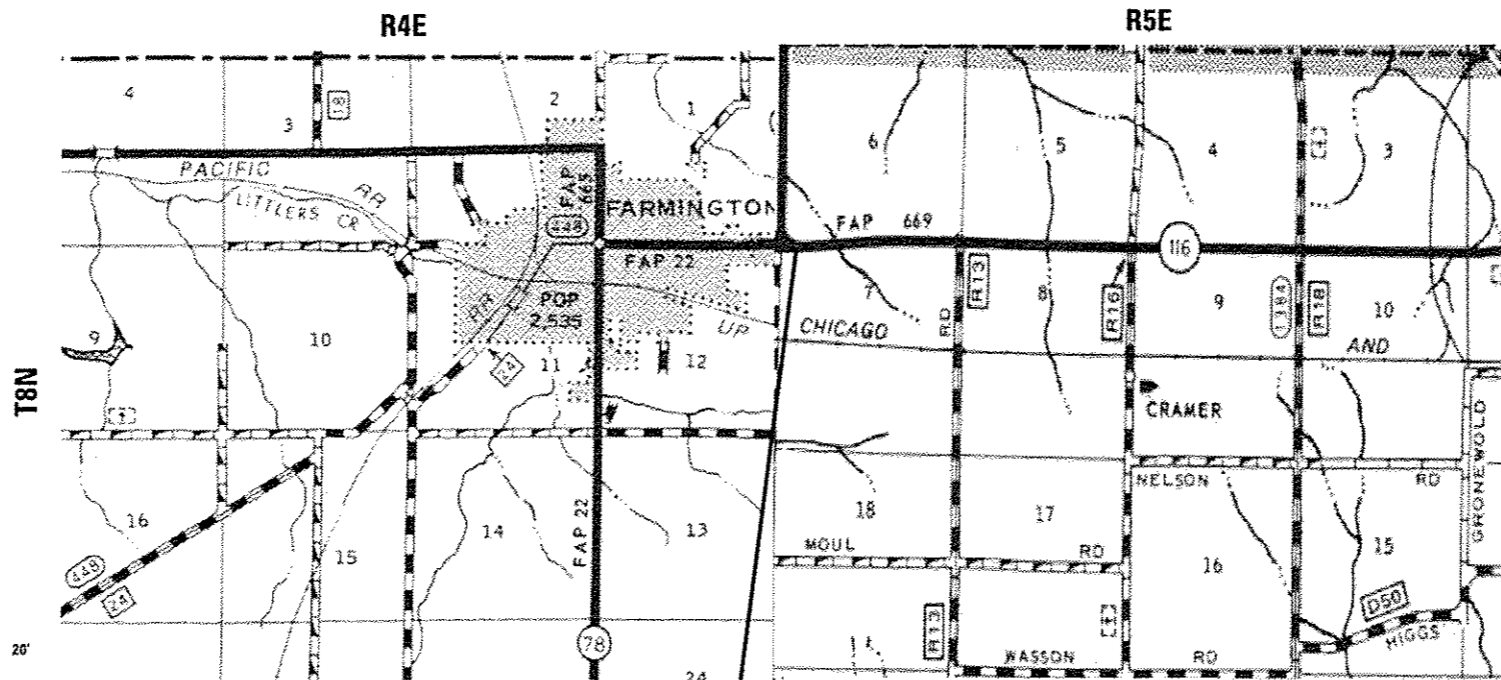
FULL SIZE PLANS HAVE BEEN PREPARED USING STANDARD ENGINEERING SCALES. REDUCED SIZED PLANS WILL NOT CONFORM TO STANDARD SCALES. IN MAKING MEASUREMENTS ON REDUCED PLANS, THE ABOVE SCALES MAY BE USED.

J.U.L.I.E.
 JOINT UTILITY LOCATION INFORMATION FOR EXCAVATION
 1-800-892-0123
 OR 811

PROJECT ENGINEER RICH DOTSON (309) 671-3455
 PROJECT MANAGER KEVIN HORST (309) 671-3472

CATALOG NO. 034893-00D
 CONTRACT NO. 68B27

FAP ROUTE 669 (IL 116)
 SECTION 17CR
 CONTRACT MAINTENANCE
 PEORIA COUNTY
 C-94-020-13



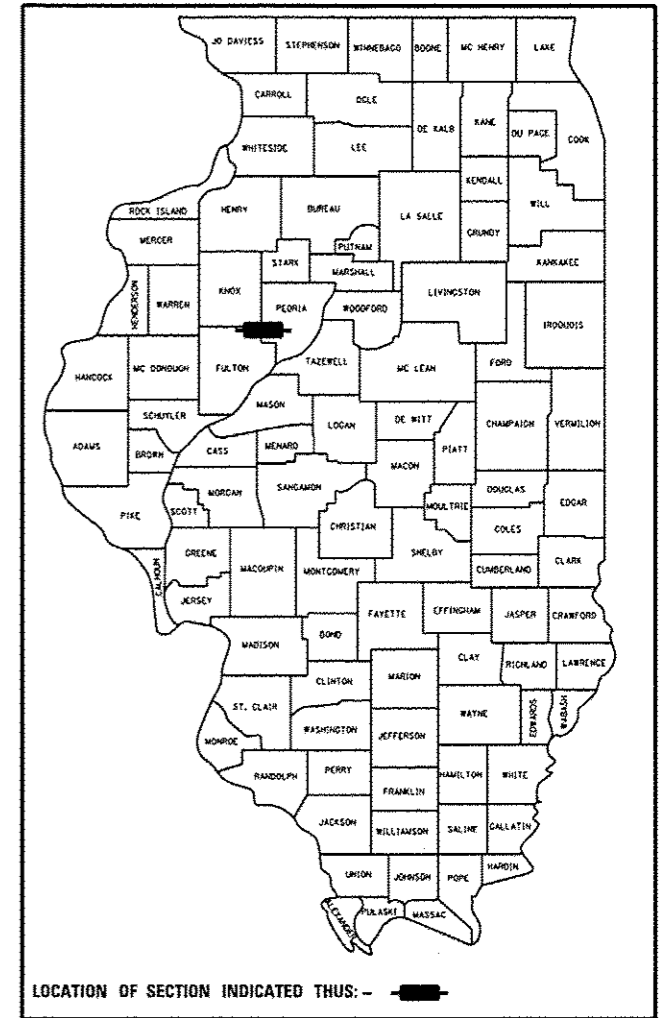
FILL EXISTING CULVERT STA. 21+05
 INSTALL NEW CULVERT STA. 21+23.5

IMPROVEMENT BEGINS STA. 21+05.00
 IMPROVEMENT ENDS STA. 21+ 28.30

GROSS LENGTH = 23.30 FT. = 0.004 MILE
 NET LENGTH = 23.30 FT. = 0.004 MILE

F.A.P. RTE.	SECTION	COUNTY	TOTAL SHEETS	SHEET NO.
669	17CR	PEORIA	* 20	1
		ILLINOIS	CONTRACT NO. 68B27	

* 20-3 = 17 TOTAL SHEETS
 D-94-009-13



THIS PROJECT INCLUDES FILLING AN EXISTING CULVERT AND JACKING A NEW CULVERT BESIDE THE EXISTING CULVERT. ALSO INCLUDED ARE ONE DRAINAGE STRUCTURE AND AN INSERTION CULVERT LINER.

STATE OF ILLINOIS
 DEPARTMENT OF TRANSPORTATION
 DIVISION OF HIGHWAYS

SUBMITTED Feb 5th 20 14
Stephen E. Cowley
 DEPUTY DIRECTOR OF HIGHWAYS, REGION ENGINEER

March 21 20 14
John D. Baranzelli, P.E.
 ENGINEER OF DESIGN AND ENVIRONMENT

March 21 20 14
Omer Osman, P.E.
 DIRECTOR OF HIGHWAYS, CHIEF ENGINEER

**PRINTED BY THE AUTHORITY
 OF THE STATE OF ILLINOIS**