

STATE OF ILLINOIS  
DEPARTMENT OF TRANSPORTATION  
DIVISION OF HIGHWAYS

**PROPOSED  
HIGHWAY PLANS**

F.A.P. ROUTE 317 (US 24)  
SECTION 17-1-1  
D4 SLOPE STABILIZATION 2014  
TAZEWELL COUNTY

C-94-047-13

F.A.P. RTE.	SECTION	COUNTY	TOTAL SHEETS	SHEET NO.
317	17-1-1	TAZEWELL	16	1
		ILLINOIS	CONTRACT NO. 68B41	

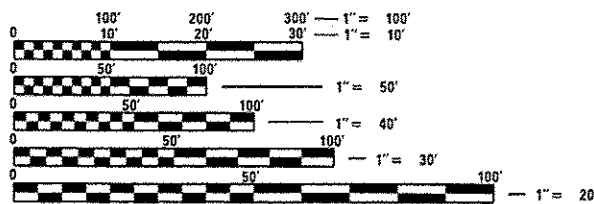
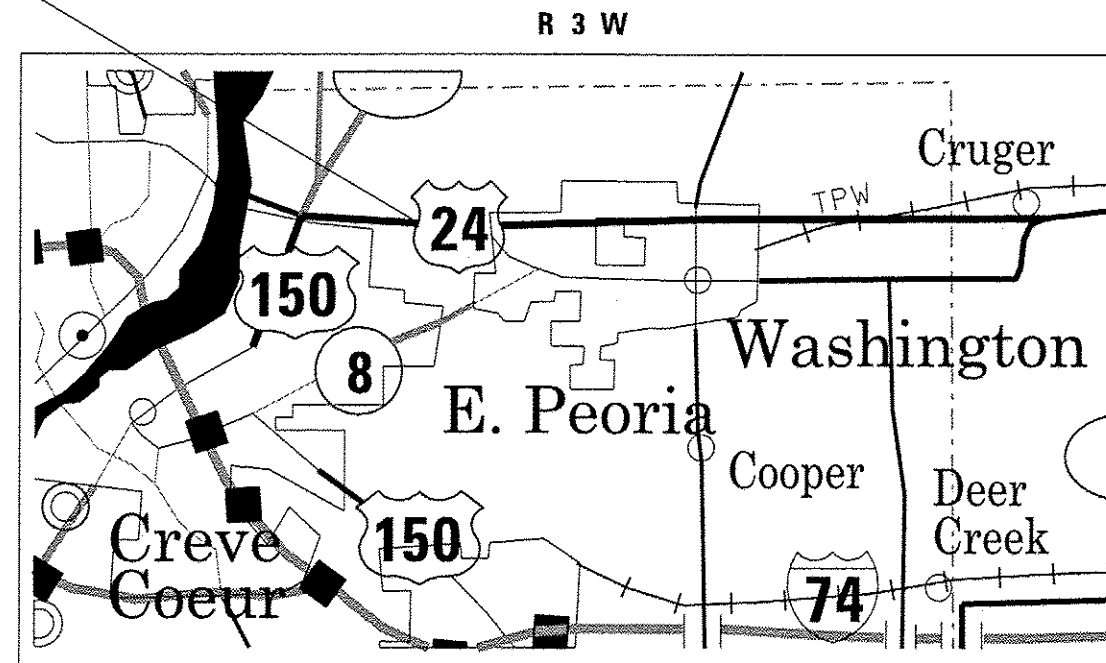
INDEX OF SHEETS

1. COVER SHEET
2. GENERAL NOTES/COMMITMENTS/JOB SPECIFIC NOTES
3. SUMMARY OF QUANTITIES
4. SCHEDULE OF QUANTITIES
5. PROPOSED PLAN
- 6-16. CROSS SECTIONS

STANDARDS

630001-10  
701101-04  
701421-06  
701901-03

PROJECT LOCATION



FULL SIZE PLANS HAVE BEEN PREPARED USING STANDARD ENGINEERING SCALES. REDUCED SIZED PLANS WILL NOT CONFORM TO STANDARD SCALES. IN MAKING MEASUREMENTS ON REDUCED PLANS, THE ABOVE SCALES MAY BE USED.

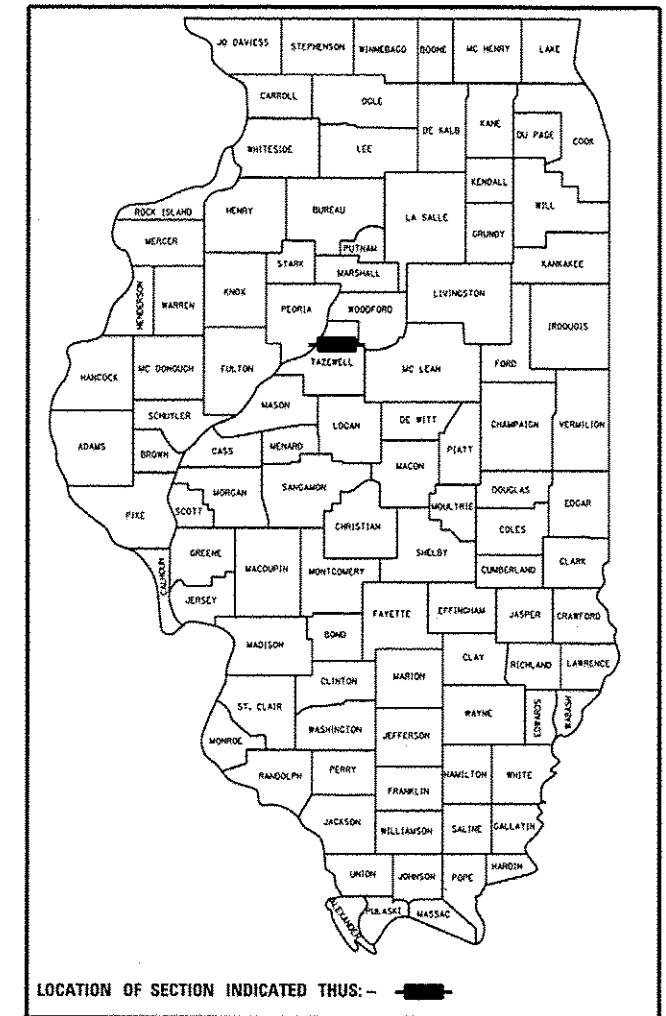
J.U.L.I.E.  
JOINT UTILITY LOCATION INFORMATION FOR EXCAVATION  
1-800-892-0123  
OR 811

PROJECT DESCRIPTION:

THIS PROJECT CONSISTS OF SLOPE STABILIZATION ALONG US 24 WEST OF HOLLANDS GROVE ROAD NEAR WASHINGTON IN TAZEWELL COUNTY.

GROSS LENGTH = N/A  
NET LENGTH = N/A

PROJECT ENGINEER: CHRISTOPHER MAUSHARD (309)671-3477  
PROJECT MANAGER: DAVID LAYNE (309)671-3477  
CONTRACT NO. 68B41  
CATALOG NO. 034919-00D



STATE OF ILLINOIS  
DEPARTMENT OF TRANSPORTATION  
DIVISION OF HIGHWAYS

SUBMITTED Feb 4 20 14  
Joseph Chovan  
DEPUTY DIRECTOR OF HIGHWAYS, REGION ENGINEER

March 21 20 14  
John D. Baranzelli, P.E.  
ENGINEER OF DESIGN AND ENVIRONMENT

March 21 20 14  
Omer Osman, P.E.  
DIRECTOR OF HIGHWAYS, CHIEF ENGINEER

PRINTED BY THE AUTHORITY  
OF THE STATE OF ILLINOIS