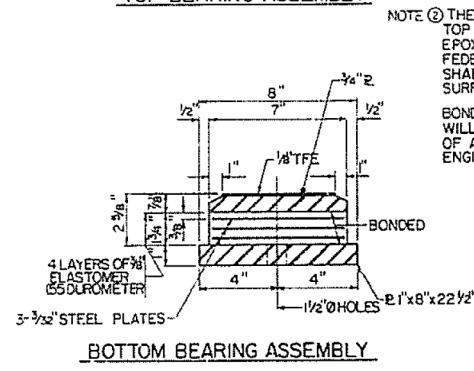
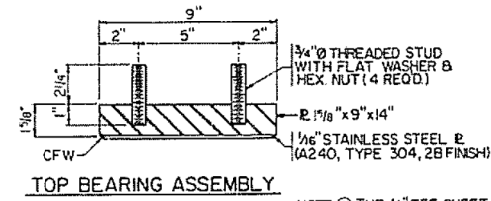
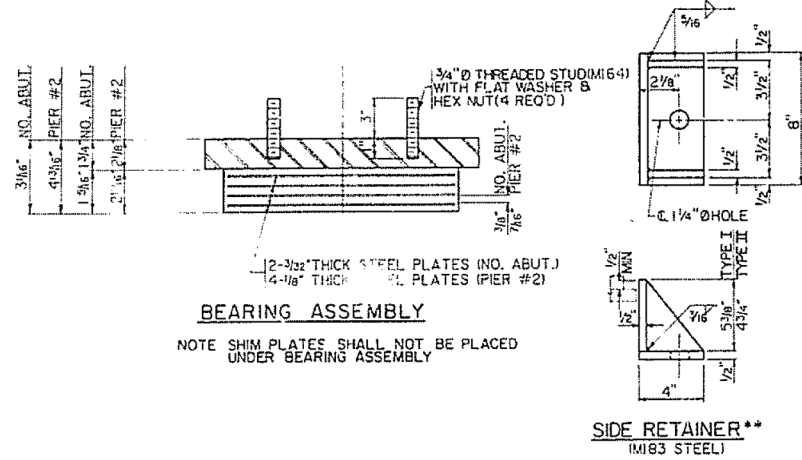
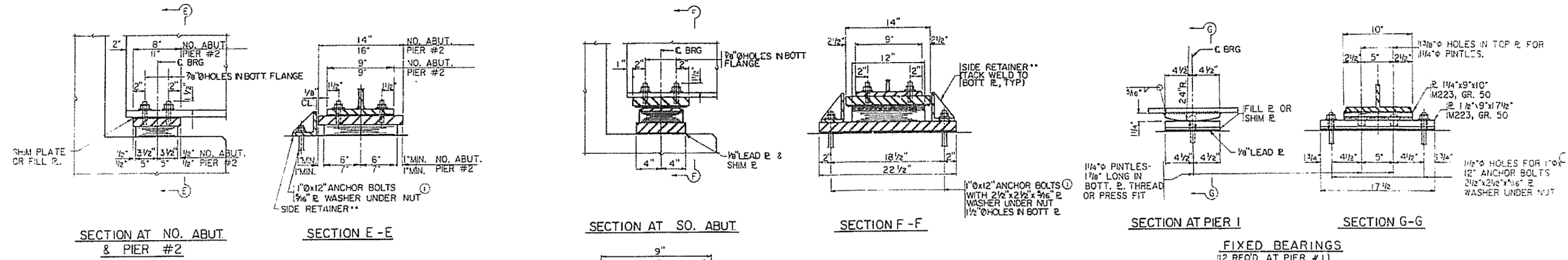


LOC.3&4 S.N. 090-0125 & 0126



NOTE ② THE 1/8" TFE SHEET SHALL BE BONDED DIRECTLY TO THE TOP STEEL PLATE WITH A TWO-COMPONENT, MEDIUM VISCOSITY EPOXY RESIN, CONFORMING TO THE REQUIREMENTS OF THE FEDERAL SPEC MMM-A-134, TYPE I. THE BOND AGENT SHALL BE APPLIED ON THE FULL AREA OF THE CONTACT SURFACES

BONDING OF 1/8" TFE SHEET DURING VULCANIZING PROCESS WILL BE PERMITTED PROVIDED THE PROCESS AND METHOD OF ADJUSTING ASSEMBLY HEIGHT IS APPROVED BY THE ENGINEER.

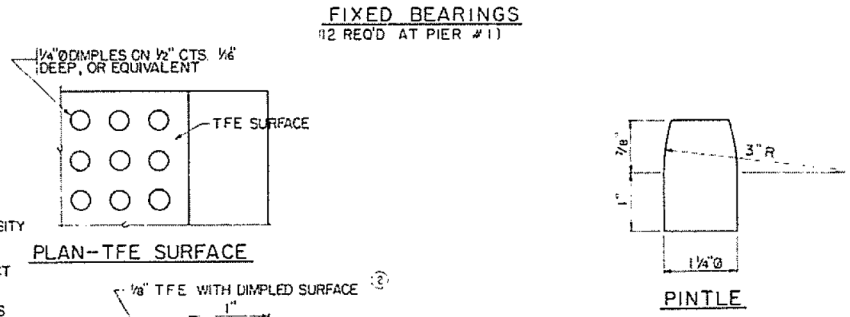


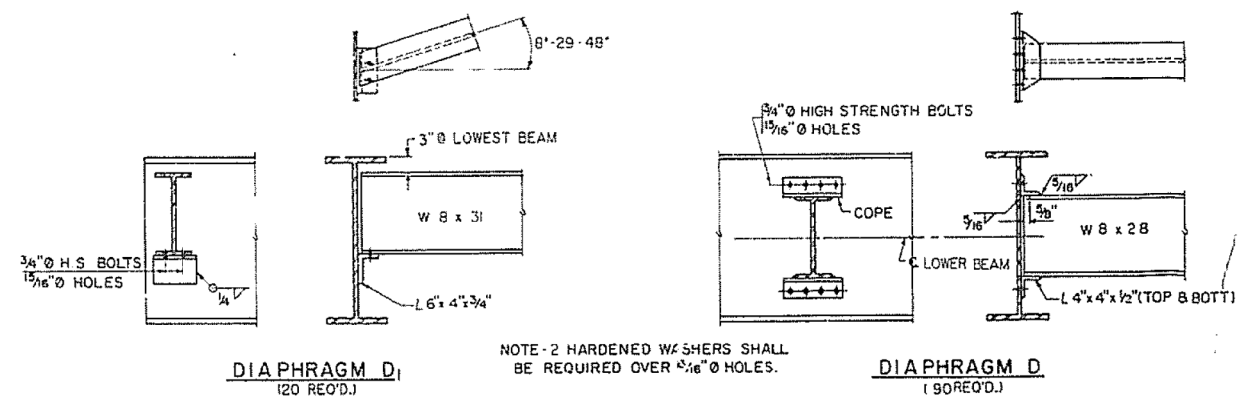
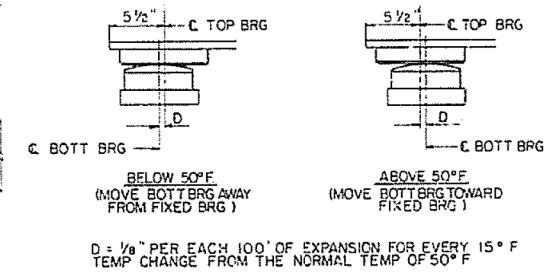
TABLE OF REQUIRED FILL PLATES

BEAM	PIER NO.1	PIER NO.2
G	17 1/2" x 9" x 1/2"	11" x 9" x 3/4"
I	17 1/2" x 9" x 1/2"	11" x 9" x 1/2"

TYPE I ELASTOMERIC EXPANSION BEARING
 (1/2 REQ'D AT NO. ABUTMENT)
 (1/2 REQ'D AT PIER #2)

TYPE II TFE ELASTOMERIC EXPANSION BEARING
 (1/2 REQ'D AT SO. ABUTMENT)

**SIDE RETAINERS TO BE USED AT INSIDE FACE OF EXTERIOR STRINGERS ONLY (TYPE I) AND AT EACH FACE OF EACH STRINGER (TYPE II). EQUIVALENT ROLLED ANGLE WITH STIFFENERS WILL BE ALLOWED IN LIEU OF WELDED PLATES.



NOTE - 2 HARDENED W/ WASHERS SHALL BE REQUIRED OVER 1/2" Ø HOLES.

DIAPHRAGMS D AND D1 AND CONNECTION ANGLES SHALL BE M183 STEEL.

