

F.A. RTE.	SECTION	COUNTY	TOTAL SHEETS	SHEET NO.
VAR	D4 BRIDGE METALIZING	VARIOUS	23	1
		ILLINOIS	CONTRACT NO. 68B49	

FOR INDEX OF SHEETS, SEE SHEET NO. 1
 2. LOCATION MAPS
 3-4 SUMMARY OF QUANTITIES
 5. COMMITMENTS AND GENERAL NOTES
 6-23 PLAN DETAILS LOCATIONS 1-8

STATE OF ILLINOIS
 DEPARTMENT OF TRANSPORTATION
 DIVISION OF HIGHWAYS

04-25-14 LETTING ITEM 040

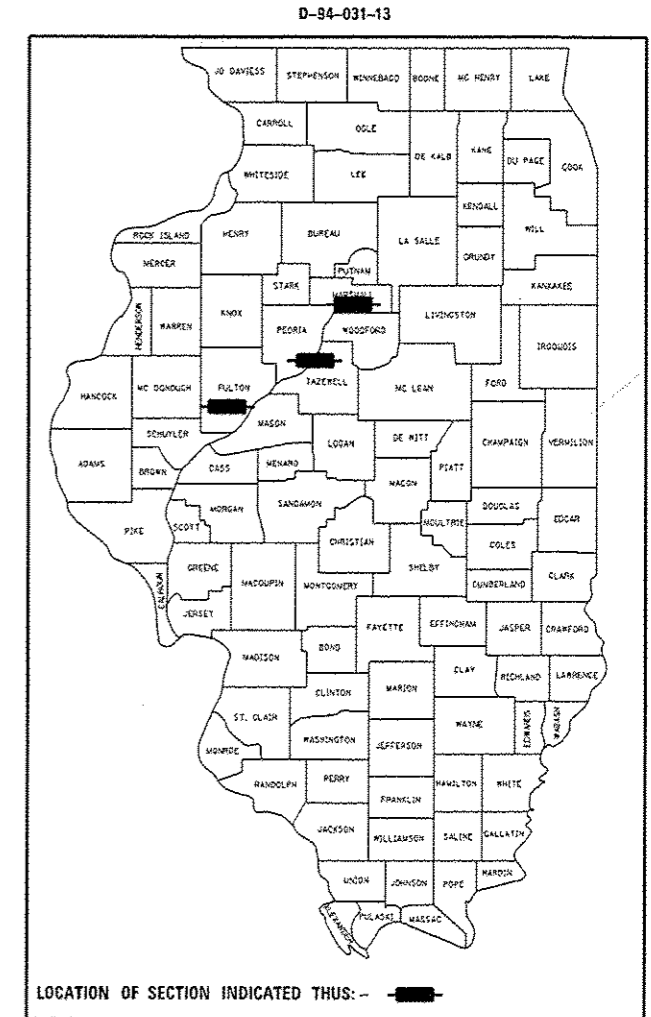
**PROPOSED
 HIGHWAY PLANS**

HIGHWAY STANDARDS
 701006 - 05
 701101 - 04
 701106 - 02
 701201 - 04
 701406 - 08
 701411 - 08
 701421 - 06
 701456 - 03
 701901 - 03

VARIOUS ROUTE
 SECTION D4 BRIDGE METALIZING 2014

TYPE of IMPROVEMENT METALIZING BEAM ENDS
 VARIOUS COUNTIES

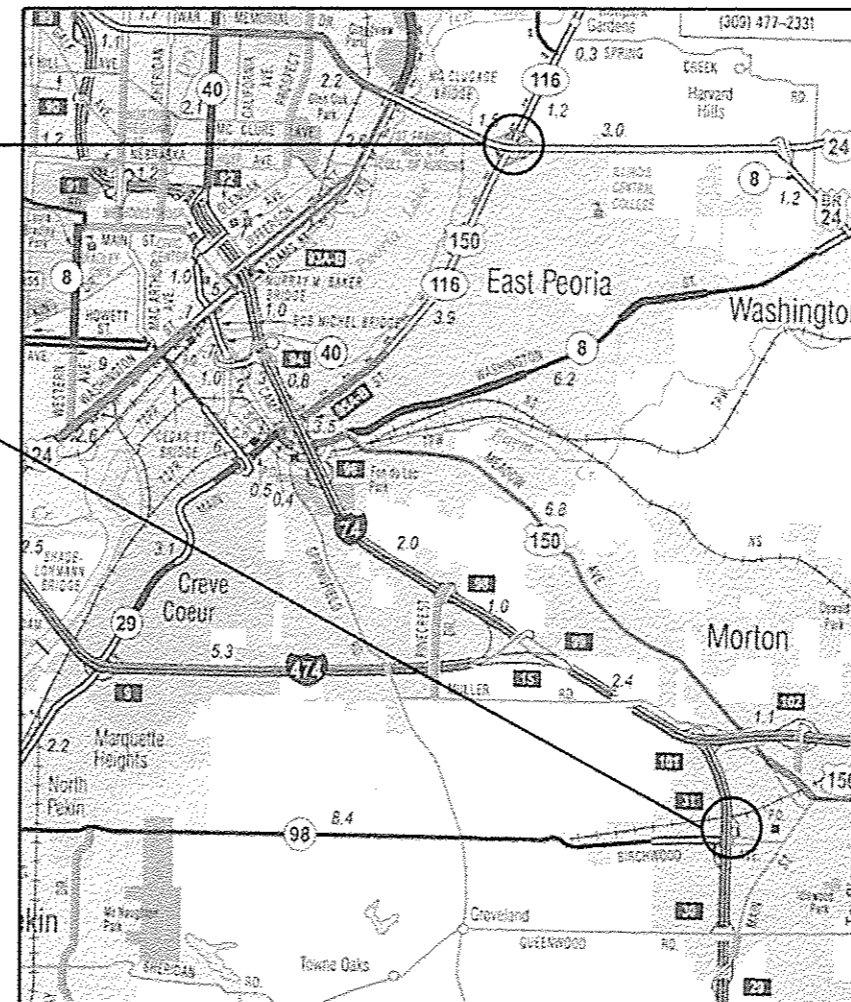
C-94-056-13



S.N. 029-0012
 AADT 5250 YR 2013
 MU 525 YR 2013
 SU 200 YR 2013
 S.N. 062-0038
 AADT 1700 YR 2013
 MU 150 YR 2013
 SU 80 YR 2013
 S.N. 072-0160
 AADT 1800 YR 2013
 MU 70 YR 2013
 SU 40 YR 2013
 S.N. 090-0071 & 0072
 AADT 27,600 YR 2013
 MU 550 YR 2013
 SU 525 YR 2013
 S.N. 090-0125 & 0126
 AADT 20,200 YR 2013
 MU 2350 YR 2013
 SU 1550 YR 2013
 S.N. 090-0127 RAMP
 AADT 3500 YR 2010
 MU 175 YR 2010
 SU 150 YR 2010

LOCATION 1 & 2
 S.N. 090-0071 & 72

LOCATION 3,4 & 5
 S.N. 090-0125
 S.N. 090-0126
 S.N. 090-0127



J.U.I.E.
 JOINT UTILITY LOCATION INFORMATION FOR EXCAVATION
 1-800-892-0123
 OR 811

PROJECT ENGINEER NICK JACK (309)671-3451
 PROJECT MANAGER TOM INGLIS (309)671-3450

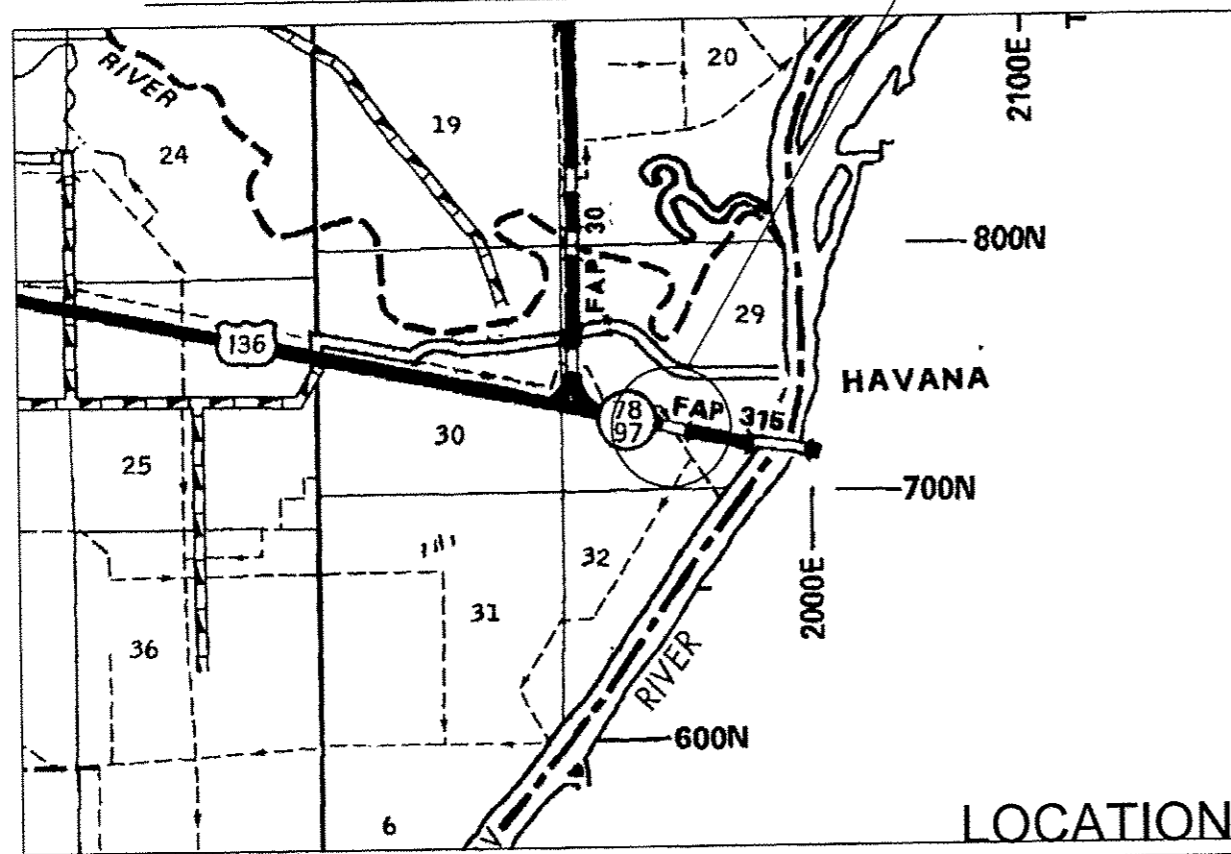
STATE OF ILLINOIS
 DEPARTMENT OF TRANSPORTATION
 DIVISION OF HIGHWAYS

SUBMITTED *Feb 13 20 14*
Joseph E. Lovell
 DEPUTY DIRECTOR OF HIGHWAYS, REGION ENGINEER
March 21 20 14
John D. Baranzello, PE, EIT
 ENGINEER OF DESIGN AND ENVIRONMENT
March 21 20 14
Omar Osman, PE, EIT
 DIRECTOR OF HIGHWAYS, CHIEF ENGINEER

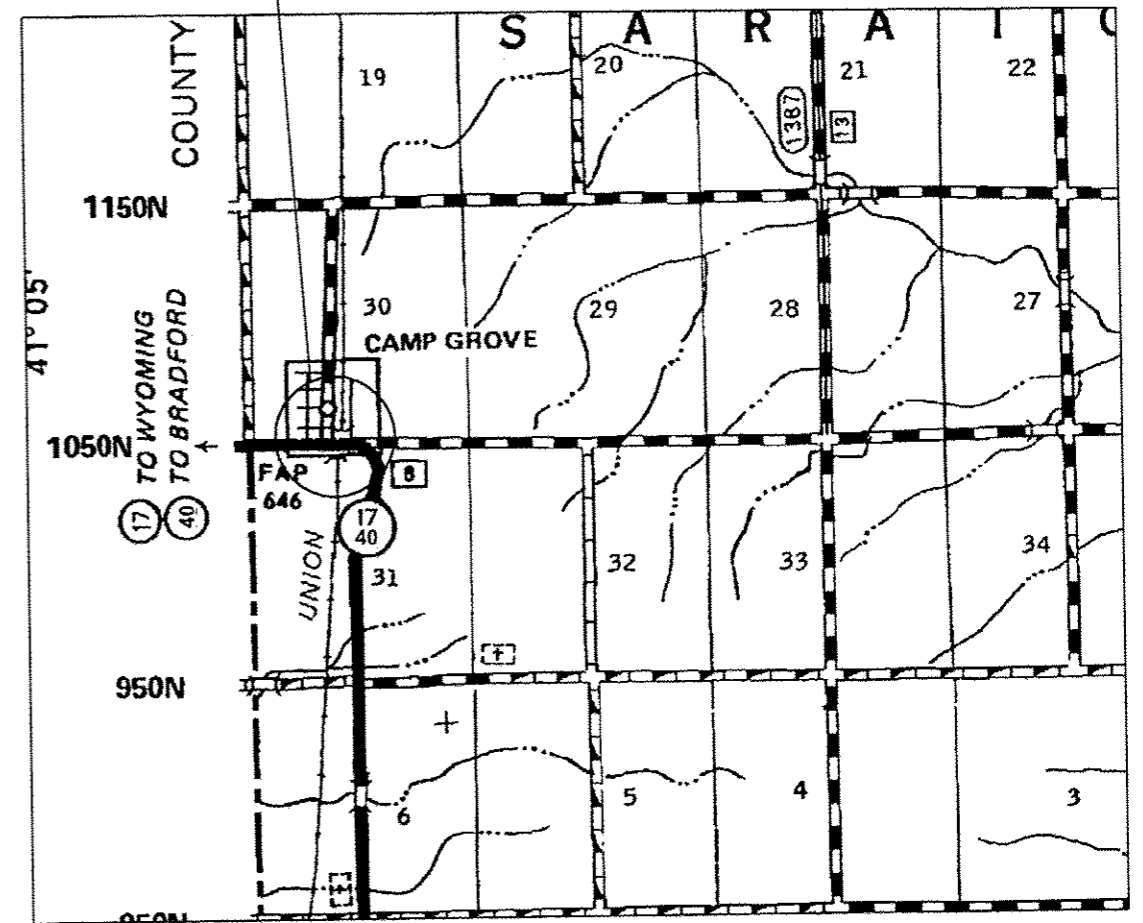
PRINTED BY THE AUTHORITY
 OF THE STATE OF ILLINOIS

CONTRACT NO. 68B49 CATALOG NO. 034935-00D

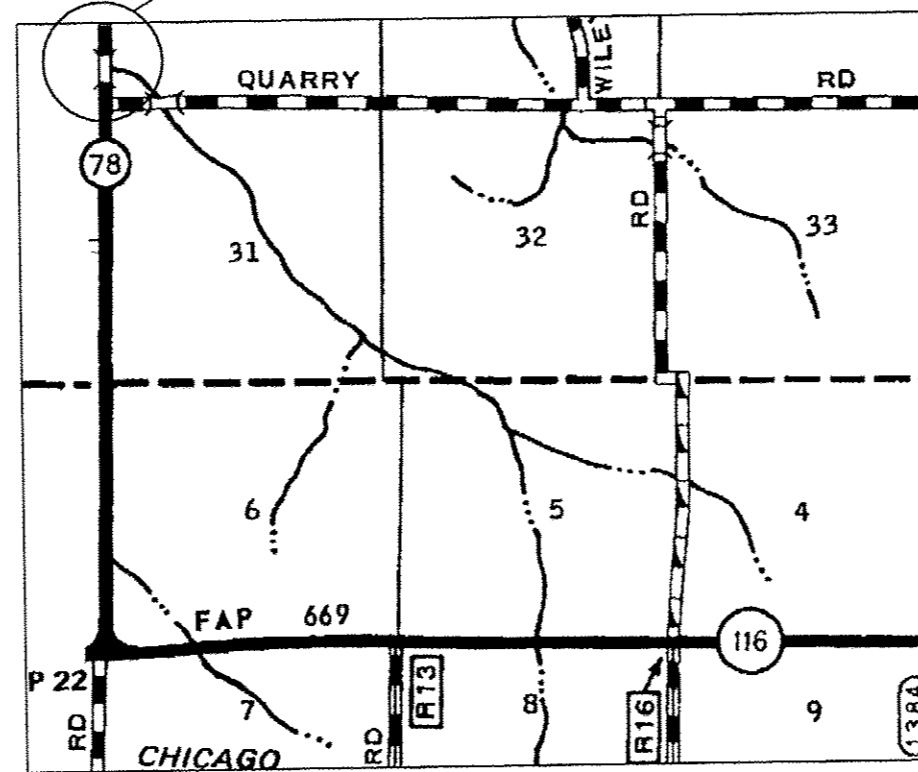
LOCATION 6 S.N. 029-0012



LOCATION 7 S.N. 062-0038



LOCATION 8 S.N. 072-0160



FILE NAME :	USER NAME : aubreyg	DESIGNED -	REVISED -
c:\users\aubreyg\desktop\68849\68849	2014 Metalizing.dgn	DRAWN -	REVISED -
Default	PLOT SCALE = 100.0000 1/ in.	CHECKED -	REVISED -
	PLOT DATE = 2/14/2014	DATE -	REVISED -

STATE OF ILLINOIS
DEPARTMENT OF TRANSPORTATION

LOCATION MAPS

SCALE: SHEET OF SHEETS STA. TO STA.

F.A. RTE.	SECTION	COUNTY	TOTAL SHEETS	SHEET NO.
VAR 04	Bridge Metalizing 2014	Various	23	2
			CONTRACT NO. 68849	
ILLINOIS FED. AID PROJECT				

CODE NO.	ITEM	UNIT	TOTAL QUANTITY	VARIOUS COUNTIES			
				CONSTRUCTION CODE			
				TAZEWELL	FULTON	MARSHALL	PEORIA
				0014	0014	0014	0014
100% STATE	100% STATE	100% STATE	100% STATE				
URBAN	RURAL	RURAL	RURAL				
50606701	CLEANING AND PAINTING STRUCTURAL STEEL, LOCATION 1	L SUM	1	1			
50606702	CLEANING AND PAINTING STRUCTURAL STEEL, LOCATION 2	L SUM	1	1			
67100100	MOBILIZATION	L SUM	1	0.25	0.25	0.25	0.25
70100310	TRAFFIC CONTROL AND PROTECTION, STANDARD 701421	L SUM	1	1			
70100420	TRAFFIC CONTROL AND PROTECTION, STANDARD 701411	EACH	1	1			
70100450	TRAFFIC CONTROL AND PROTECTION, STANDARD 701201	L SUM	1		0.33	0.33	0.34
70100700	TRAFFIC CONTROL AND PROTECTION, STANDARD 701406	L SUM	1	1			
70100825	TRAFFIC CONTROL AND PROTECTION, STANDARD 701456	L SUM	1	1			
X0325383	FIELD THERMAL SPRAYING (METALLIZING) STRUCTURAL STEEL NO. 3	L SUM	1	1			
X0325384	FIELD THERMAL SPRAYING (METALLIZING) STRUCTURAL STEEL NO. 4	L SUM	1	1			
X0325385	FIELD THERMAL SPRAYING (METALLIZING) STRUCTURAL STEEL NO. 5	L SUM	1	1			
X0327378	FIELD THERMAL SPRAYING (METALLIZING) STRUCTURAL STEEL NO. 6	L SUM	1		1		
X0327542	FIELD THERMAL SPRAYING (METALLIZING) STRUCTURAL STEEL NO. 7	L SUM	1			1	
X5060603	CONTAINMENT AND DISPOSAL OF NON-LEAD PAINT CLEANING RESIDUES NO. 3	L SUM	1	1			

14

FILE NAME :	USER NAME : aubreyg	DESIGNED -	REVISED -	STATE OF ILLINOIS DEPARTMENT OF TRANSPORTATION	SUMMARY OF QUANTITIES	F.A. RTE.	SECTION	COUNTY	TOTAL SHEETS	SHEET NO.	
d:\user\aubreyg\desk top\60649\60649	2014 Metallizing.dgn	DRAWN -	REVISED -			VAR	D4 BRIDGE WEATALIZING	VARIOUS	23	3	
	PLOT SCALE = 100.0000 ' / in.	CHECKED -	REVISED -			CONTRACT NO. 68849					
	PLOT DATE = 2/14/2014	DATE -	REVISED -			ILLINOIS REG. AID PROJECT					

AUS 11/22

CODE NO.	ITEM	UNIT	TOTAL QUANTITY	VARIOUS COUNTIES			
				CONSTRUCTION CODE			
				TAZEWELL	FULTON	MARSHALL	PEORIA
				100% STATE	100% STATE	100% STATE	100% STATE
				0014	0014	0014	0014
X5060604	CONTAINMENT AND DISPOSAL OF NON-LEAD PAINT CLEANING RESIDUES NO. 4	L SUM	1	1			
X5060605	CONTAINMENT AND DISPOSAL OF NON-LEAD PAINT CLEANING RESIDUES NO. 5	L SUM	1	1			
X5060606	CONTAINMENT AND DISPOSAL OF NON-LEAD PAINT CLEANING RESIDUES NO. 6	L SUM	1		1		
Z0007101	CONTAINMENT AND DISPOSAL OF LEAD PAINT CLEANING RESIDUES NO. 1	L SUM	1	1			
Z0007102	CONTAINMENT AND DISPOSAL OF LEAD PAINT CLEANING RESIDUES NO. 2	L SUM	1	1			
Z0007107	CONTAINMENT AND DISPOSAL OF LEAD PAINT CLEANING RESIDUES NO. 7	L SUM	1			1	
Z0048665	RAILROAD PROTECTIVE LIABILITY INSURANCE	L SUM	1	0.75		0.25	
X5060608	CONTAINMENT AND DISPOSAL OF NON-LEAD PAINT CLEANING RESIDUES NO. 8	L SUM	1				1
X0327730	FIELD THERMAL SPRAYING (METALLIZING) STRUCTURAL STEEL NO. 8	L SUM	1				1

FILE NAME :	USER NAME : aubreya	DESIGNED -	REVISED -
c:\users\aubreya\desktop\68b49\68b49	2014 Metallizing.dgn	DRAWN -	REVISED -
	PLOT SCALE : 100.0000 ' / 1"	CHECKED -	REVISED -
	PLOT DATE : 2/14/2014	DATE -	REVISED -

STATE OF ILLINOIS
DEPARTMENT OF TRANSPORTATION

SUMMARY OF QUANTITIES

F.A. RTE.	SECTION	COUNTY	TOTAL SHEETS	SHEET NO.
VAR	D4 BRIDGE METALLIZING	VARIOUS	23	4
			CONTRACT NO. 68B49	
ILLINOIS FED. AID PROJECT				

COMMITMENTS

No Commitments have been made for this project.

GENERAL NOTES

Cleaning and Painting shall be as specified in the Special Provisions for " Cleaning and Painting Existing Structural Steel" All beams, brackets and all other structural steel shall be cleaned per Near White Blast Cleaning SSPC-SP10 according to the following schedule:

Bridge Locations 1 & 2. Shall include all of span 1 plus 5 feet into span 2. Also included shall be the expansion joint area out 5 feet at the East Abutment. Paint System 1 - OZ/E/U for Bare Steel shall be used with the final finish coat for the Fascia Shall Blue (Munsel No. 10B 3/6) for the underside shall be Light Grey (Munsel No. 5B 7/1)

All Metalizing shall be as specified in the Special Provisions for " Field Thermal Spraying Metalizing" All beams,brackets and all other structural steel shall be cleaned per Near White Blast cleaning SSPC-SP10 according to the following schedule:

Bridge Locations 3 - 8. All beams, brackets and all other structural steel within 5 feet (as measured along the centerline of the bearing) either side of the deck joints.

Bridge Locations 3 - 6. All Fascia and underside beams shall be Interstate Green (Munsel No. 7.5G 4/8)
 Bridge Locations 7 & 8. All Fascia and Underside beams shall be Blue (Munsel No. 10B 3/6)

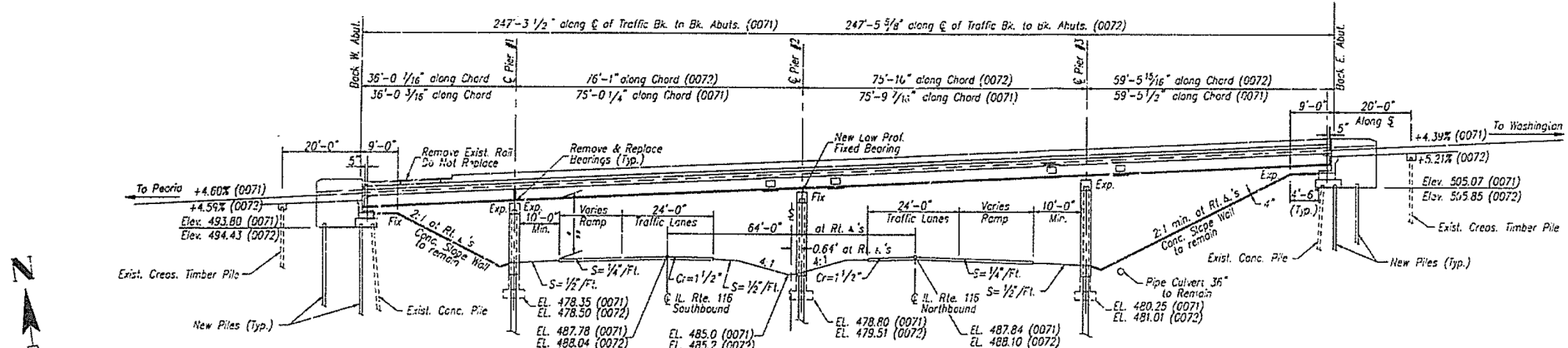
All Top Coat and Sealer shall be from the approved list from table one (1) of the Special Provisios.

AIR MONITORS - None for this Project.

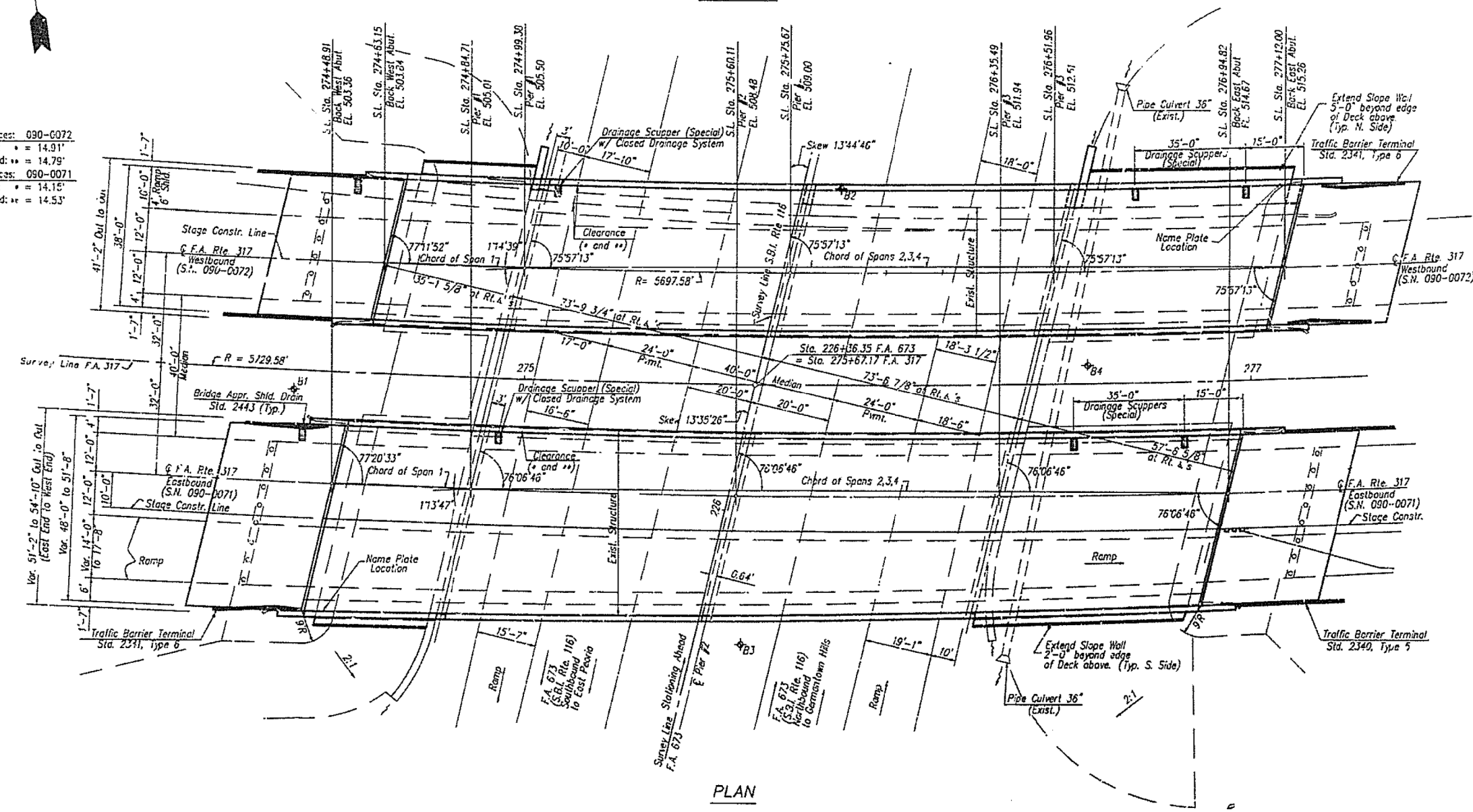
QP1 & QP2 Required for this Project.

FILE NAME =	USER NAME = aubreys	DESIGNED -	REVISED -	STATE OF ILLINOIS DEPARTMENT OF TRANSPORTATION	COMMITMENTS AND GENERAL NOTES				F.A. RTE.	SECTION	COUNTY	TOTAL SHEETS	SHEET NO.
c:\users\aubreys\desktop\68b49\68b49	2014 Metalizing.dgn	DRAWN -	REVISED -						VAR	D4 Bridge Metalizing 2014	Various	23	5
Default	PLOT SCALE = 100.0000' / in.	CHECKED -	REVISED -		CONTRACT NO. 68B49								
	PLOT DATE = 2/14/2014	DATE -	REVISED -		SCALE:	SHEET	OF	SHEETS	STA.	TO	STA.	ILLINOIS FED. AID PROJECT	

LOC. 1&2 S.N. 090-0071 & 090-0072



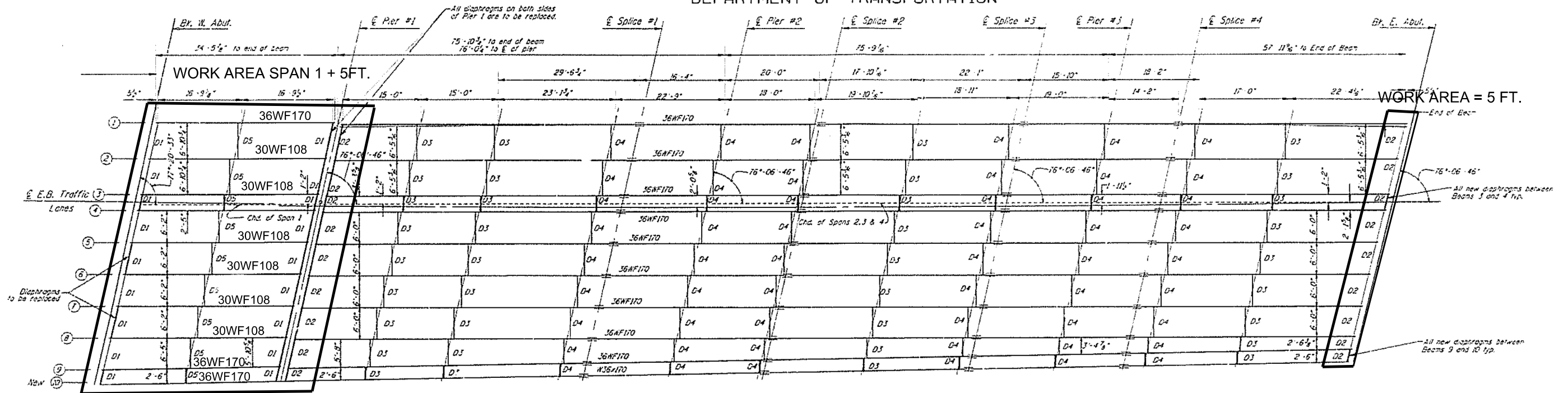
Clearances: 090-0072
 existing: + = 14.91'
 proposed: ** = 14.79'
 Clearances: 090-0071
 existing: + = 14.16'
 proposed: ** = 14.53'



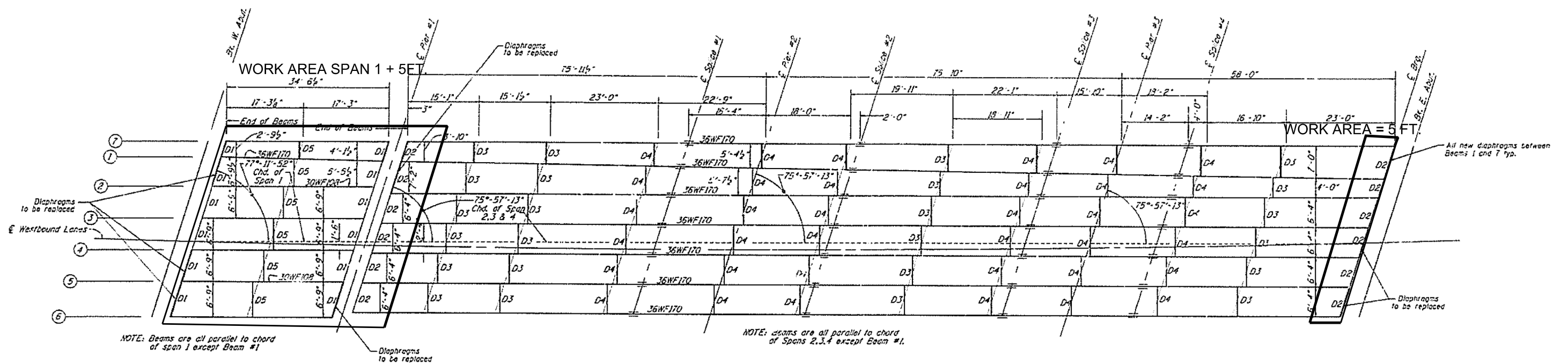
FILE NAME = c:\users\aubreygs\desktop\68b49\68b49	USER NAME = aubreygs	DESIGNED -	REVISED -	STATE OF ILLINOIS DEPARTMENT OF TRANSPORTATION	LOCATION 1&2 ELEVATION VIEW INFORMATION ONLY				F.A. RTE.	SECTION	COUNTY	TOTAL SHEETS	SHEET NO.
	PLOT SCALE = 100.0000' / in.	DRAWN -	REVISED -		SCALE:	SHEET	OF SHEETS	STA.	TO STA.	VAR D4 Bridge Metalizing 2014	Various	23	6
Default	PLOT DATE = 2/14/2014	CHECKED -	REVISED -	CONTRACT NO. 68B49									
		DATE -	REVISED -	ILLINOIS FED. AID PROJECT									

LOC. 1 S.N. 090-0071 (EB)

STATE OF ILLINOIS
DEPARTMENT OF TRANSPORTATION

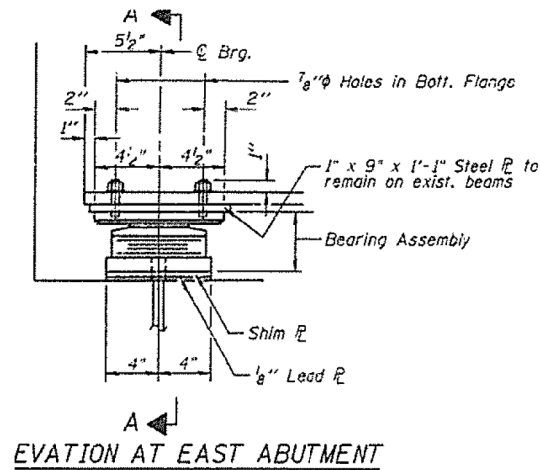


LOC. 2 S.N. 090-0072 (WB)



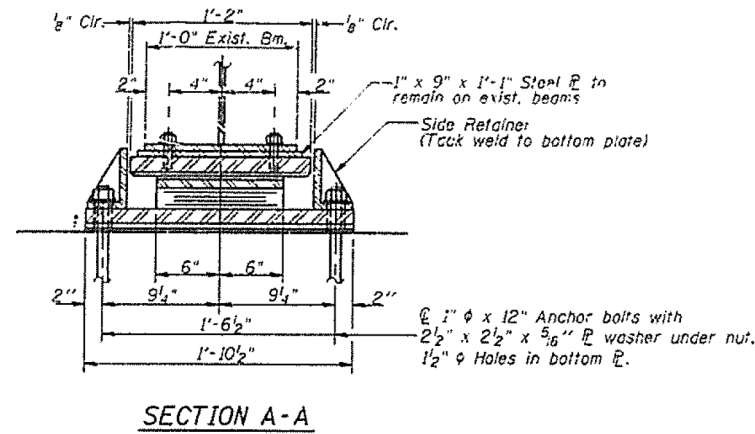
FILE NAME =	USER NAME = aubreys	DESIGNED -	REVISED -	STATE OF ILLINOIS DEPARTMENT OF TRANSPORTATION	LOCATION 1&2 FRAMING PLAN INFORMATION ONLY				F.A. RTE.	SECTION	COUNTY	TOTAL SHEETS	SHEET NO.
Default	2014 Metalizing.dgn	DRAWN -	REVISED -						VAR	D4 Bridge Metalizing 2014	Various	23	7
	PLOT SCALE = 100.0000' / in.	CHECKED -	REVISED -		CONTRACT NO. 68B49				ILLINOIS FED. AID PROJECT				
	PLOT DATE = 2/14/2014	DATE -	REVISED -		SCALE:	SHEET	OF SHEETS	STA.	TO STA.				

LOC.1 S.N. 090-0071 (EB) & LOC.2 S.N. 090-0072 (WB) BEARINGS

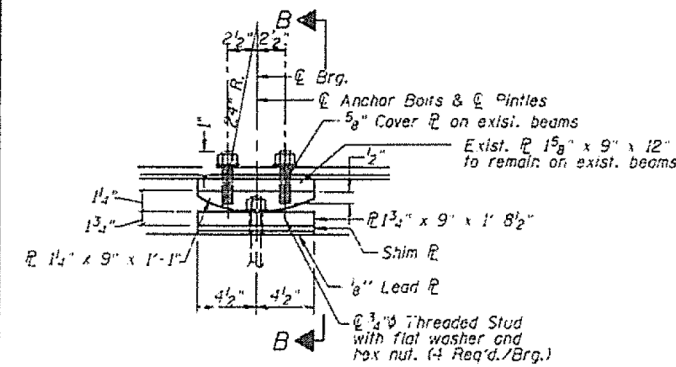


ELEVATION AT EAST ABUTMENT

TYPE II TFE ELASTOMERIC EXP. BRG.



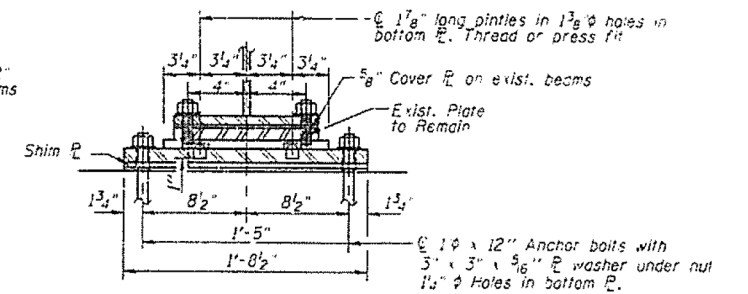
SECTION A-A



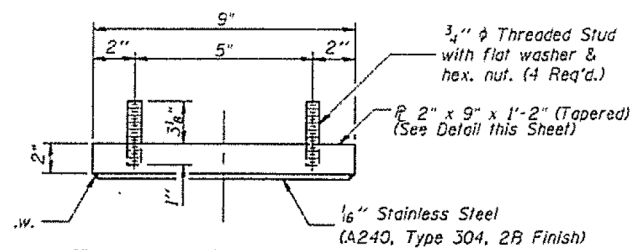
ELEVATION AT PIER 2

FIXED BEARING

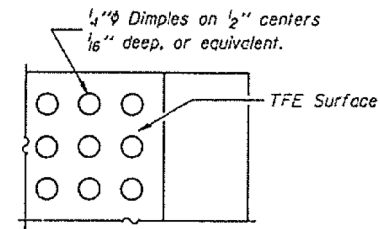
(Weight included in Structural Steel)



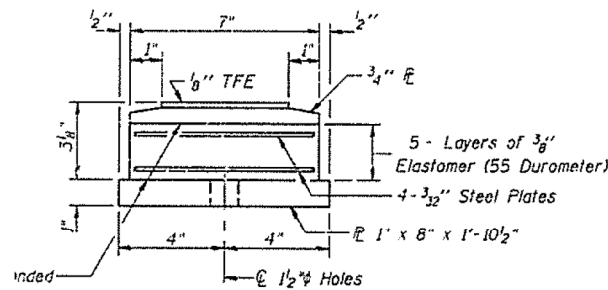
SECTION B-B
(AT PIER 2)



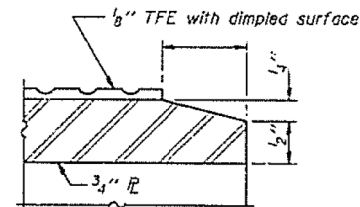
TOP BEARING ASSEMBLY



PLAN-TFE SURFACE



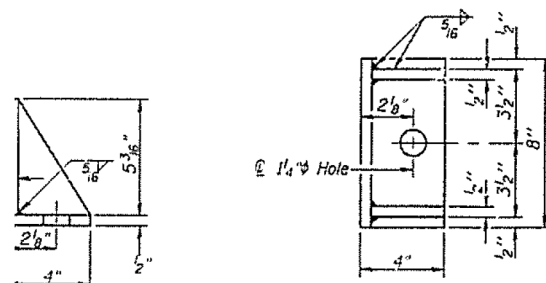
BOTTOM BEARING ASSEMBLY



SECTION THRU TFE

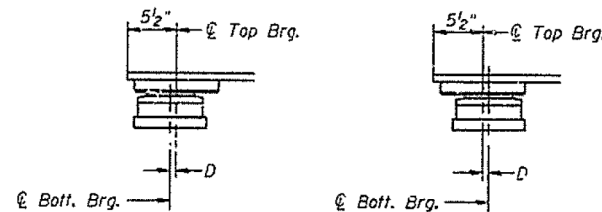
Note: The 1/8" TFE sheet shall be bonded directly to the top steel plate with a two-component, medium viscosity epoxy resin, conforming to the requirements of the Federal Specification MMM-A-134, Type . . . The bond agent shall be applied on the full area of the contact surfaces.

Bonding of 1/8" TFE sheet during vulcanizing process will be permitted provided the process and method of adjusting assembly height is approved by the Engineer.



SIDE RETAINER

Equivalent rolled angle with stiffeners will be allowed in lieu of welded plates. Weight included with Structural Steel.

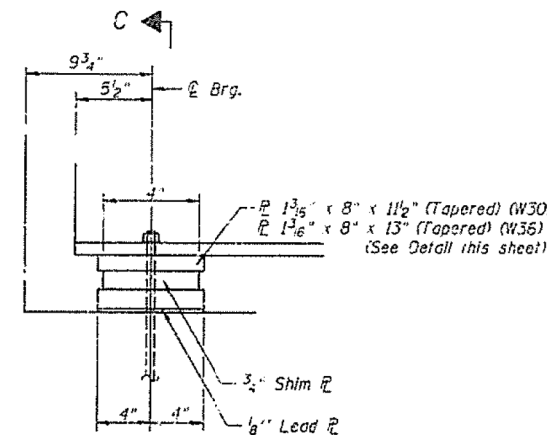


BELOW 50°F.

(Move bott. brg. away from fixed brg.)

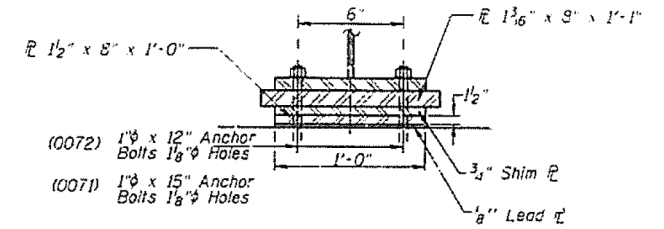
ABOVE 50°F.

(Move bott. brg. toward fixed brg.)

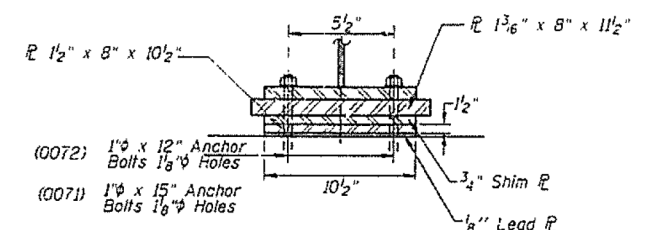


ELEVATION AT WEST ABUTMENT

NOTE: Before installing the new bearings, remove the top plate of the existing bearing assembly from the bottom flange using the air-arc method and grind smooth all weld material remaining on the bottom flange. Grind existing anchor bolts flush with existing concrete surface. Grind existing anchor bolt smooth and seal with epoxy. Cost is incidental to Furnishing and Erecting Structural Steel.



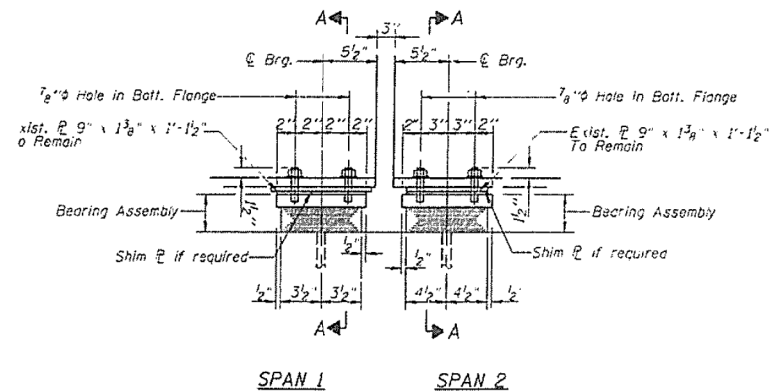
SECTION C-C
(AT W. ABUT., BEAMS 1, 9 & 10) S.N. 0071
(AT W. ABUT., BEAMS 1, 6 & 7) S.N. 0072



SECTION C-C
(AT W. ABUT., BEAMS 2-5) S.N. 0071
(AT W. ABUT., BEAMS 2-5) S.N. 0072

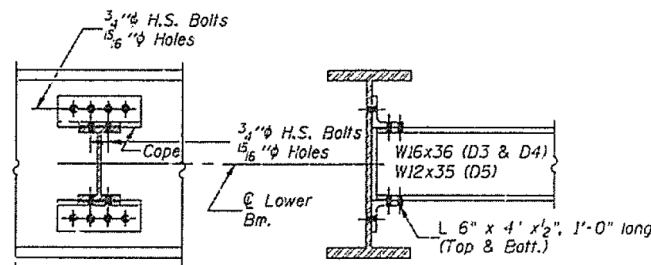
FILE NAME =	USER NAME = aubreys	DESIGNED -	REVISED -	STATE OF ILLINOIS DEPARTMENT OF TRANSPORTATION	LOCATION 1&2 BEARING DETAIL INFORMATION ONLY				F.A. R.T.E.	SECTION	COUNTY	TOTAL SHEETS	SHEET NO.
ci:\users\aubreys\desktop\68b49\68b49	2014 Metalizing.dgn	DRAWN -	REVISED -		SCALE:	SHEET	OF	SHEETS	STA.	TO	STA.	ILLINOIS	FED. AID PROJECT
Default	PLOT SCALE = 100.0000' / in.	CHECKED -	REVISED -						VAR	D4 Bridge Metalizing 2014	Various	23	8
	PLOT DATE = 2/14/2014	DATE -	REVISED -						CONTRACT NO. 68B49				

LOC.1 S.N. 090-0071 (EB) & LOC.2 S.N. 090-0072 (WB) BEARINGS AND DIAPHRAGMS



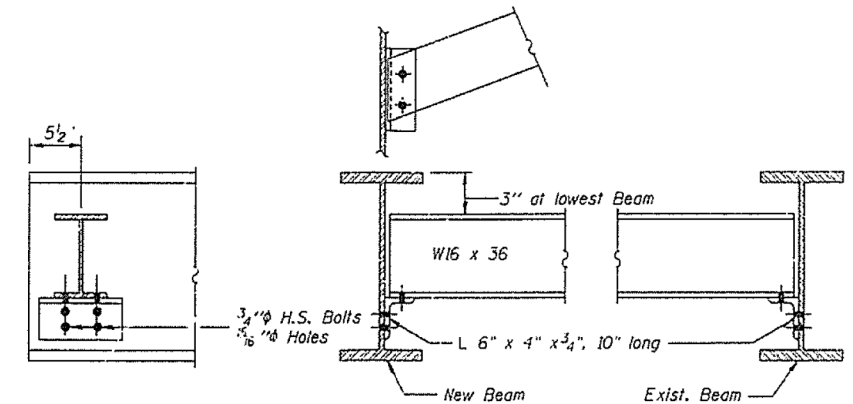
ELEVATION AT PIER 1

(Beams 1, 9 & 10 S.N. 0071)
(Beams 1, 6 & 7 S.N. 0072)



DIAPHRAGMS D3, D4 & D5

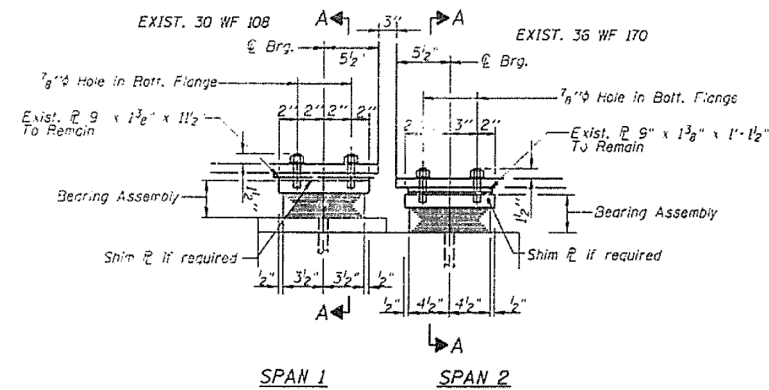
NOTES: Two hardened washers shall be required over all 5/16" dia. holes. Horizontal leg of angles shall be bent to the slope b/w beams.



DIAPHRAGMS D1 & D2

NOTES: Two hardened washers shall be required over all 5/16" dia. holes.

Holes in angles for end diaphragms of existing beams shall be field drilled using existing holes in web as a template. Cost of field drilling holes and removing existing rivets is incidental to "Furnishing and Erecting Structural Steel."



ELEVATION AT PIER 1

(Beams 2-8 S.N. 0071)
(Beams 2-5 S.N. 0072)

TYPE I ELASTOMERIC EXP. BRG.

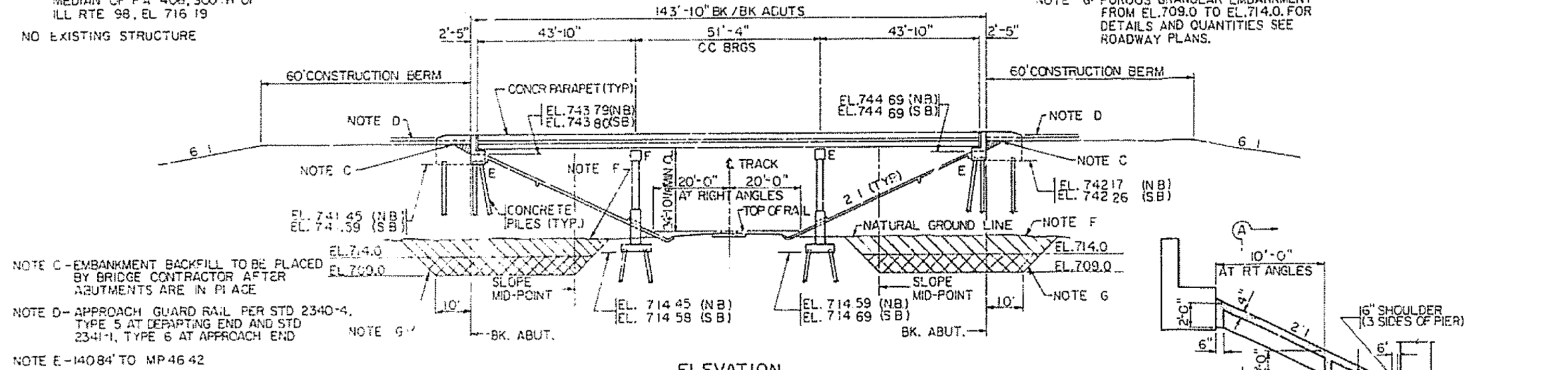
FILE NAME =	USER NAME = aubreys	DESIGNED -	REVISED -	STATE OF ILLINOIS DEPARTMENT OF TRANSPORTATION	LOCATION 1&2 BEARING & DIAPHRAGM INFORMATION ONLY	F.A. RTE.	SECTION	COUNTY	TOTAL SHEETS	SHEET NO.
c:\users\aubreys\desktop\68b49\68B49	2014 Metalizing.dgn	DRAWN -	REVISED -			VAR D4 Bridge Metalizing 2014	Various	23	9	
Default	PLOT SCALE = 100.0000' / in.	CHECKED -	REVISED -			CONTRACT NO. 68B49				
	PLOT DATE = 2/14/2014	DATE -	REVISED -			ILLINOIS FED. AID PROJECT				
				SCALE:	SHEET	OF	SHEETS	STA.	TO	STA.

LOC.3&4 S.N. 090-0125 & 0126

TBM-T02 CHISELED "d" ON THE
 MEDIAN OF FA 406, SOUTH OF
 ILL RTE 98, EL 716.19
 NO EXISTING STRUCTURE

NOTE F: REMOVE AND REPLACE UNSUITABLE
 MATERIALS TO EL.709.0.

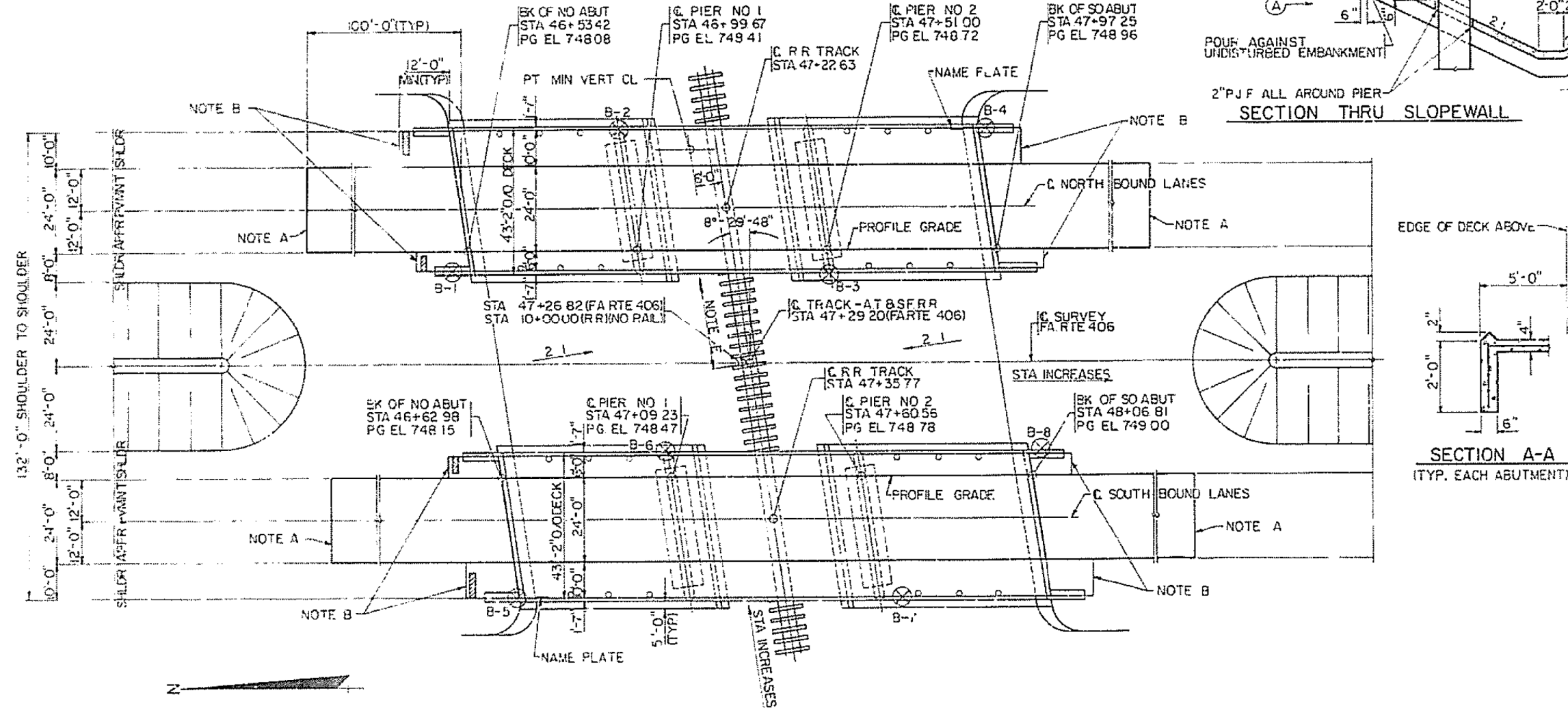
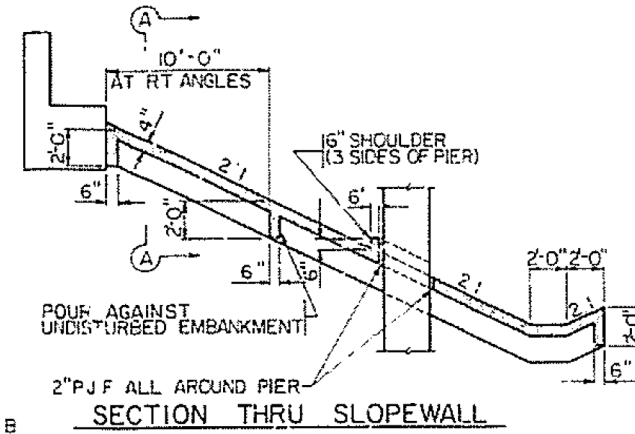
NOTE G: POROUS GRANULAR EMBANKMENT
 FROM EL.709.0 TO EL.714.0. FOR
 DETAILS AND QUANTITIES SEE
 ROADWAY PLANS.



NOTE C- EMBANKMENT BACKFILL TO BE PLACED
 BY BRIDGE CONTRACTOR AFTER
 ABUTMENTS ARE IN PLACE

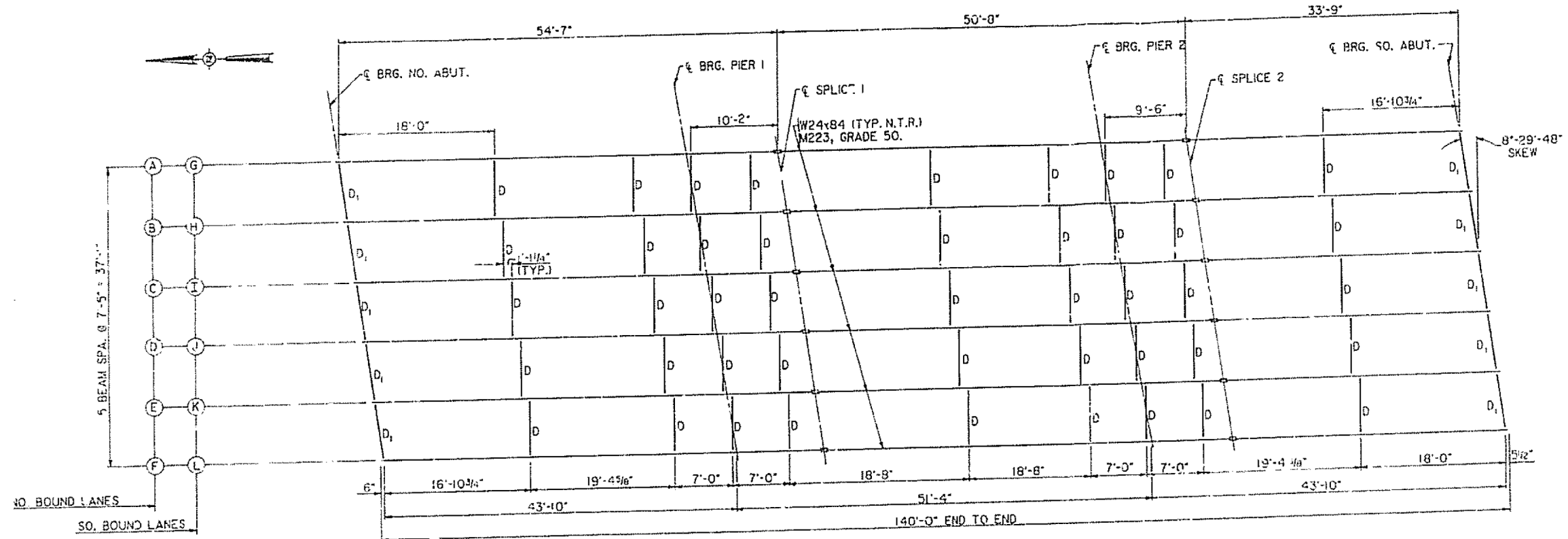
NOTE D- APPROACH GUARD RAIL PER STD 2340-4,
 TYPE 5 AT DEPARTING END AND STD
 2341-1, TYPE 6 AT APPROACH END

NOTE E- I4084' TO MP 46.42

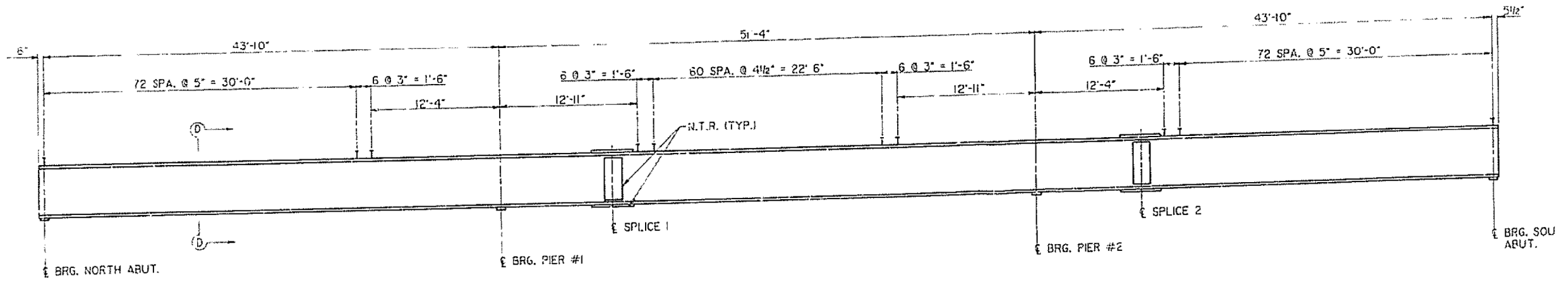


FILE NAME =	USER NAME = aubreys	DESIGNED -	REVISED -	STATE OF ILLINOIS DEPARTMENT OF TRANSPORTATION	LOCATION 3&4 ELEVATION VIEW INFORMATION ONLY				F.A. RTE.	SECTION	COUNTY	TOTAL SHEETS	SHEET NO.			
Default	ci:\users\aubreys\desktop\68b49\68b49	DRAWN -	REVISED -		SCALE:	SHEET	OF	SHEETS	STA.	TO	STA.	VAR	D4 Bridge Metalizing 2014	Illinois	23	10
		CHECKED -	REVISED -										Various			
		DATE -	REVISED -										CONTRACT NO. 68B49			

LOC.3&4 S.N. 090-0125 & 0126



FRAMING PLAN
N.T.R. DENOTES NOTCH TOUGHNESS REQUIREMENT



BEAM ELEVATION
(SHOWING SHEAR STUD SPACING)

M I L STRUCTURAL STEEL FABR

FILE NAME =	USER NAME = aubreys	DESIGNED -	REVISED -	STATE OF ILLINOIS DEPARTMENT OF TRANSPORTATION	LOCATION 3&4 FRAMING PLAN INFORMATION ONLY			F.A. RTE.	SECTION	COUNTY	TOTAL SHEETS	SHEET NO.
ci:\users\aubreys\desktop\68b49\68b49	2014 Metalizing.dgn	DRAWN -	REVISED -		VAR	D4 Bridge Metalizing 2014	Various	23	11			
Default	PLOT SCALE = 100.0000' / in.	CHECKED -	REVISED -		SCALE: SHEET OF SHEETS STA. TO STA.			CONTRACT NO. 68B49				
	PLOT DATE = 2/14/2014	DATE -	REVISED -		ILLINOIS FED. AID PROJECT							

LOC.3&4 S.N. 090-0125 & 0126

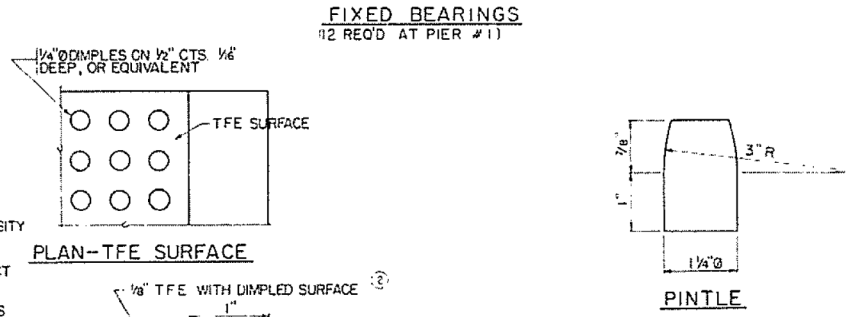
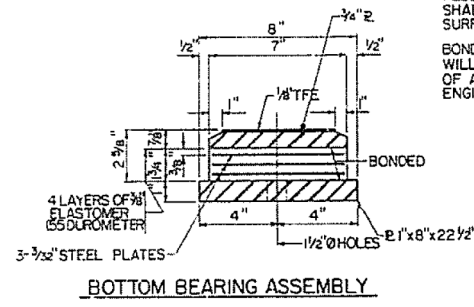
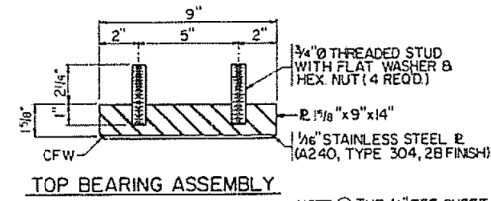
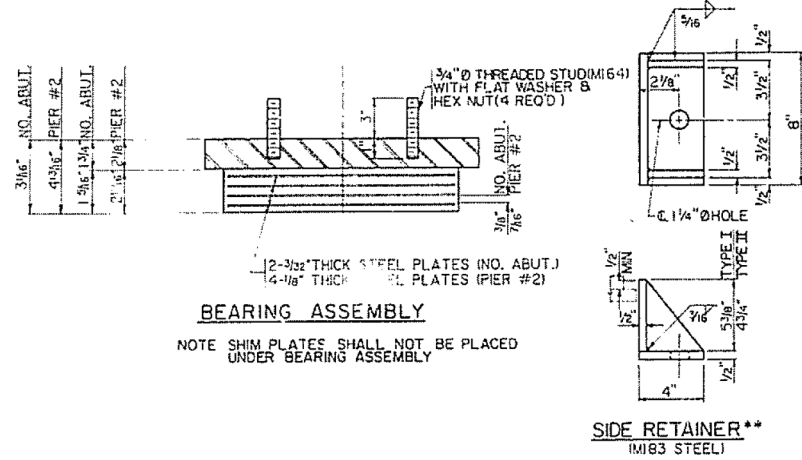
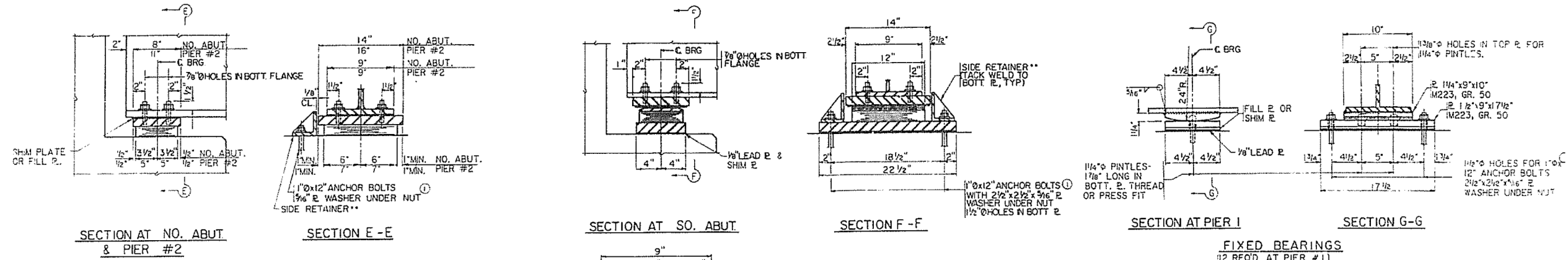


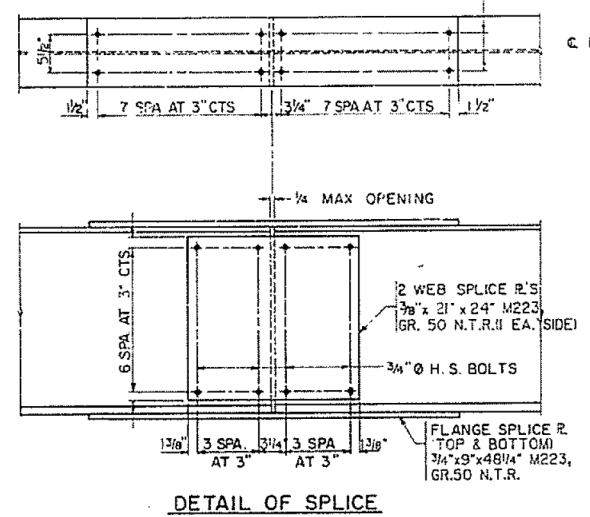
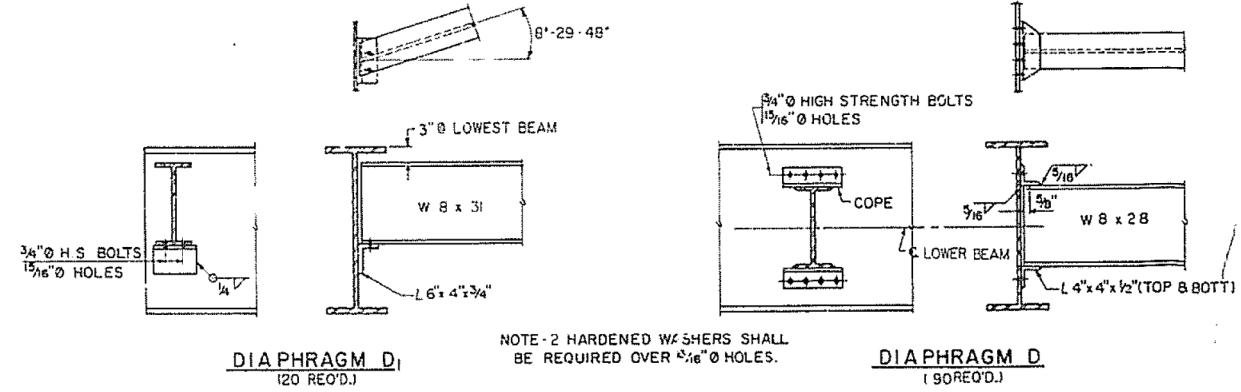
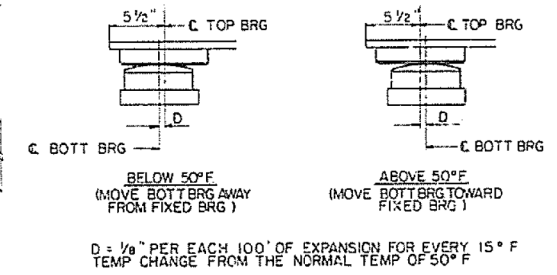
TABLE OF REQUIRED FILL PLATES

BEAM	PIER NO.1	PIER NO.2
G	17 1/2" x 9" x 1/2"	11" x 9" x 3/4"
I	17 1/2" x 9" x 1/2"	11" x 9" x 3/4"

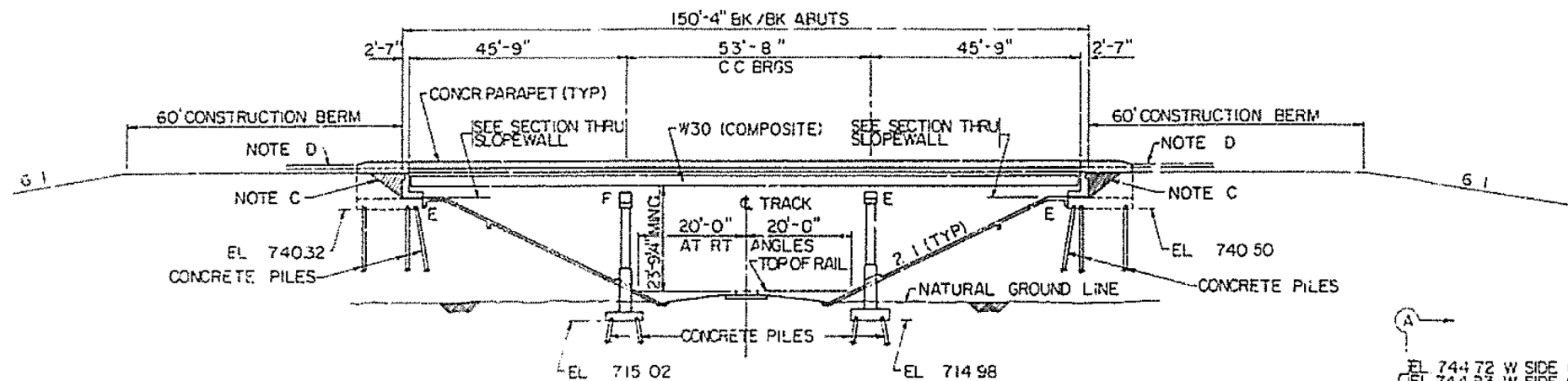
TYPE I ELASTOMERIC EXPANSION BEARING
(12 REQ'D AT NO. ABUTMENT)
(12 REQ'D AT PIER #2)

TYPE II TFE ELASTOMERIC EXPANSION BEARING
(12 REQ'D AT SO. ABUTMENT)

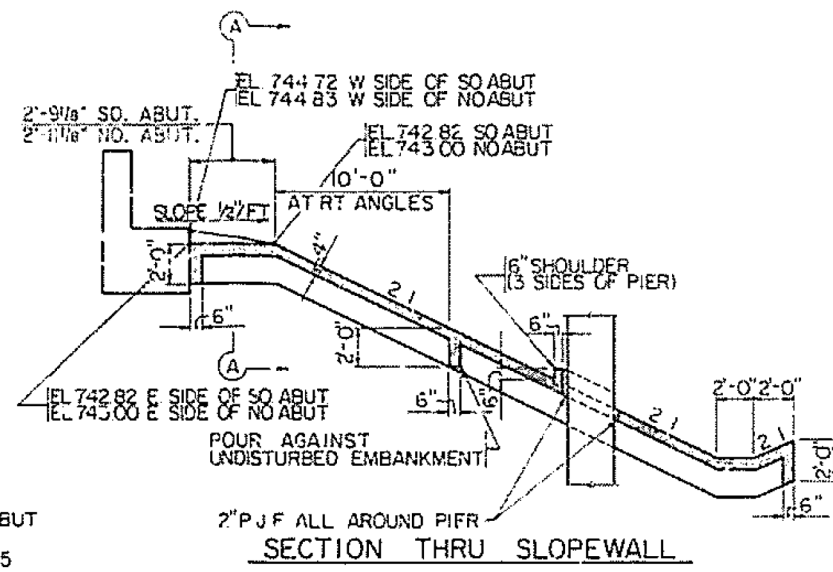
**SIDE RETAINERS TO BE USED AT INSIDE FACE OF EXTERIOR STRINGERS ONLY (TYPE I) AND AT EACH FACE OF EACH STRINGER (TYPE II). EQUIVALENT ROLLED ANGLE WITH STIFFENERS WILL BE ALLOWED IN LIEU OF WELDED PLATES.



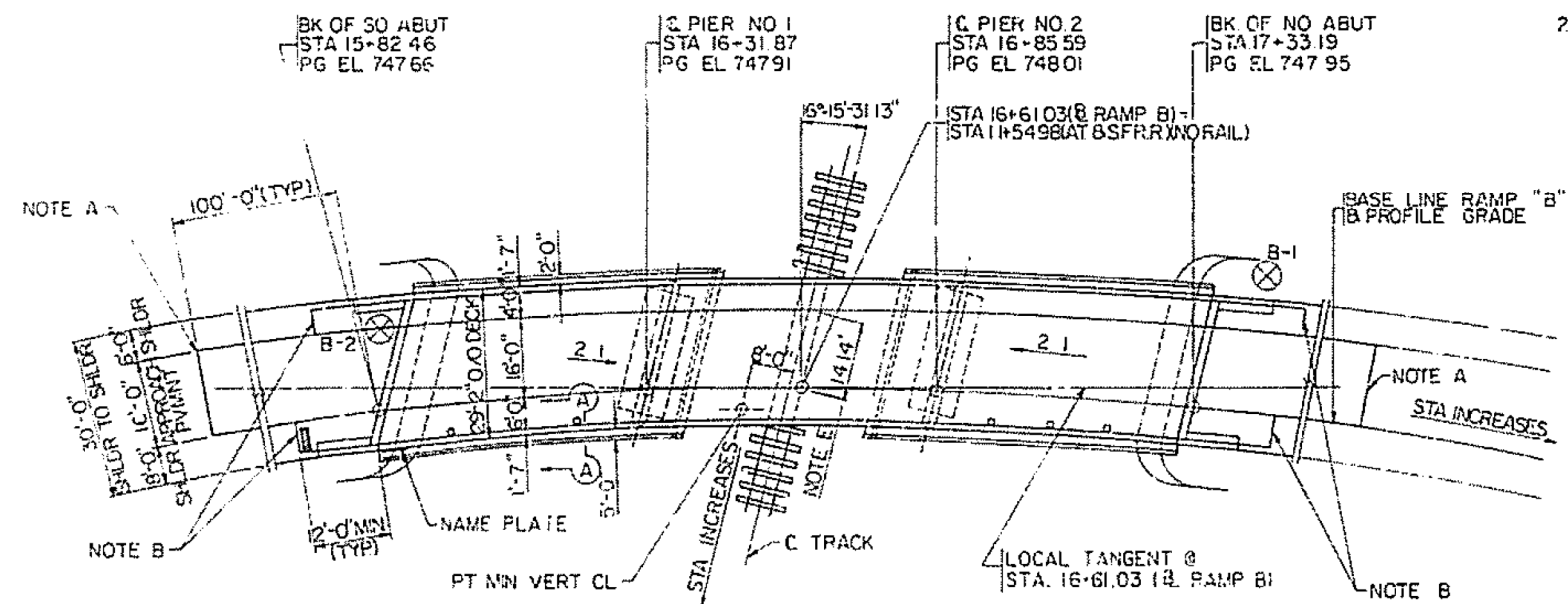
LOC.5 S.N. 090-0127



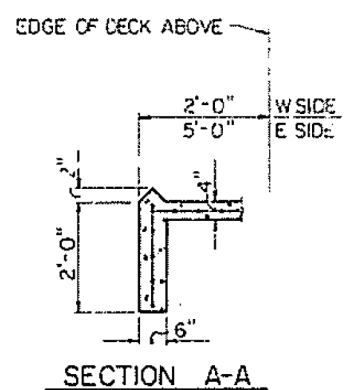
ELEVATION



SECTION THRU SLOPEWALL



PLAN

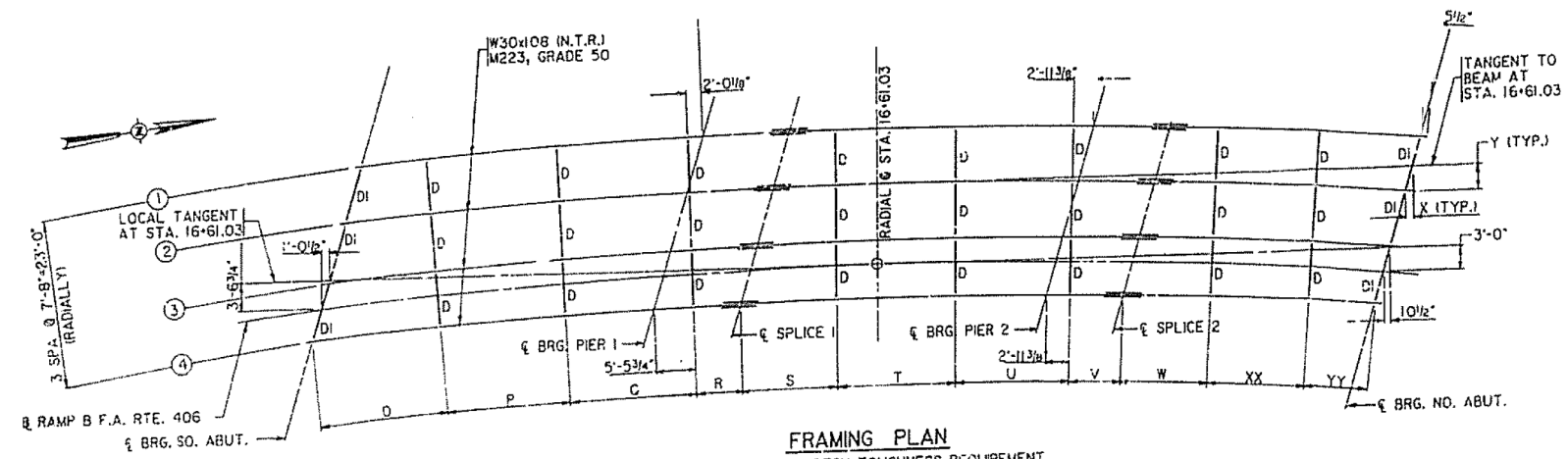


SECTION A-A



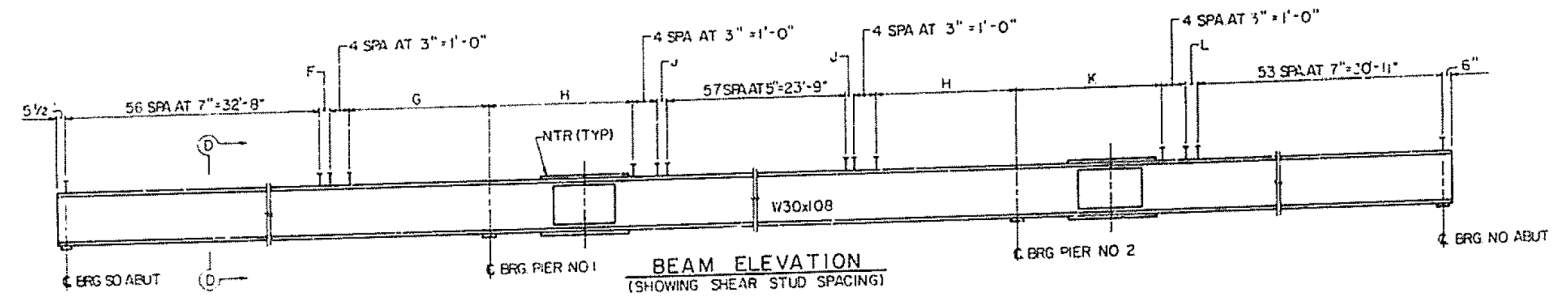
FILE NAME =	USER NAME = aubreys	DESIGNED -	REVISED -	STATE OF ILLINOIS DEPARTMENT OF TRANSPORTATION	LOCATION 5 ELEVATION VIEW INFORMATION ONLY				F.A. RTE.	SECTION	COUNTY	TOTAL SHEETS	SHEET NO.			
ci:\users\aubreys\desktop\68b49\68b49	2014 Metalizing.dgn	DRAWN -	REVISED -		SCALE:	SHEET	OF	SHEETS	STA.	TO	STA.	VAR	D4 Bridge Metalizing 2014	Illinois	23	13
Default	PLOT SCALE = 100.0000' / in.	CHECKED -	REVISED -										Various			
	PLOT DATE = 2/14/2014	DATE -	REVISED -										CONTRACT NO. 68B49			

LOC.5 S.N. 090-0127

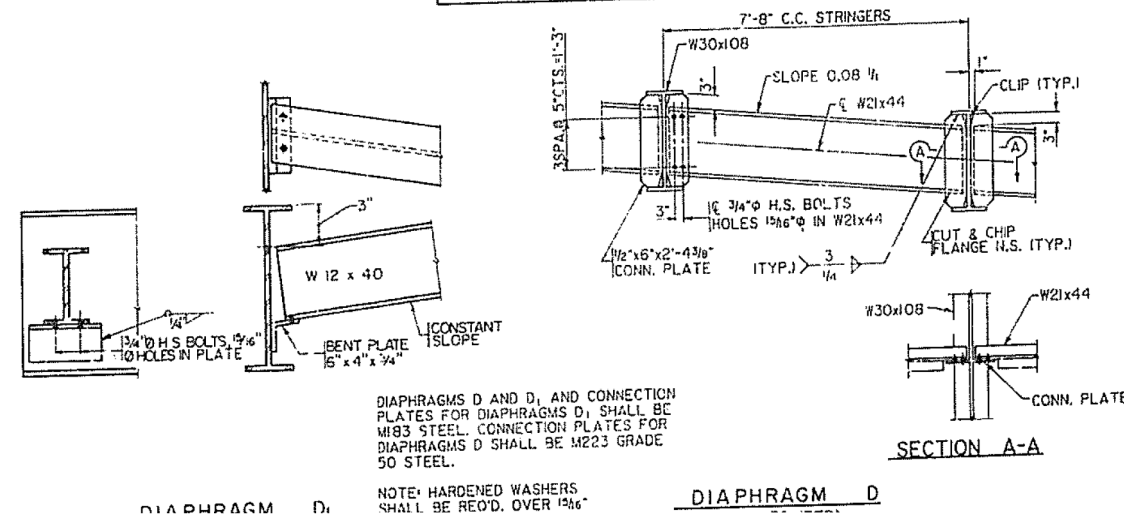


INTERIOR DIAPHRAGM LAYOUT DIMENSIONS

BEAM	O	P	Q	R	S	T	U	V	W	XX	YY
1	8'-9"	17'-11"	17'-11"	12'-7 1/4"	7'-4 7/8"	16'-4 1/8"	16'-4 1/8"	12'-6 1/2"	7'-5 1/2"	13'-11 3/4"	13'-11 3/4"
2	11'-7 3/8"	17'-9"	17'-9"	10'-1 3/8"	9'-8 3/8"	16'-2 1/4"	16'-2 1/4"	10'-7 1/8"	9'-2 3/8"	13'-10 1/4"	12'-4 1/4"
3	14'-6 3/8"	17'-7"	17'-7"	7'-7 3/8"	11'-11 3/4"	16'-0 1/2"	16'-0 1/2"	8'-8"	10'-1 1/2"	13'-8 3/8"	10'-8 3/8"
4	17'-5"	17'-5"	17'-5"	5'-2"	14'-3 3/8"	15'-0 3/8"	15'-10 3/8"	6'-8 1/2"	12'-8 7/8"	13'-7 1/8"	9'-1 1/8"



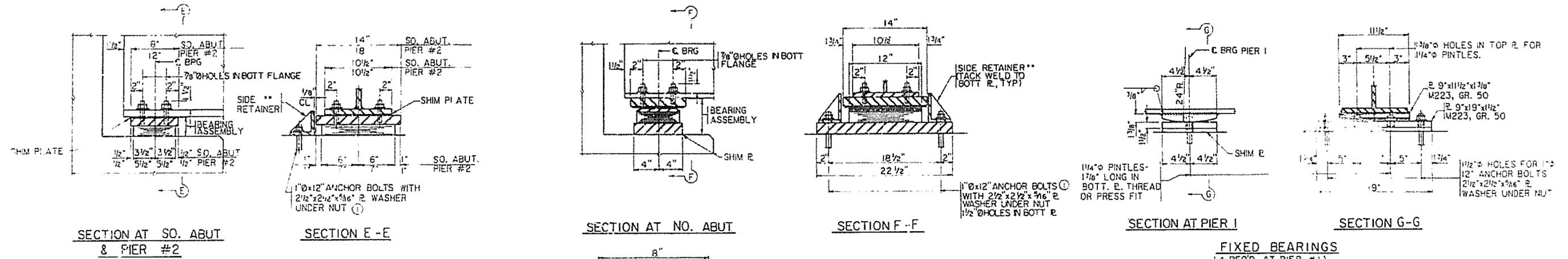
BEAM	F	G	H	J	K	L
1	3"	12'-8 3/8"	13'-3 1/4"	8"	12'-3 1/8"	10"
2	4"	12'-7 7/8"	13'-3 7/8"	8"	12'-3 1/2"	10"
3	5"	12'-7 5/8"	13'-3 1/8"	8"	12'-3 3/4"	10"
4	5"	12'-8 3/8"	13'-4"	8"	12'-4"	10"



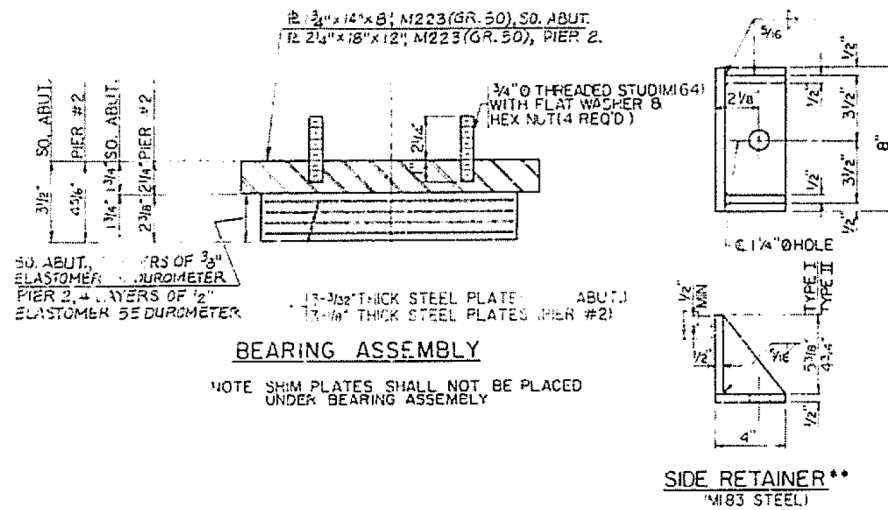
DIAPHRAGMS D AND D1 AND CONNECTION PLATES FOR DIAPHRAGMS D1 SHALL BE M183 STEEL. CONNECTION PLATES FOR DIAPHRAGMS D SHALL BE M223 GRADE 50 STEEL.

NOTE: HARDENED WASHERS SHALL BE REQ'D. OVER 1 3/8"

LOC.5 S.N. 090-0127

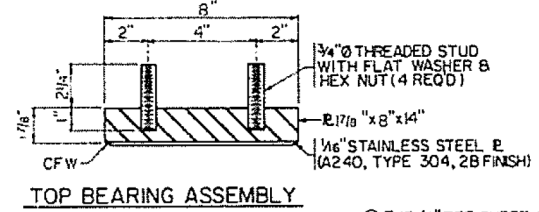


FIXED BEARINGS
(4 REQ'D AT PIER #1)

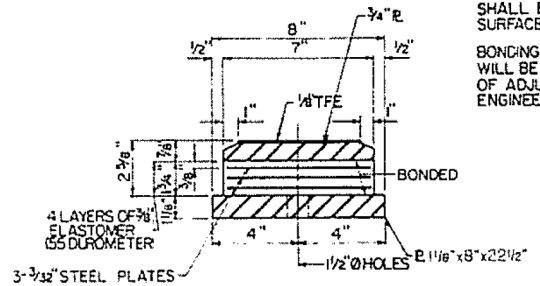


BEARING ASSEMBLY
NOTE SHIM PLATES SHALL NOT BE PLACED UNDER BEARING ASSEMBLY

SIDE RETAINER**
(A36 STEEL)



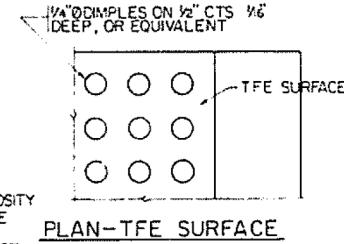
TOP BEARING ASSEMBLY



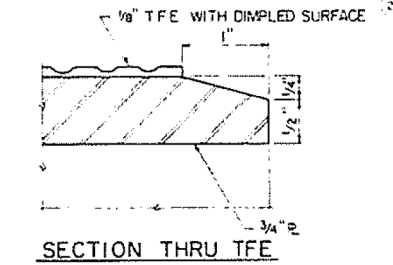
BOTTOM BEARING ASSEMBLY

NOTE (1) THE 1/8" TFE SHEET SHALL BE BONDED DIRECTLY TO THE TOP STEEL PLATE WITH A TWO-COMPONENT, MEDIUM VISCOSITY EPOXY RESIN, CONFORMING TO THE REQUIREMENTS OF THE FEDERAL SPEC MMM-A-134, TYPE I. THE BOND AGENT SHALL BE APPLIED ON THE FULL AREA OF THE CONTACT SURFACES.

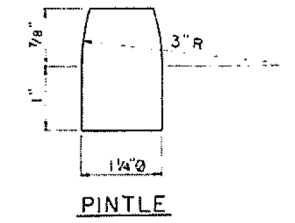
BONDING OF 1/8" TFE SHEET DURING VULCANIZING PROCESS WILL BE PERMITTED PROVIDED THE PROCESS AND METHOD OF ADJUSTING ASSEMBLY HEIGHT IS APPROVED BY THE ENGINEER.



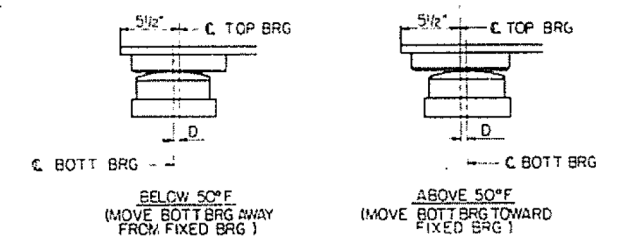
PLAN-TFE SURFACE



SECTION THRU TFE



PINTLE



BELOW 50°F
(MOVE BOTT BRG AWAY FROM FIXED BRG)

ABOVE 50°F
(MOVE BOTT BRG TOWARD FIXED BRG)

TYPE I ELASTOMERIC EXPANSION BEARING
(4 REQ'D AT SO. ABUTMENT)
(4 REQ'D AT PIER #2)

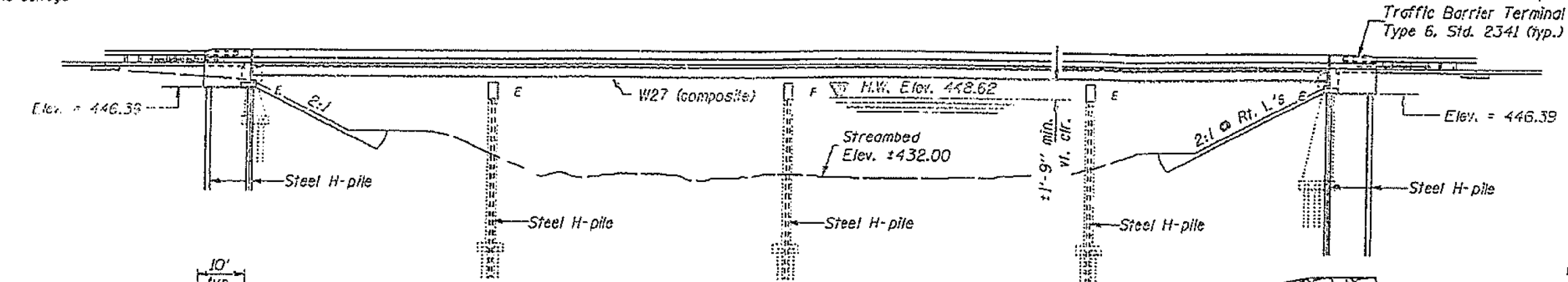
TYPE II TFE ELASTOMERIC EXPANSION BEARING
(4 REQ'D AT NO. ABUTMENT)

**SIDE RETAINERS TO BE USED AT INSIDE FACE OF EXTERIOR STRINGERS ONLY (TYPE I) AND AT EACH FACE OF EACH STRINGER (TYPE II). EQUIVALENT ROLLED ANGLE WITH STIFFENERS WILL BE ALLOWED IN LIEU OF WELDED PLATES.

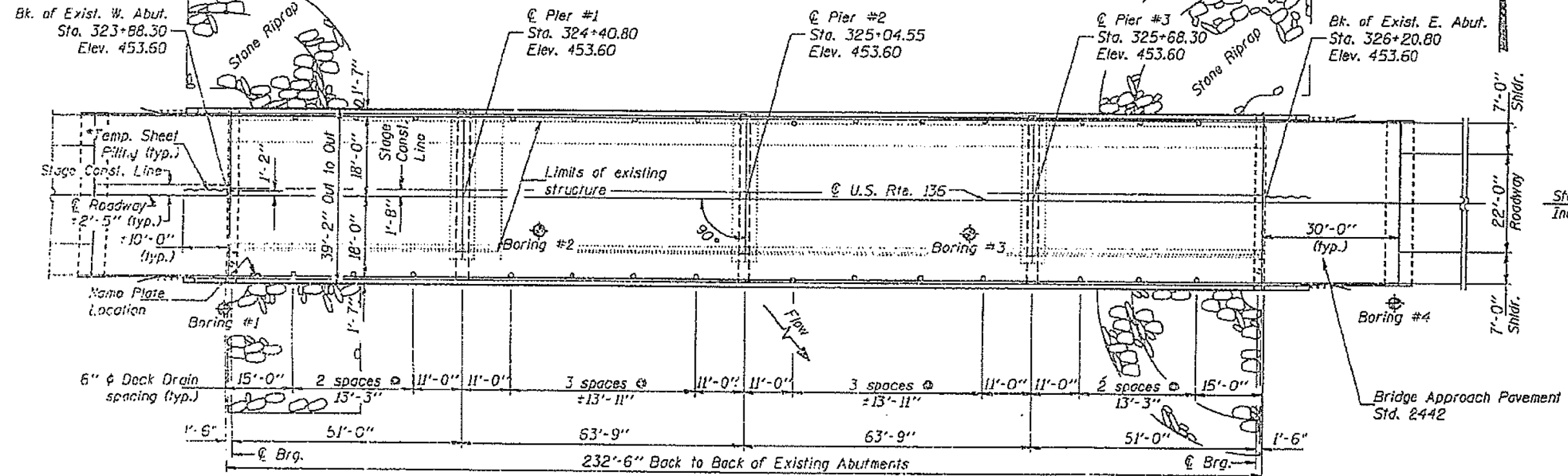
FILE NAME =	USER NAME = aubreys	DESIGNED -	REVISED -	STATE OF ILLINOIS DEPARTMENT OF TRANSPORTATION	LOCATION 5 BEARING DETAIL INFORMATION ONLY	F.A. RTÉ.	SECTION	COUNTY	TOTAL SHEETS	SHEET NO.		
Default	2014 Metalizing.dgn	DRAWN -	REVISED -			VAR D4 Bridge Metalizing 2014	Various	23	15	CONTRACT NO. 68B49		
	PLOT SCALE = 100.0000' / in.	CHECKED -	REVISED -			SCALE:	SHEET	OF	SHEETS	STA.	TO	STA.
	PLOT DATE = 2/14/2014	DATE -	REVISED -			ILLINOIS FED. AID PROJECT						

LOC.6 S.N. 029-0012

No salvage

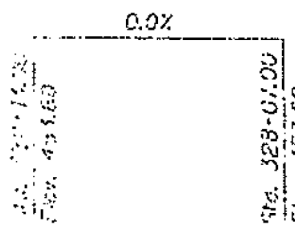


ELEVATION

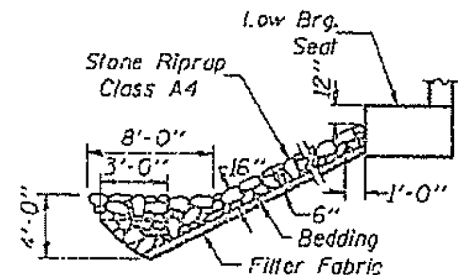


PLAN

For Temporary Sheet Piling
 Detail see Sheet 2 of 21.



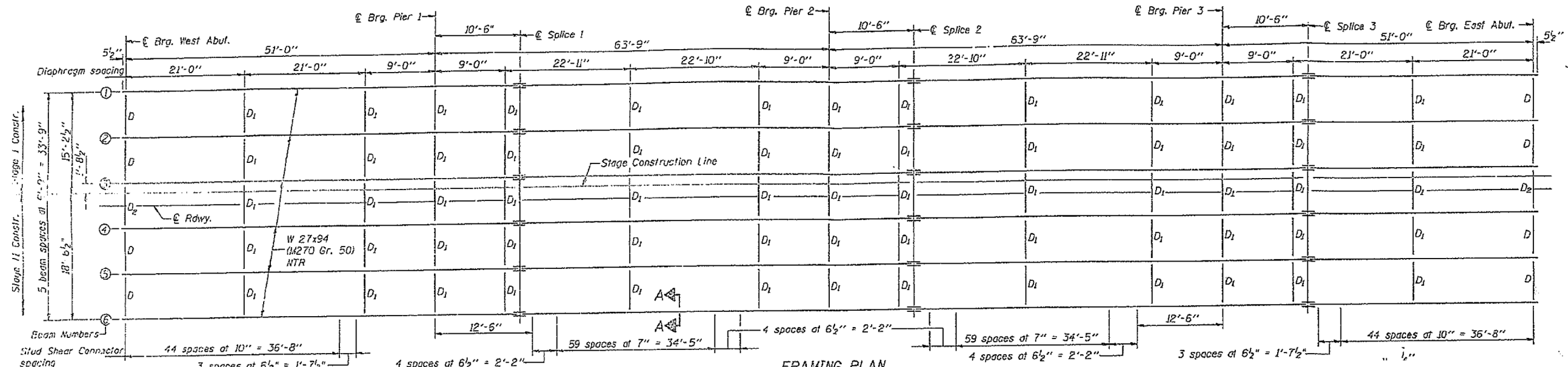
PROFILE GRADE
 (from 9' contour)



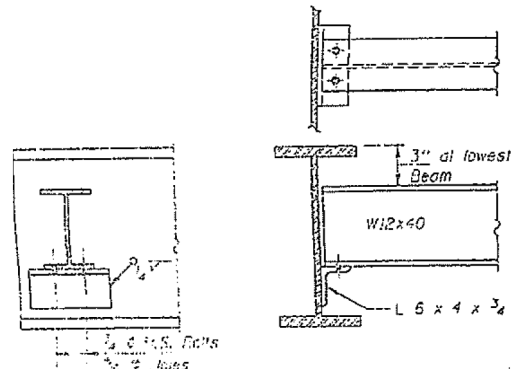
STONE RIPRAP ANCHOR DETAIL

FILE NAME =	USER NAME = aubreys	DESIGNED -	REVISED -	STATE OF ILLINOIS DEPARTMENT OF TRANSPORTATION	LOCATION 6 ELEVATION VIEW INFORMATION ONLY				F.A. RTE.	SECTION	COUNTY	TOTAL SHEETS	SHEET NO.				
Default	c:\users\aubreys\desktop\68b49\68b49	DRAWN -	REVISED -		SCALE:	SHEET	OF	SHEETS	STA.	TO	STA.	VAR	D4 Bridge Metalizing 2014	Illinois	Various	23	16
		PLOT SCALE = 100.0000' / in.	CHECKED -		REVISED -									CONTRACT NO. 68B49			
		PLOT DATE = 2/14/2014	DATE -		REVISED -									ILLINOIS FED. AID PROJECT			

LOC.6 S.N. 029-0012

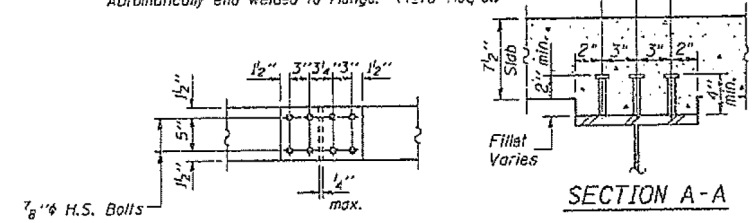


FRAMING PLAN
 $\frac{3}{4}$ " ϕ Granular or solid flux filled headed studs, conforming to the requirements of Art. 710.3B of the Std. Specs. Automatically end welded to Flange. (4176 Req'd.)

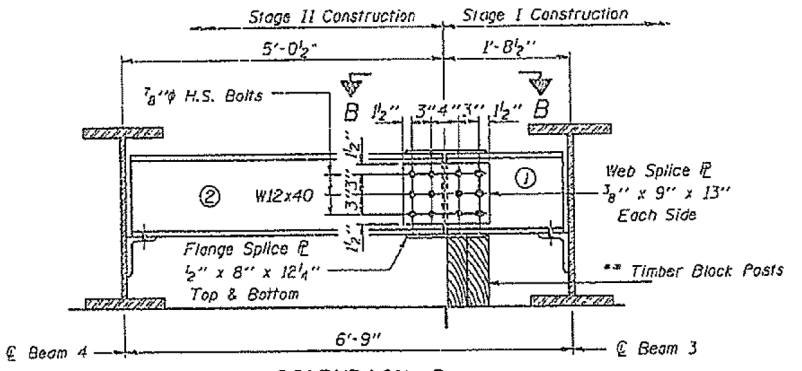


DIAPHRAGM D
8 Required

DIAPHRAGM D1
65 required



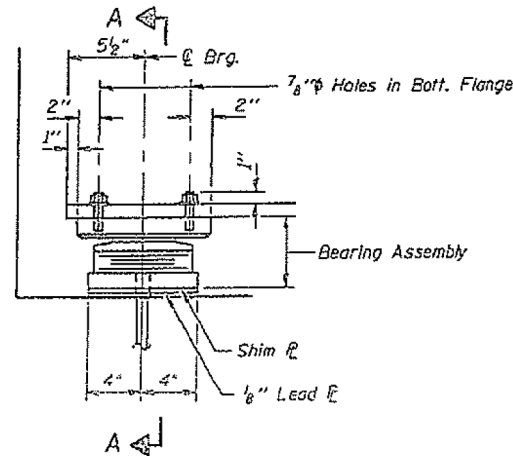
SECTION A-A



DIAPHRAGM D2
2 Required (Looking West)

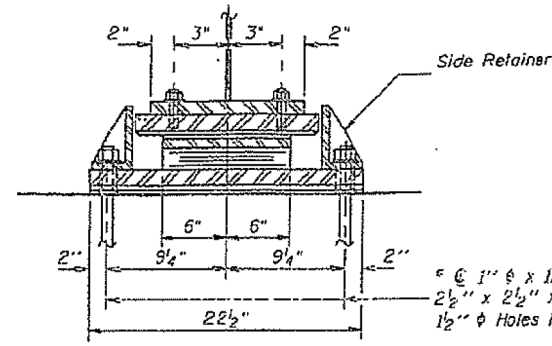
** Cost of Timber Block Posts is incidental to Structural Steel.

FILE NAME =	USER NAME = aubreys	DESIGNED -	REVISED -	STATE OF ILLINOIS DEPARTMENT OF TRANSPORTATION	LOCATION 6 FRAMING PLAN & DIAPHRAGM INFORMATION ONLY				F.A. R.T.E.	SECTION	COUNTY	TOTAL SHEETS	SHEET NO.			
Default	c:\users\aubreys\desktop\68b49\68b49_2014 Metalizing.dgn	DRAWN -	REVISED -		SCALE:	SHEET	OF	SHEETS	STA.	TO	STA.	VAR	D4 Bridge Metalizing 2014	Various	23	17
	PLOT SCALE = 100.0000' / in.	CHECKED -	REVISED -										CONTRACT NO. 68B49			
	PLOT DATE = 2/14/2014	DATE -	REVISED -										ILLINOIS FED. AID PROJECT			



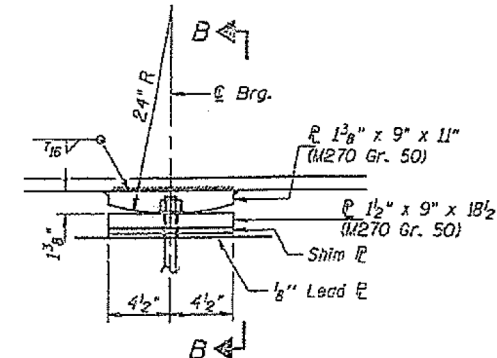
ELEVATION AT ABUT.

TYPE II TFE ELASTOMERIC EXP. BRG. E. & W. ABUTS.



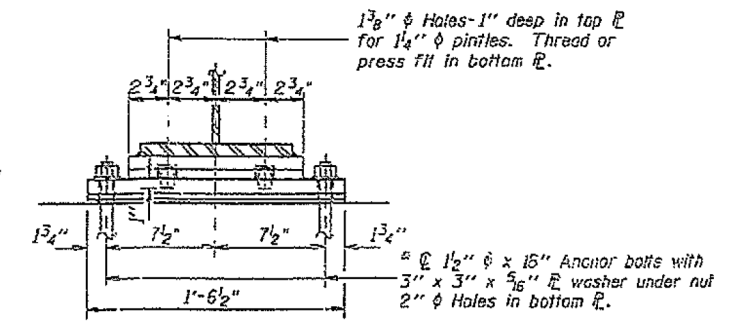
SECTION A-A

* Notes: Anchor bolts at fixed bearings may be built into the masonry. See sheet #12 of 21 for Anchor Bolt installation.

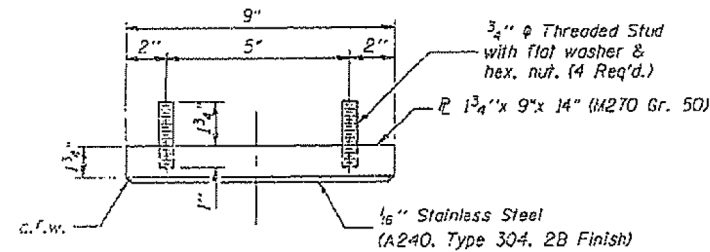


ELEVATION AT PIER 2

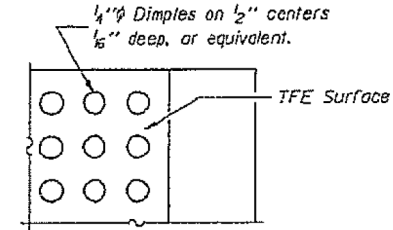
FIXED BEARING



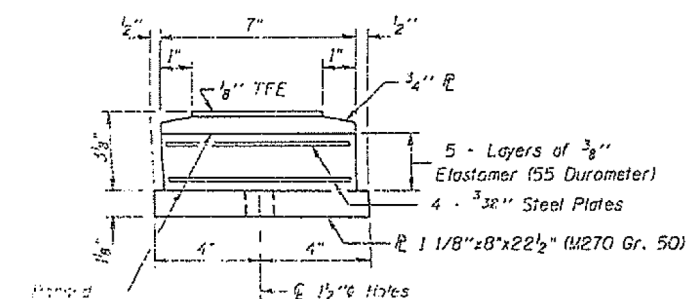
SECTION B-B



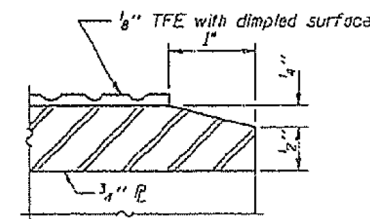
TOP BEARING ASSEMBLY



PLAN-TFE SURFACE



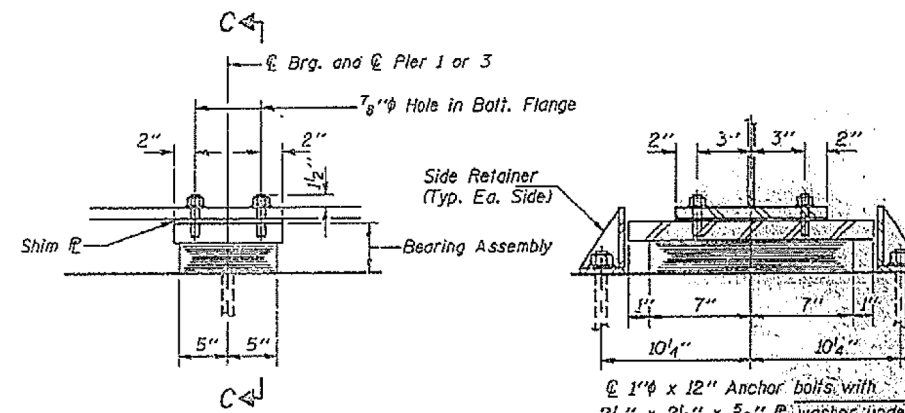
BOTTOM BEARING ASSEMBLY



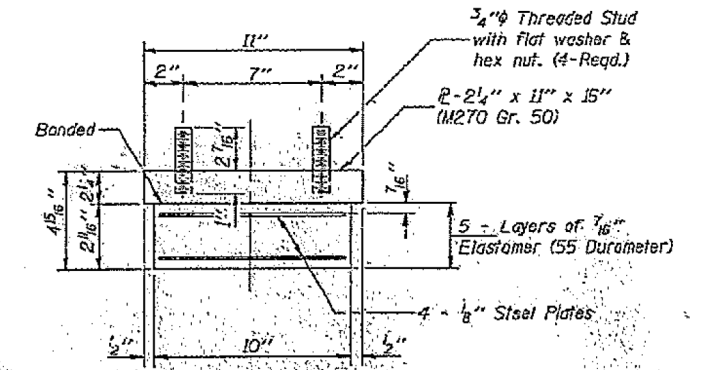
SECTION THRU TFE

Note: The 1/8" TFE sheet shall be banded directly to the top steel plate with a two-component, medium viscosity epoxy resin, conforming to the requirements of the Federal Specification MMM-A-134, Type 1. The bond agent shall be applied on the full area of the contact surfaces.

Banding of 1/8" TFE sheet during vulcanizing process will be permitted provided the process and method of adjusting assembly height is approved by the Engineer.

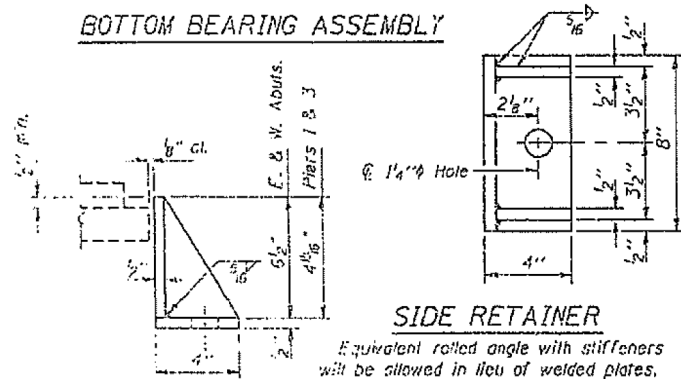


ELEVATION



BEARING ASSEMBLY (Piers 1 and 3)

Note: Shim plates shall not be placed under Bearing Assembly.



SIDE RETAINER

Equivalent rolled angle with stiffeners will be allowed in lieu of welded plates. Weight included with Structural Steel.

TYPE I ELASTOMERIC EXP. BRG. PIERS 1 AND 3

FILE NAME =	USER NAME = aubreys	DESIGNED -	REVISED -
ci:\users\aubreys\desktop\68b49\68b49	2014 Metalizing.dgn	DRAWN -	REVISED -
Default	PLOT SCALE = 100.0000' / in.	CHECKED -	REVISED -
	PLOT DATE = 2/14/2014	DATE -	REVISED -

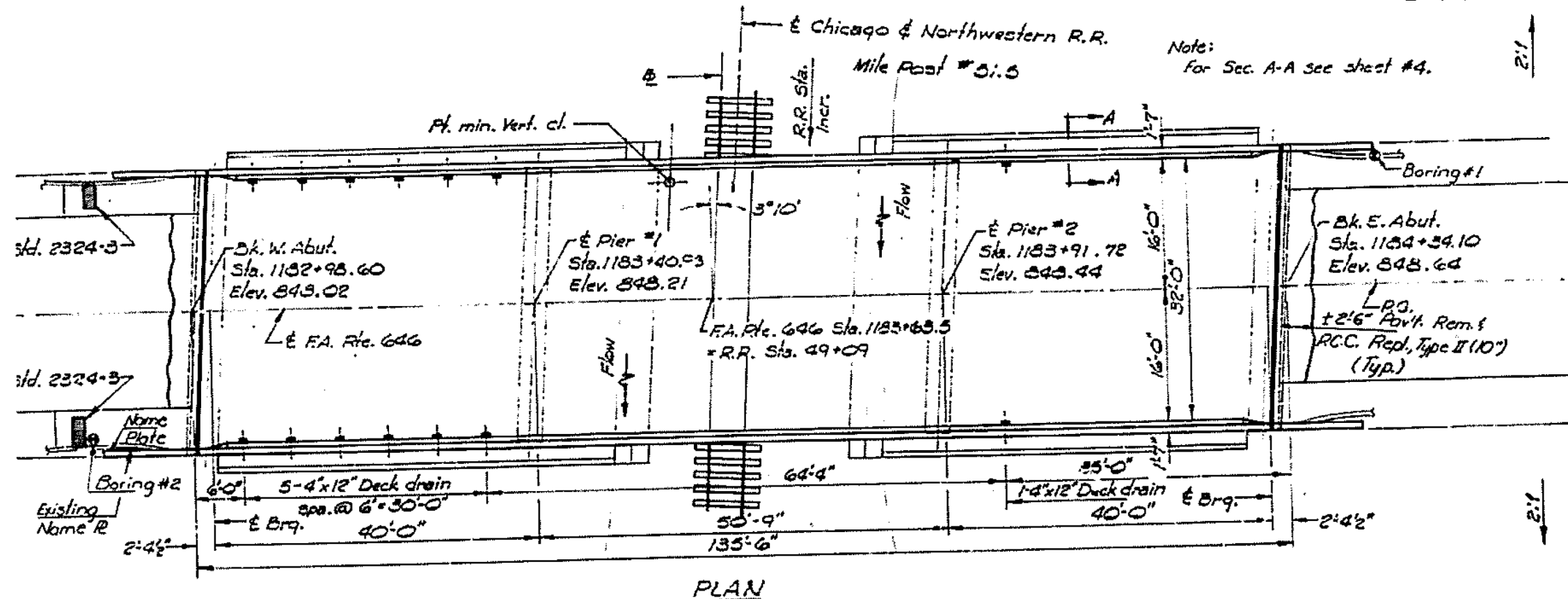
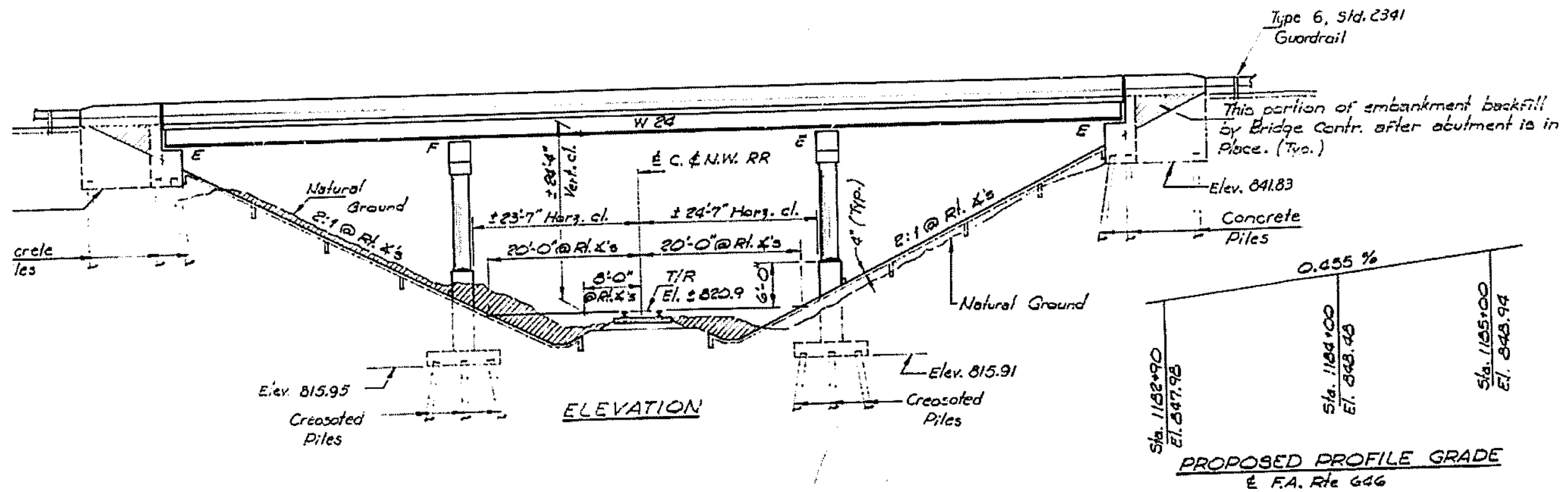
STATE OF ILLINOIS
DEPARTMENT OF TRANSPORTATION

LOCATION 6 BEARING DETAIL
INFORMATION ONLY

SCALE: SHEET OF SHEETS STA. TO STA.

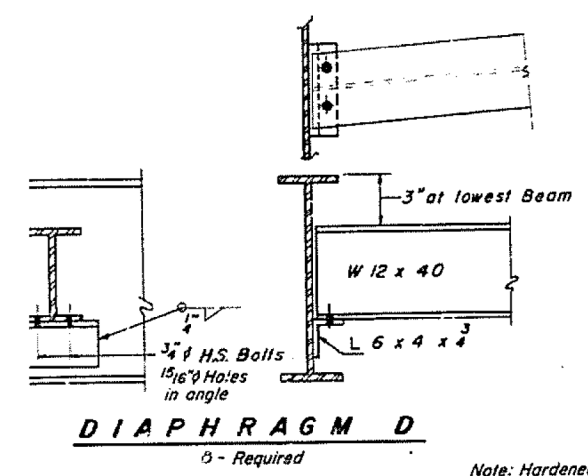
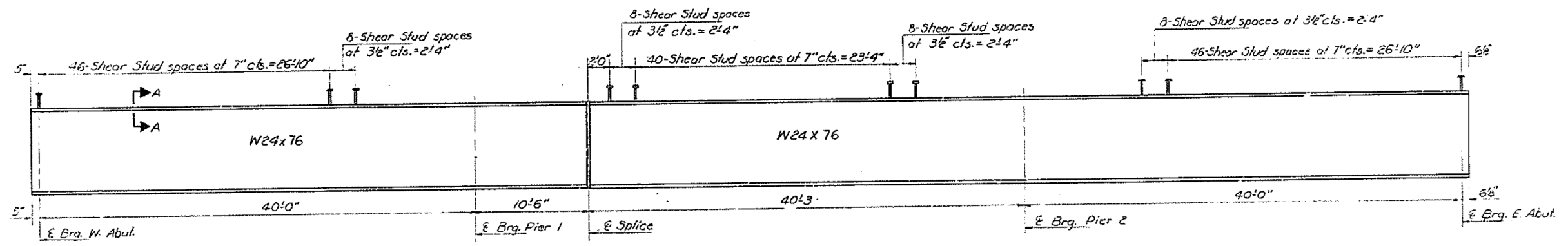
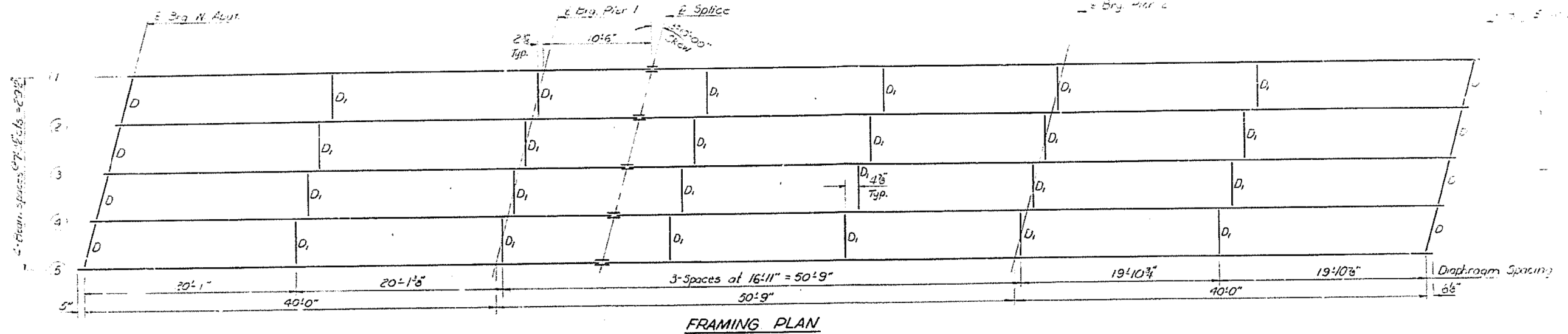
F.A. RTE.	SECTION	COUNTY	TOTAL SHEETS	SHEET NO.
VAR D4 Bridge Metalizing 2014		Various	23	18
			CONTRACT NO. 68B49	
ILLINOIS FED. AID PROJECT				

LOC.7 S.N. 062-0038

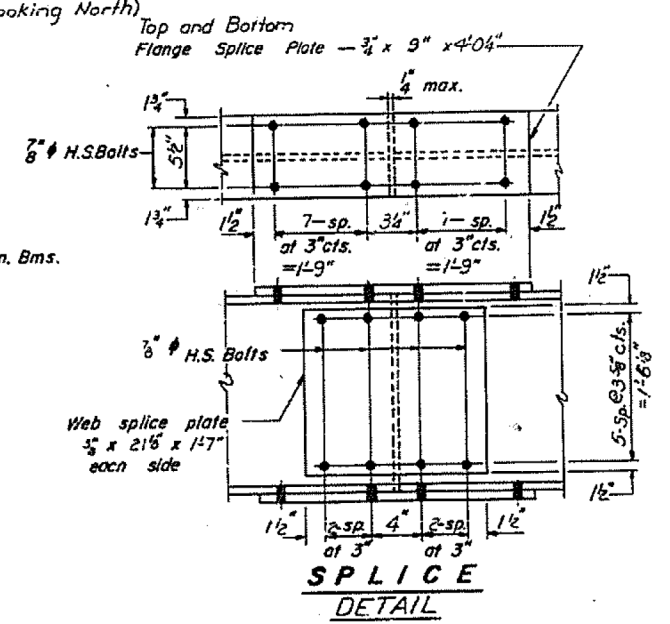
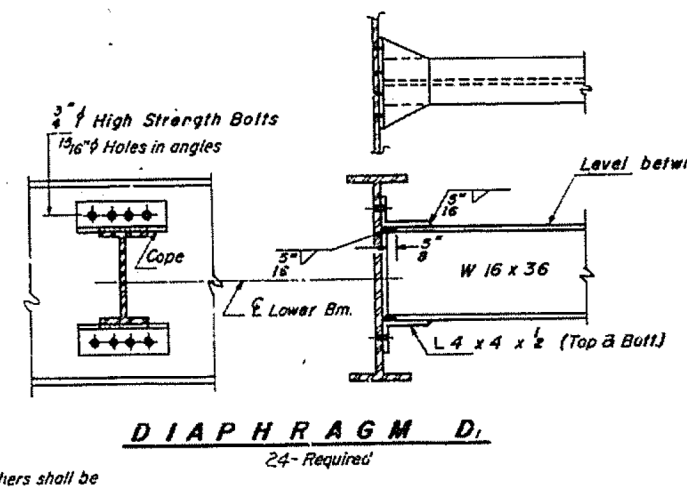


FILE NAME =	USER NAME = aubreys	DESIGNED -	REVISED -	STATE OF ILLINOIS DEPARTMENT OF TRANSPORTATION	LOCATION 7 ELEVATION VIEW INFORMATION ONLY				F.A. RTE.	SECTION	COUNTY	TOTAL SHEETS	SHEET NO.	
ct:\users\aubreys\desktop\68b49\68b49	2014 Metalizing.dgn	DRAWN -	REVISED -		SCALE:	SHEET	OF	SHEETS	STA.	TO	STA.	VAR	23	19
Default	PLOT DATE = 2/14/2014	CHECKED -	REVISED -										CONTRACT NO. 68B49	
											ILLINOIS FED. AID PROJECT			

LOC.7 S.N. 062-0038

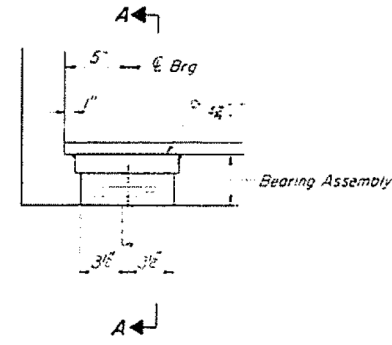


Note: Hardened washers shall be required over 1 5/16" holes in angles.

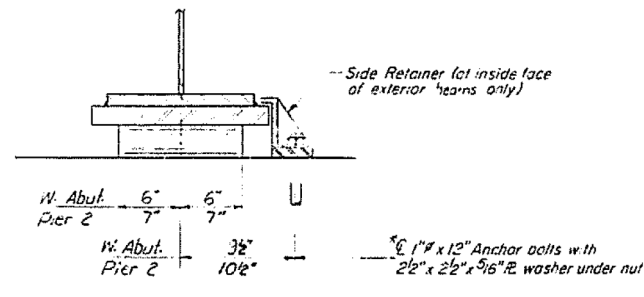


FILE NAME =	USER NAME = aubreys	DESIGNED -	REVISED -	STATE OF ILLINOIS DEPARTMENT OF TRANSPORTATION	LOCATION 7 FRAMING PLAN & DIAPHRAGM INFORMATION ONLY				F.A. RTE.	SECTION	COUNTY	TOTAL SHEETS	SHEET NO.
ci:\users\aubreys\desktop\68b49\68b49	2014 Metalizing.dgn	DRAWN -	REVISED -		VAR	D4 Bridge Metalizing 2014	Various	23	20	CONTRACT NO. 68B49			
Default	PLOT SCALE = 100.0000' / in.	CHECKED -	REVISED -		SCALE: SHEET OF SHEETS STA. TO STA.				ILLINOIS FED. AID PROJECT				
	PLOT DATE = 2/14/2014	DATE -	REVISED -										

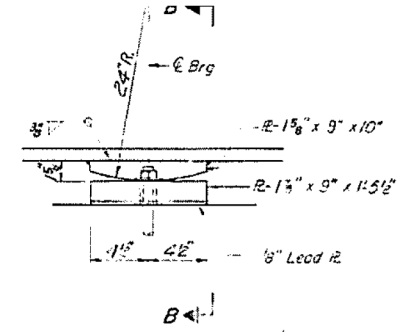
LOC.7 S.N. 062-0038



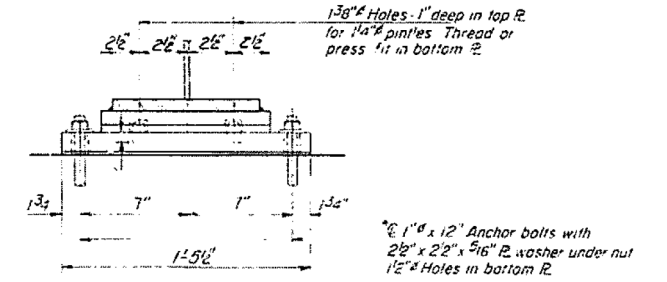
SECTION AT WEST ABUT.



SECTION A-A

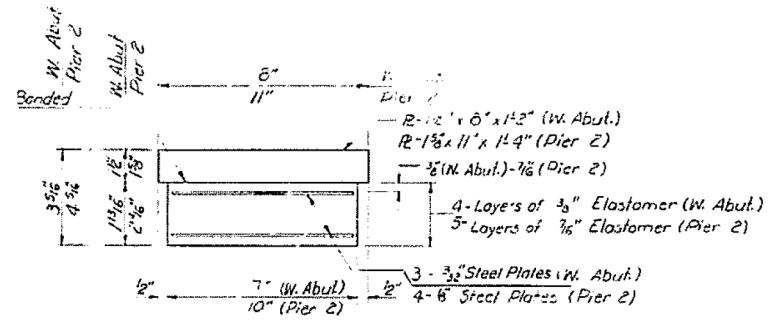


ELEVATION AT PIER 1

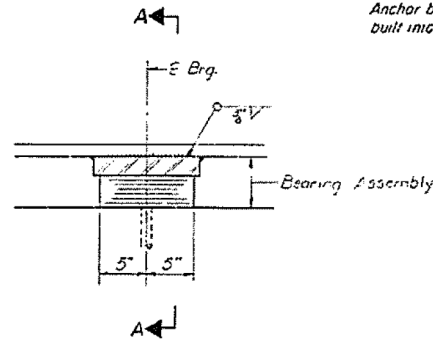


SECTION B-B

TYPE I ELASTOMERIC EXP. BRG.

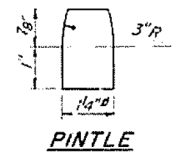


BEARING ASSEMBLY

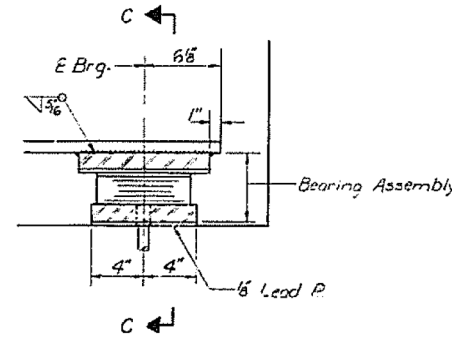


SECTION AT PIER 2

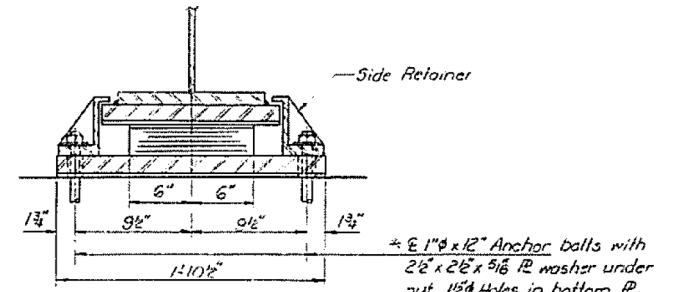
*Note: After beams have been erected holes at expansion bearings shall be drilled and anchor bolts grouted in place. Anchor bolts at fixed bearings may be built into the masonry.



PINTLE

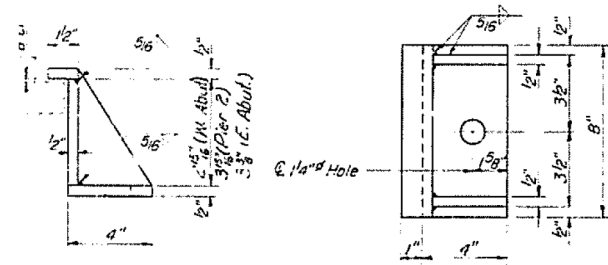


SECTION AT EAST ABUT.



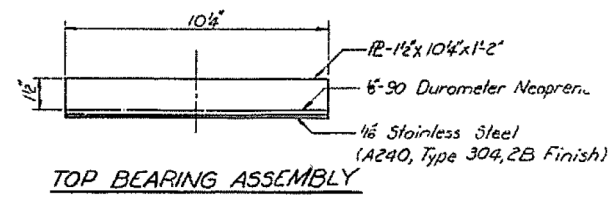
SECTION C-C

TYPE II TFE ELASTOMERIC EXP. BRG.

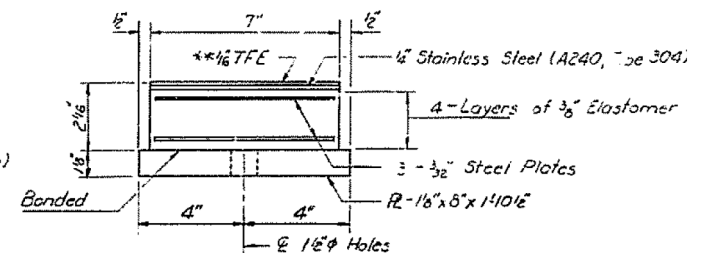


SIDE RETAINER

*Note: The 1/8" TFE sheet shall be bonded directly to the top steel laminate sheet with a two-component, medium viscosity epoxy resin, conforming to the requirements of the Federal Specification MMM-A-134, Type I. The bond agent shall be applied on the full area of the contact surfaces.



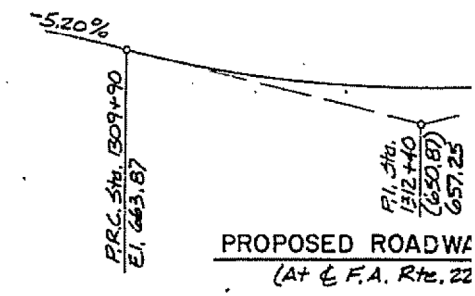
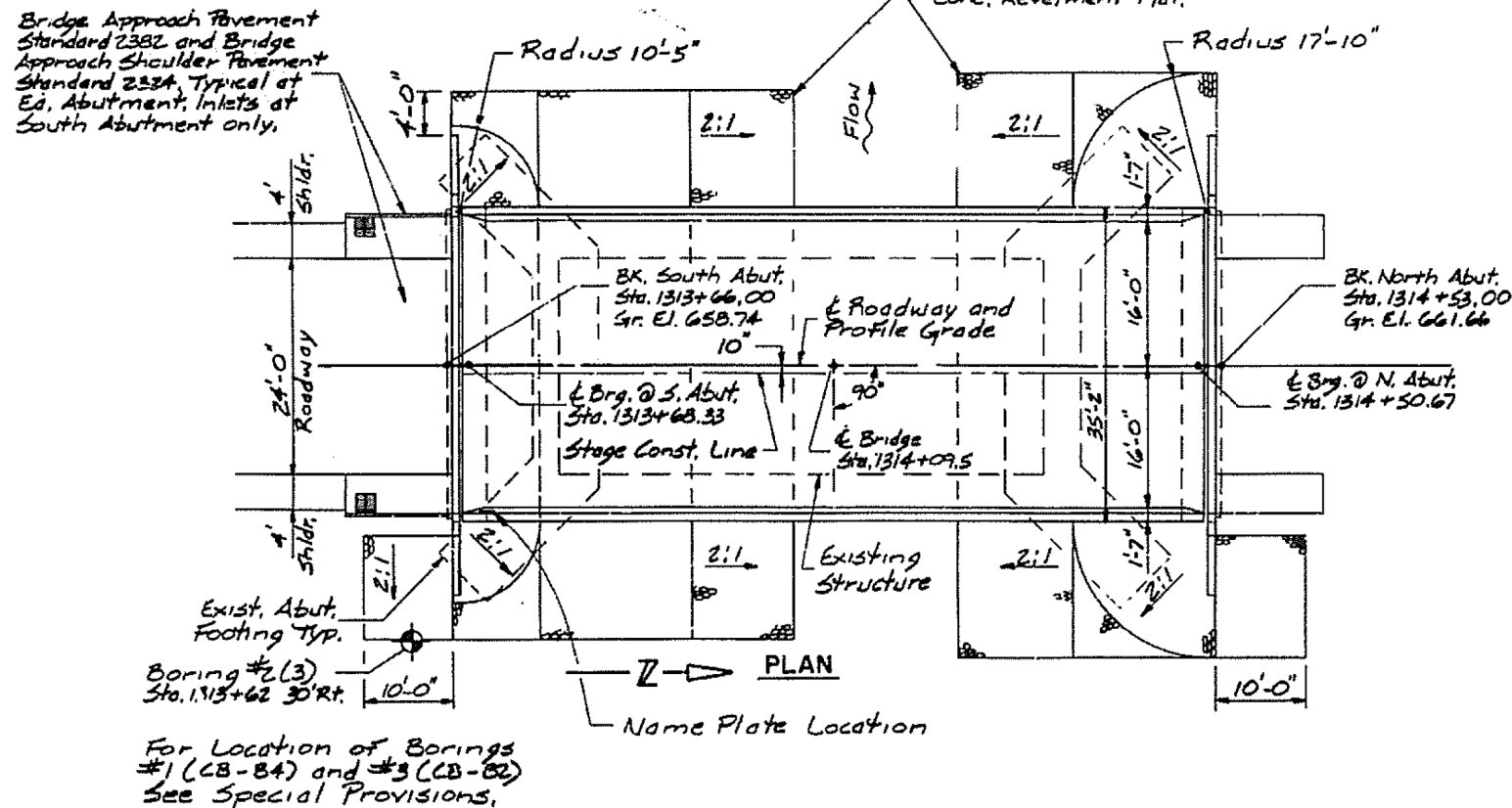
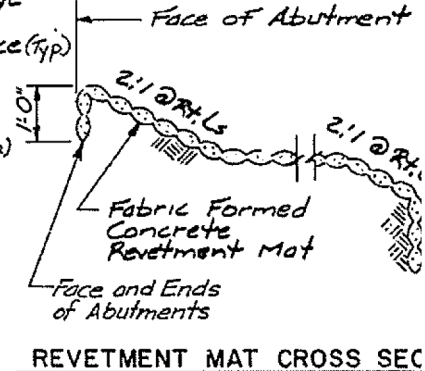
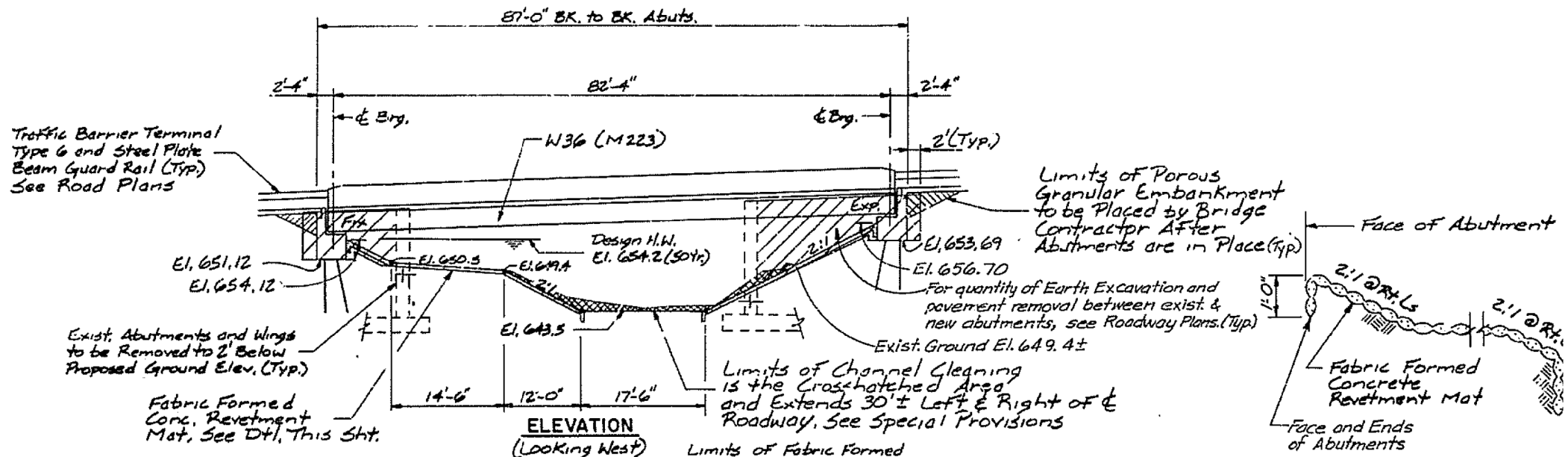
TOP BEARING ASSEMBLY



BOTTOM BEARING ASSEMBLY

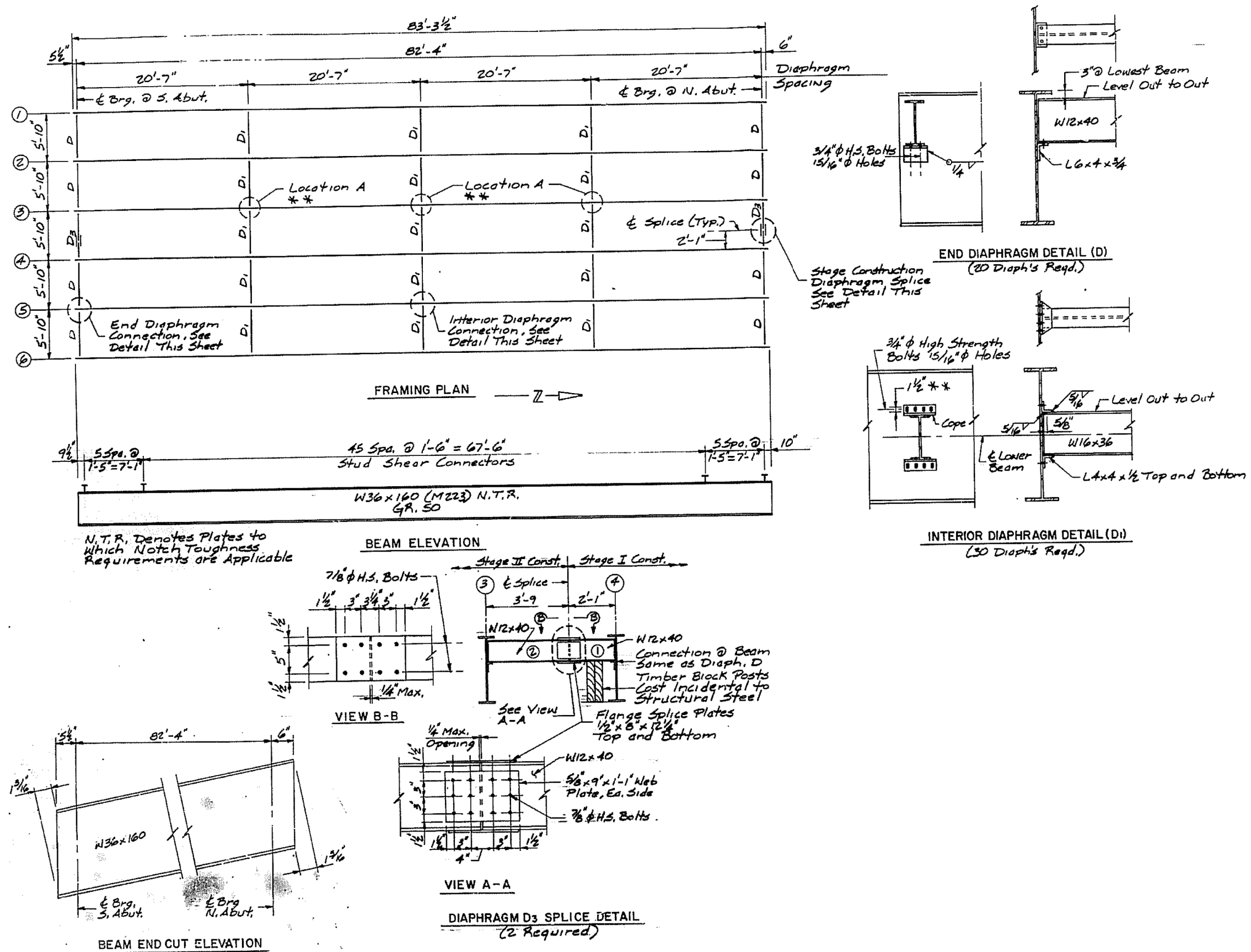
FILE NAME = c:\users\aubreygs\desktop\68b49\68B49	USER NAME = aubreygs	DESIGNED -	REVISED -	STATE OF ILLINOIS DEPARTMENT OF TRANSPORTATION	LOCATION 7 BEARING DETAIL INFORMATION ONLY			F.A. R.T.E.	SECTION	COUNTY	TOTAL SHEETS	SHEET NO.
	PLOT SCALE = 100.0000' / in.	CHECKED -	REVISED -					VAR	D4 Bridge Metalizing 2014	Various	23	21
Default	PLOT DATE = 2/14/2014	DATE -	REVISED -		SCALE:	SHEET	OF	SHEETS	STA.	TO	STA.	CONTRACT NO. 68B49
												ILLINOIS FED. AID PROJECT

LOC.8 S.N. 072-0160



FILE NAME = c:\users\aubreygs\desktop\68b49\68b49	USER NAME = aubreygs	DESIGNED -	REVISED -	STATE OF ILLINOIS DEPARTMENT OF TRANSPORTATION	LOCATION 8 ELEVATION VIEW INFORMATION ONLY			F.A. RTE.	SECTION	COUNTY	TOTAL SHEETS	SHEET NO.
		DRAWN -	REVISED -		SCALE:			SHEET	OF	SHEETS	STA.	TO
Default	2014 Metalizing.dgn	CHECKED -	REVISED -									
	PLOT SCALE = 100.0000' / in.	DATE -	REVISED -									
	PLOT DATE = 2/14/2014											
											CONTRACT NO. 68B49	ILLINOIS FED. AID PROJECT

LOC.8 S.N. 072-0160



FILE NAME =	USER NAME = aubreys	DESIGNED -	REVISED -	STATE OF ILLINOIS DEPARTMENT OF TRANSPORTATION	LOCATION 8 FRAMING PLAN & DIAPHRAGM INFORMATION ONLY	F.A. RTE.	SECTION	COUNTY	TOTAL SHEETS	SHEET NO.		
ci:\users\aubreys\desktop\68b49\68b49	2014 Metalizing.dgn	DRAWN -	REVISED -			VAR D4 Bridge Metalizing 2014	Various	23	23	CONTRACT NO. 68B49		
Default	PLOT SCALE = 100.0000' / in.	CHECKED -	REVISED -			SCALE:	SHEET	OF	SHEETS	STA.	TO	STA.
	PLOT DATE = 2/14/2014	DATE -	REVISED -			ILLINOIS FED. AID PROJECT						