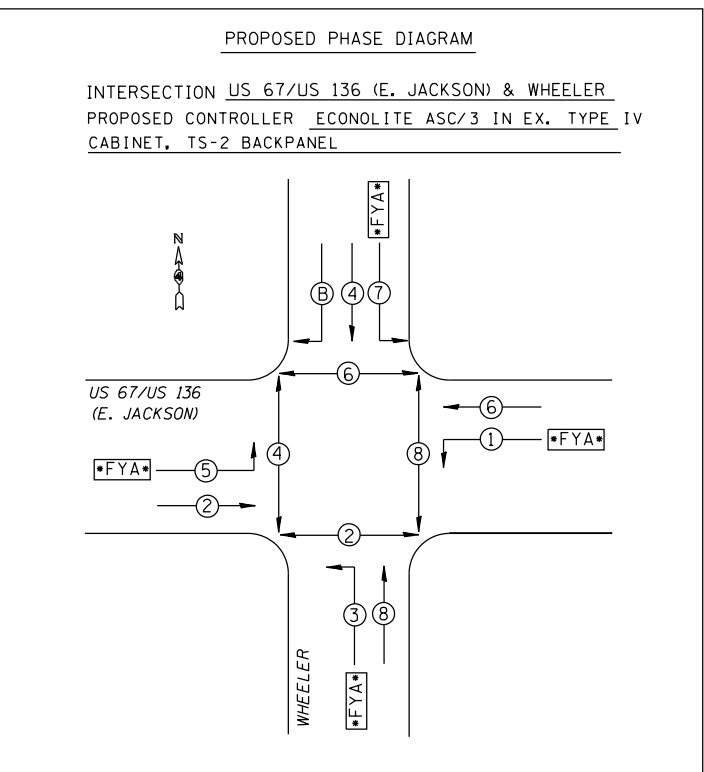
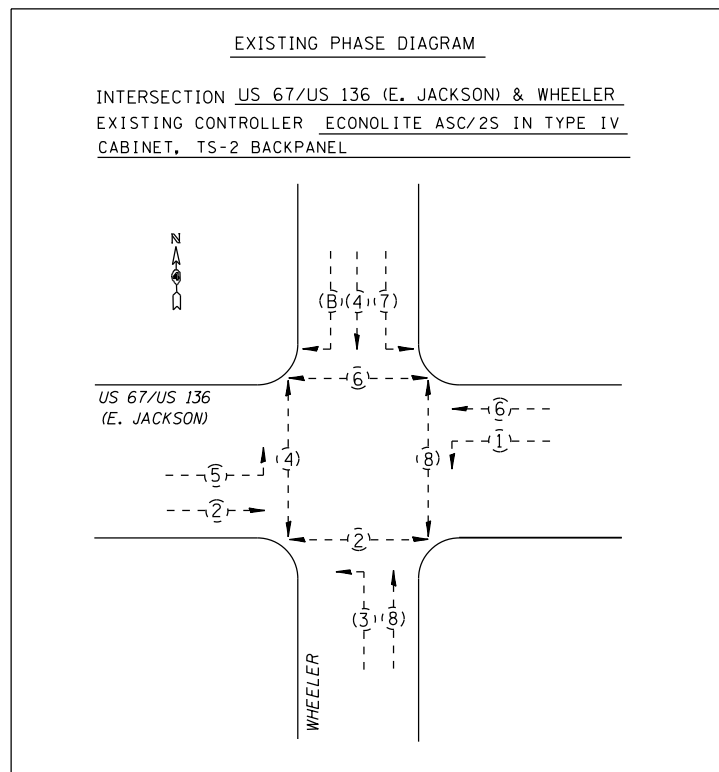
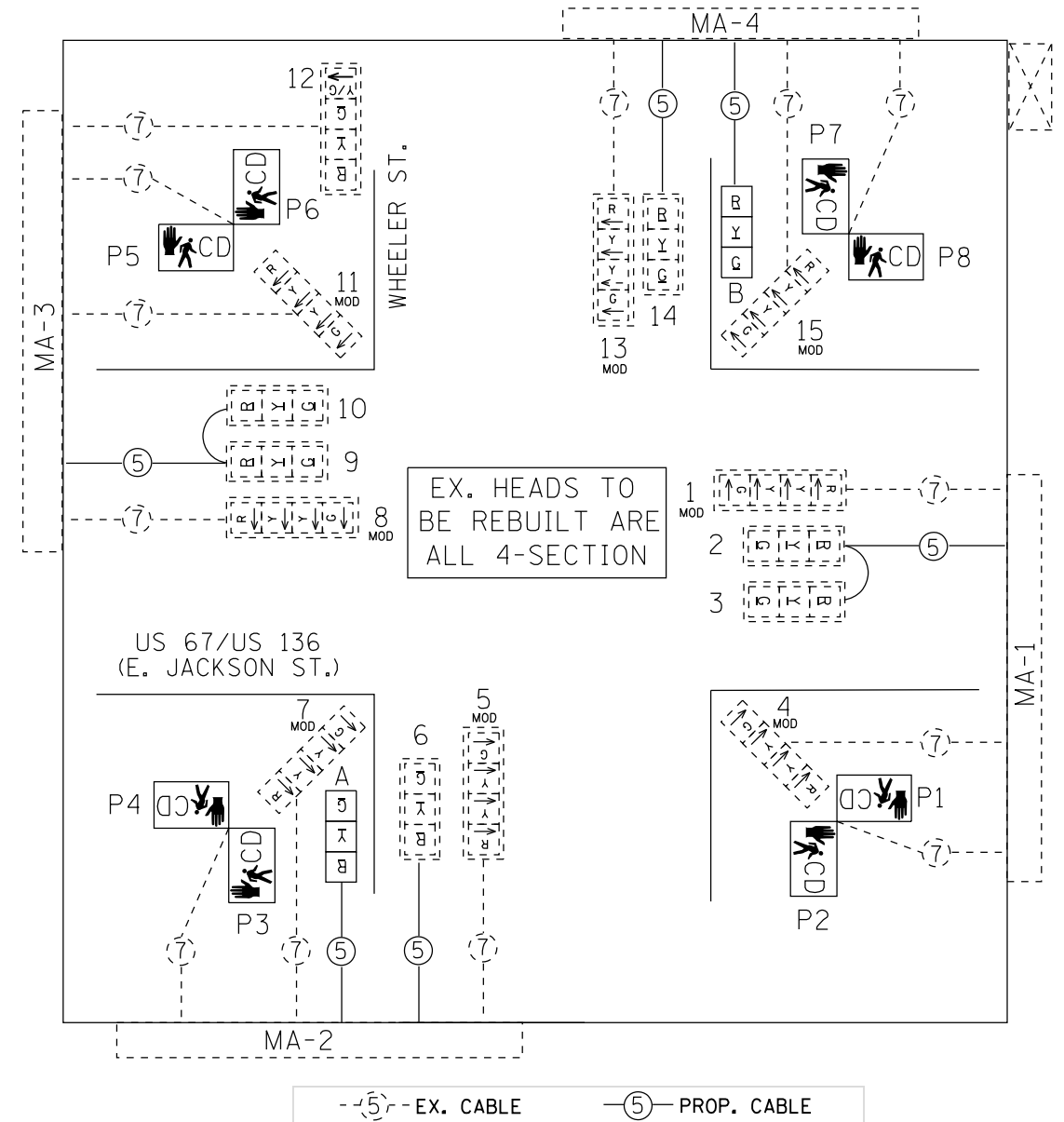


TRAFFIC SIGNAL HEAD SCHEDULE - US 67/US 136 (E. JACKSON) & WHEELER		
QTY.	TYPE	LOCATION
2.0 EACH	SH LED 1F 3S BM	A,B
7.0 EACH	SH LED RETROFIT	2,3,6,9,10,12,14
10.0 EACH	MOD EX TS BACKPLATE	1,2,3,5,6,8,9,10,13,14
8.0 EACH	REBUILD EX SIG HD LED	1,4,5,7,8,11,13,15 (ALL EX. HEADS ARE 4-SECTION)
4.0 EACH	PED SH LED 2F BM CDT	(P1,P2),(P3,P4),(P5,P6),(P7,P8)



BILL OF MATERIALS - US 67/US 136 (E. JACKSON) & WHEELER		
ITEM DESCRIPTION	UNIT	TOTAL QTY.
SIGN PANEL - TYPE 1	SQ FT	20.0
ELECTRIC CABLE IN CONDUIT, SIGNAL NO. 14 5C	FOOT	1157.0
SIGNAL HEAD, LED, 1-FACE, 3-SECTION, BRACKET MOUNTED	EACH	2.0
PEDESTRIAN SIGNAL HEAD, LED, 2-FACE, BRACKET MOUNTED WITH COUNTDOWN TIMER	EACH	4.0
MODIFY EXISTING TRAFFIC SIGNAL BACKPLATE	EACH	10.0
REBUILD EXISTING SIGNAL HEAD, LED	EACH	8.0
MODIFY EXISTING CONTROLLER CABINET	EACH	1.0
SIGNAL HEAD, LED, RETROFIT	EACH	7.0