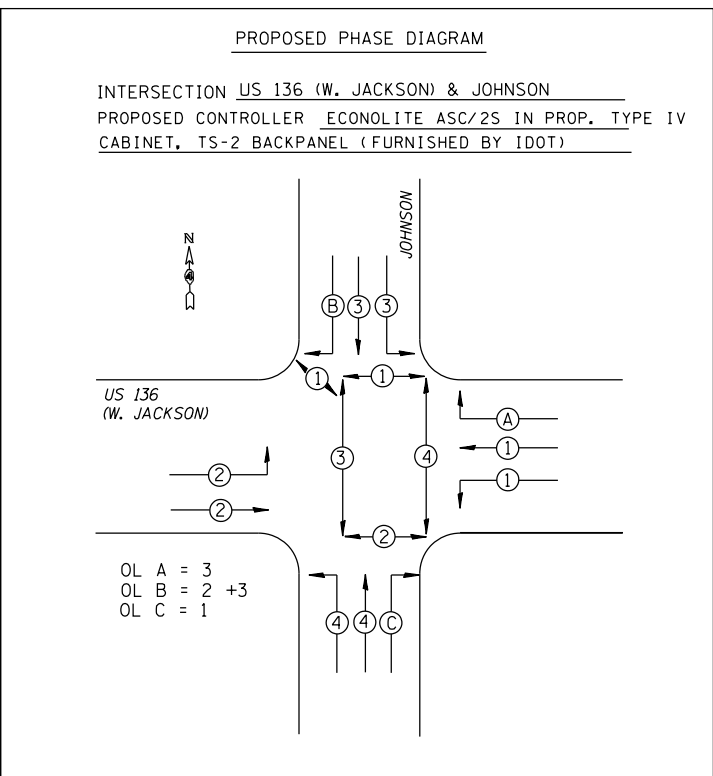
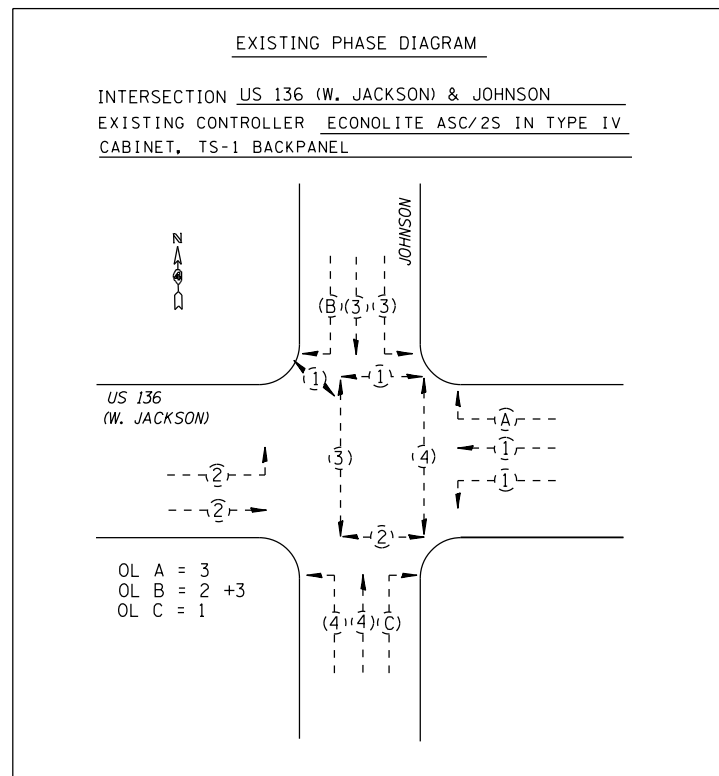
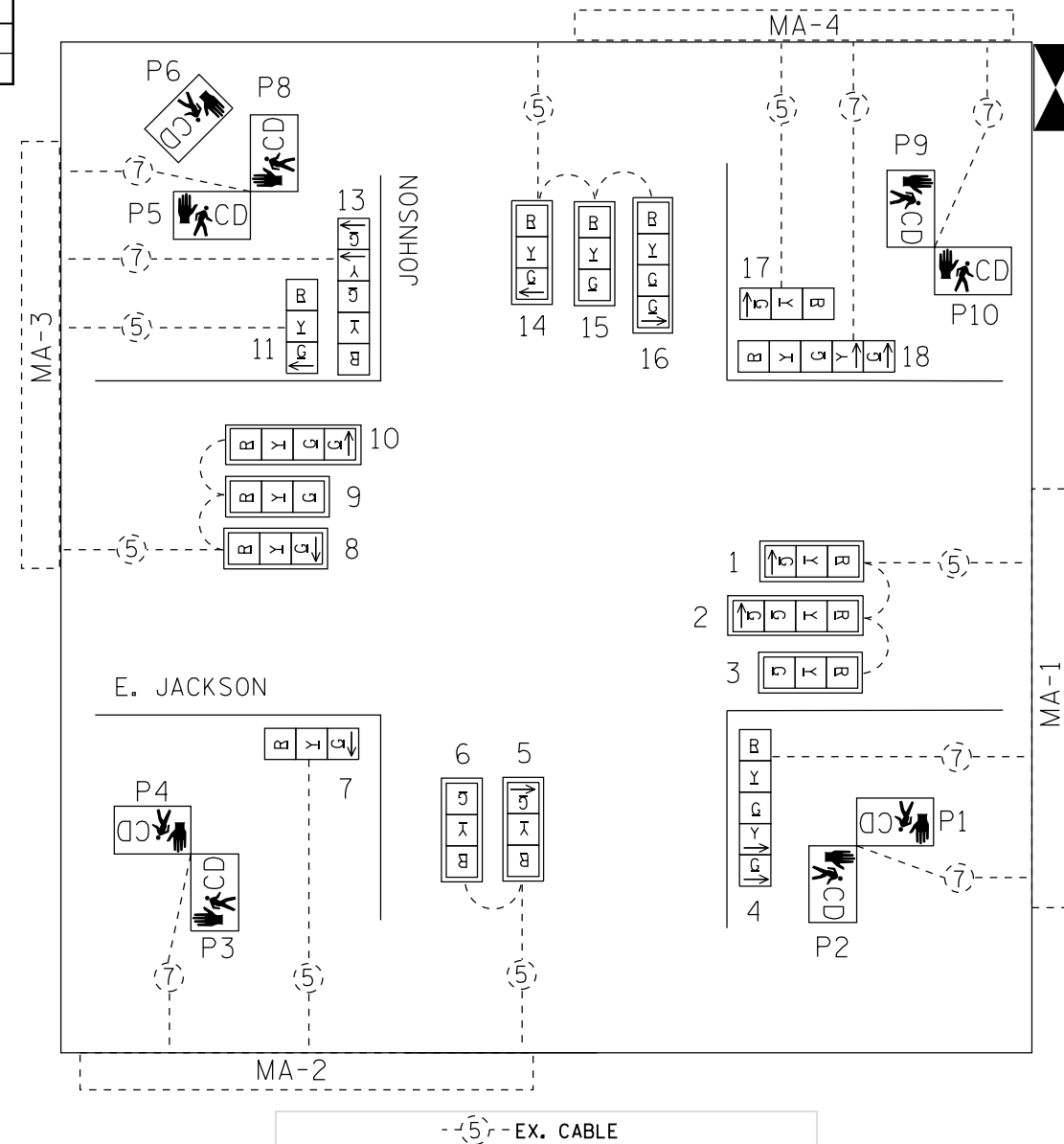
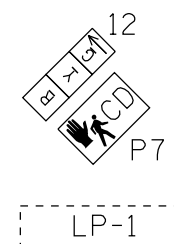


DETECTOR LOOP AND DETECTOR ASSIGNMENT SCHEDULE
US 67/US 136 (E. JACKSON) & JOHNSON

DETECTOR LOOP	ASSIGNED PHASE	CHANNELS REQUIRED
D-1A, D-1B	1	2
D-2A, D-2B, D-2C	2	3
D-2D, D2E	2 (ADV)	2
D-3A, D-3B, D-3C	3	3
D-3D, D-3E	3 (ADV)	2
D-4A, D-4B, D-4C	4	3
IDOT FURNISHED		15

TRAFFIC SIGNAL HEAD SCHEDULE - US 136 (W. JACKSON) & JOHNSON

QTY.	TYPE	LOCATION
8.0 EACH	SH LED 1F 3S MAM	1,3,5,6,8,9,14,15
4.0 EACH	SH LED 1F 3S BM	7,11,12,17
3.0 EACH	SH LED 1F 4S MAM	2,10,16
3.0 EACH	SH LED 1F 5S BM	4,13,18
11.0 EACH	TS BACKPLATE RET-REFL	1,2,3,5,6,8,9,10,14,15,16
2.0 EACH	PED SH LED 1F BM CDT	P6,P7
4.0 EACH	PED SH LED 2F BM CDT	(P1,P2),(P3,P4),(P5,P8),(P9,P10)



BILL OF MATERIALS - US 136 (W. JACKSON) & JOHNSON

ITEM DESCRIPTION	UNIT	TOTAL QTY.
SIGNAL HEAD, LED, 1-FACE, 3-SECTION, BRACKET MOUNTED	EACH	4.0
SIGNAL HEAD, LED, 1-FACE, 3-SECTION, MAST ARM MOUNTED	EACH	8.0
SIGNAL HEAD, LED, 1-FACE, 4-SECTION, MAST ARM MOUNTED	EACH	3.0
SIGNAL HEAD, LED, 1-FACE, 5-SECTION, BRACKET MOUNTED	EACH	3.0
PEDESTRIAN SIGNAL HEAD, LED, 1-FACE, BRACKET MOUNTED WITH COUNTDOWN TIMER	EACH	2.0
PEDESTRIAN SIGNAL HEAD, LED, 2-FACE, BRACKET MOUNTED WITH COUNTDOWN TIMER	EACH	4.0
TRAFFIC SIGNAL BACKPLATE, RETROREFLECTIVE	EACH	11.0
CONTROLLER CABINET TYPE IV, SPECIAL	EACH	1.0
CLOSED CIRCUIT TELEVISION DOME CAMERA, IP BASED (INSTALL ONLY)	EACH	1.0
CAT 5 ETHERNET CABLE	FOOT	87.0