

STATE OF ILLINOIS
 DEPARTMENT OF TRANSPORTATION
 DIVISION OF HIGHWAYS
**PROPOSED
 HIGHWAY PLANS**

F.A.P. RTE.	SECTION	COUNTY	TOTAL SHEETS	SHEET NO.
698	1261	WOODFORD	15	1
		ILLINOIS	CONTRACT NO. 68B63	

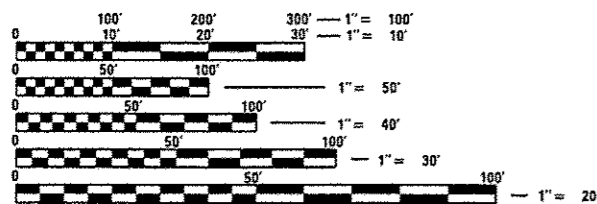
INDEX

1. COVER
2. GENERAL NOTES
- 3-4. TYPICAL SECTION
5. SUMMARY OF QUANTITY
- 6-8. SCHEDULE OF QUANTITIES
9. LINE DIAGRAM
10. REMOVAL & EXISTING
11. PROPOSED PLAN
- 12-15. STANDARDS (DISTRICT)
630101-D4
780001-D4

LIST OF HIGHWAY STANDARDS

202001-01	701006-05
482001-02	701011-04
630001-10	701201-04
630106-01	701301-04
630301-06	
635006-03	701306-03
635011-02	
642006	701326-04
701001-02	701901-03

ADT 3,000 (2010)
 MU - 7.5%
 SU - 5.3%



FULL SIZE PLANS HAVE BEEN PREPARED USING STANDARD ENGINEERING SCALES. REDUCED SIZED PLANS WILL NOT CONFORM TO STANDARD SCALES. IN MAKING MEASUREMENTS ON REDUCED PLANS, THE ABOVE SCALES MAY BE USED.

J.U.L.I.E.
 JOINT UTILITY LOCATION INFORMATION FOR EXCAVATION
 1-800-892-0123
 OR 811

PROJECT ENGINEER: LEONEL CRESPO (309) 671-3456

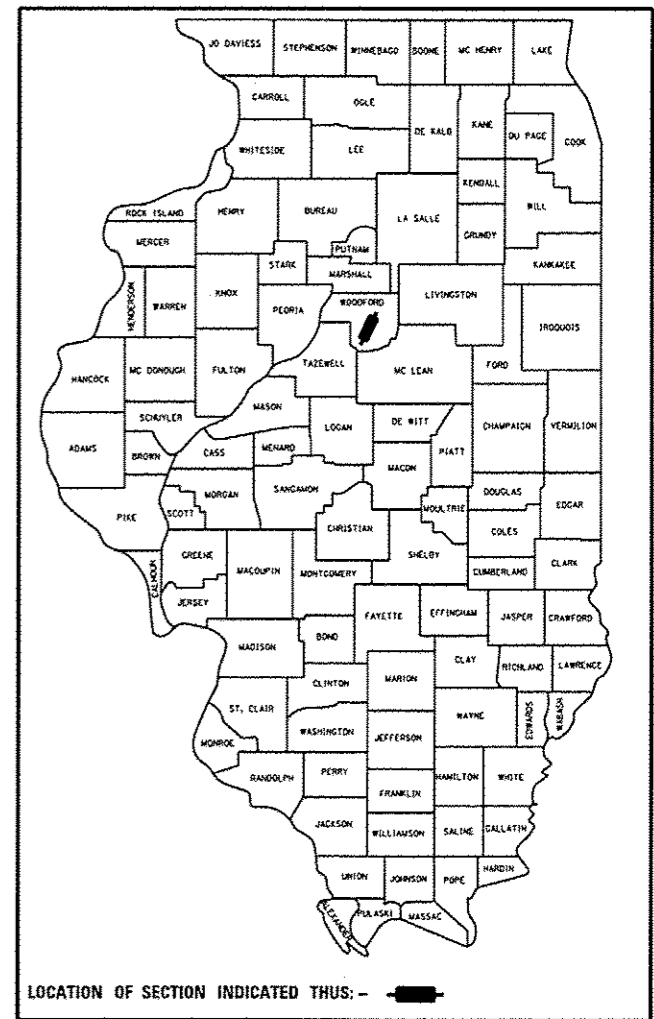
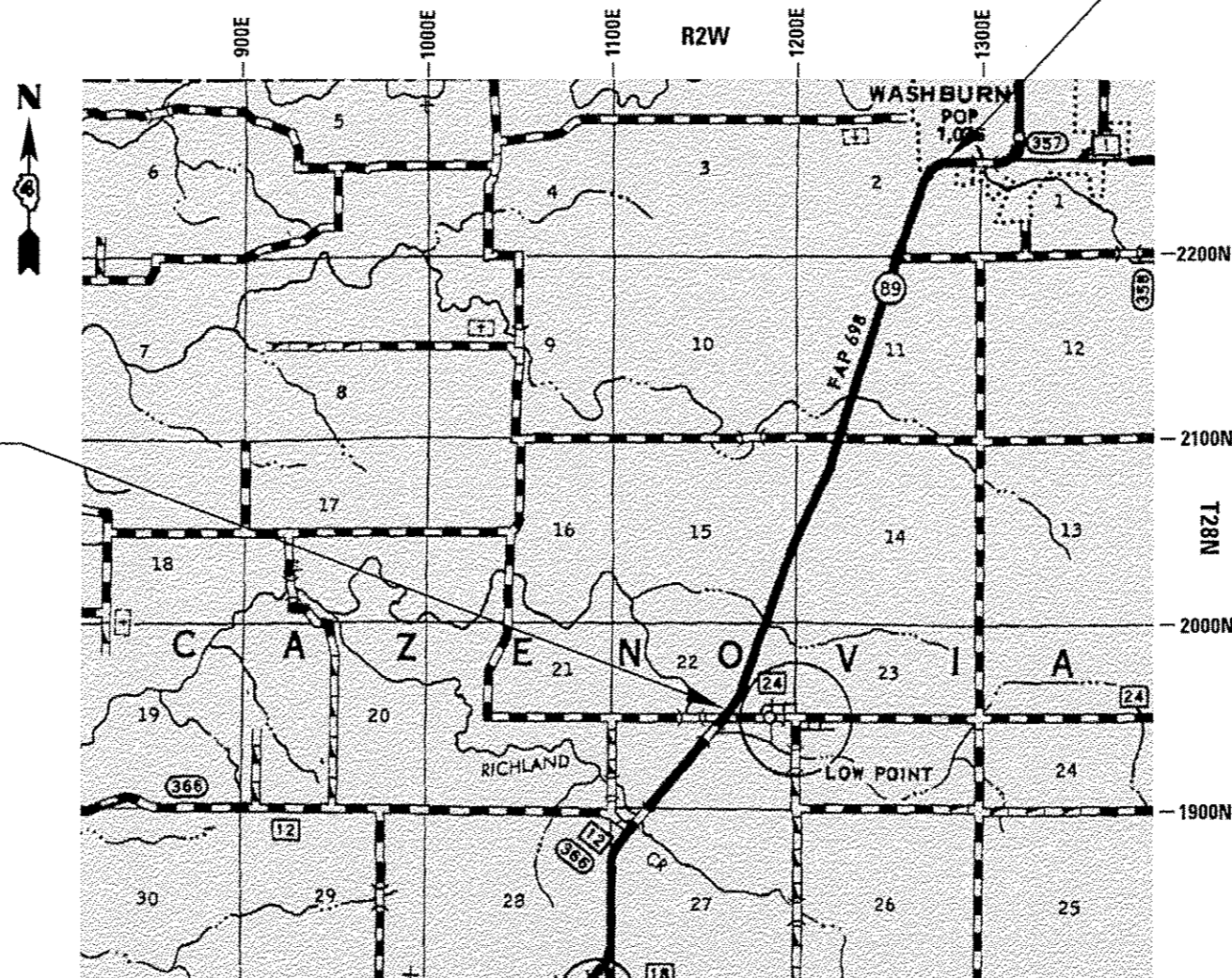
CATALOG NO. 034973
 CONTRACT NO. 68B63

FAP 698 ROUTE IL 89
 SECTION 1261
 PROJECT ACHSIP - 0698 (035)
 WOODFORD COUNTY

C-94-005-14

PROJECT ENDS
 Sta. 193 + 79

PROJECT BEGINS
 Sta. 30 + 81



JOB DESCRIPTION
 ADD SHOULDERS, RUMBLE STRIPS, AND UPGRADE EXISTING GAURDRAIL ALONG IL 89 FROM W. OF HILLCREST RD. IN WASHBURN TO EAST OF LOWPOINT ROAD.

STATE OF ILLINOIS
 DEPARTMENT OF TRANSPORTATION
 DIVISION OF HIGHWAYS

SUBMITTED *JAV 30/2014*

March 21, 2014
John D. Baranzelli, PE, BC
 DEPUTY DIRECTOR OF HIGHWAYS, REGION ENGINEER

March 21, 2014
Omer Osman, PE, BC
 ENGINEER OF DESIGN AND ENVIRONMENT
 DIRECTOR OF HIGHWAYS, CHIEF ENGINEER

**PRINTED BY THE AUTHORITY
 OF THE STATE OF ILLINOIS**

GROSS LENGTH = 16,225 FT. = 3.1 MILES

NET LENGTH = 16,225 FT. = 3.1 MILES