

**STATE OF ILLINOIS**  
**DEPARTMENT OF TRANSPORTATION**  
**DIVISION OF HIGHWAYS**  
**PROPOSED**  
**HIGHWAY PLANS**

F.A.P. RTE.	SECTION	COUNTY	TOTAL SHEETS	SHEET NO.
698	1261	WOODFORD	15	1
ILLINOIS			CONTRACT NO. 68B63	

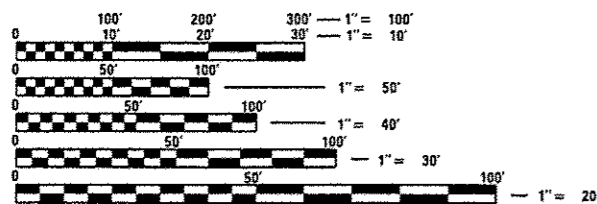
**INDEX**

1. COVER
2. GENERAL NOTES
- 3-4. TYPICAL SECTION
5. SUMMARY OF QUANTITY
- 6-8. SCHEDULE OF QUANTITIES
9. LINE DIAGRAM
10. REMOVAL & EXISTING
11. PROPOSED PLAN
- 12-15. STANDARDS (DISTRICT)  
630101-D4  
780001-D4

**LIST OF HIGHWAY STANDARDS**

202001-01	701006-05
482001-02	701011-04
630001-10	701201-04
630106-01	701301-04
630301-06	
635006-03	701306-03
635011-02	
642006	701326-04
701001-02	701901-03

ADT 3,000 (2010)  
 MU - 7.5%  
 SU - 5.3%



FULL SIZE PLANS HAVE BEEN PREPARED USING STANDARD ENGINEERING SCALES. REDUCED SIZED PLANS WILL NOT CONFORM TO STANDARD SCALES. IN MAKING MEASUREMENTS ON REDUCED PLANS, THE ABOVE SCALES MAY BE USED.

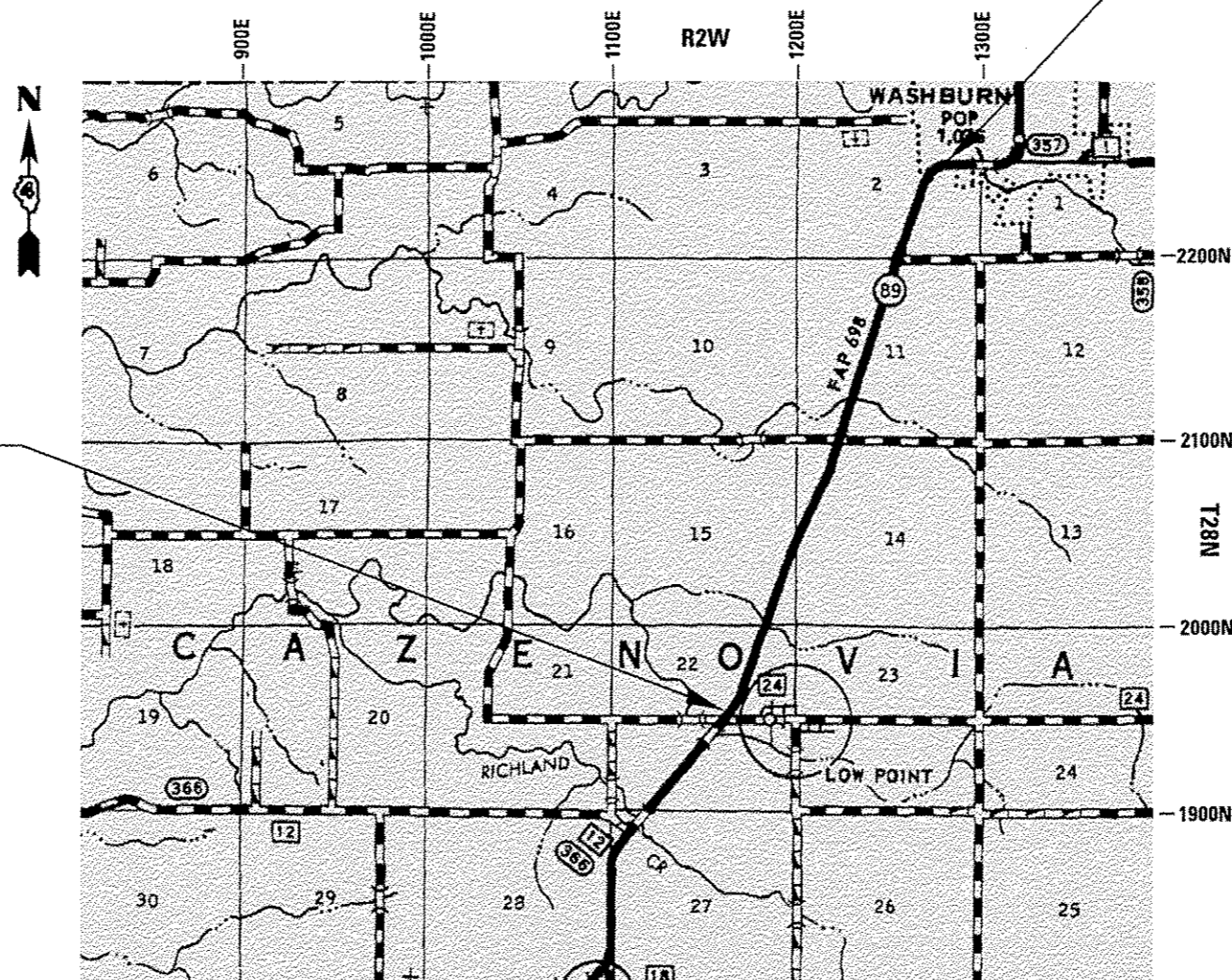
J.U.L.I.E.  
 JOINT UTILITY LOCATION INFORMATION FOR EXCAVATION  
 1-800-892-0123  
 OR 811

PROJECT ENGINEER: LEONEL CRESPO (309) 671-3456

CATALOG NO. 034973  
 CONTRACT NO. 68B63

**FAP 698 ROUTE IL 89**  
**SECTION 1261**  
**PROJECT ACHSIP - 0698 (035)**  
**WOODFORD COUNTY**

C-94-005-14



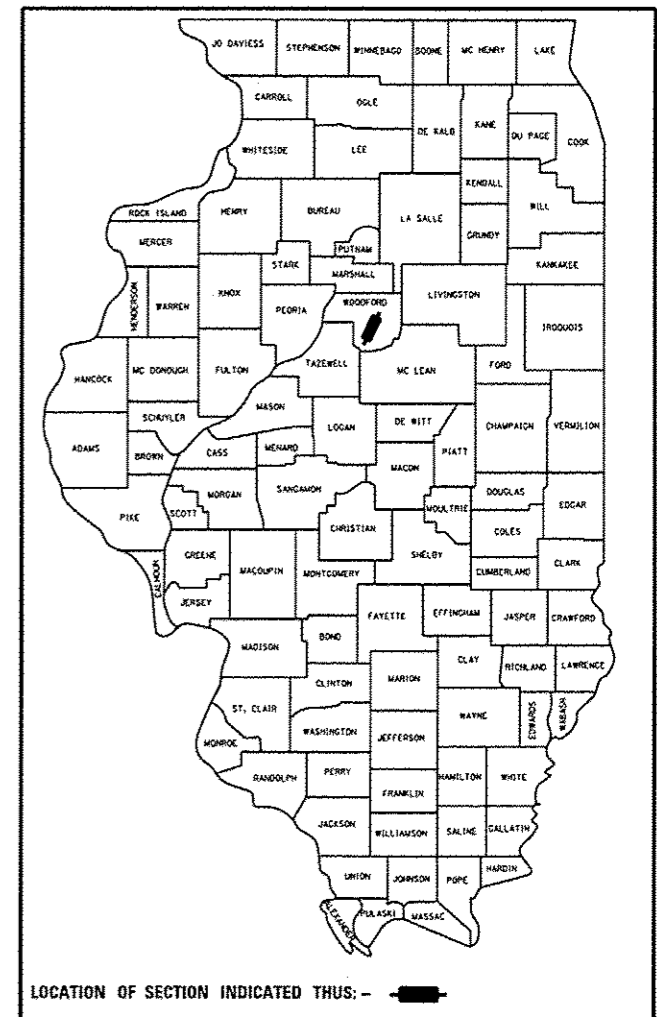
PROJECT BEGINS  
Sta. 30 + 81

PROJECT ENDS  
Sta. 193 + 79

GROSS LENGTH = 16,225 FT. = 3.1 MILES

NET LENGTH = 16,225 FT. = 3.1 MILES

D-94-003-14



**JOB DESCRIPTION**

ADD SHOULDERS, RUMBLE STRIPS, AND UPGRADE EXISTING GAURDRAIL ALONG IL 89 FROM W. OF HILLCREST RD. IN WASHBURN TO EAST OF LOWPOINT ROAD.

STATE OF ILLINOIS  
 DEPARTMENT OF TRANSPORTATION  
 DIVISION OF HIGHWAYS

SUBMITTED *JAV 30/2014*

DEPUTY DIRECTOR OF HIGHWAYS, REGION ENGINEER

*March 21, 2014*  
*John D. Baranzelli, PE, BC*  
 ENGINEER OF DESIGN AND ENVIRONMENT

*March 21, 2014*  
*Omer Osman, PE, BC*  
 DIRECTOR OF HIGHWAYS, CHIEF ENGINEER

**PRINTED BY THE AUTHORITY  
 OF THE STATE OF ILLINOIS**

# GENERAL NOTES

## PROPERTY OWNER ACCESS REQUIREMENT

Access must be maintained to all existing properties during construction per Article 107.09 unless arrangements are made in writing by the Contractor with the property owners with a copy to the Engineer for short-term closures.

## AGGREGATE WEDGE SHOULDERS, TYPE B

Aggregate Wedge Shoulders, Type B shall be required for all granular construction of side roads, entrances and mailbox turnouts, whether or not portions of the surfaces thus constructed are to be covered with a bituminous surface, except where noted differently on the plans.

## HOT-MIX ASPHALT MIXTURE REQUIREMENTS

Mixture Use(s):	Shoulders (All Lifts)
RAP % (MAX)**:	30%
AC/PG:	64-22
Design Air Voids:	4.0 % @ N = 50
Mixture Composition:	IL 9.5 or 12.5
Friction Aggregate:	Mix C

\*\* If the RAP option is selected, the asphalt cement grade may need to be adjusted; this will be determined by the Engineer.

## POLYMERIZED BITUMINOUS MATERIALS (PRIME COAT) RATES

Surface Type	Estimated Truck Application Rate	Residual Rate
Milled (HMA or PCC)	0.10 gal/sy (0.0004 ton/sy)	0.05 gal/sy
Existing Pavement	0.05 gal/sy (0.00022 ton/sy)	0.025 gal/sy
Fog Coat (between lifts)	0.05 gal/sy (0.00022 ton/sy)	0.025 gal/sy

## ENVIRONMENTAL REVIEWS

Prior to the use of any proposed borrow areas, use areas (temporary access roads, detours, run-arounds, etc.) and/or waste areas, the Contractor shall file the required environmental resource request surveys according to Section 107.22 of the Standard Specifications. These surveys are required in order for the Department to conduct cultural and biological resource surveys for the proposed site.

Prior to any waste materials being removed from the construction site the required environmental resource surveys will need to be obtained and filed by the Contractor. Excess waste products removed from the construction site shall be disposed of as required in Section 202.03 of the Standard Specifications.

Any protruding metal bars shall be removed prior to the disposal of broken concrete at approved disposal sites.

The required environmental resource documentation shall include the following:

- \* BDE Form 2289 (Environmental Survey Request)
- \* A location map showing the size limits & location of the use area
- \* Signed property owner agreement form - D4 P10100
- \* Color photographs depicting the use area
- \* Borrow Area Entry Agreement form - D4 P10101

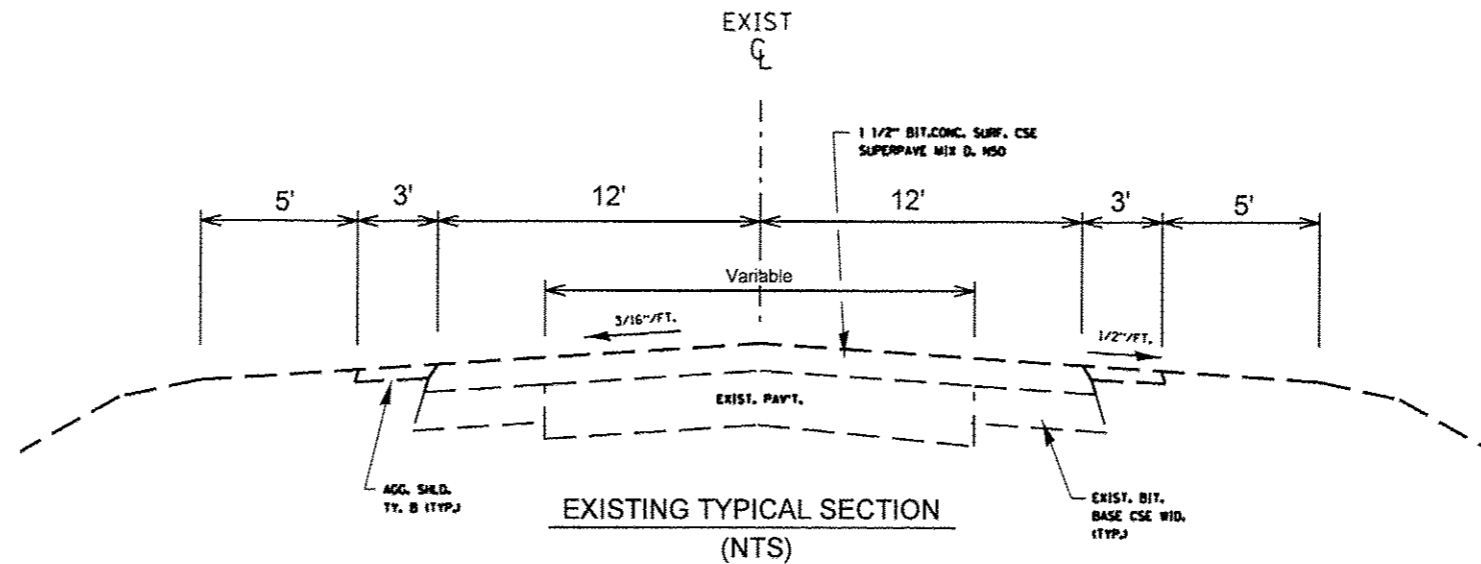
Please note that a minimum of two weeks shall be allowed for the District to obtain the required environmental clearances.

## COMMITMENTS

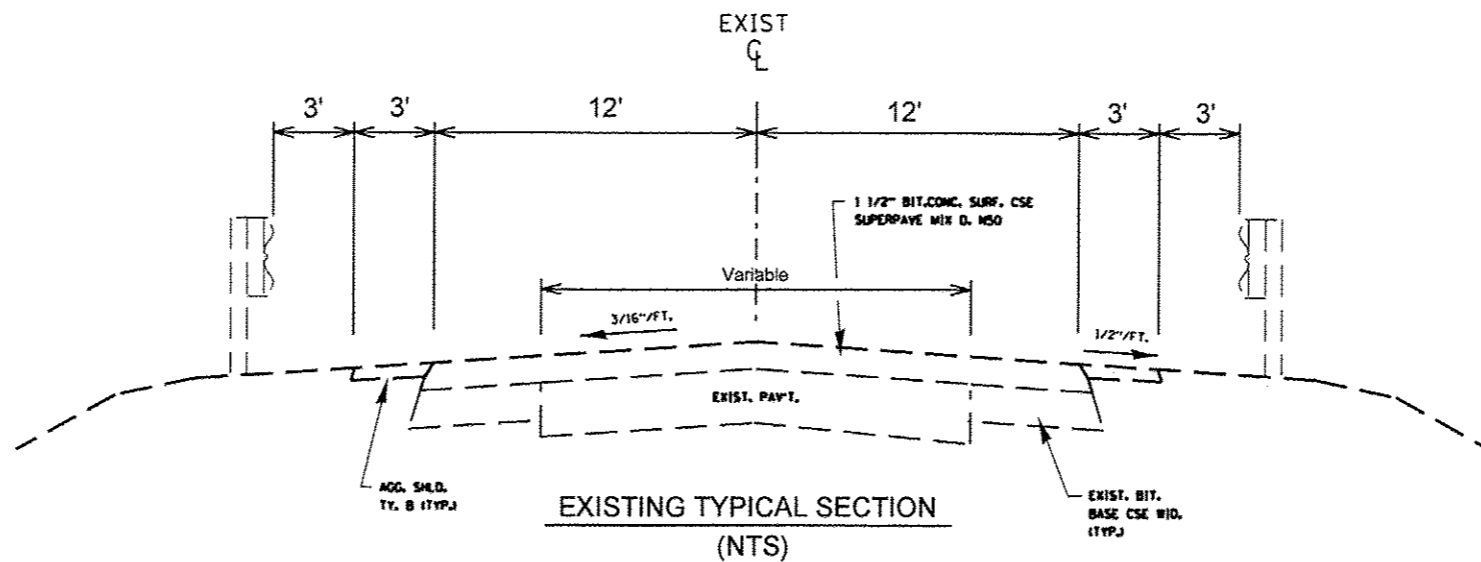
There are no commitments for this project.

## STATUS OF UTILITIES

There are no utilities to be relocated.

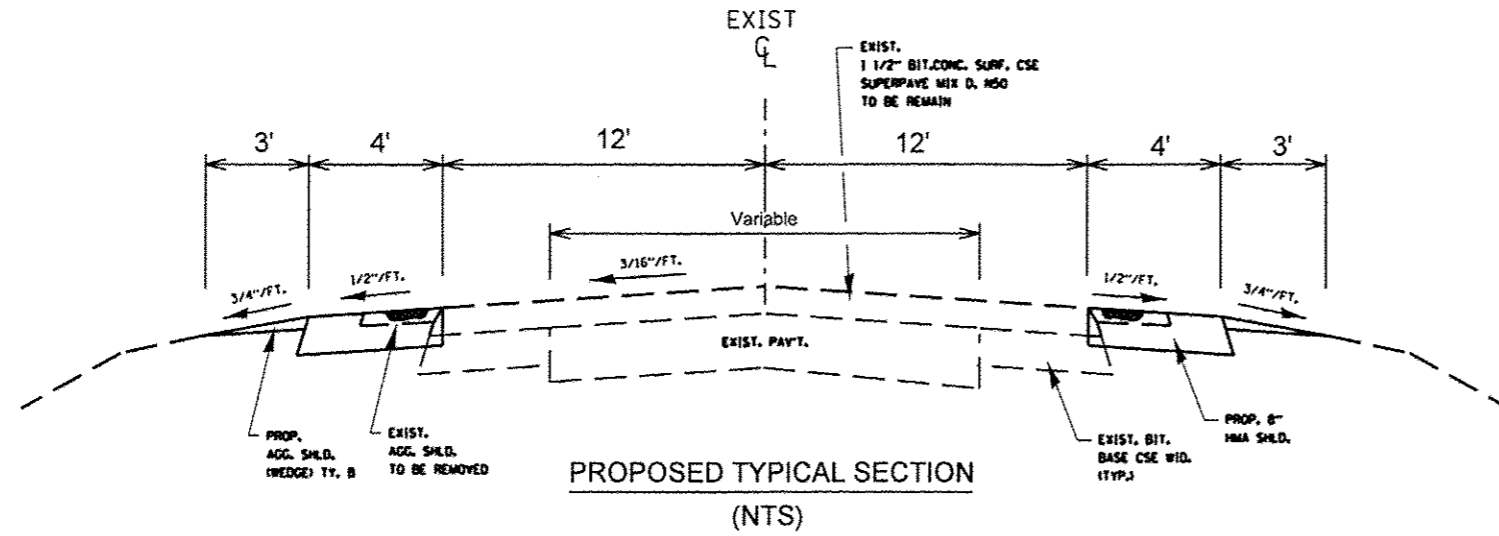


**EXISTING TYPICAL SECTION  
(NTS)**  
 From Sta. 30+81 to Sta. 104+45  
 Lt. Shoulder begins at Sta. 30+82  
 From Sta. 105+85 to Sta. 134+43  
 From Sta. 135+82 to Sta. 193+79  
 Lt. Shoulder ends at Sta. 192+17



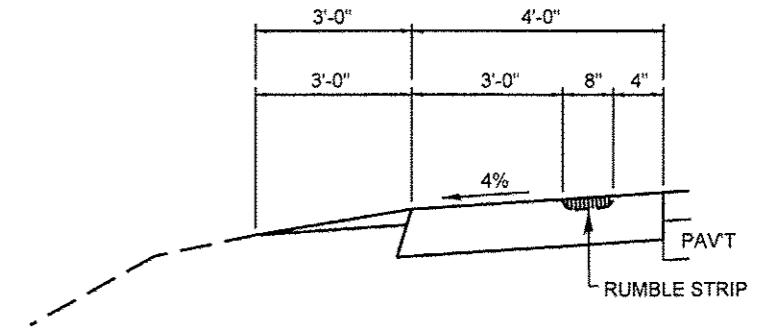
**EXISTING TYPICAL SECTION  
(NTS)**  
 From Sta. 104+45 to Sta. 105+85  
 Rt. Guardrail from Sta. 104+45 to 105+49  
 Lt. Guardrail from Sta. 104+80 to 105+85  
 From Sta. 134+43 to Sta. 135+82  
 Rt. Guardrail from Sta. 134+43 to 135+48  
 Lt. Guardrail from Sta. 134+78 to 135+82

FILE NAME =	USER NAME = mockbs	DESIGNED -	REVISED -	<b>STATE OF ILLINOIS DEPARTMENT OF TRANSPORTATION</b>	<b>TYPICAL SECTION</b>				F.A.P. RTE.	SECTION	COUNTY	TOTAL SHEETS	SHEET NO.		
S:\GEN\DRAW\T\STD&PLNS\504013\68863\68863.dgn	PLOT SCALE = 80.0033' / in.	DRAWN -	REVISED -		SCALE:	SHEET	OF	SHEETS	STA.	TO STA.	698	1261	WOODFORD	15	3
Default	PLOT DATE = 1/30/2014	CHECKED -	REVISED -												
		DATE -	REVISED -												

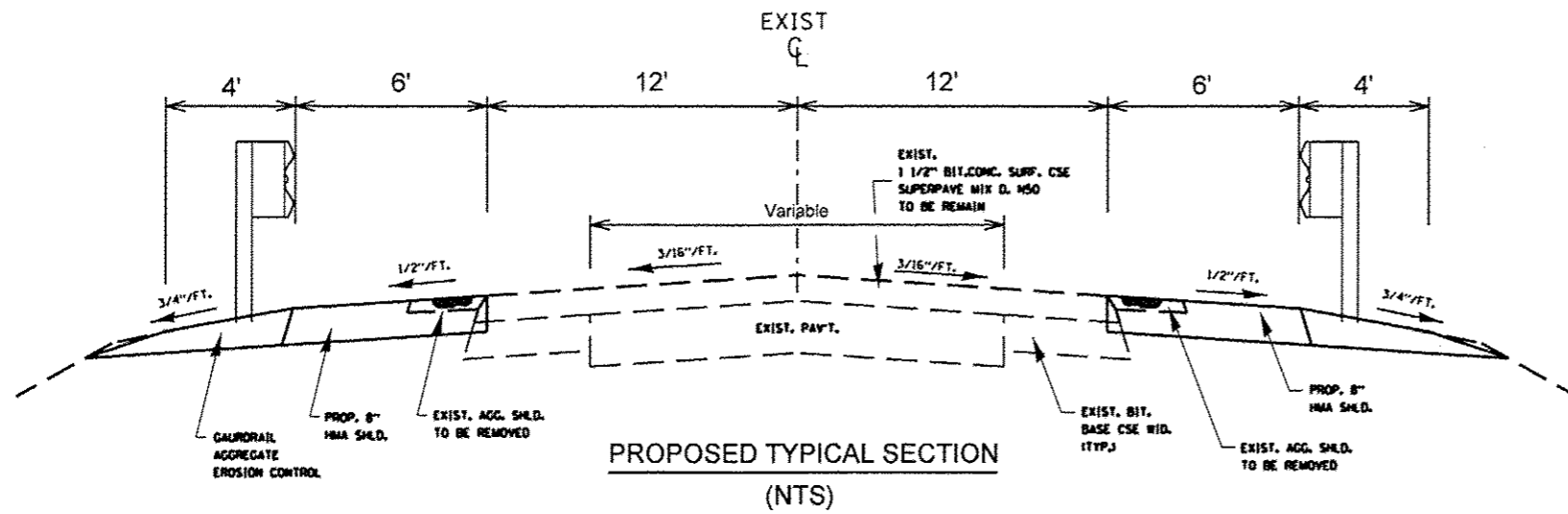


**PROPOSED TYPICAL SECTION  
(NTS)**

From Sta. 30+81 to Sta. 103+22  
 Lt. Shoulder begins at Sta. 30+82  
 From Sta. 106+59 to Sta. 133+45  
 From Sta. 136+88 to Sta. 170+07  
 From Sta. 175+81 to Sta. 193+79  
 Lt. Shoulder ends at Sta. 192+17

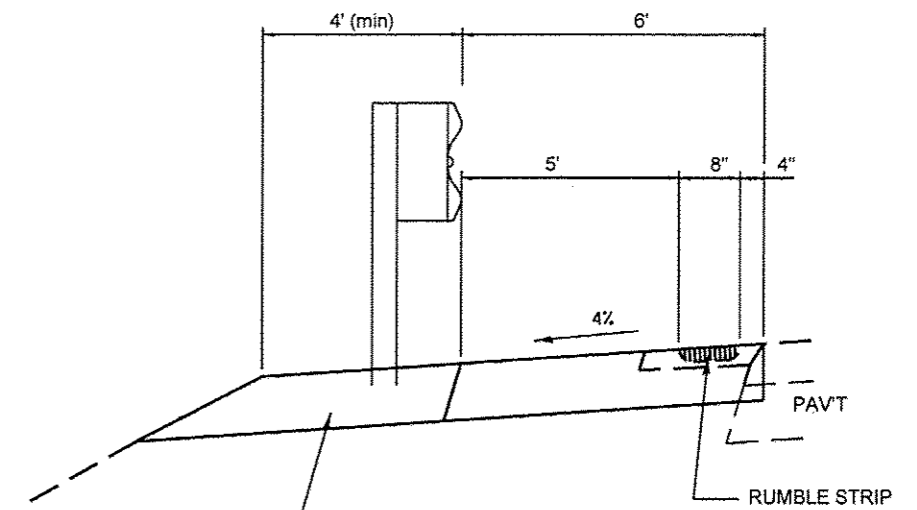


**SHOULDER DETAIL  
(NTS)**



**PROPOSED TYPICAL SECTION  
(NTS)**

From Sta. 103+22 to Sta. 106+59  
 Lt & Rt. Guardrail from Sta. 103+56.02 to 106+24.77  
 From Sta. 133+45 to Sta. 136+88  
 Lt. & Rt. Guardrail from Sta. 133+79.48 to 136+48.23  
 From Sta. 170+07 to Sta. 175+81  
 Rt. Guardrail from Sta. 170+40.63 to 174+59.38  
 Lt. Guardrail from Sta. 171+31.63 to 175+46.88



**SHOULDER DETAIL  
(NTS)**

FILE NAME =	USER NAME = meckba	DESIGNED -	REVISED -	<b>STATE OF ILLINOIS DEPARTMENT OF TRANSPORTATION</b>	<b>TYPICAL SECTIONS</b>			F.A.P. RTE.	SECTION	COUNTY	TOTAL SHEETS	SHEET NO.
S:\GEN\DRFT\STG\PLNS\504013\68863\68863.dgn	PLOT SCALE = 80.8033' / in.	DRAWN -	REVISED -					698	126I	WOODFORD	15	4
Default	PLOT DATE = 1/30/2014	CHECKED -	REVISED -		SCALE: SHEET OF SHEETS STA. TO STA.			<b>CONTRACT NO. 68863</b>				
		DATE -	REVISED -		ILLINOIS FED. AID PROJECT							

CODE NO.	ITEM	UNIT	TOTAL QUANTITY	CONST. CODE
				WOODFORD CO.
				0021
				90% FEDERAL 10% STATE
20200600	EXCAVATING AND GRADING EXISTING SHOULDER	UNIT	316	316
21400100	GRADING AND SHAPING DITCHES	FOOT	32,066	32,066
25000200	SEEDING, CLASS 2	ACRE	4	4
25000400	NITROGEN FERTILIZER NUTRIENTS	POUND	398	398
25000500	PHOSPHORUS FERTILIZER NUTRIENTS	POUND	398	398
25000600	POTASSIUM FERTILIZER NUTRIENTS	POUND	398	398
25100115	MULCH, METHOD 2	ACRE	4	4
28000250	TEMPORARY EROSION CONTROL SEEDING	POUND	442	442
28000500	INLET AND PIPE PROTECTION	EACH	35	35
40600215	POLYMERIZED BITUMINOUS MATERIALS (PRIME COAT)	TON	31	31
48102100	AGGREGATE WEDGE SHOULDER, TYPE B	TON	2,238	2,238
48203029	HOT-MIX ASPHALT SHOULDERS, 8"	SQ YD	14,761	14,761
* 63000001	STEEL PLATE BEAM GUARDRAIL, TYPE A, 6 FOOT POSTS	FOOT	263	263
* 63000360	LONG-SPAN GUARDRAIL OVER CULVERT, 18 FT 9 IN SPAN	FOOT	1,012	1,012
* 63100167	TRAFFIC BARRIER TERMINAL, TYPE 1 (SPECIAL) TANGENT	EACH	12	12
63200310	GUARDRAIL REMOVAL	FOOT	418	418
64200108	SHOULDER RUMBLE STRIPS, 8 INCH	FOOT	32,066	32,066
67100100	MOBILIZATION	L. SUM	1	1
70100460	TRAFFIC CONTROL AND PROTECTION, STANDARD 701306	L. SUM	1	1
70100500	TRAFFIC CONTROL AND PROTECTION, STANDARD 701326	L. SUM	1	1
70103815	TRAFFIC CONTROL SURVEILLANCE	CAL. DA	15	15
* 78009004	MODIFIED URETHANE PAVEMENT MARKING - LINE 4"	FOOT	32,066	32,066
* 78200410	GUARDRAIL MARKERS, TYPE A	EACH	21	21
* 78201000	TERMINAL MARKERS - DIRECT APPLIED	EACH	12	12
Z0001002	GUARDRAIL AGGREGATE EROSION CONTROL	TON	460	460

\* SPECIALTY ITEM

FILE NAME =	USER NAME = meckbe	DESIGNED -	REVISED -	<b>STATE OF ILLINOIS DEPARTMENT OF TRANSPORTATION</b>	<b>SUMMARY OF QUANTITIES</b>	F.A.P. RTE.	SECTION	COUNTY	TOTAL SHEETS	SHEET NO.	
S:\GEN\CRAFT\STO&PLNS\QUAD\1\68863\68863.dgn		DRAWN -	REVISED -			698	1261	WOODFORD	15	5	
PLOT SCALE = 88.8233' / in.		CHECKED -	REVISED -			<b>CONTRACT NO. 68863</b>					
PLOT DATE = 1/30/2014		DATE -	REVISED -			<small>ILLINOIS FED. AID PROJECT</small>					

CODE PAY ITEMS			48203029	40600215	48102100	64200108	78009004	Z0001002
LOCATION	LENGTH (FEET)	SHOULDER WIDTH (FEET)	HOT-MIX ASPHALT SHOULDERS, 8" (SOYD)	POLY. BIT. MAT. (PRIME COAT) (TON)	AGG. WEDGE SHOULDERS TY B (TON)	SHOULDER RUMBLE STRIP 8" (FOOT)	MODIFIED URETHANE PVMNT MKING- LINE 4" (FOOT)	GUARDRAIL AGG. EROSION CONTROL (TON)
RIGHT SIDE								
STA. 30+81.00 TO STA. 103+22.02	7,241.02	4	3,218.23	6.82	544.28	7,241.02	7,241.02	
STA. 103+22.02 TO STA. 106+58.77	336.75	6	224.50	0.48		336.75	336.75	67.50
STA. 106+58.77 TO STA. 117+09.00	1,050.23	4	466.77	0.99	78.94	1,050.23	1,050.23	
STA. 117+82.00 TO STA. 133+45.48	1,563.48	4	694.88	1.47	117.52	1,563.48	1,563.48	
STA. 133+45.48 TO STA. 136+87.66	342.18	6	228.12	0.48		342.18	342.18	68.59
STA. 136+87.66 TO STA. 170+06.63	3,318.97	4	1,475.11	3.13	249.48	3,319.00	3,319.00	
STA. 170+06.63 TO STA. 174+93.38	486.75	6	324.50	0.69		486.75	486.75	97.57
STA. 174+93.38 TO STA. 193+79.00	1,885.62	4	838.05	1.78	141.74	1,885.62	1,885.62	
SUB-TOTAL	16,225		7,470.16	15.84	1,131.96	16,225.03	16,225.03	233.65
LEFT SIDE								
STA. 30+82.00 TO STA. 61+19.00	3,037.00	4	1,349.78	2.86	228.28	3,037.00	3,037.00	
STA. 61+93.00 TO STA. 103+22.02	4,129.02	4	1,835.12	3.89	310.36	4,129.02	4,129.02	
STA. 103+22.02 TO STA. 106+58.77	336.75	6	224.50	0.48		336.75	336.75	67.50
STA. 106+58.77 TO STA. 110+30.00	371.23	4	164.99	0.35	27.90	371.23	371.23	
STA. 111+87.00 TO STA. 117+05.00	518.00	4	230.22	0.49	38.94	518.00	518.00	
STA. 117+67.00 TO STA. 133+45.48	1,578.48	4	701.55	1.49	118.65	1,578.48	1,578.48	
STA. 133+45.48 TO STA. 136+87.66	342.18	6	228.12	0.48		342.18	342.18	68.59
STA. 136+87.66 TO STA. 171+31.63	3,443.15	4	1,530.29	3.24	258.81	3,443.15	3,443.15	
STA. 171+31.63 TO STA. 175+80.88	449.25	6	299.50	0.63		449.25	449.25	90.05
STA. 175+80.88 TO STA. 192+17.00	1,636.12	4	727.16	1.54	122.98	1,636.12	1,636.12	
SUB-TOTAL	15,841.18		7,291.23	15.46	1,105.93	15,841.18	15,841.18	226.14
TOTAL	32,066		14,761.39	31.30	2,237.89	32,066.21	32,066.21	459.79

CODE PAY ITEMS	67100100
LOCATION	MOBILIZATION (L SUM)
STA. 30+81.00 TO STA. 193+17.00	1
TOTAL	1

CODE PAY ITEMS	28000500
LOCATION	INLET AND PIPE PROTECTION (EACH)
STA. 30+81.00 TO STA. 193+17.00	35
TOTAL	35

ITEMS	APPLICATION RATES
POLY.BIT. MAT. (PRIME COAT)	ON GRANULAR BASE - 0.5 GAL/SOYD ON NEW BINDER - 0.03 GAL/SOYD
AGGREGATE (PRIME COAT)	ON NEW BINDER - 2 LB/SOYD
COARSE AGGREGATE	2.05 TON/CUYD

CODE PAY ITEMS		20200600	21400100	25000200	25000400	25000500	25000600	25100115	28000250
LOCATION	LENGTH (FEET)	EXC. & GRADING EXIST. SHOULDER (UNIT)	GRADING & SHAPING DITCHES (FOOT)	SEEDING CLASS 2 (ACRE)	NITROGEN FERT. NUTRIENT (POUND)	PHOSPHORUS FERT. NUTRIENT (POUND)	POTASSIUM FERT. NUTRIENT (POUND)	MULCH METHOD 2 (ACRE)	TEMP. EROSION CONTROL SEEDING (POUND)
RIGHT SIDE									
STA. 30+81.00 TO STA. 103+22.02	7,241.02	72.41	7,241.02	1.00	89.76	89.76	89.76	1.00	99.74
STA. 103+22.02 TO STA. 106+58.77	336.75	3.37	336.75	0.05	4.17	4.17	4.17	0.05	4.64
STA. 106+58.77 TO STA. 117+09.00	1,050.23	10.50	1,050.23	0.14	13.02	13.02	13.02	0.14	14.47
STA. 117+82.00 TO STA. 133+45.48	1,563.48	15.63	1,563.48	0.22	19.38	19.38	19.38	0.22	21.54
STA. 133+45.48 TO STA. 136+87.66	342.18	3.42	342.18	0.05	4.24	4.24	4.24	0.05	4.71
STA. 136+87.66 TO STA. 170+06.63	3,318.97	33.19	3,318.97	0.46	41.14	41.14	41.14	0.46	45.72
STA. 170+06.63 TO STA. 174+93.38	486.75	4.87	486.75	0.07	6.03	6.03	6.03	0.07	6.70
STA. 174+93.38 TO STA. 193+79.00	1,885.62	18.86	1,885.62	0.26	23.38	23.38	23.38	0.26	25.97
SUB-TOTAL	16,225	162.25	16,225	2.23	201.14	201.14	201.14	2.23	223.48
LEFT SIDE									
STA. 30+82.00 TO STA. 61+19.00	3,037.00	30.37	3,037.00	0.42	37.65	37.65	37.65	0.42	41.83
STA. 61+93.00 TO STA. 103+22.02	4,129.02	41.29	4,129.02	0.57	51.19	51.19	51.19	0.57	56.87
STA. 103+22.02 TO STA. 106+58.77	336.75	3.37	336.75	0.05	4.17	4.17	4.17	0.05	4.64
STA. 106+58.77 TO STA. 110+30.00	371.23	3.71	371.23	0.05	4.60	4.60	4.60	0.05	5.11
STA. 111+87.00 TO STA. 117+05.00	518.00	5.18	518.00	0.07	6.42	6.42	6.42	0.07	7.13
STA. 117+67.00 TO STA. 133+45.48	1,578.48	15.78	1,578.48	0.22	19.57	19.57	19.57	0.22	21.74
STA. 133+45.48 TO STA. 136+87.66	342.18	3.42	342.18	0.05	4.24	4.24	4.24	0.05	4.71
STA. 136+87.66 TO STA. 171+31.63	3,443.15	34.43	3,443.15	0.47	42.68	42.68	42.68	0.47	47.43
STA. 171+31.63 TO STA. 175+80.88	449.25	4.49	449.25	0.06	5.57	5.57	5.57	0.06	6.19
STA. 175+80.88 TO STA. 192+17.00	1,636.12	16.36	1,636.12	0.23	20.28	20.28	20.28	0.23	22.54
SUB-TOTAL	15,841.18	158.41	15,841.18	2.18	196.38	196.38	196.38	2.18	218.20
TOTAL	32,066	320.66	32,066	4.41	397.52	397.52	397.52	4.41	441.68
APP. RATE OR CONV. FACTOR		100 FT = 1 UNIT		1 ACRE=43,560 SQFT	90 LBS/ACRE	90 LBS/ACRE	90 LBS/ACRE		100 LBS/ACRE

CODE PAY ITEMS	70100460
LOCATION	TRAFFIC CONTROL AND PROTECTION, STD. 701306 (L SUM)
STA. 30+81.00 TO STA. 193+17.00	1
TOTAL	1

CODE PAY ITEMS	70100500
LOCATION	TRAFFIC CONTROL AND PROTECTION, STD. 701326 (L SUM)
STA. 30+81.00 TO STA. 193+17.00	1
TOTAL	1

CODE PAY ITEMS	70103815
LOCATION	TRAFFIC CONTROL SURVEILLANCE (CAL DA)
STA. 30+81.00 TO STA. 193+17.00	15
TOTAL	15

CODE PAY ITEMS	63000001
LOCATION	STEEL PLATE BEAM GUARDRAIL, TYPE A, 6 FOOT POSTS (FOOT)
RT. STA. 170+90.63 TO STA. 172+15.63	125
RT. STA. 173+84.38 TO STA. 174+09.38	25
LT. STA. 173+84.38 TO STA. 174+96.88	112.5
<b>TOTAL</b>	<b>262.5</b>

CODE PAY ITEMS	63000360
LOCATION	LONG-SPAN GUARDRAIL OVER CULVERT, 18FT 9 IN SPAN (FOOT)
RT. STA. 104+06.02 TO STA. 105+74.77	168.75
LT. STA. 104+06.02 TO STA. 105+74.77	168.75
RT. STA. 134+29.48 TO STA. 135+98.23	168.75
LT. STA. 134+29.48 TO STA. 135+98.23	168.75
RT. STA. 172+15.63 TO STA. 173+84.38	168.75
LT. STA. 172+15.63 TO STA. 173+84.38	168.75
<b>TOTAL</b>	<b>1,012.50</b>

CODE PAY ITEMS	63200310
LOCATION	GUARDRAIL REMOVAL (FOOT)
RT. STA. 104+45 TO STA. 105+49	104
LT. STA. 104+80 TO STA. 105+85	105
RT. STA. 134+43 TO STA. 135+48	105
LT. STA. 134+78 TO STA. 135+82	104
<b>TOTAL</b>	<b>418</b>

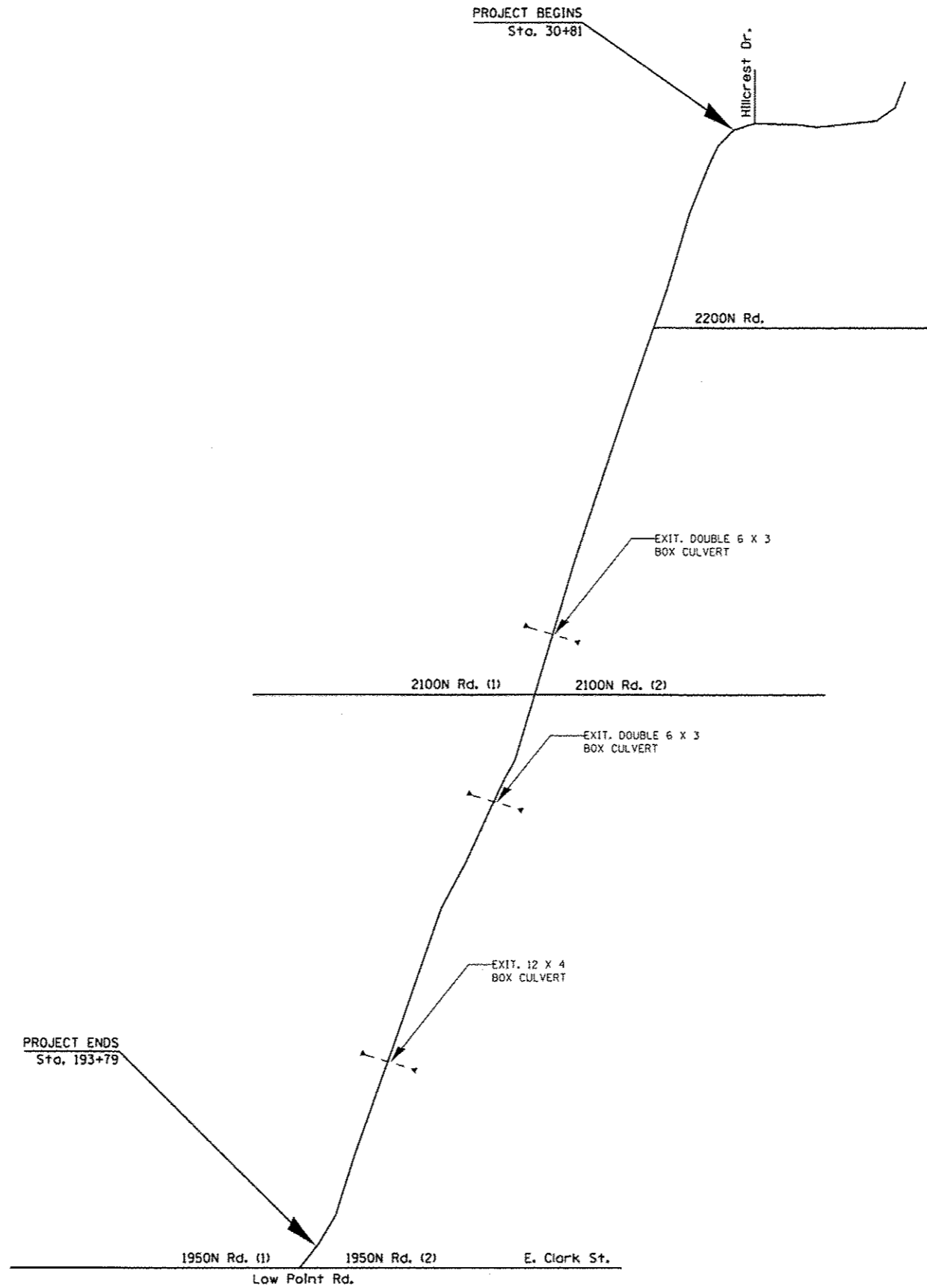
CODE PAY ITEMS	63100167
LOCATION	TRAFFIC BARRIER TERMINAL, TYPE 1 (SPECIAL) TANGENT (EACH)
RT. STA. 103+56.02 TO STA. 104+06.02	1
LT. STA. 103+56.02 TO STA. 104+06.02	1
RT. STA. 105+74.77 TO STA. 106+24.77	1
LT. STA. 105+74.77 TO STA. 106+24.77	1
RT. STA. 133+79.48 TO STA. 134+29.48	1
LT. STA. 133+79.48 TO STA. 134+29.48	1
RT. STA. 135+98.23 TO STA. 136+48.23	1
LT. STA. 135+98.23 TO STA. 136+48.23	1
RT. STA. 170+40.63 TO STA. 170+90.63	1
LT. STA. 171+65.63 TO STA. 172+15.63	1
RT. STA. 174+09.38 TO STA. 174+59.38	1
LT. STA. 174+96.88 TO STA. 175+46.88	1
<b>TOTAL</b>	<b>12</b>

CODE PAY ITEMS	78201000
LOCATION	TERMINAL MARKER DIRECT APPLIED (EACH)
RT. STA. 103+56.02	1
LT. STA. 103+56.02	1
RT. STA. 106+24.77	1
LT. STA. 106+24.77	1
RT. STA. 133+79.48	1
LT. STA. 133+79.48	1
RT. STA. 136+48.23	1
LT. STA. 136+48.23	1
RT. STA. 170+40.63	1
LT. STA. 171+65.63	1
RT. STA. 174+59.38	1
LT. STA. 175+46.88	1
<b>TOTAL</b>	<b>12</b>

CODE PAY ITEMS	78200410
LOCATION	GUARDRAIL MARKERS, TYPE A (EACH)
RT. STA. 104+06.02 TO STA. 105+74.77	3
LT. STA. 104+06.02 TO STA. 105+74.77	3
RT. STA. 134+29.48 TO STA. 135+98.23	3
LT. STA. 134+29.48 TO STA. 135+98.23	3
RT. STA. 170+90.63 TO STA. 174+09.38	5
LT. STA. 172+15.63 TO STA. 174+96.88	4
<b>TOTAL</b>	<b>21</b>

NOTE: SPACING = 80 FT



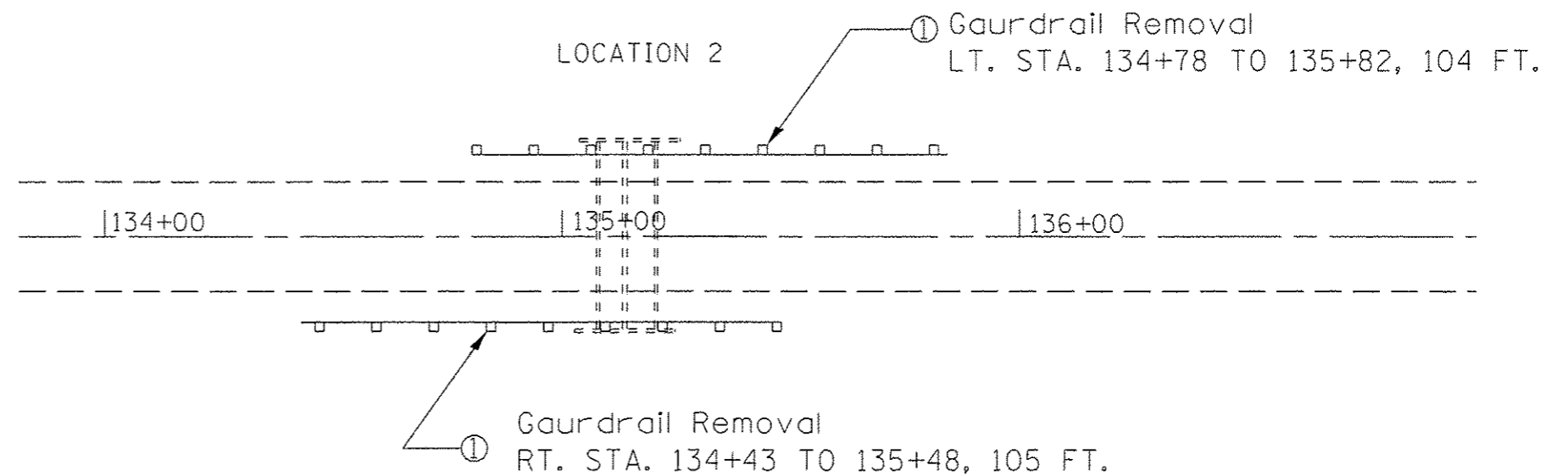
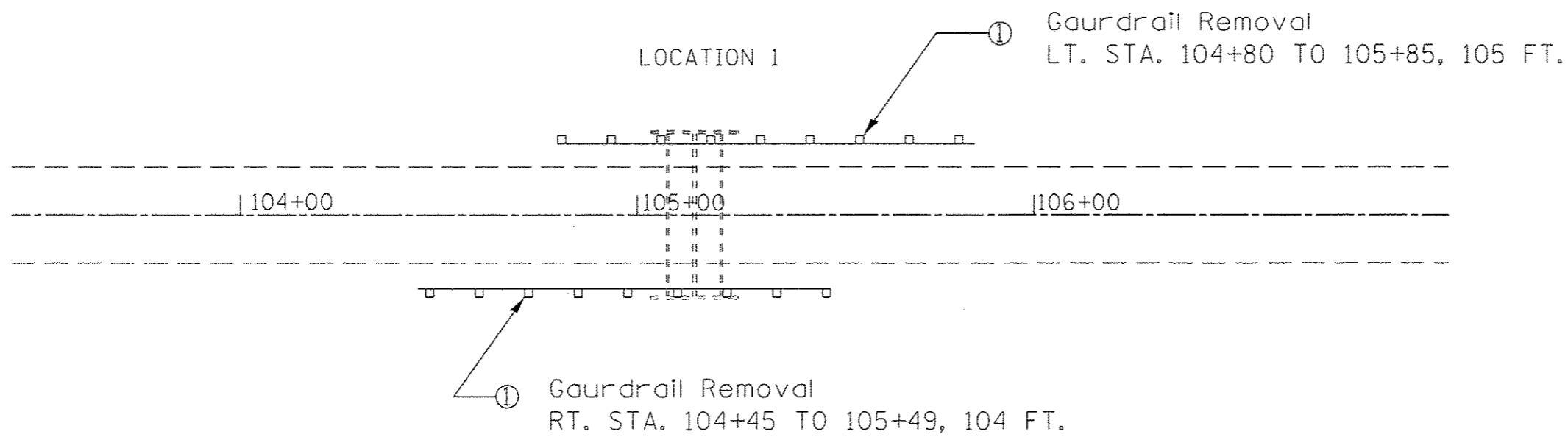


FILE NAME =	USER NAME = mackbs	DESIGNED -	REVISED -
S:\GEN\DRIFT\STD\PLNS\504013\68863\68863.dgn		DRAWN -	REVISED -
	PLOT SCALE = 80.0033' / 1"	CHECKED -	REVISED -
Default	PLOT DATE = 1/30/2014	DATE -	REVISED -

**STATE OF ILLINOIS  
DEPARTMENT OF TRANSPORTATION**

LINE DIAGRAM			
SCALE:	SHEET	OF	SHEETS
		STA.	TO STA.

F.A.P. RTE.	SECTION	COUNTY	TOTAL SHEETS	SHEET NO.
698	1261	WOODFORD	15	9
<b>CONTRACT NO. 68863</b>				
ILLINOIS FED. AID PROJECT				

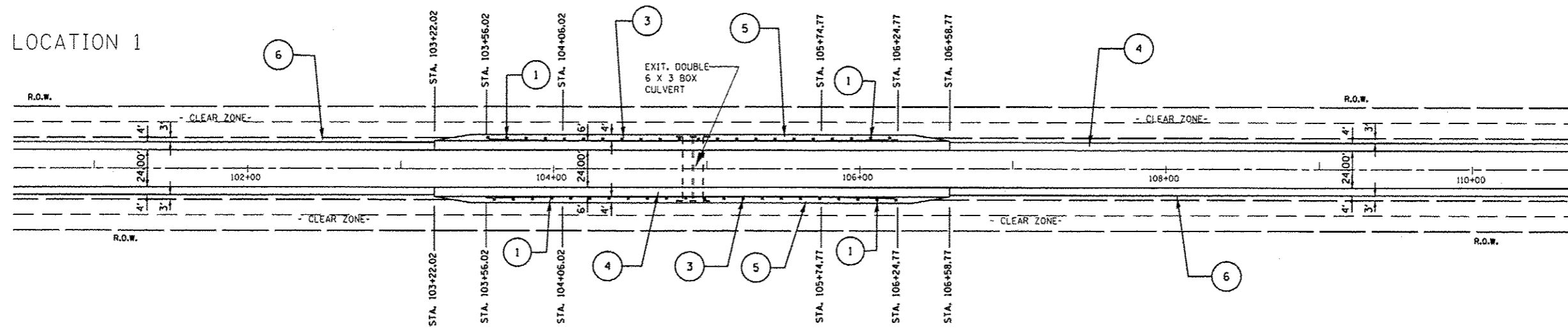


LEGEND

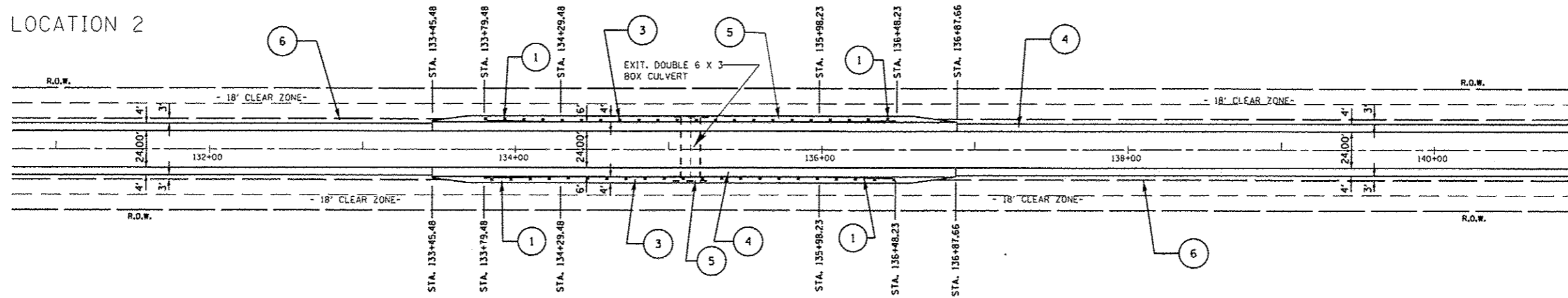
① GAURDRAIL REMOVAL

FILE NAME =	USER NAME = meckts	DESIGNED -	REVISED -	<b>STATE OF ILLINOIS DEPARTMENT OF TRANSPORTATION</b>	<b>EXISTING &amp; REMOVAL</b>	F.A.P. RTE.	SECTION	COUNTY	TOTAL SHEETS	SHEET NO.
S:\GEN\DRAWING\STD&PLNS\SQAD\13\68863\68863.dgn		DRAWN -	REVISED -			698	1261	WOODFORD	15	10
PLOT SCALE = 88.8833 ' / in.		CHECKED -	REVISED -			<b>CONTRACT NO. 68863</b>				
PLOT DATE = 1/30/2014		DATE -	REVISED -			ILLINOIS FED. AID PROJECT				
Default				SCALE:	SHEET	OF	SHEETS	STA.	TO STA.	

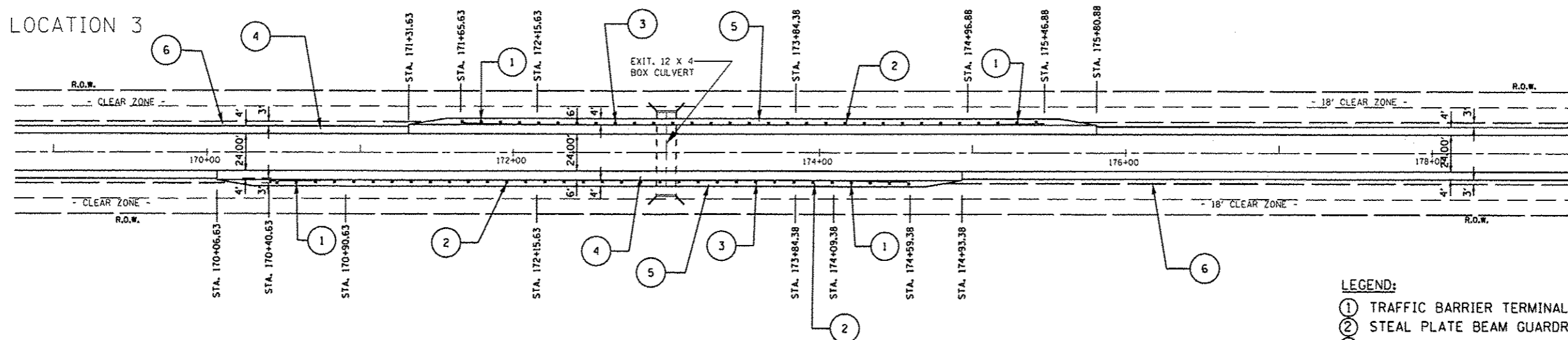
LOCATION 1



LOCATION 2



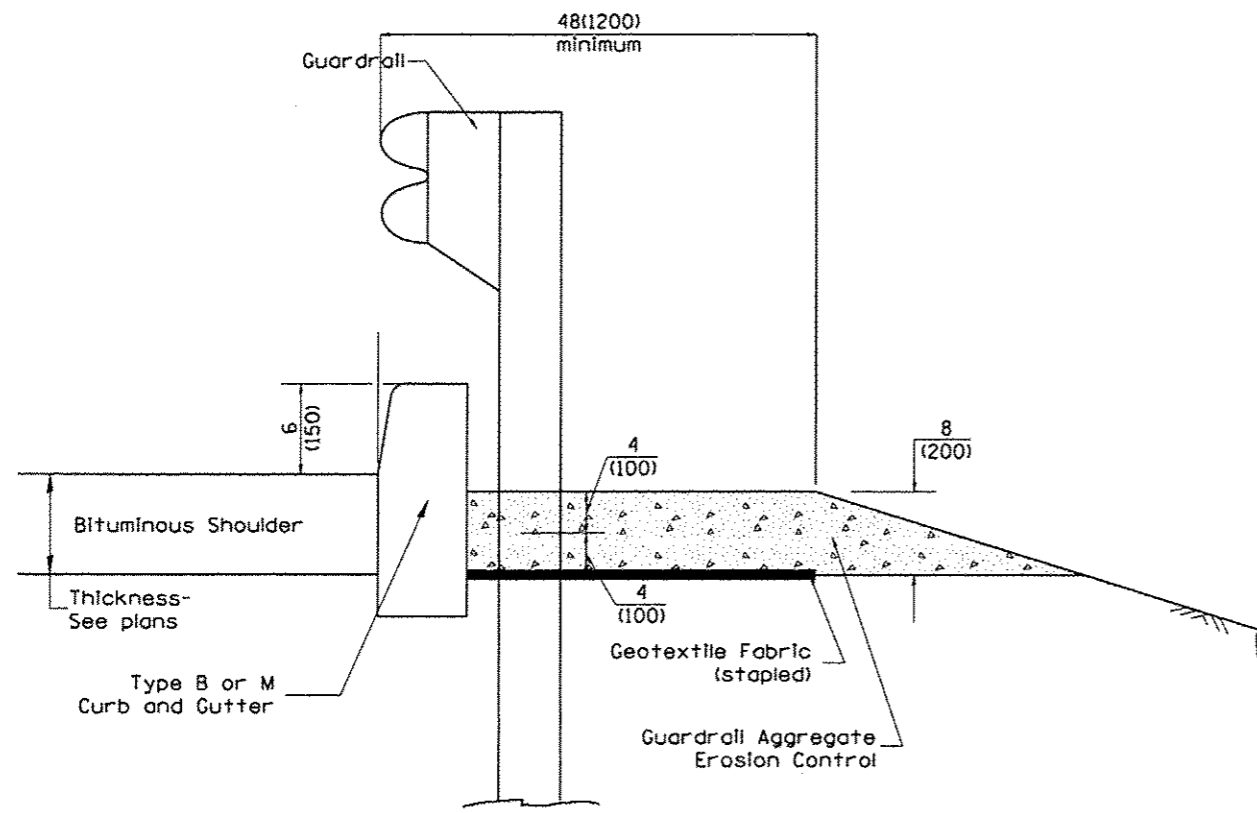
LOCATION 3



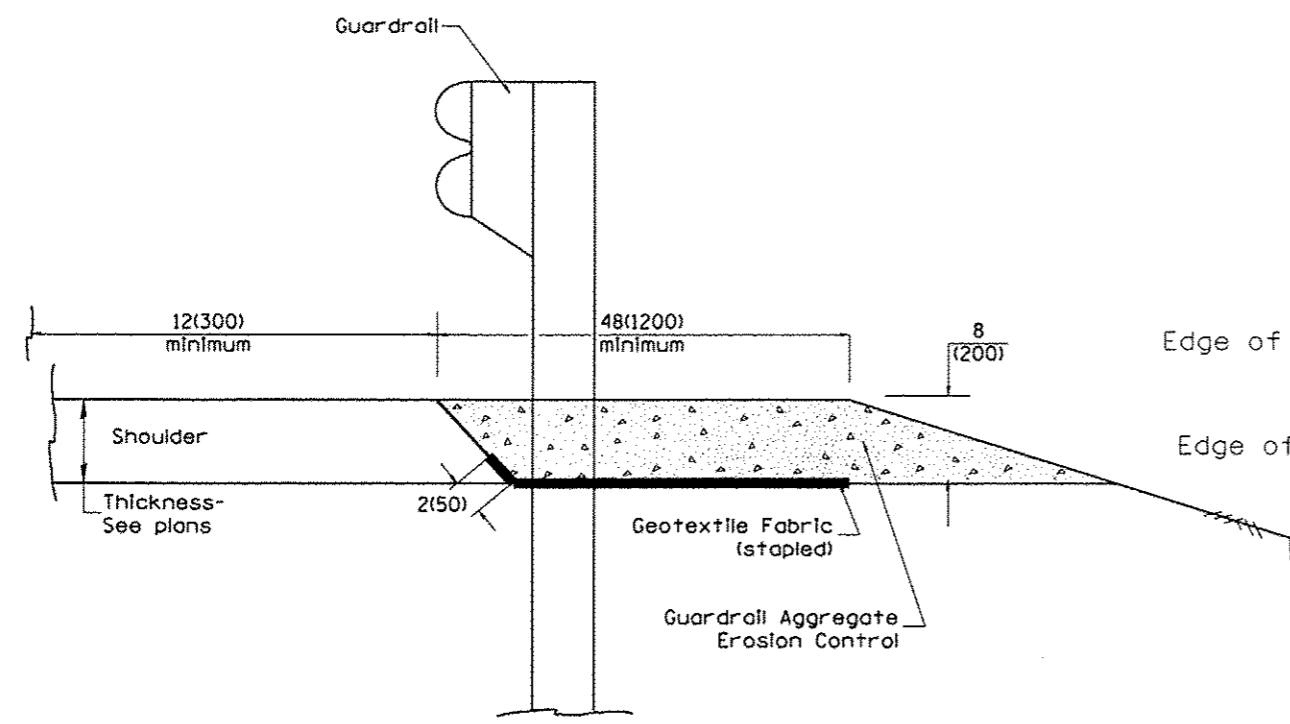
- LEGEND:**
- ① TRAFFIC BARRIER TERMINAL, TYPE 1 (SPECIAL) TANGENT
  - ② STEEL PLATE BEAM GUARDRAIL, TYPE A, 6 FOOT POTS
  - ③ LONG-SPAN GUARDRAIL OVER CULVERT, 18FT 9IN SPAN
  - ④ HOT-MIX ASPHALT SHOULDERS, 8"
  - ⑤ GUARDRAIL AGGREGATE EROSION CONTROL
  - ⑥ AGGREGATE WEDGE SHOULDER, TYPE B

FILE NAME =	USER NAME = mackba	DESIGNED -	REVISED -	<b>STATE OF ILLINOIS DEPARTMENT OF TRANSPORTATION</b>	<b>PLANVIEW</b>	F.A.P. RTE.	SECTION	COUNTY	TOTAL SHEETS	SHEET NO.	
SYGEM\DRIFT\STG\PLNS\504AD1\68863\68863.dgn		DRAWN -	REVISED -			698	1261	WOODFORD	15	11	
PLOT SCALE = 88.0033' / in.		CHECKED -	REVISED -			<b>CONTRACT NO. 68863</b>					
PLOT DATE = 1/30/2014		DATE -	REVISED -			ILLINOIS FED. AID PROJECT					

DESIGNER NOTES:  
 1. Consider using a "B" curb pay item at guardrail installations where grades are equal to or greater than 1% and at inlets. (Include District Special Provision)  
 2. Use GUARDRAIL AGGREGATE EROSION CONTROL at guardrail installations where grades are less than 1%. (Include District Special Provision)  
 3. Include State Standards 609001, 609006 or 610001 if applicable.  
 4. Include the following District Cadd Standards as needed: Slope Drains for Exposed Pipes; Slope Drains for Buried Pipes; Seepage Collars for Buried Pipes; Seepage Collars for Exposed Pipes; Concrete Thrust Blocks and Pipe Elbow.  
 5. Include District Special Provision "Aggregate Quality" for projects located in the Western Area of the District - approx. dividing line is IL 97.



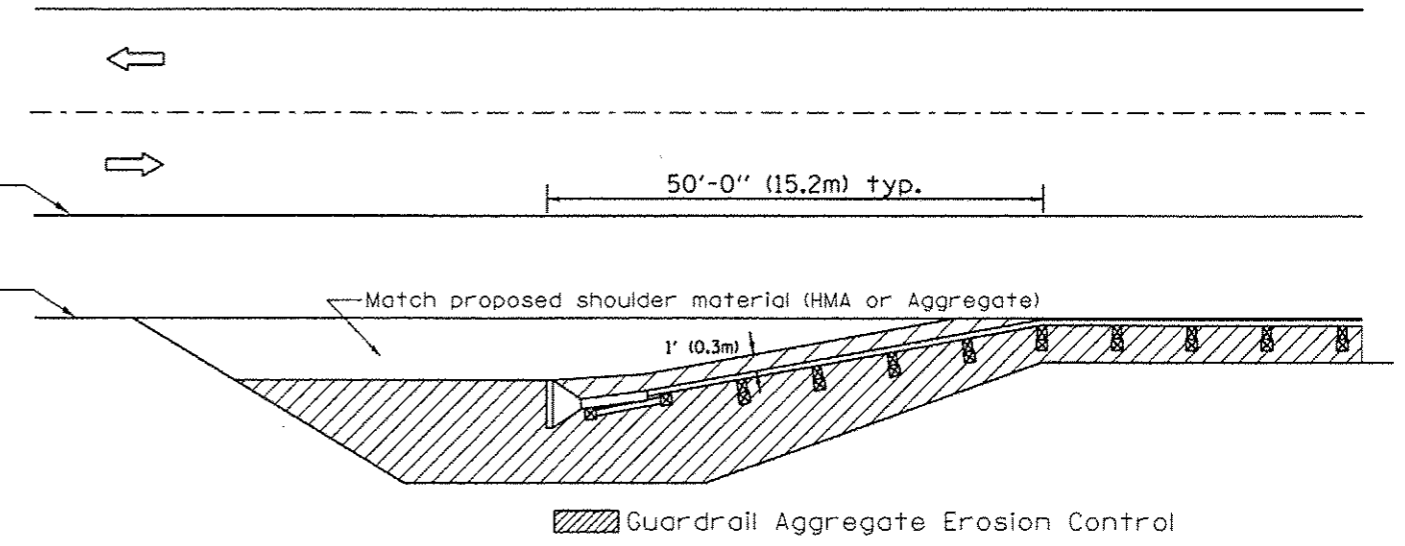
TYPICAL SECTION WITH EROSION CONTROL CURB



TYPICAL SECTION WITHOUT EROSION CONTROL CURB

**GENERAL NOTES: GUARDRAIL AGGREGATE EROSION CONTROL**

1. This work shall consist of grading as needed, furnishing and installing geotextile fabric and staples, and furnishing, placing and shaping crushed aggregate around and behind Steel Plate Beam Guardrail posts in accordance with Plan Details.
2. Before placing the aggregate and the Geotextile Fabric, weeds and grass shall be removed from the area to be covered.
3. After the area has been prepared, and in a dry condition, the Geotextile fabric shall be placed with a 12(300) minimum overlap. A knife cut for guardrail post installation is necessary.
4. The aggregate shall be deposited, compacted and shaped by either mechanical or hand methods, in a manner reasonably true to line and grade.
5. The Contractor shall have the option of placing the guardrail before or after the Geotextile Fabric and Aggregate are in place. If the guardrail is placed after the Geotextile Fabric and Aggregate, then any voids must be filled and the aggregate returned to line and grade.
6. Materials shall meet the following requirements:
  - A. The crushed aggregate shall be CA1 gradation in accordance with Article 1004.01(c) of the Standard Specifications.
  - B. The Geotextile Fabric shall be nonwoven fabric in accordance with Article 1080.02 of the Standard Specifications.



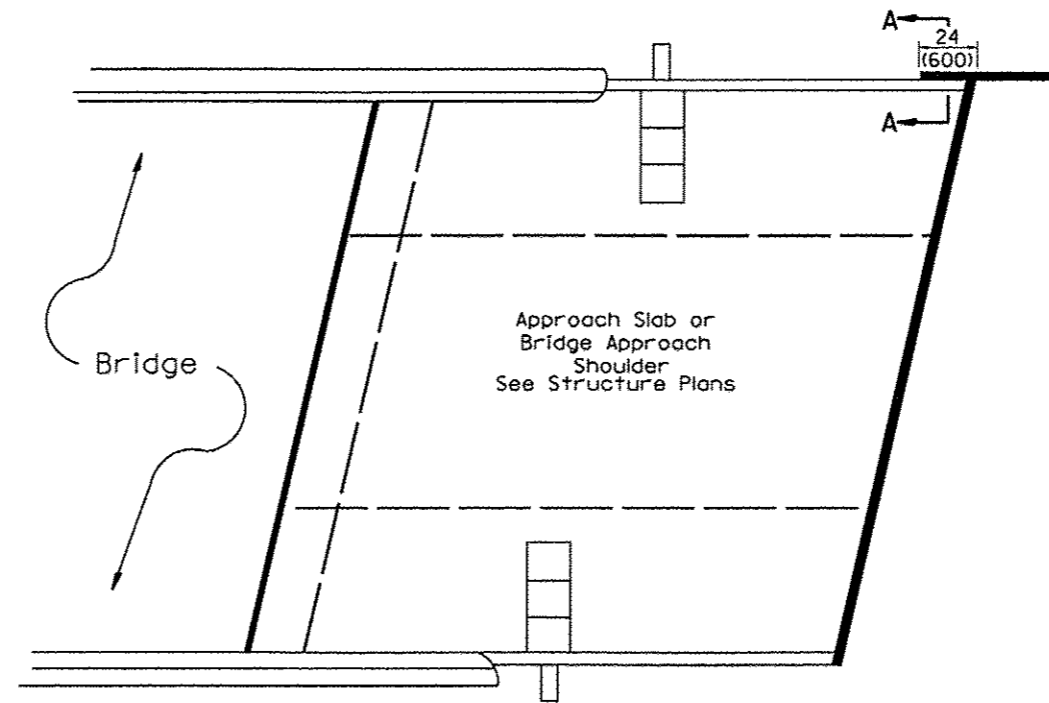
All dimensions are in inches (millimeters) unless otherwise noted.

01-01-97	RENUM. C-22.01, NEW REVISION BOX	T.P.	3-7-11	Added Detail showing plan view	R.D.
03-01-97	CORRECT STD. NUMBERS IN NOTES PG. 2	J.A.	8-10-12	Revised curb "B" and aggregate	R.D.
11-03-00	CORRECTION TO NOTES	M.A.			
10-16-06	REVISED TO 2007 SPEC.	M.A.			

STATE OF ILLINOIS  
 DEPARTMENT OF TRANSPORTATION

GUARDRAIL EROSION CONTROL TREATMENTS  
 NOT TO SCALE  
 SH. 1 OF 2  
 CADD STD. 630101-04

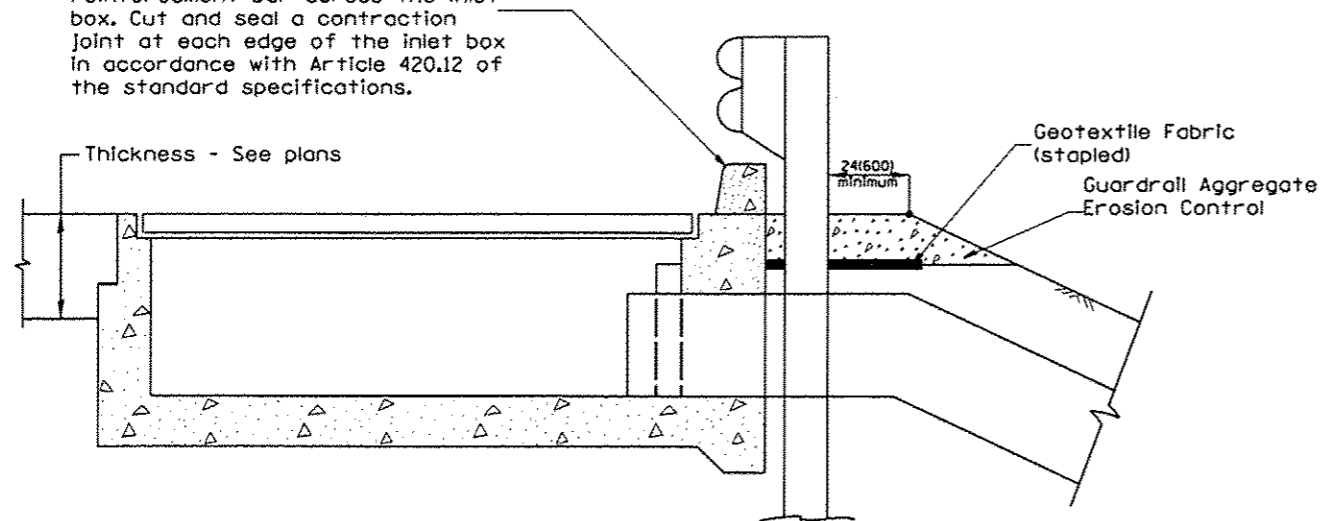
F.A.P. RTE.	SECTION	COUNTY	TOTAL SHEETS	SHEET NO.
698	1261	WOODFORD	15	12
CONTRACT NO. 68B63			ILLINOIS FED. AID PROJECT	



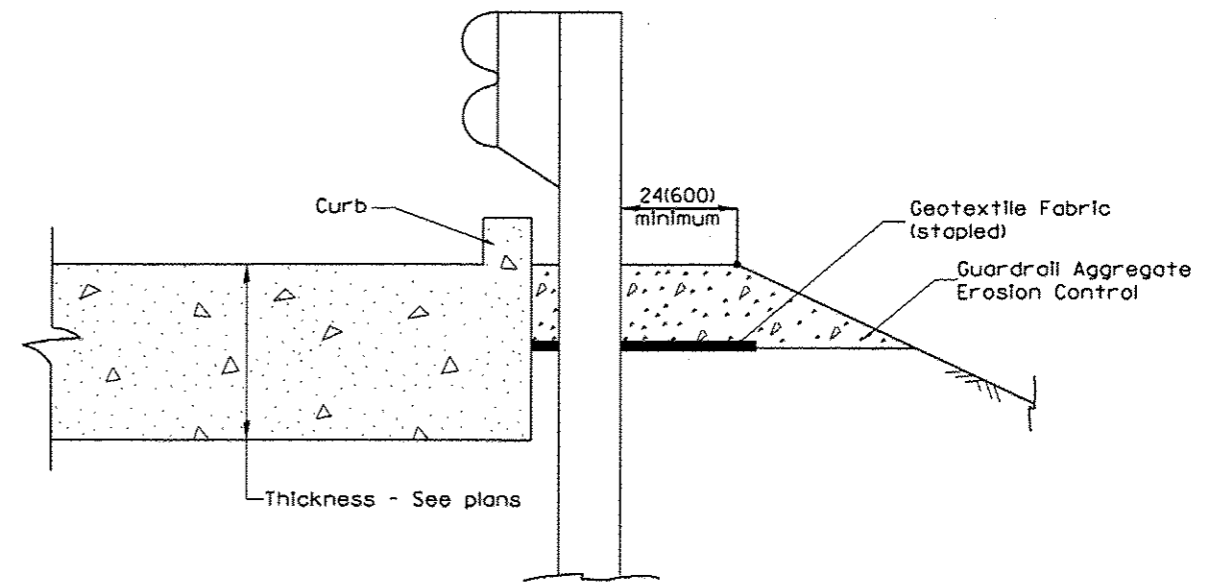
PLAN VIEW

APPROACH SLAB OR BRIDGE APPROACH SHOULDER  
(STANDARD 609001 or 609006)

Type B or M curb.  
Install an 8' long #4 epoxy coated reinforcement bar across the inlet box. Cut and seal a contraction joint at each edge of the inlet box in accordance with Article 420.12 of the standard specifications.



TYPICAL SECTION AT INLETS  
TYPE E & F (STANDARD 610001)

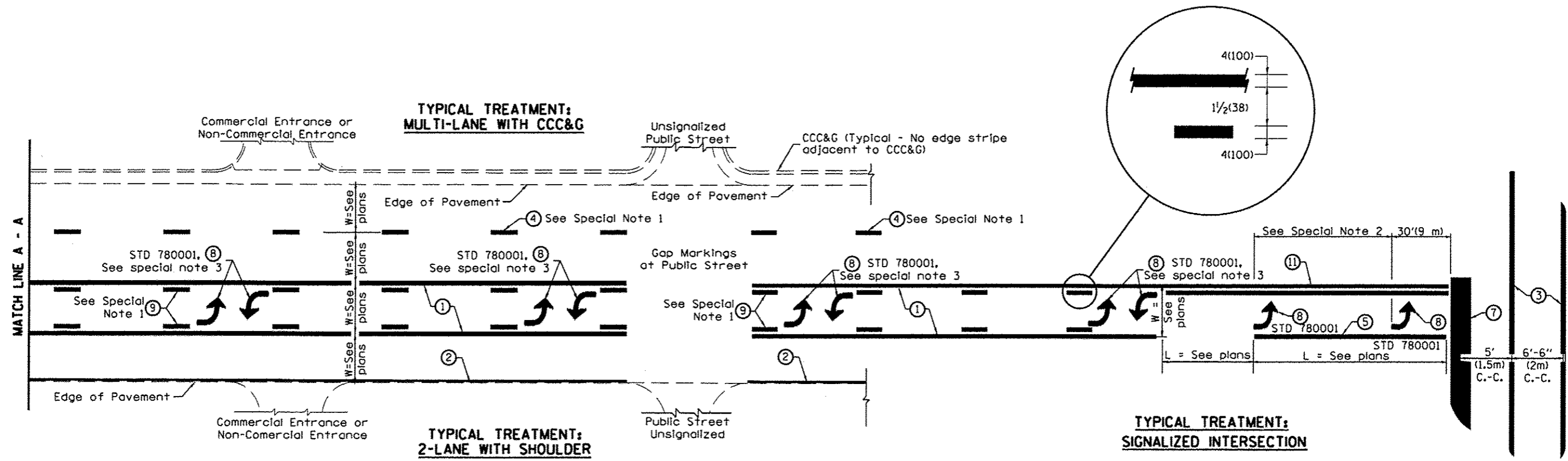


SECTION A-A  
TYPICAL SECTION WITH BRIDGE APPROACH CURB

All dimensions are in inches (millimeters) unless otherwise noted.

FILE NAME	USER NAME = meckbs	DESIGNED -	REVISED -	<b>STATE OF ILLINOIS DEPARTMENT OF TRANSPORTATION</b>	<b>GUARDRAIL EROSION CONTROL TREATMENTS</b>	F.A.P. RTE.	SECTION	COUNTY	TOTAL SHEETS	SHEET NO.	
SYNCHRODRAFT \STO&PLNS\504013\68863\68863.dgn	DRAWN -	REVISED -	698			1261	WOODFORD	15	13		
PLOT SCALE = 80.0000' / 1"	CHECKED -	REVISED -	CONTRACT NO. 68863								
DeFault	DATE -	REVISED -	SHI 2 OF 2								
PLOT DATE = 1/30/2014		DATE -		NO. 100 SCALE		SHEET OF SHEETS STA.		CADD: STD. 630101-04		FED. ROAD DIST. NO.	ILLINOIS FED. AID PROJECT

DESIGNER NOTES:  
1. Include State Standard 780001 (Typical Pavement Markings)



**FLUSH PAVED MEDIAN; TWO-WAY LEFT TURN LANE WITH ONE-WAY LEFT TURN LANE AT SIGNALIZED INTERSECTION**

**TYPICAL PAVEMENT MARKING LEGEND**  
(Note: This is a District Standard Legend. Some elements may not apply to specific project.)

- ① 4(100) Solid (Yellow)
- ② 4(100) Solid (White)
- ③ 2-6(150) Crosswalk @ 6'-6" (2m)min C.-C. (White)  
2-8(200) Crosswalk @ 6'-6" (2m)min C.-C. (White) (When traffic signals are present.)
- ④ 6(150) Skip-Dash (White) (See Special Note 1)
- ⑤ 8(200) Solid (White)
- ⑥ 12(300) Diagonal (White) (Item ⑥ is shown on Std. 780001)
- ⑦ 24(600) Stop Bar (White)
- ⑧ Letters & Arrows (See Std. 780001 and Special Notes 2 & 3)
- ⑨ 4(100) Skip-Dash (Yellow) (See Special Note 1)
- ⑩ 12(300) Diagonal (Yellow) (See Table A) ⑩
- ⑪ 4(100) Double Solid (Yellow) ⑪

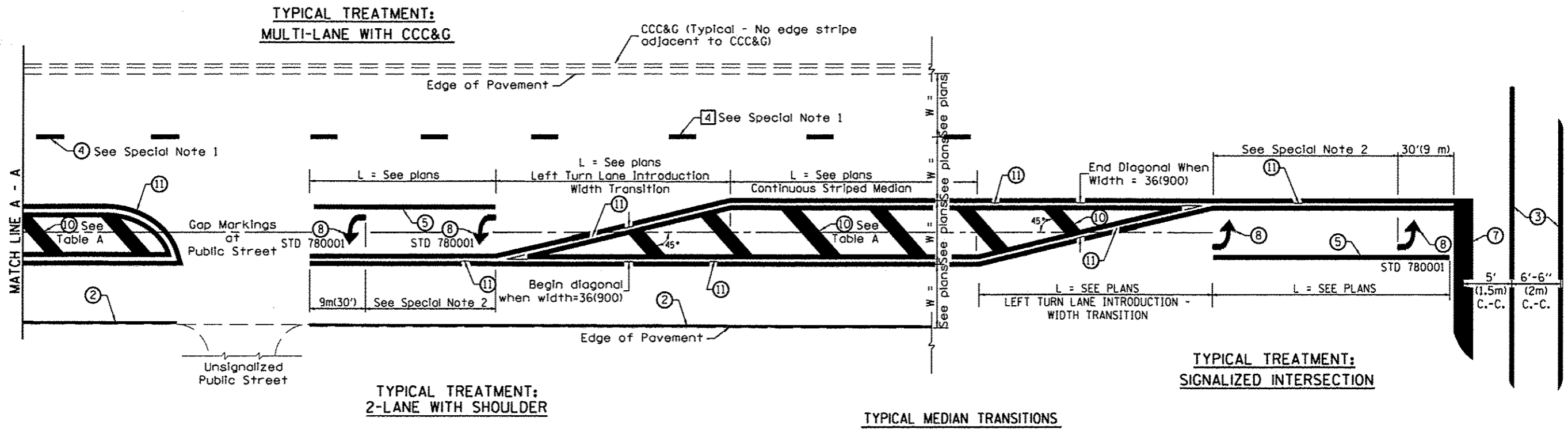
- SPECIAL NOTES**
- Skip-Dash markings will be centered between both ends of city blocks and shall be placed in alignment transversely across the pavement.
  - The following shall apply to arrows located in one-way left turn lanes:
    - A minimum of two (2) arrows is required.
    - The maximum spacing between arrows is 80' (24 m).
    - Arrows shall be evenly spaced if three (3) or more are required.
  - The following shall apply to arrow pairs located in two-way left turn lanes:
    - A minimum of two (2) arrow pairs is required.
    - The maximum spacing between arrow pairs is 200' (61 m).
    - Arrow pairs shall be evenly spaced if three (3) or more are required.
    - The spacing between Bi Directional Left Turn Arrows is 33' (10 m).

- GENERAL NOTES**
- Refer to State Standard 780001 for additional Pavement Markings including letters & arrows.
  - See Plans for Pavement Markings adjacent to curbed islands and medians, and through lane reductions.

01-01-97	RENUM. F-8.03, NEW REVISION BOX	T.P.	10-16-06	REVISED TO 2007 SPEC.	<b>STATE OF ILLINOIS DEPARTMENT OF TRANSPORTATION</b>	<b>TYPICAL PAVEMENT MARKINGS</b>	F.A.P. RTE.	SECTION	COUNTY	TOTAL SHEETS	SHEET NO.
02-07-97	ADD BI DIRECTIONAL DIMENSION	J.A.					698	1261	WOODFORD	15	14
10-97	CORRECT BI DIRECTIONAL DIMENSION	J.A.					SHT. 1 OF 2 CADD STD. 780001-D4				
08-02	ADD CROSSWALK DIMNS. WITH T.S.	M.A.					CONTRACT NO. 68863				

NOT TO SCALE

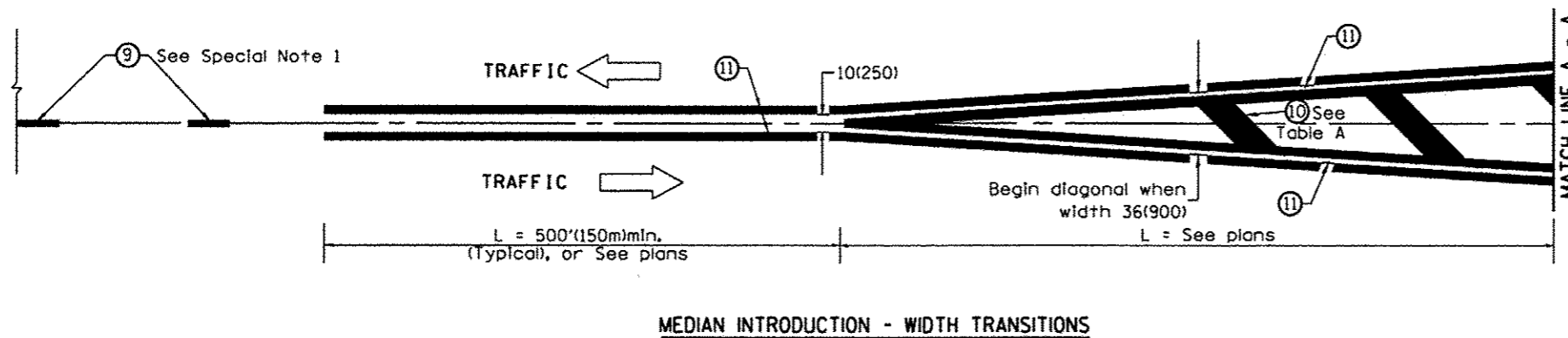
FED. ROAD DIST. NO. ILLINOIS FED. AID PROJECT



**FLUSH PAVED MEDIAN: RESTRICTED LEFT TURN LANE**

**TABLE A**  
RECOMMENDED SPACING BETWEEN DIAGONAL LINES

SPEED LIMIT RANGE	INTERSECTION CHANNELIZATION (Includes Width Transitions for Median and Left Turn Lane Introductions)	
	CONTINUOUS	
Less Than 30 mph (50 km/h)	50' (15m)	15' (5m)
30 - 45 mph (50 - 70 km/h)	75' (23m)	20' (6m)
Over 45 mph (70 km/h)	150' (46m)	30' (9m)



All dimensions are in inches (millimeters) unless otherwise noted.