

STATE OF ILLINOIS
DEPARTMENT OF TRANSPORTATION
DIVISION OF HIGHWAYS
PROPOSED
HIGHWAY PLANS

- INDEX OF SHEETS**
- COVER SHEET
 - GENERAL NOTES
 - SUMMARY OF QUANTITIES
 - 5. SCHEDULE OF QUANTITIES
 - 10. TYPICAL SECTIONS
 - 1-39 LINE DIAGRAM
 - 1-39 RUMBLE STRIP DETAIL
 - 14. US 24 PLAN SHEET
 - SIGN PANEL DETAILS

HIGHWAY STANDARDS

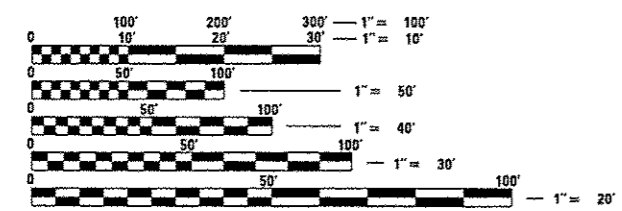
701101-04	701411-08	728001-01
701306-03	701426-06	729001-01
701400-07	701428-01	
701406-08	720006-04	

FAI ROUTE 39 (I-39) & FAP 317 (US 24)
SECTION 102(1-3)1-5,41-4; 62(2,3)1-3, ETC
PROJECT ACHSIP-000S (981)
PEORIA, WOODFORD & MARSHALL COUNTY

DESIGN DESIGNATION

	ADT	MU%	SU%
I-39	15,500	31.4	5.4
US 24	11,000	6.1	5.0

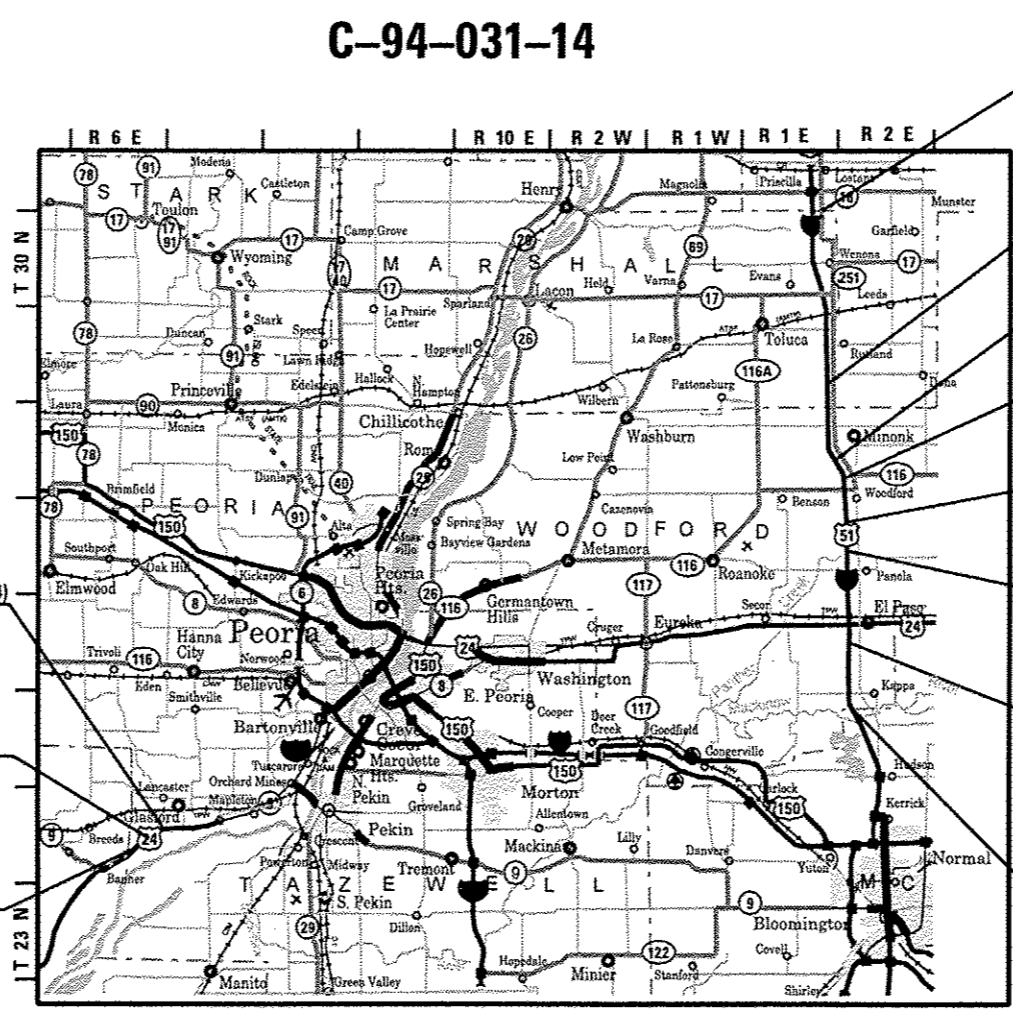
PROJECT DESCRIPTION
 THIS PROJECT CONSISTS OF ADDING RUMBLE STRIP TO THE EXISTING PCC SHOULDER ALONG INTERSTATE 39 AND ADDING RUMBLE STRIP AND CHEVRON INSTALLATION ON US 24, AND OTHER RELATED COLLATERAL WORK NECESSARY TO COMPLETE THE PROJECT.



FULL SIZE PLANS HAVE BEEN PREPARED USING STANDARD ENGINEERING SCALES. REDUCED SIZED PLANS WILL NOT CONFORM TO STANDARD SCALES. IN MAKING MEASUREMENTS ON REDUCED PLANS, THE ABOVE SCALES MAY BE USED.

J.U.L.I.E.
 JOINT UTILITY LOCATION INFORMATION FOR EXCAVATION
 1-800-892-0123
 OR 811

PROJECT ENGINEER: LEONEL CRESPO (309) 671-3456
PROJECT MANAGER: RICHARD DOTSON (309) 671-3455
 CATALOG NO. 035042-00D
CONTRACT NO. 68B68



IMPROVEMENT BEGINS (US-24)
 STA. 587 + 81.87

STA. EQUATION
 STA. 605 + 85(BK) = 605 + 89(AH)

IMPROVEMENT ENDS (US-24)
 STA. 606 + 95.28

IMPROVEMENT ENDS (I-39)
 STA. 519 + 36.26

STA. EQUATION
 STA. 1245 + 25.24(BK) = 77 + 88.00(AH)

STA. EQUATION
 STA. 277 + 44.18(BK) = 930 + 68.49(AH)

OMISSION ENDS
 N.B. STA. 130 + 87.00
 S.B. STA. 148 + 00.00

STA. EQUATION
 STA. 850 + 89.70(BK) = 52 + 79.38 (AH)

OMISSION BEGINS
 N.B. STA. 710 + 01.00
 S.B. STA. 706 + 94.00

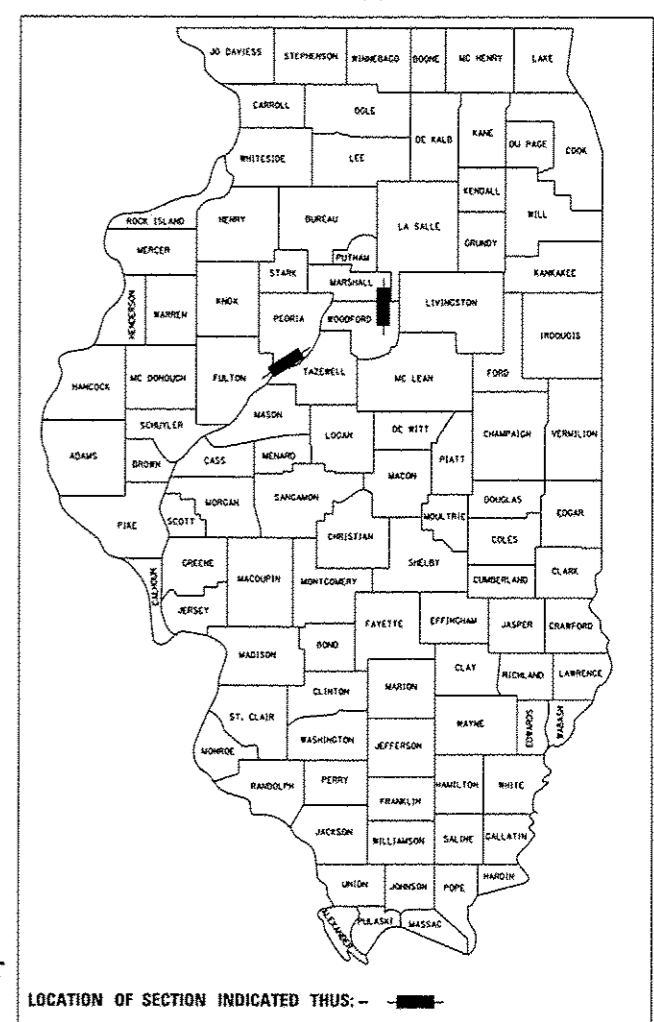
STA. EQUATION
 STA. 821 + 26.83(BK) = 417 + 00.00(AH)

IMPROVEMENT BEGINS (I-39)
 STA. 557 + 87.88

LOCATION 1 - PEORIA CO.
 US 24:
 GROSS LENGTH = 2,000 FT
 NET LENGTH = 1,407 FT = 0.3 MILE

LOCATION 2 - WOODFORD TO MARSHALL CO.
 NORTHBOUND:
 GROSS LENGTH = 167,798.5 FT = 31.8 MILES
 NET LENGTH = 145,902.1 FT = 27.6 MILES

SOUTHBOUND:
 GROSS LENGTH = 167,798.5 FT = 31.8 MILES
 NET LENGTH = 143,882.1 FT = 27.3 MILES



STATE OF ILLINOIS
 DEPARTMENT OF TRANSPORTATION
 DIVISION OF HIGHWAYS

SUBMITTED *JAN 30 2014*

March 21 2014
John D. Baranzelli P.E. PE
 DEPUTY DIRECTOR OF HIGHWAYS, REGION ENGINEER

March 21 2014
Omer Osman P.E. PE
 DIRECTOR OF HIGHWAYS, CHIEF ENGINEER

**PRINTED BY THE AUTHORITY
 OF THE STATE OF ILLINOIS**