

F.A.P. RTE.	SECTION	COUNTY	TOTAL SHEETS	SHEET NO.
318	6-1	PEORIA	6	1
ILLINOIS			CONTRACT NO. 68B72	

STATE OF ILLINOIS
DEPARTMENT OF TRANSPORTATION
DIVISION OF HIGHWAYS

**PROPOSED
HIGHWAY PLANS**

FAP ROUTE 318 (IL 29)
SECTION 6-1
PEORIA COUNTY
C-94-067-14

1. COVER SHEET
2. GENERAL /PROJECT SPECIFIC NOTES
3. SUMMARY OF QUANTITIES
4. TYPICAL SECTIONS
5. SCHEDULE OF QUANTITIES
6. PLAN

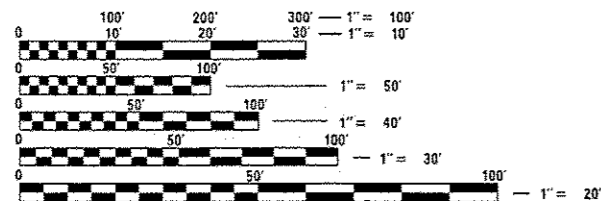
HIGHWAY STANDARDS

701201-04
701301-04
701311-03
701901-03
780001-04
781001-03
BLR 21-9

DESIGN DESIGNATION:
CLASS III TRUCK ROUTE

FUNCTIONAL CLASSIFICATION:
OTHER ARTERIAL

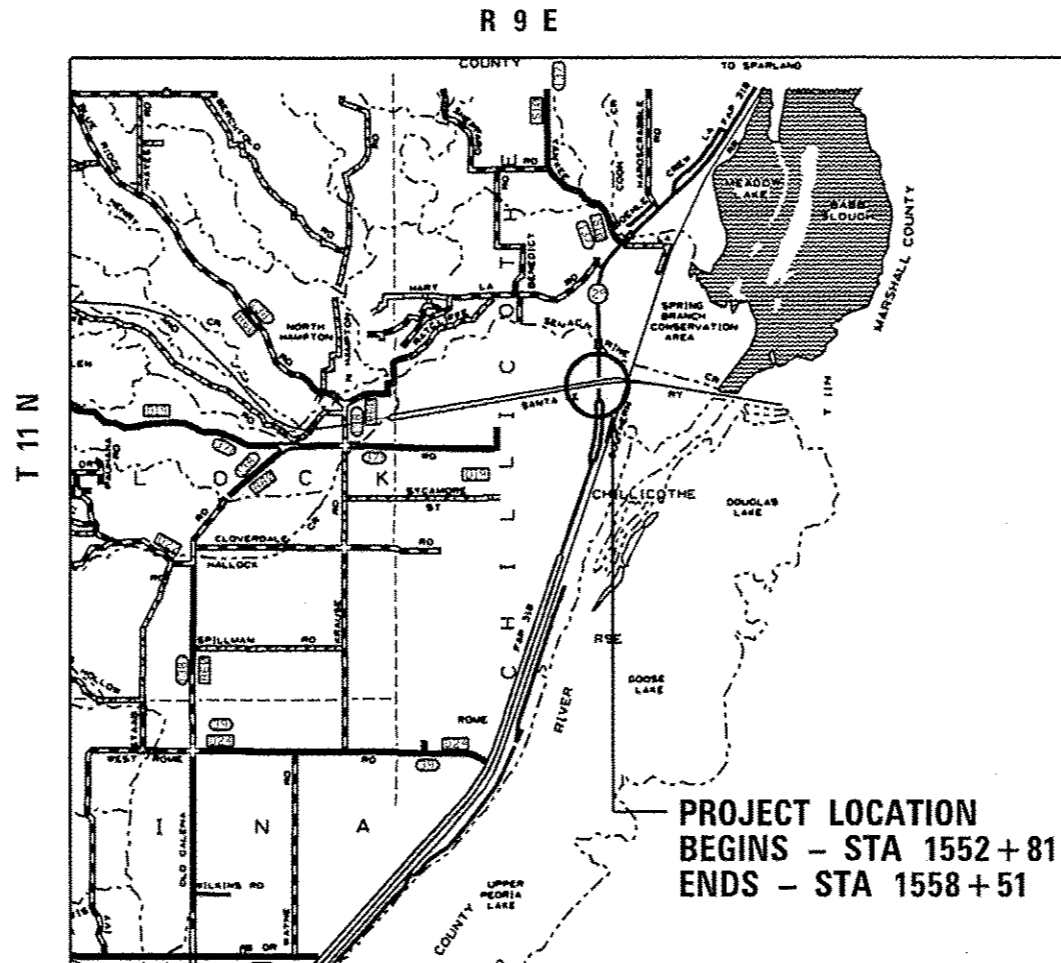
ADT = 8800
%SU = 2.8%
%MU = 8.5%



FULL SIZE PLANS HAVE BEEN PREPARED USING STANDARD ENGINEERING SCALES. REDUCED SIZED PLANS WILL NOT CONFORM TO STANDARD SCALES. IN MAKING MEASUREMENTS ON REDUCED PLANS, THE ABOVE SCALES MAY BE USED.

J.U.L.I.E.
JOINT UTILITY LOCATION INFORMATION FOR EXCAVATION
1-800-892-0123
OR 811

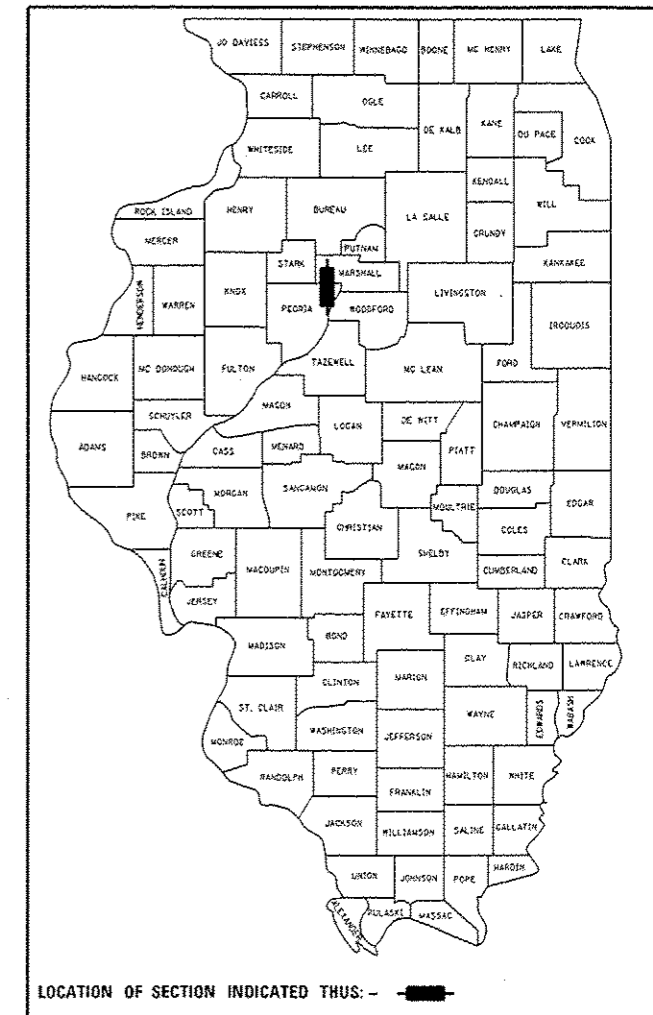
PROJECT ENGINEER RICH DOTSON (309) 671-3476
PROJECT MANAGER MIKE JACOBS (309) 671-3455
CATALOG NO. 035094-00D
CONTRACT NO. 68B72



PROJECT LOCATION
BEGINS - STA 1552 + 81
ENDS - STA 1558 + 51

GROSS LENGTH = 570 FT. = 0.11 MILE
NET LENGTH = 570 FT. = 0.11 MILE

D-94-014-14



LOCATION OF SECTION INDICATED THUS: - [black rectangle] -

PROJECT DESCRIPTION -
PAVEMENT REMOVAL AND REPLACEMENT
COURSE ALONG IL 29 AT THE
BNSF RR VIADUCT CHILLYCOTHE

STATE OF ILLINOIS
DEPARTMENT OF TRANSPORTATION
DIVISION OF HIGHWAYS
SUBMITTED March 21 20 14
Joseph E. Woodruff
DEPUTY DIRECTOR OF HIGHWAYS, REGION ENGINEER
March 21 20 14
John D. Baranzelli, PE
ENGINEER OF DESIGN AND ENVIRONMENT
March 21 20 14
Omer Osman, PE
DIRECTOR OF HIGHWAYS, CHIEF ENGINEER

PRINTED BY THE AUTHORITY
OF THE STATE OF ILLINOIS

GENERAL NOTES

107.00 COMMITMENTS

No commitments have been made for this project.

107.09 PROPERTY OWNER ACCESS REQUIREMENTS

Access must be maintained to all existing properties during construction per Article 107.09 unless arrangements are made in writing by the Contractor with the property owners with a copy to the Engineer for short-term closures.

204.00 ENVIRONMENTAL REVIEWS

Prior to the use of any proposed borrow areas, use areas (temporary access roads, detours, run-arounds, etc.) and/or waste areas, the Contractor shall file the required environmental resource request surveys according to Section 107.22 of the Standard Specifications. These surveys are required in order for the Department to conduct cultural and biological resource surveys for the proposed site.

The required environmental resource documentation shall include the following:

- *BDE Form 2289 (Environmental Survey Request)
- *BDE Form 2290 (Waste/Use Area Review)
- *A location map showing the size limits and location of the use area
- *Color photographs depicting the use area
- *Borrow Area Entry Agreement form-D4 PI0101

Prior to any waste materials being removed from the construction site the required environmental resource surveys will need to be obtained and filed by the Contractor. Excess waste products removed from the construction site shall be disposed of as required in Section 202.03 of the Standard Specifications.

Any protruding metal bars shall be removed prior to the disposal of broken concrete at approved disposal sites.

Please note that a minimum of four weeks shall be allowed for the District to obtain the required environmental clearances and six weeks for the required borrow site environmental clearances.

406.03 PAVEMENT STATIONING NUMBERS & PLACEMENT

The Contractor shall provide labor and materials required to imprint pavement station numbers in the finished surface of the pavement and/or overlay. The numbers shall be approximately 3/4 inch (20mm) wide, 5 inches (125 mm) high and 5/8 inch (15 mm) deep.

The pavement station numbers shall be installed as specified herein:

Interval - 200 feet (English stationing) or 100 meters (metric stationing)

Bottom of Numbers - 6 inches (150 mm) from the inside edge of the pavement marking

Location:

- * 2,3, & 5 Lane Pavements - right edge of pavement in direction of increasing stations
- * Multi-Lane Divided Roadways - outside edge of pavement in both directions
- * Ramps - along baseline edge of pavement

Position - stations shall be placed so they can be read from the adjacent shoulder

Format - English (Metric) pavement stations shall use this format "XXX (XX+X00)" where X represents the pavement station

This work will not be paid for separately, but will be considered included in the cost of the associated pavement and/or overlay pay items.

406.05 POLYMERIZED BITUMINOUS MATERIALS (PRIME COAT) RATES

Surface Type	Estimated Truck Application Rate	Residual Rate
Milled (HMA or PCC)	0.10 gal/sy (0.0004 ton/sy)	0.05 gal/sy
Existing Pavement	0.05 gal/sy (0.00022 ton/sy)	0.025 gal/sy
Fog Coat (between lifts)	0.05 gal/sy (0.00022 ton/sy)	0.025 gal/sy

Note: Estimated truck application rate is used for estimating quantities.

406.10 HOT-MIX ASPHALT MIXTURE REQUIREMENTS

Mixture Use(s):	FULL DEPTH
RAP % (Max):	15%
AC/PC:	6422
Design Air Voids:	4.0% N=50
Mixture Composition:	IL 9.5 OR 12.5
(Gradation Mixture)	
Friction Aggregate	MIX D (Dolomite only)

Notes: Individual lift thickness of each mix type will be no less than 3 times nominal maximum aggregate size and no more than 6 times nominal aggregate size.

406.19 PAVING SURFACE COURSE

Continuous paving operations on the main roadway shall be maintained at all times during the construction of the hot-mix asphalt surface. No interruptions for side roads, entrances, turn lanes, etc. will be allowed.

606.14 TRANSITION PAYMENT METHOD - NEWOLD CONSTRUCTION

Three meter (10 ft.) (3m) transitions shall be used to match proposed items of work to existing items in the field unless otherwise shown. The transition shall be paid for at the contract unit price for the proposed item of work specified.

780.00 NO PASSING ZONE VERIFICATION

The resident shall contact Operations to verify the location of no passing zones prior to placement of centerline striping.

PROJECT SPECIFIC NOTES

1. APPLICATION RATES:

HMA mixes 112lb./sq yd An.

2. IDOT District Four Operations will sign a detour to be used while IL 29 is closed to traffic. The Contractor shall coordinate the closure with Bill Harrmann, (309) 370-7513, in District Four Operations at least one week prior to each closure.

3. The contractor shall use 2 changeable message signs for one week prior to each closure of Il route 29 to provide advanced notice motorists.

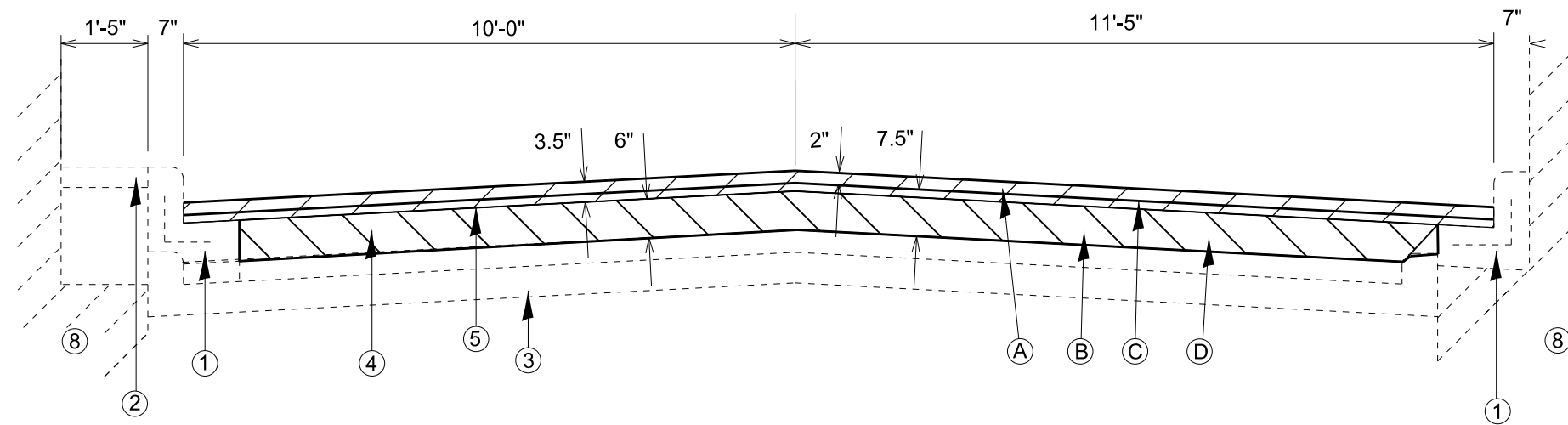
4. See Special Provisions for suggested staging.

FILE NAME = mikejprtdoc1.dgn	USER NAME = ksh3br	DESIGNED -	REVISOR -	STATE OF ILLINOIS DEPARTMENT OF TRANSPORTATION	GENERAL /PROJECT SPECIFIC NOTES				F.A.P RTE.	SECTION	COUNTY	TOTAL SHEETS	SHEET NO.
		DRAWN -	REVISOR -		318	6-1	PEORIA	6	2				
	PLOT SCALE = 40.0000' / 1" =	CHECKED -	REVISOR -		CONTRACT NO. 68872								
Default	PLOT DATE = 3/24/2014	DATE -	REVISOR -		SCALE:	SHEET	OF	SHEETS	STA.	TO	STA.	[ILLINOIS] FED. AID PROJECT	

CODE NO.	ITEM	UNIT	TOTAL QUANTITY	CONST. CODE
				100% STATE
				0005
20200100	EARTH EXCAVATION	CU YD	55	55
28000510	INLET FILTERS	EACH	6	6
40603000	HOT - MIX ASPHALT BINDER COURSE, IL - 12.5, N50	TON	588	588
40603335	HOT - MIX ASPHALT SURFACE COURSE, MIX "D", N50	TON	157	157
44000100	PAVEMENT REMOVAL	SO YD	1400	1400
67100100	MOBILIZATION	L SUM	1	1
70100450	TRAFFIC CONTROL AND PROTECTION, STANDARD 701201	L SUM	1	1
70101830	TRAFFIC CONTROL AND PROTECTION, STANDARD BLR 21	L SUM	1	1
70106800	CHANGEABLE MESSAGE SIGN	CAL MO	1	1
70300100	SHORT-TERM PAVEMENT MARKING	FOOT	60	60
70301000	WORK ZONE PAVEMENT MARKING REMOVAL	SO FT	20	20
* 78009004	MODIFIED URETHANE PAVEMENT MARKING - LINE 4"	FOOT	2280	2280
* 78100100	RAISED REFLECTIVE PAVEMENT MARKER	EACH	8	8
70034105	MATERIAL TRANSFER DEVICE	TON	745	745
Z0048665	RAILROAD PROTECTIVE LIABILITY INSURANCE	L SUM	1	1

* SPECIALTY ITEM

FILE NAME : mikejriedko1.dgn	USER NAME : ka10br	DESIGNED -	REVISED -	STATE OF ILLINOIS DEPARTMENT OF TRANSPORTATION	SUMMARY OF QUANTITIES	F.A.P. RTE.	SECTION	COUNTY	TOTAL SHEETS	SHEET NO.	
	PLDT SCALE : 40.0000' / in.	DRAWN -	REVISED -			318	6-1	PEDRIA	6	3	
	PLDT DATE : 3/24/2014	CHECKED -	REVISED -			CONTRACT NO. 68872					
		DATE -	REVISED -			[ILLINOIS] FED. AID PROJECT					

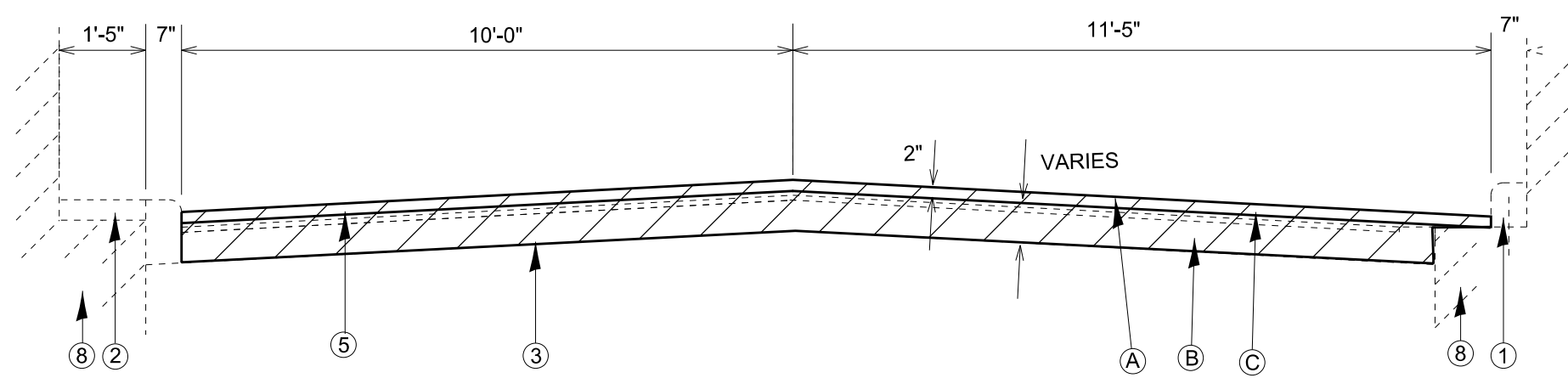


- EXISTING TYPICAL SECTION**
- ① CONC. CURB & GUTTER
 - ② PCC SIDEWALK 4"
 - ③ PCC PAVEMENT WITH MONOLITHIC CURB
 - ④ GRANULAR EMBANKMENT
 - ⑤ EXISTING HMA OVERLAYS (APPROX. 3.5")
 - ⑥ VIADUCT FOOTING

1557+20 to 1558+51

PROPOSED TYPICAL SECTION

- Ⓐ HMA SURFACE COURSE, MIX "D", N50, (2.0")
- Ⓑ HMA BINDER COURSE, IL-12.5, N50, (7.5")
- Ⓒ PAVEMENT REMOVAL (VARIES)
- Ⓓ EARTH EXCAVATION (6.0")



1552+81 TO 1557+20

FILE NAME = mikejviaduct.dgn	USER NAME = keathbr	DESIGNED -	REVISED -	STATE OF ILLINOIS DEPARTMENT OF TRANSPORTATION	TYPICAL SECTIONS				F.A.P. RTE.	SECTION	COUNTY	TOTAL SHEETS	SHEET NO.
	PLOT SCALE = 48.0000' / in.	DRAWN -	REVISED -		318	6-1	PEORIA	6	4				
Default	PLOT DATE = 3/24/2014	CHECKED -	REVISED -	SCALE:	SHEET	OF	SHEETS	STA.	TO	STA.	ILLINOIS FED. AID PROJECT CONTRACT NO. 68B72		

LOCATION	PAVEMENT REMOVAL (SQ. YD.)	HMA BINDER COURSE, IL-12.5, N50 (TON)	HMA SURFACE COURSE, MIX "D", N50 (TON)	MODIFIED URETHANE PAVEMENT MARKING - LINE 4"		SHORT TERM PAVEMENT MARKING (FT.)	WORK ZONE PAVEMENT MARKING REMOVAL (SQ. FT.)	INLET FILTERS (EACH)	RAISED REFLECTIVE PAVEMENT MARKER (EACH)
				WHITE (FT.)	YELLOW (FT.)				
IL ROUTE 29 STA. 1552+81 TO STA. 1558+51	1400	588	157	1140	1140	60	20	6	8
TOTAL	1400	588	157	2280		60	20	6	8

LOCATION	MOBILIZATION (L. SUM)	TRAFFIC CONTROL AND PROTECTION, STANDARD BLR 21 (L. SUM)	TRAFFIC CONTROL AND PROTECTION, STANDARD 701201 (L. SUM)	RAILROAD PROTECTIVE LIABILITY INSURANCE (L. SUM)	CHANGEABLE MESSAGE SIGN (CAL. MO.)
IL ROUTE 29 ENTIRE JOBSITE	1	1	1	1	1
TOTAL	1	1	1	1	1

LOCATION	EARTH EXCAVATION (CU. YD.)
IL ROUTE 29 STA. 1557+20 TO STA. 1558+51	55
TOTAL	55

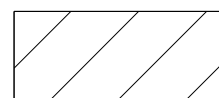
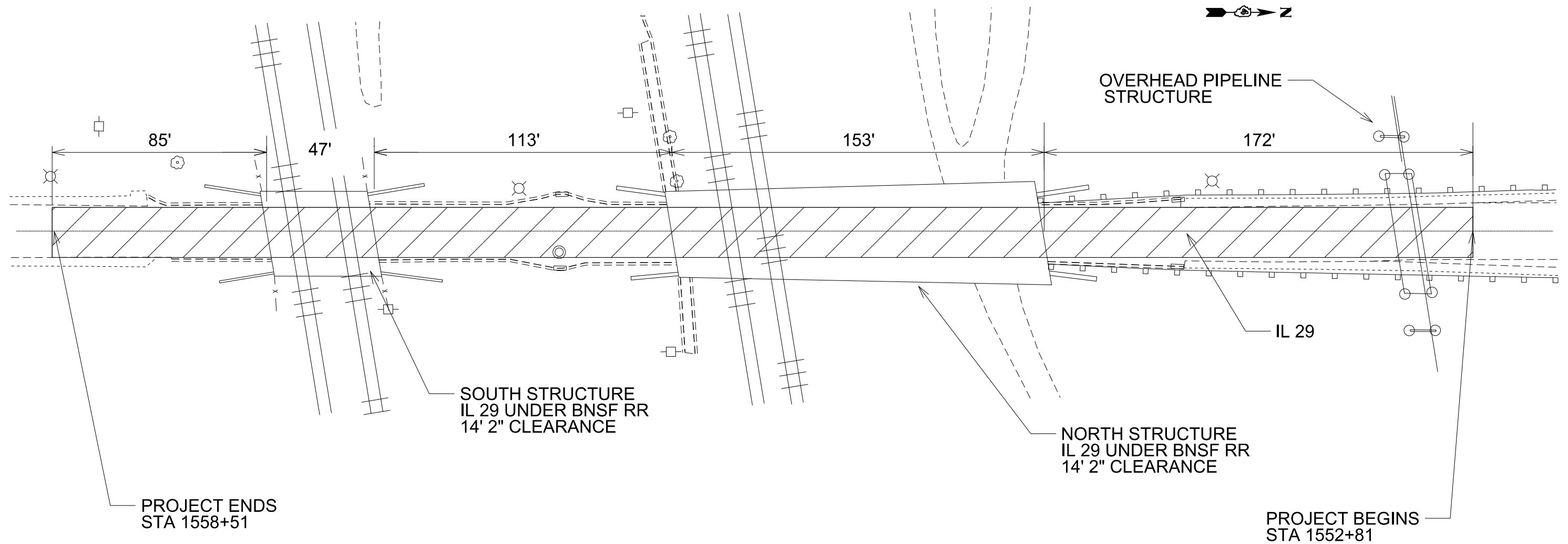
NOTE: ALL THE EARTH EXCAVATION WILL BE WASTE.

FILE NAME = mikejvioduct.dgn	USER NAME = keithbr	DESIGNED -	REVISED -
		DRAWN -	REVISED -
		CHECKED -	REVISED -
		DATE -	REVISED -

**STATE OF ILLINOIS
DEPARTMENT OF TRANSPORTATION**

SCHEDULE OF QUANTITIES

F.A.P. RTE.	SECTION	COUNTY	TOTAL SHEETS	SHEET NO.
318	6-1	PEORIA	6	5
ILLINOIS FED. AID PROJECT			CONTRACT NO. 68B72	



PAVEMENT REMOVAL, HOTMIX ASPHALT BINDER / SURFACE COURSE

FILE NAME = mikejvioduct.dgn	USER NAME = keathbr	DESIGNED -	REVISED -
Default	PLOT SCALE = 40.0000' / in.	DRAWN -	REVISED -
	PLOT DATE = 3/24/2014	CHECKED -	REVISED -
		DATE -	REVISED -

STATE OF ILLINOIS
DEPARTMENT OF TRANSPORTATION

IL 29 UNDER BNSF RR
PLAN

SCALE: SHEET OF SHEETS STA. TO STA.

F.A.P. RTE.	SECTION	COUNTY	TOTAL SHEETS	SHEET NO.
318	6-1	PEORIA	6	6
CONTRACT NO. 68B72				
ILLINOIS FED. AID PROJECT				