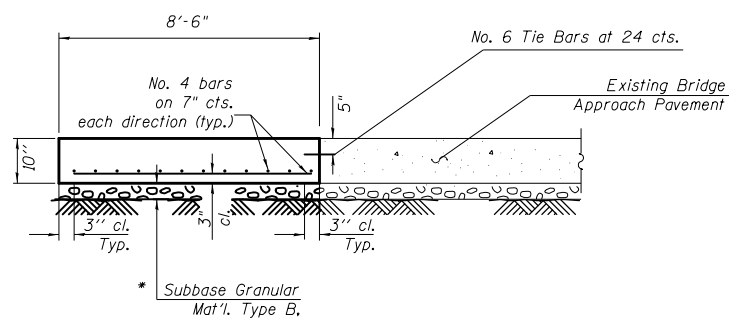
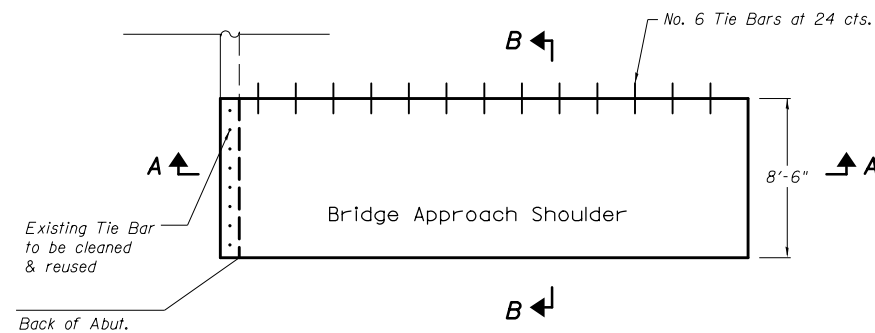


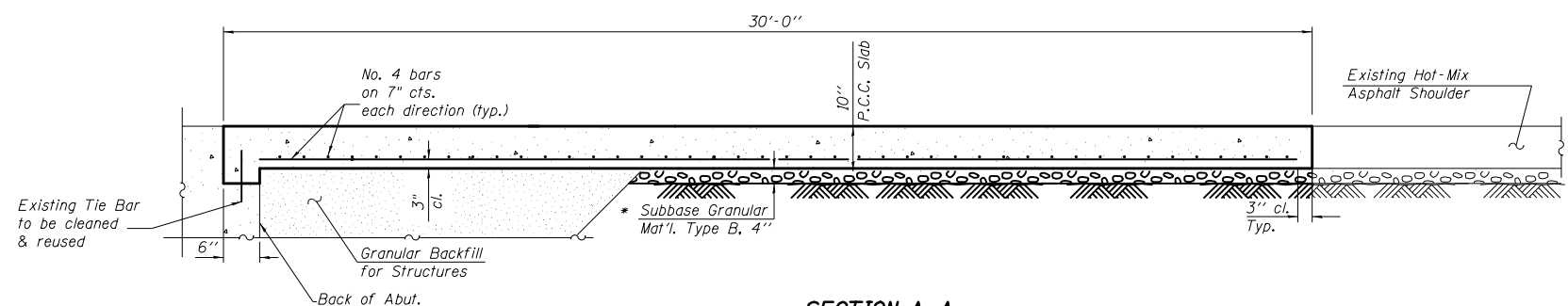
**GENERAL PLAN**



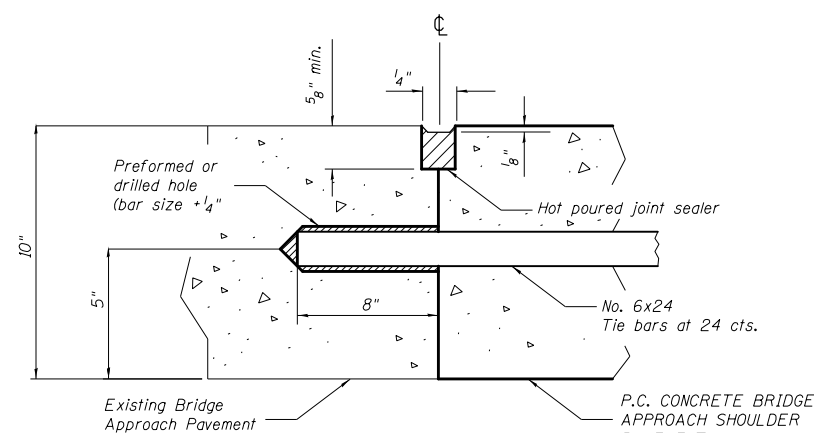
**SECTION B-B**



**TYPICAL DETAIL PLAN (w/o Wingwall)**



**SECTION A-A**



**LONGITUDINAL CONSTRUCTION JOINT (TIE BAR GROUTED IN PLACE)**

**BILL OF MATERIAL**

Bar Size	No.	Length	Shape
#6	14	2'-0"	—
#4	14	8'-0"	—
#4	51	29'-3"	—
Concrete Superstructure	Cu. Yd.	8.0	
Reinforcement Bars, Epoxy Coated	Pound	1130	

\* Cost included with P.C. CONCRETE BRIDGE APPROACH SHOULDER PAVEMENT.

Notes:  
 Bridge approach shoulder pavement will be measured in place and paid for in SQ YD as P.C. CONCRETE BRIDGE APPROACH SHOULDER PAVEMENT, which shall include the cost of any subgrade preparation, expansion joints, tie bars, epoxy coated reinforcement bars and joint fillers.  
 For placement of drainage elements on existing construction with existing rigid pavement, substitute expansion anchor ties for tie bars.  
 For nonrigid pavements or monolithic construction of pcc slab and shoulder, omit tie bars.