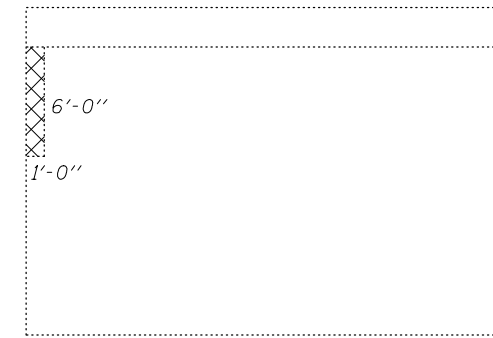


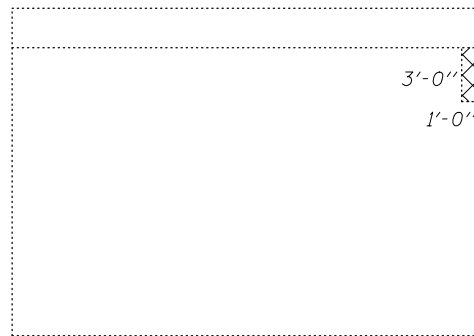
ELEVATION - N.W. WINGWALL



ELEVATION - NORTH ABUTMENT
(North Abut. - Looking North)



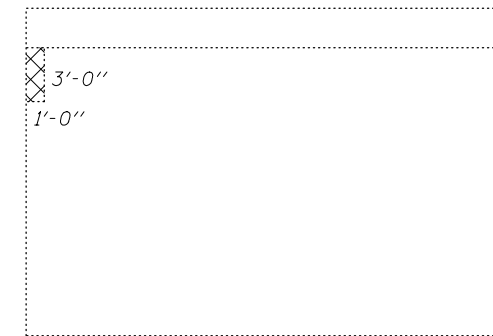
ELEVATION - N.E. WINGWALL



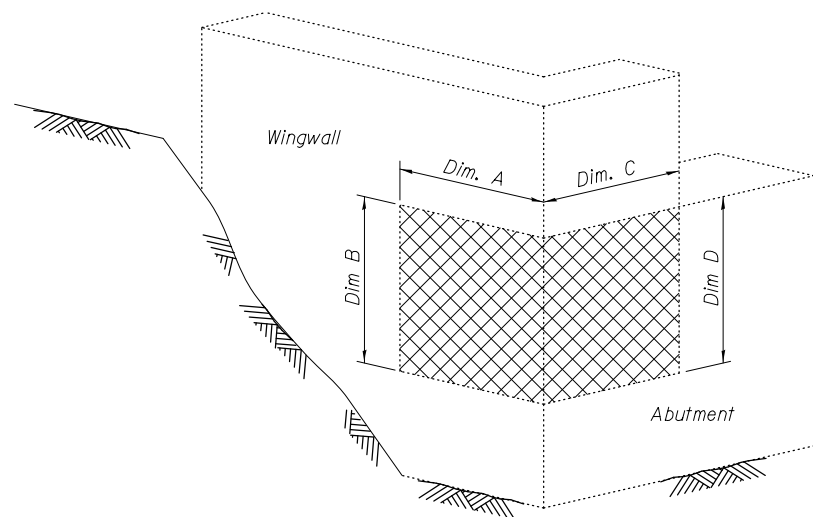
ELEVATION - S.E. WINGWALL



ELEVATION - SOUTH ABUTMENT
(South Abut. - Looking South)



ELEVATION - S.W. WINGWALL




ISOMETRIC VIEW AT ABUTMENT CORNER

STRUCTURAL REPAIR OF CONCRETE
TABLE

Abutment Corner	Repair Area Dimensions				Repair Area Sq. Ft.
	Wingwall		Abutment		
	A	B	C	D	
Northeast	1'-0"	6'-0"	2'-6"	4'-0"	16.0
Northwest	4'-0"	3'-0"	2'-6"	6'-0"	27.0
Southeast	1'-0"	3'-0"	2'-6"	4'-0"	13.0
Southwest	1'-0"	3'-0"	2'-6"	5'-0"	15.5

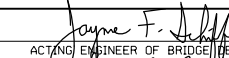

LEGEND

 Structural Repair of Concrete (Depth ≤ 5")

BILL OF MATERIAL

Item	Unit	Quantity
Structural Repair of Concrete (Depth ≤ 5")	Sq. Ft.	72

DESIGNED - Josue Ortiz-Varela
CHECKED - Meseret Sima
DRAWN - h.t. duong
CHECKED - JQV/MS/GRA

EXAMINED - 
ACTING ENGINEER OF BRIDGE DESIGN
PASSED - 
ACTING ENGINEER OF BRIDGES AND STRUCTURES

DATE - MARCH 24, 2014
REVISED -
REVISED -

STATE OF ILLINOIS
DEPARTMENT OF TRANSPORTATION

STRUCTURAL REPAIR OF CONCRETE
STRUCTURE NO. 020-0046

SHEET NO. 10 OF 10 SHEETS

F.A.P. RTE.	SECTION	COUNTY	TOTAL SHEETS	SHEET NO.
322	54B-3, 54B-2	DEWITT	89	54
CONTRACT NO. 70606				
ILLINOIS FED. AID PROJECT				