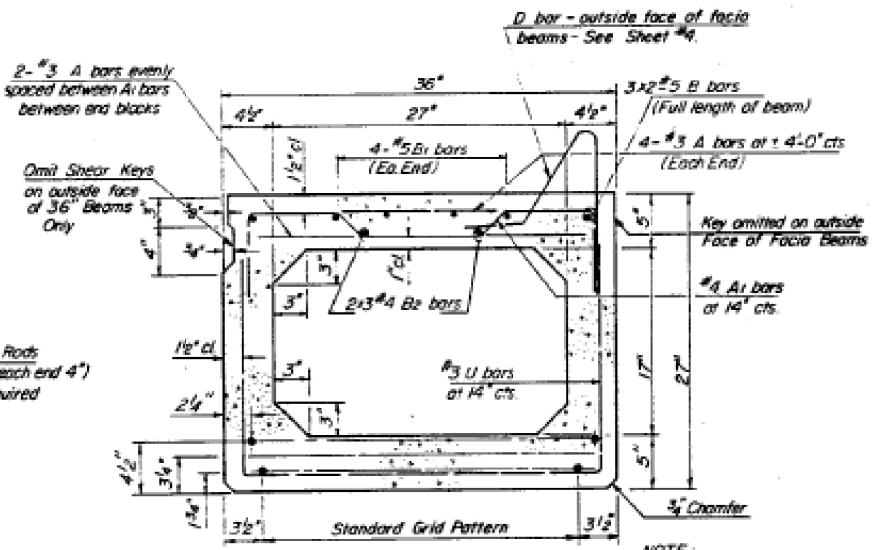
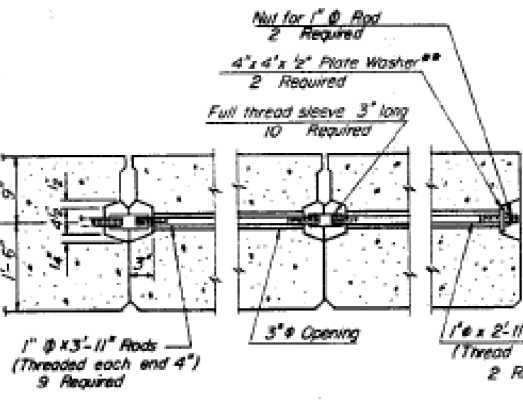
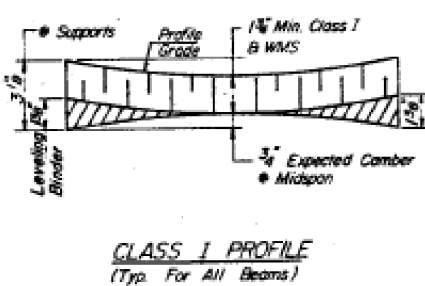
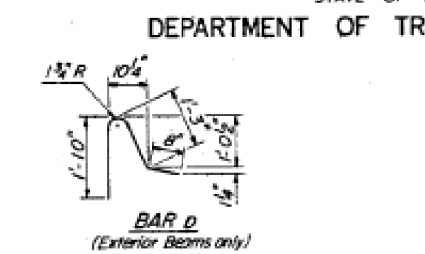
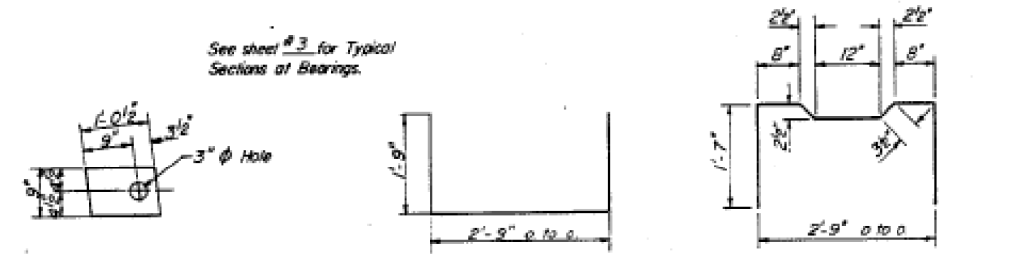


STATE OF ILLINOIS
DEPARTMENT OF TRANSPORTATION

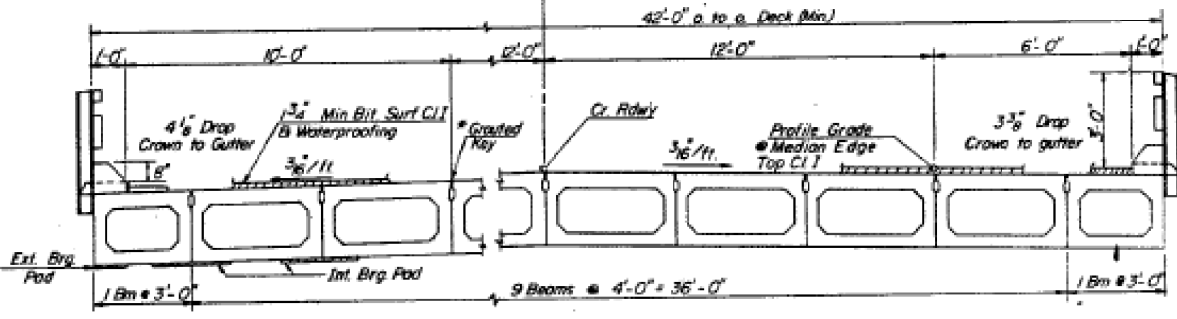
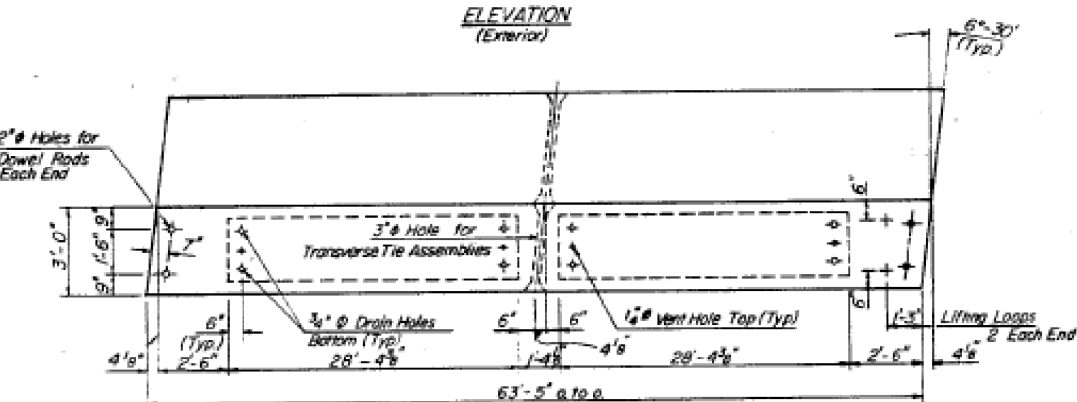
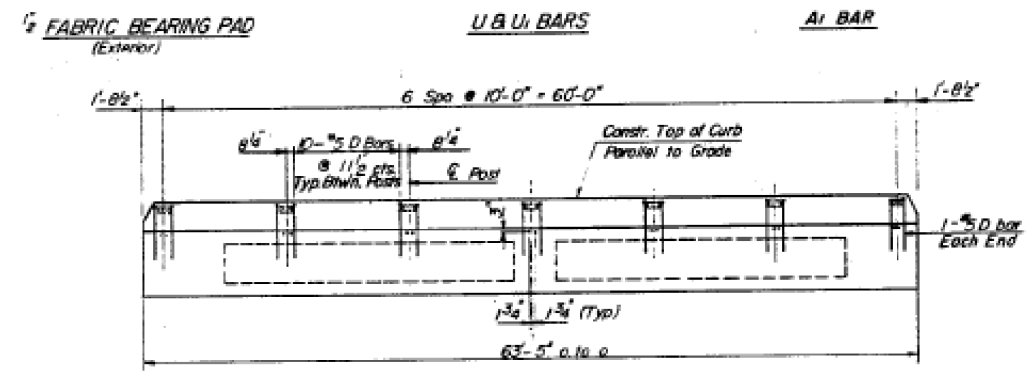
ROUTE NO.	SECTION	COUNTY	TOTAL SHEETS	SHEET NO.
F.A.P. 412	5	DEWITT	101	57
FED. ROAD DIST. NO. 7		ILLINOIS	FED. AID PROJECT	
154E-51-021, 541B-1, 2, 3A-2				

SHEET NO. 2
6 SHEETS

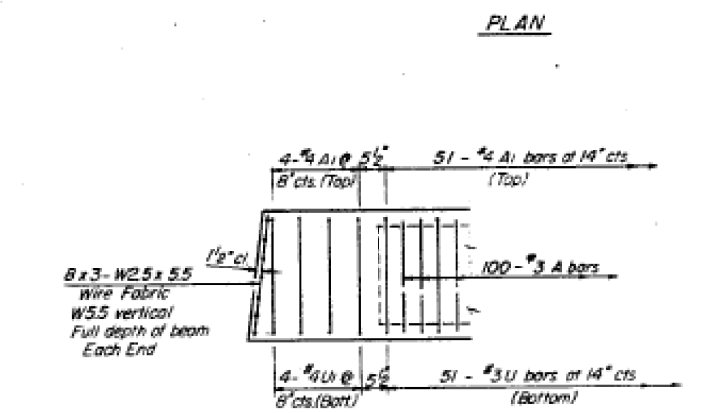


NOTE:
Place strands symmetrically about E beam, and to miss drain holes cast in beam.

15-#2 Strands, Each Strand Stressed to 28,900 lbs
6-Strands 1-3/4" up, 7-Strands 3/4" up, 2-Strands 4 1/2" up.

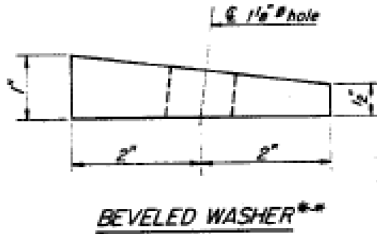


For Details of Rolling Curb, B Drains See Sheet No. 4.



* See Special Provisions

FOR LIFTING LOOP DETAIL SEE SHEET NO. 3



** If bearing face of concrete is cast parallel to outside face of beam, use beveled plate washers as shown above.

NOTES

Prestressing steel shall be non-galvanized high strength, stress-relieved 7-wire strand, Grade 270.
The nominal diameter shall be 1/2" and the nominal cross-sectional area shall be 0.153 sq. in.
Lifting loops shall be 3/4" diameter, 6x25 class wire rope with fiber core and shall have a minimum ultimate tensile strength of 46,000 lbs. or 3-7 Wire stressed relieved 5 @ 270 ksi strands.
The 1" rods in the transverse tie assembly shall be tightened to a snug fit and the threads set. Pockets that receive the bar on outside shall be filled with grout after transverse tie assembly is in place.
Reinforcement bars shall conform to AASHTO M-31 or M-53, Grade 60.
The bearing seat surfaces shall be adjusted by shimming to assure firm and even bearing. Two 1/2" fabric adjusting shims of the dimensions of the Exterior Bearing Pad shall be provided for each bearing.
Keyway surfaces shall be cleaned to remove form oil or other bond breaking material prior to shipment of the beams. Cleaning shall be done by sandblasting the keyway areas between top of the beam and the bottom edge of the key.
Required Release Strength, f_{ci} shall be 4,000 psi.
An equal substitution of the low-relaxation strands for the stress-relieved strands will be permitted.

ONE UNIT BAR SCHEDULE

Bar	No.	Size	Length	Shape
A	108	#3	2'-8"	—
A1	59	#4	6'-1"	—
B	6	#5	22'-9"	—
B1	8	#5	12'-9"	—
B2	6	#4	22'-3"	—
D	62	#5	3'-9"	—
U	51	#3	6'-3"	—
U1	8	#4	6'-3"	—

BILL OF MATERIAL

Precast Prestressed Conc. Deck Beams (27" Depth)	Sq. Ft.	381
--	---------	-----

36" BEAM DETAIL
FAP. 412 (U.S. RTE. 51) OVER
TRIB. OF LONG POINT CREEK
SECTION 54B-2
DEWITT COUNTY
STA 1437+53.04

DESIGNED	E.F.V.
CHECKED	D.V.K.
DRAWN	T.D.
CHECKED	G.E.P.

c:\pwworkspace\jayedf\10200047-70606-012-Ex-BridgePlans.dgn

USER NAME	DESIGNED	REVISIONS
jayedf	CMF	
PLOT SCALE	CHECKED	REVISIONS
@ 2.0000 "/in.	TMM	
PLOT DATE	DRAWN	REVISIONS
1/31/2014	JLM	
	CHECKED	REVISIONS
	TMM	