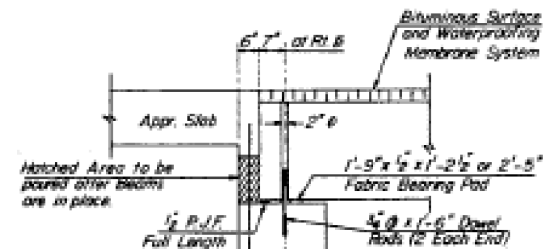
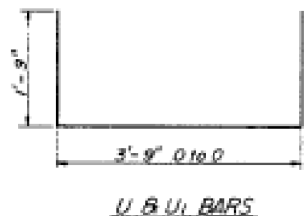
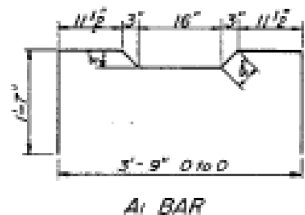
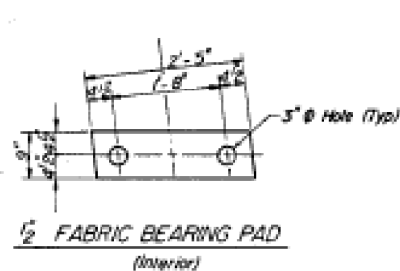


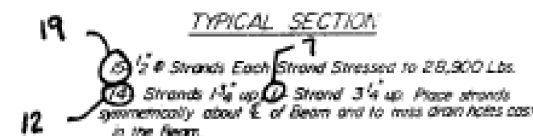
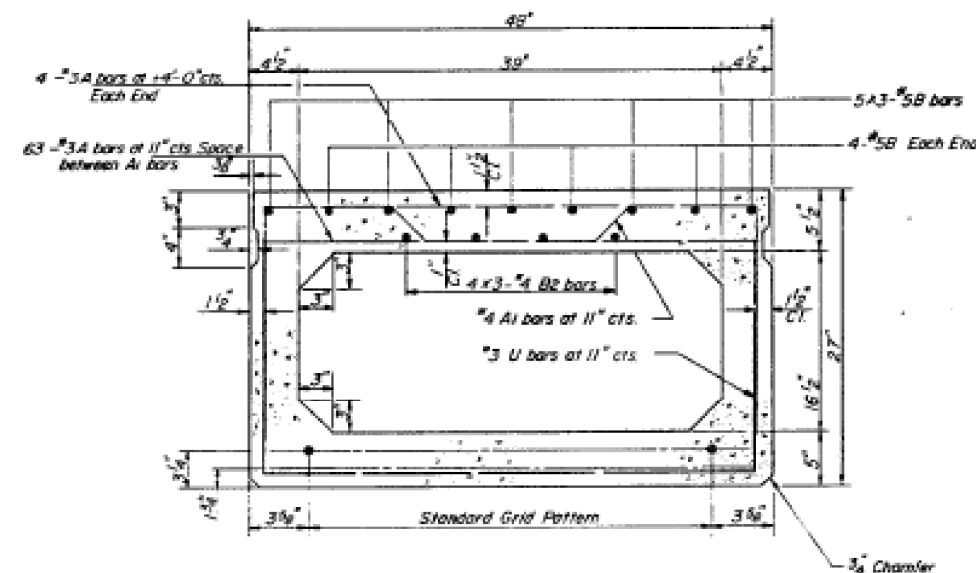
STATE OF ILLINOIS
DEPARTMENT OF TRANSPORTATION

ROUTE NO.	SECTION	COUNTY	TOTAL SHEETS	SHEET NO.	SHEET NO. 3
U.S. 412	8	DEWITT	101	56	6 SHEETS
FED. ROAD DIST. NO. 1		ILLINOIS	FED. PROJ. NO.		
# 548, 57-102, 5418 (R 2, R 2)					



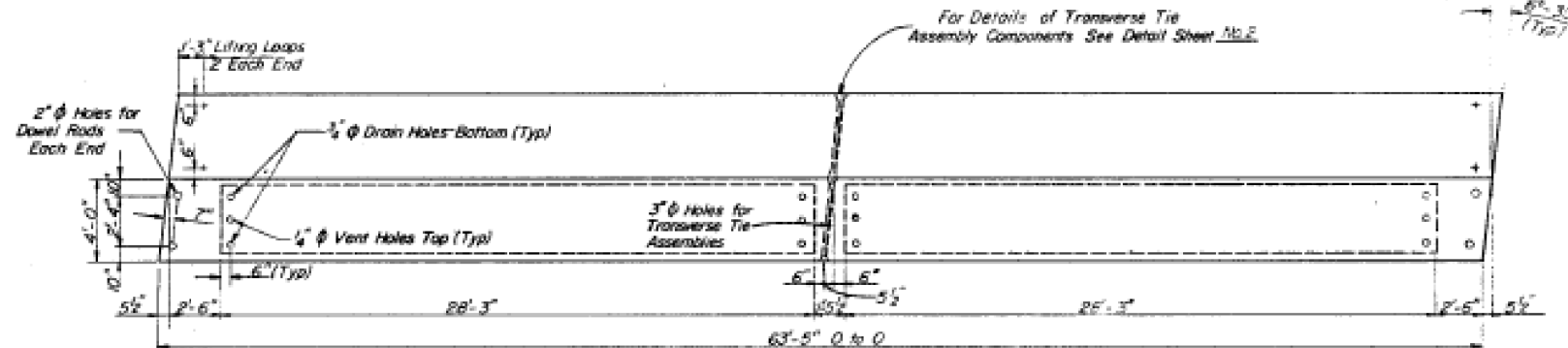
FIXED BRG'S • ABUT'S

Dowel Rods to be grouted after Beams are in place and, prior to grouting the Shear Keys, grout at dowels shall have 3 k.s.i. strength.

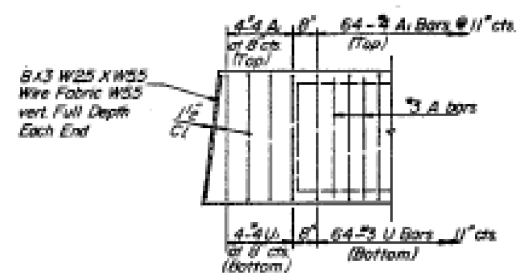


REVISED-4-9-86 JMG

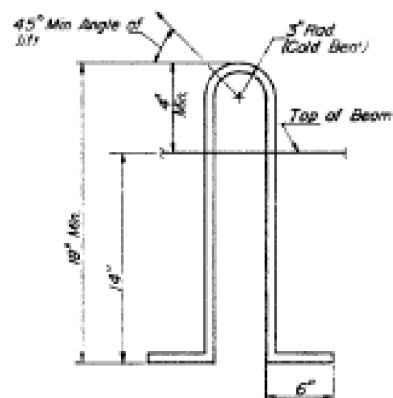
NOTE: See sheet No. 2 for Typical Cross Section.



PLAN

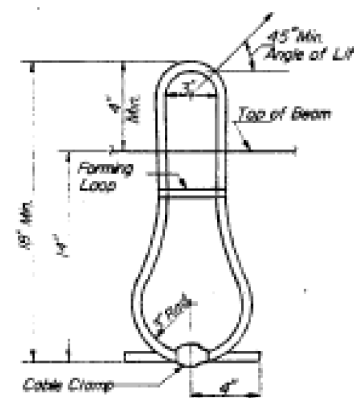


END PLAN



LIFTING LOOP DETAIL

(Lifting Loops consisting of 3-1/2 #270 ksi strands.)



ALTERNATE LIFTING LOOP DETAIL

(Lifting Loops consisting of 3-1/2 #270 ksi strands.)

NOTES

Prestressing steel shall be non-galvanized high strength, stress-relieved 7-wire strand, Grade 270. The nominal diameter shall be 1/2 and the nominal cross-sectional area shall be 0.153 sq. in.
The 1/2 rods in the transverse tie assembly shall be tightened to a snug fit and the threads set. Packers that receive the bar on outside shall be filled with grout after transverse tie assembly is in place.
Reinforcement bars shall conform to AASHTO: M-31 or M-33, Grade 60.
The bearing seat surfaces shall be adjusted by shimming to assure firm and even bearing. Two 1/8 fabric adjusting shims of the dimensions of the Exterior Bearing Pad shall be provided for each bearing.
Lifting loops shall be 3/4 diameter, 6 x 25 class wire rope with fiber core and shall have a minimum ultimate tensile strength of 46,000 lbs, or 3-7 wire stress relieved 1/2 # 270-ksi strands.
Keyway surfaces shall be cleaned to remove form oil or other bond breaking material prior to shipment of the beams. Cleaning shall be done by sandblasting the keyway areas between top of the beam and the bottom edge of the key.
Required Release Strength, f_{cr} shall be 4,000 psi.
An equal substitution of the low-relaxation strands for the stress relieved strands will be permitted.

ONE UNIT BAR SCHEDULE

Bar	No.	Size	Length	Shape
A	71	#3	3'-8"	
A1	72	#4	7'-1"	
B	15	#5	22'-9"	
B1	8	#5	12'-8"	
B2	12	#4	22'-3"	
U	64	#3	7'-3"	
U1	8	#4	7'-3"	

BILL OF MATERIAL		
Precast Prestressed Concrete Deck Beams (27" Depth)	Sq. Ft.	2283

48" BEAM DETAIL
FAR 412 (U.S. RTE. 51) OVER
TRIB. OF LONG POINT CREEK
DEWITT COUNTY
STATION 1437 + 53.04

DESIGNED	E.F.V.
CHECKED	D.V.K.
DRAWN	T.D.
CHECKED	D.V.K.

FOR INFORMATION ONLY

USER NAME	= jaymedf	DESIGNED	- CMF	REVISED	-
PLOT SCALE	= 0:2.0000 "1" = 1"	CHECKED	- TMM	REVISED	-
PLOT DATE	= 1/31/2014	DRAWN	- JLM	REVISED	-
		CHECKED	- TMM	REVISED	-

F.A.P. RTE.	SECTION	COUNTY	TOTAL SHEETS	SHEET NO.
322	548-3, 548-2	DEWITT	89	67
ILLINOIS FED. AID PROJECT			CONTRACT NO. 70606	