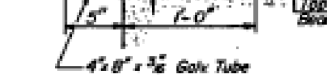
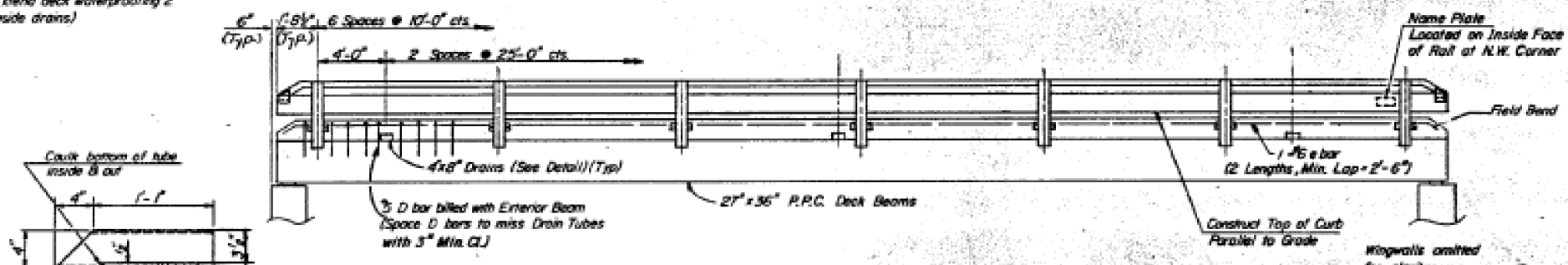
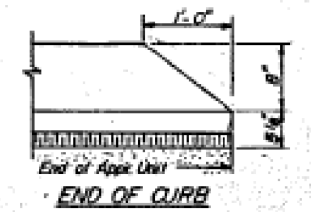


SECTION THRU CURB
Curb shall be poured in the field.

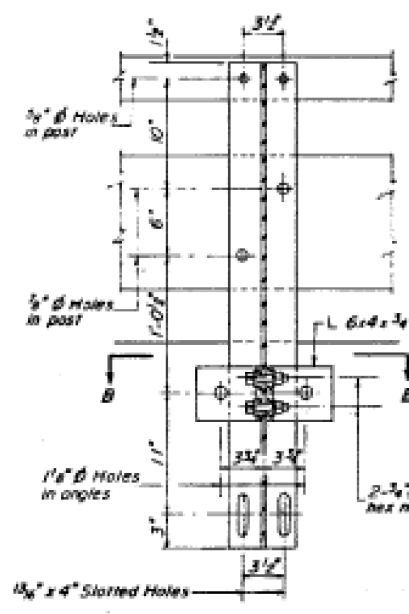


DRAIN DETAIL
(Cost Incidental to Class X Concrete)

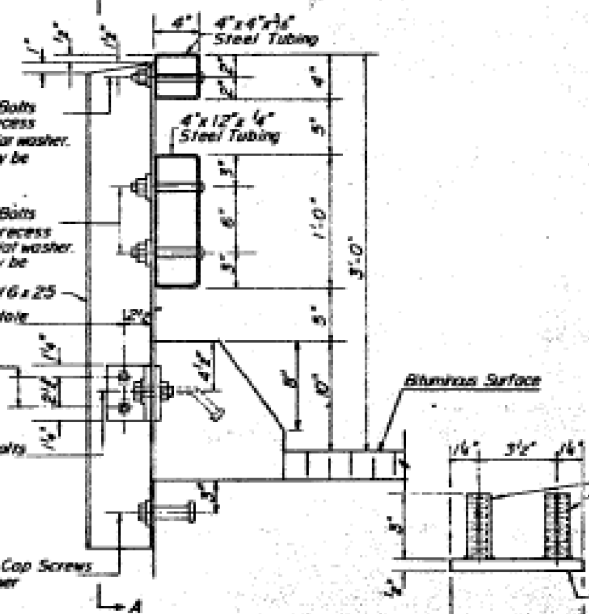


NOTES

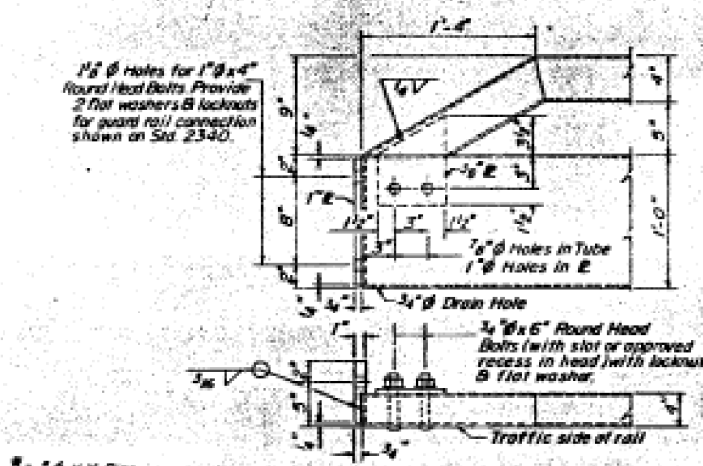
- All structural steel tubing shall conform to the requirements of A.S.T.M. designation A-500 Grade B Structural Steel Tubing.
- All other steel shapes and plates shall conform to the requirements of A.A.S.H.T.O. M-183 except posts and angles shall conform to A.A.S.T.H.O. M-223, Grade 50.
- Bolts, cap screws and nuts shall conform to the requirements of A.S.T.M. designation A-307 except for high strength bolts, nuts and washers noted which shall conform to A.A.S.H.T.O. M-184.
- All bolts, nuts, cap screws, washers and lock washers shall be galvanized in accordance with A.A.S.H.T.O. M-232.
- All posts, railing, rail splices, anchor devices and angles shall be galvanized after shop fabrication in accordance with A.A.S.H.T.O. M-181 and A.S.T.M. A-395 Galvanized rail shall not be painted.
- Railing shall be in accordance with Section 505 of the Standard Specifications, except as noted, and shall be paid for at the contract unit price per linear foot for STEEL RAILING, TYPE T-1.
- All field drilled holes shall be coated with an approved zinc rich paint before erection.
- The lower portion of the post flange in contact with concrete shall receive two coats of asphalt paint conforming to Section 714.00 Type B or place 1/2" fabric bearing pad between the post and concrete.
- The 1/2" high strength bolts used to connect the 6x4x1/2 angles to the post shall be tightened in accordance with Article 307.04 (g)(3) of the Standard Specifications. The 1" high strength bolts connecting the angles to the concrete shall be tightened to a snug fit and given an additional 1/4 turn. The 3/8" cap screws in bottom of posts shall be tightened to a snug fit only.



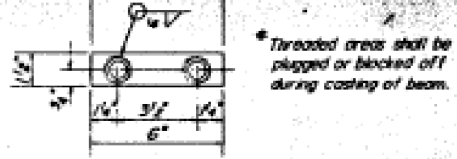
SECTION A-A



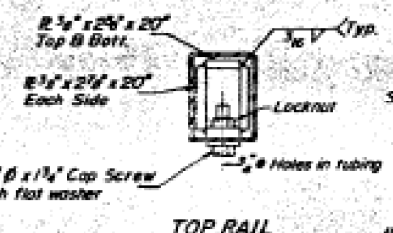
SECTION AT RAIL POST



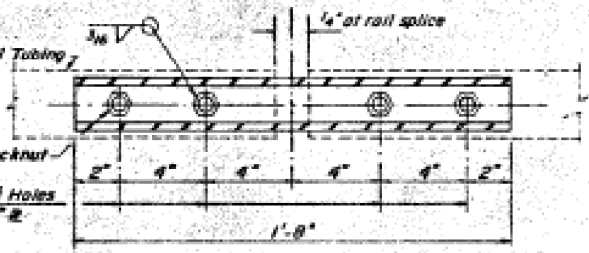
END OF RAIL DETAILS



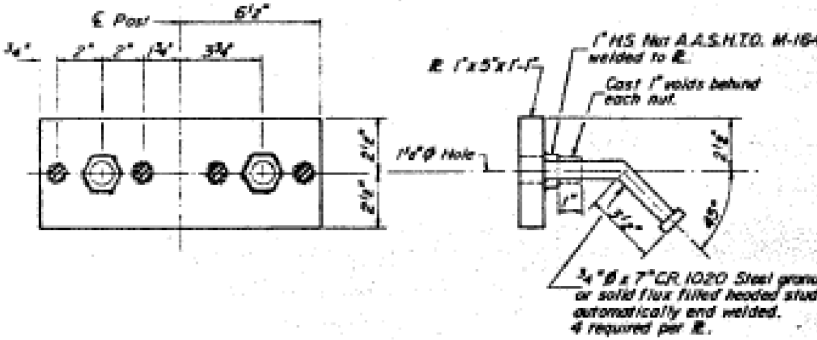
BOTTOM ANCHOR DEVICE



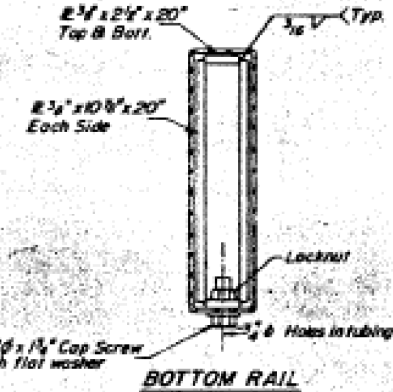
TOP RAIL



PLAN-BOTT. SPLICE R.
TYPICAL



TOP ANCHOR DEVICE



BOTTOM RAIL

SECTIONS AT RAIL SPLICE

**CURB & RAIL
BILL OF MATERIAL**

Bar No.	Size	Length	Shape
1	4	#6	32'-9"
Reinforcement Bars Lbs. 200			
Class X Concrete Cu. Yds. 4.1			
Steel Railing, Type T-1 Lin. Ft. 127			

TYPE T-1
STEEL RAILING
FAP 412 (US. RTE. 51) OVER
TRIB OF LONG POINT CREEK
DEWITT COUNTY
STA 1437+53.04

DESIGNED	EFY
CHECKED	OVK
DRAWN	T.D.
CHECKED	GEP

c:\pwworkspace\jayed\10220047-70606-014-E-BridgePlans.dgn

FOR INFORMATION ONLY